

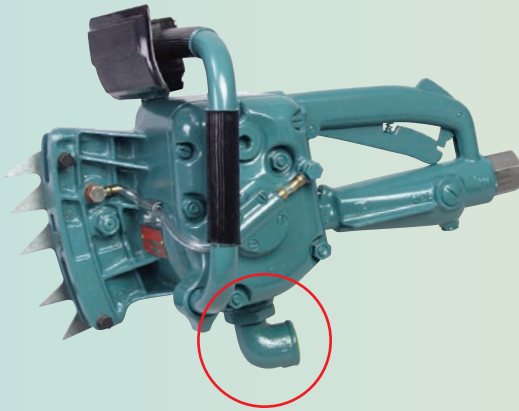


4 HP Pneumatic Chain Saw

Powerful, efficient cutting of wood and plastic

Used successfully for many years in polyethylene plants, petrochemical industries, utilities, underground mines and marine applications

**Model 5 1007 0040
25" cutting capacity**



*Underwater chain saw shown with exhaust valve
Model Series 5 1008*



Air Tool Line Conditioner for underwater air tools to displace moisture. Developed to inhibit rust and corrosion of air motors. 1 quart/liter, order part number MS 9105.

- Ideal for use in polyethylene plants, petrochemical industries, utilities, underground mines and marine applications
- Pneumatic power is safer than gas or electric in hazardous atmospheres and wet environments, including underwater applications
- Low maintenance and easy startup – saw chain and motor are automatically oiled by two separate lubricating systems
- Powerful 4 HP motor at 90 PSI air pressure and 92 CFM
- Chain guard to protect operator
- Available with 17", 21" and 25" cutting capacity
- .404 pitch Super Chisel saw chain is standard
- Carbide-tipped and Ripping saw chain are optional

Model No.	Power	Cutting Capacity	PSI	CFM	Length with Bar	Weight (lbs.)	Air Connection	Hose ID
General Use								
5 1007 0010	4 HP	17"	90	92	33"	18	3/4" NPT (ID)	5/8"
5 1007 0020	4 HP	21"	90	92	37"	19	3/4" NPT (ID)	5/8"
5 1007 0040	4 HP	25"	90	92	41"	20	3/4" NPT (ID)	5/8"
Underwater Use*								
5 1008 0030	4 HP	21"	90	92	37"	19	3/4" NPT (ID)	5/8"
5 1008 0040	4 HP	25"	90	92	41"	20	3/4" NPT (ID)	5/8"

* Pneumatic Chain Saw with 17" cutting capacity is also available for underwater applications.

Utility Pneumatic Chain Saw



Compact, lightweight and powerful

- Ideal all-purpose air chain saw
- Only 5.4 lbs.
- 10" capacity
- Ideal for use in utilities, mines, construction and agriculture

Model 5 1005 0010

Motor Power	1.2 HP
Cutting Capacity	10"
PSI	90
CFM	30
Length	21"
Weight	5.4 lbs.
Air Connection	1/4" NPT (ID)



Model 5 1005 0010
10" cutting capacity
Includes built-in chain oiler

Chain Saw Extension Rod – extends saw reach to 7'

Part No.
0165.0602

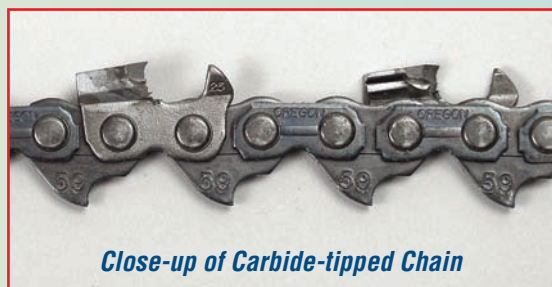
- For use with pneumatic chain saw, model no. 5 1005 0010 (above)

- Trigger on handle allows accurate control of speed



Carbide-tipped Saw Chain

- More cutting efficiency with less down time
- Stays sharp 25x longer and lasts 10x longer than regular-life saw chains
- Efficiently cuts tough materials, including plastics, railroad ties, utility poles, hardwoods and soft masonry materials
- Withstands severe cutting conditions that include sand, mud, salvage work, etc.
- Easily resharpened
- Available in 10", 15", 17", 21" and 25" lengths



Close-up of Carbide-tipped Chain

Also available: Super Chisel and Ripping saw chain in 10", 15", 17", 21" and 25" lengths

Guide Bars

- For wood and plastics
- Armor Tip available in 15", 17", 21" and 25" lengths
- Sprocket Tip available in 10" length only





Hydraulic Chain Saws

Versatile, lightweight saw for utility and maintenance



*Model ACH000
Pistol Grip Saw
(above/right)*

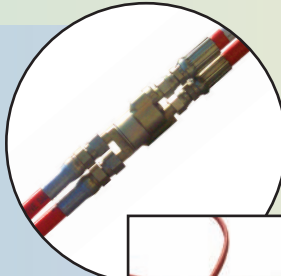
- Up to 6 HP, high-torque gear motor
- Open/closed hydraulic system
- Pistol grip with safety trigger lock and insulated handle
- Patented spool system eliminates heat generation, for safer operation
- Ideal for use in utilities, mines, construction and agriculture
- Pole saw models ACS-70 and ACS-80 feature non-conductive fiberglass pole for long reach (overall lengths: ACS-70 - 6.5'; ACS-80 - 7.5')
- Models ACS-70 and ACS-80 approved for live line work
- Optional hose swivel to eliminate tangled hoses (see below)



*Model ACS-70
Pole Saw with
optional 360°
Hydraulic
Hose Swivel
(above/right)*

**Optional 360° Hydraulic Hose Swivel
(Part No. 640080)**

- In-line, 2-hose hydraulic swivel
- Tools can be twisted 360° without tangling hoses
- Pressure balanced for optimal performance, even at full working pressure
- Fits 1/4" and 3/8" hydraulic hose



See our hydraulic lopper, page 35.

Model ACH000-12 - Pistol Grip Saw

Motor Power	Up to 6.5 HP
Handle	Pistol Grip
Motor Specifications	Oil Flow: 3-8 GPM @ 2000 PSI
Overall Length (w/bar)	23"
Bar Length	12" (14" and 16" optional)
Weight	5.8 lbs.
Hose Connection	3/8" JIC 37°

*For 14" bar, order no. ACH000-14; for 16" bar, order no. ACH000-16

Model ACS-70 - Pole Saw

Motor Power	Up to 6.5 HP
Handle	Pistol Grip
Motor Specifications	Oil Flow: 3-8 GPM @ 2000 PSI
Overall Length (w/bar)	77"
Bar Length	12" (14" and 16" optional)
Weight	8.8 lbs.
Hose Connection	3/8" JIC 37°

*For 7.5 ft. overall length, order no. ACS-80

PowerGrit Air Utility Saw

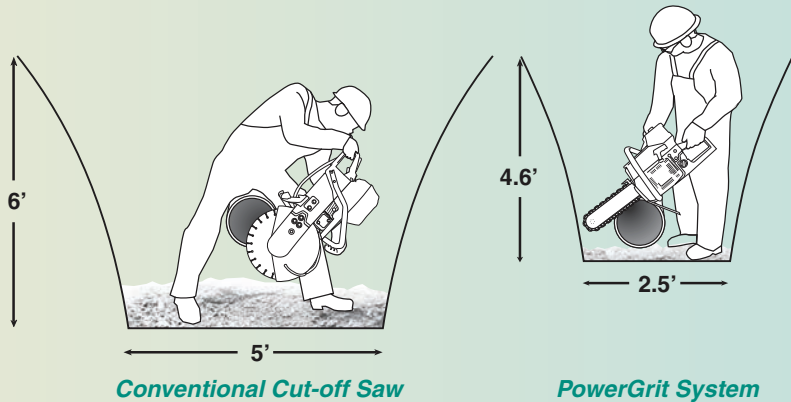


Cut ductile iron pipe underground with minimal excavation



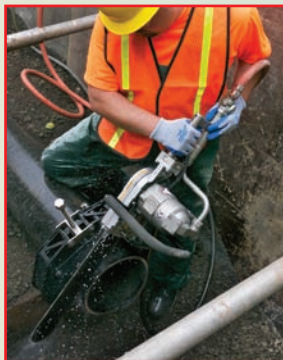
- Ideal for utility, commercial infrastructure, fire & rescue, construction and underwater applications
- Cut ductile iron (D. I.) pipe
- Patent-pending chain design with braided layer diamond coating
- 15" and 20" bar length available
- Single side access to pipe
- Reduced excavation, labor time and operator effort
- Improved control and operator safety
- Can cut concrete by changing bar, sprocket and chain – see page 30

The PowerGrit system allows the user to perform the entire cut from one position - a feature especially helpful in reducing the amount of excavation required in underground cuts.



Conventional Cut-off Saw

PowerGrit System



PowerGrit Accessories

Description	Order no.
15" PowerGrit Chain	PG 52-3810
20" PowerGrit Chain	PG 53-5080
PowerGrit Pipe Clamp (12" cap.; includes mounting axle)	PG 56-9960

PowerGrit Pipe Clamp – Order No. PG 56-9960

12" capacity. Developed for use in underground pipe applications for safety, accuracy and ease of use. Solid, stable cutting platform that improves operator safety and cut precision in all applications.



Model No.	Power	No Load Speed	Max. Depth of Cut	Motor Specifications	Weight w/ Bar and Chain	No Load Torque (in.-lbs.)	Noise Level at 3 ft.
Pneumatic PowerGrit Chain Saw							
CS 536163-PG2*	6.5 HP	5700 RPM	15"	124 CFM @ 90 PSI (6 bar)	32	104	88 dB
CS 536163-PG3**	6.5 HP	5700 RPM	20"	124 CFM @ 90 PSI (6 bar)	33	104	88 dB

*For 15" PowerGrit Saw and Pipe Clamp – order no. CS 536163-PG2C

**For 20" PowerGrit Saw and Pipe Clamp – order no. CS 536163-PG3C



Concrete Chain Saws

Pneumatic • Hydraulic

Cut through walls, floors and columns in a single pass

CONCRETE CHAIN SAWS



Model CS 536163-2
6.5 HP Air Motor

AirFORCE F4™
Diamond Chains
Optimized for pneumatic chainsawing

- Specifically designed for the demanding requirements of professional sawing and drilling contractors
- Now with AirFORCE F4™ Diamond chain – optimized for use with pneumatic saw
- Deep plunge cuts – up to 15" deep
- Square corners up to 14" with no overcuts
- Cut mechanical openings and irregular shapes
- Easily cut through reinforced concrete, brick, block, concrete pipe and natural stone
- Durable industrial finish on die-cast aluminum body stands up to harsh environments

Plunge cut up to 15" deep!



- Built-in Wallwalker provides leverage advantage to make cutting easier



CS Unitec Offers 2 Types of Concrete Chain Saws to Meet Your Cutting Requirements:

CS 536163 Pneumatic

- High torque output for tough cutting jobs
- Powerful 6.5 HP air motor
- No gas or engine fumes – ideal for confined spaces and indoor use
- Noise level: 88 dB at 3 feet (approx. 1 meter)
- Weight: 29 lbs. (without bar and chain)

CS 526822 Hydraulic

- Dependable, powerful 11 HP motor
- Hydraulic power for heavy-duty mining, utility, marine and construction applications
- Weight: 25 lbs. (without bar and chain)

Please see page 30 for Concrete Chain Saw Accessories, including:

- Diamond Chains
- Guide Bars
- SpeedHook®
- And More!

Concrete Chain Saws

Rugged construction for demanding applications



Above: Optional SpeedHook® guides saw for straight cutting (see page 30).



Model CS 526822
11 HP Hydraulic Motor

FORCE F4
Diamond Chains



CONCRETE CHAIN SAWS

Model No.	Power	No Load Speed	Max. Depth of Cut	Motor Specifications	Weight w/ Bar and Chain	No Load Torque (in.-lbs.)	Noise Level at 3 ft.
Pneumatic Concrete Chain Saw							
CS 536163-1	6.5 HP	5700 RPM	10"	124 CFM @ 90 PSI (6 bar)	32	104	88 dB
CS 536163-2	6.5 HP	5700 RPM	15"	124 CFM @ 90 PSI (6 bar)	33	104	88 dB
Hydraulic Concrete Chain Saw							
CS 526822-1	11 HP	5700 RPM	10"	8 GPM @ 2500 PSI (172 bar)	28	95	88 dB
CS 526822-2	11 HP	5700 RPM	15"	8 GPM @ 2500 PSI (172 bar)	29	95	88 dB

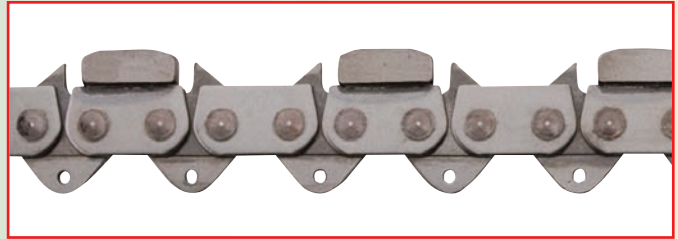


Concrete Chain Saw Accessories

Make your concrete chain saw work for you

AirFORCE F4™ Diamond Chains Two options for cutting

Match the Diamond Chain to the material or application:



1. AirFORCE Premium

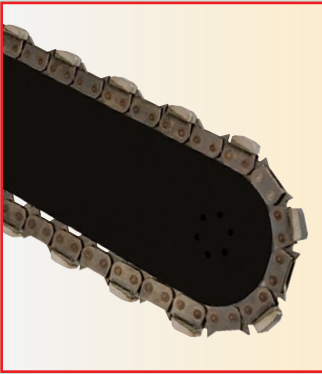
For cutting concrete with steel reinforcement
10" – Part No. CC 01-2540
15" – Part No. CC 01-3810

10" chain has 25 segments for 10" max. cutting depth, 9" square corners

2. AirFORCE Standard

General-purpose Diamond Chain
10" – Part No. CC 02-2540
15" – Part No. CC 02-3810

15" chain has 29 segments for 15" max. cutting depth, 14" square corners



Guide Bars with internal water feed

10" Guide Bar
Part No. GB 01-2540

- 10" cutting capacity
- 9" depth of square cut
- Accommodates a 25 segment Diamond Chain

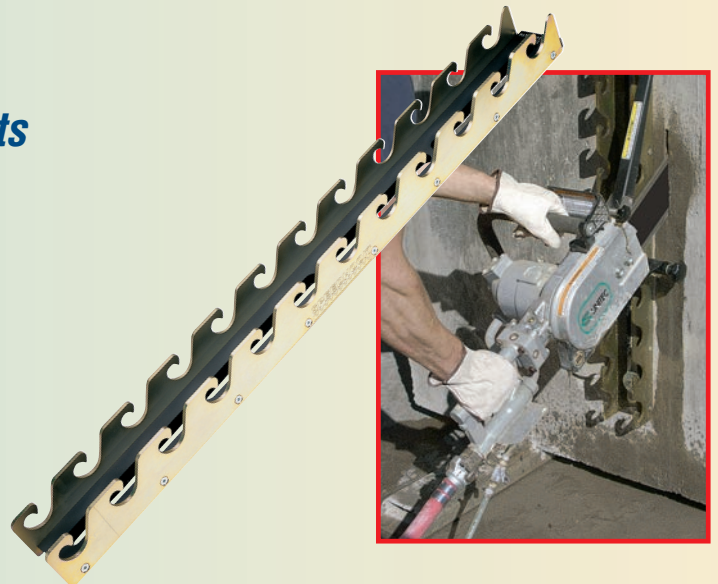
15" Guide Bar
Part No. GB 03-3810

- 15" cutting capacity
- 14" depth of square cut
- Accommodates a 29 segment Diamond Chain

SpeedHook® Guides the saw for straight cuts

SpeedHook® Complete Kit
Part No. CS 70552
(includes SpeedHook® 42" rail, 1 saw adapter and 1 axle)

- Quickly and easily attaches to wall with anchors
- Guides saw for straight cutting through reinforced concrete, brick, block and natural stone
- Note: Reduces cutting depth by 3"



Concrete Diamond Chain Life



Maximize Diamond Chain life with these hints

Estimated chain life for AirFORCE Premium – 29 segment chain (Part No. CC 01-3810) is approximately 600 in.-ft. in concrete with up to 5/8" rebar.

Lineal feet in common wall thickness*:

Wall Thickness	Lineal Cutting Feet
6 inches	100 feet
8 inches	75 feet
10 inches	60 feet

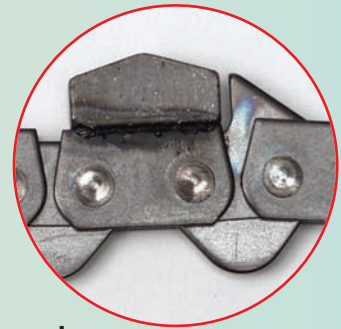
The cutting life of the chains is not guaranteed. There are many variables from job to job, including hardness of concrete, which make it impossible to accurately predict chain life. *These numbers are rough, starting point estimates only, not for bidding purposes. Please refer to Operator's Manual for proper safety precautions.

Factors negatively affecting chain life:

- Steel reinforcing... many pieces of large diameter rebar cause reduced life
- Aggregate hardness... harder aggregates cause reduced life
- Operator experience... first-time users generally get less chain life

Cutting tips to improve chain life:

- Use minimum of 20 PSI water pressure
- Always cut at full throttle – slowly plunge into wall and push hard enough to cause the RPMs to drop by 25% to 30%
- Always apply steady feed force
- Slowly rock the bar and chain into the cut using Wallwalker® as a pry point
- Reduce arm motions – hold saw close to body, using legs and body to apply feed force; always cut with saw between shoulders and knees, preferably at waist height
- If saw begins to drift off the intended cut line, pull out and restart cut



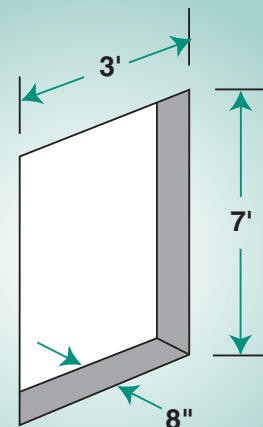
How to calculate inch-foot (in.-ft.)

An inch-foot (in.-ft.) is equal to the Depth of Cut in inches x Length of Cut in feet. This measurement is used to determine chain or blade life.

For example:

Calculate how many in.-ft. are in this doorway.

1. Determine the Depth of Cut in inches.
For this example, it is 8 inches.
2. Determine the Length of Cut in feet.
 $3 + 7 + 3 + 7 = 20$ feet.
3. Multiply the two numbers.
 $8 \text{ in.} \times 20 \text{ ft.} = 160 \text{ in.-ft.}$



Note for metric users: 1cm = .3937 inches and 1 meter = 3.2808 ft.

AirPac Extends life of pneumatic power tools see page 33 for more information



Model CSAP-2

- Removes moisture and dirt from air lines; a float valve automatically ejects water and dirt
- Includes automatic oiler; prevents tools from freezing in cold environments
- Eliminates air motor downtime caused by water and dirt
- Connections for two tools, max. air flow 185 CFM