

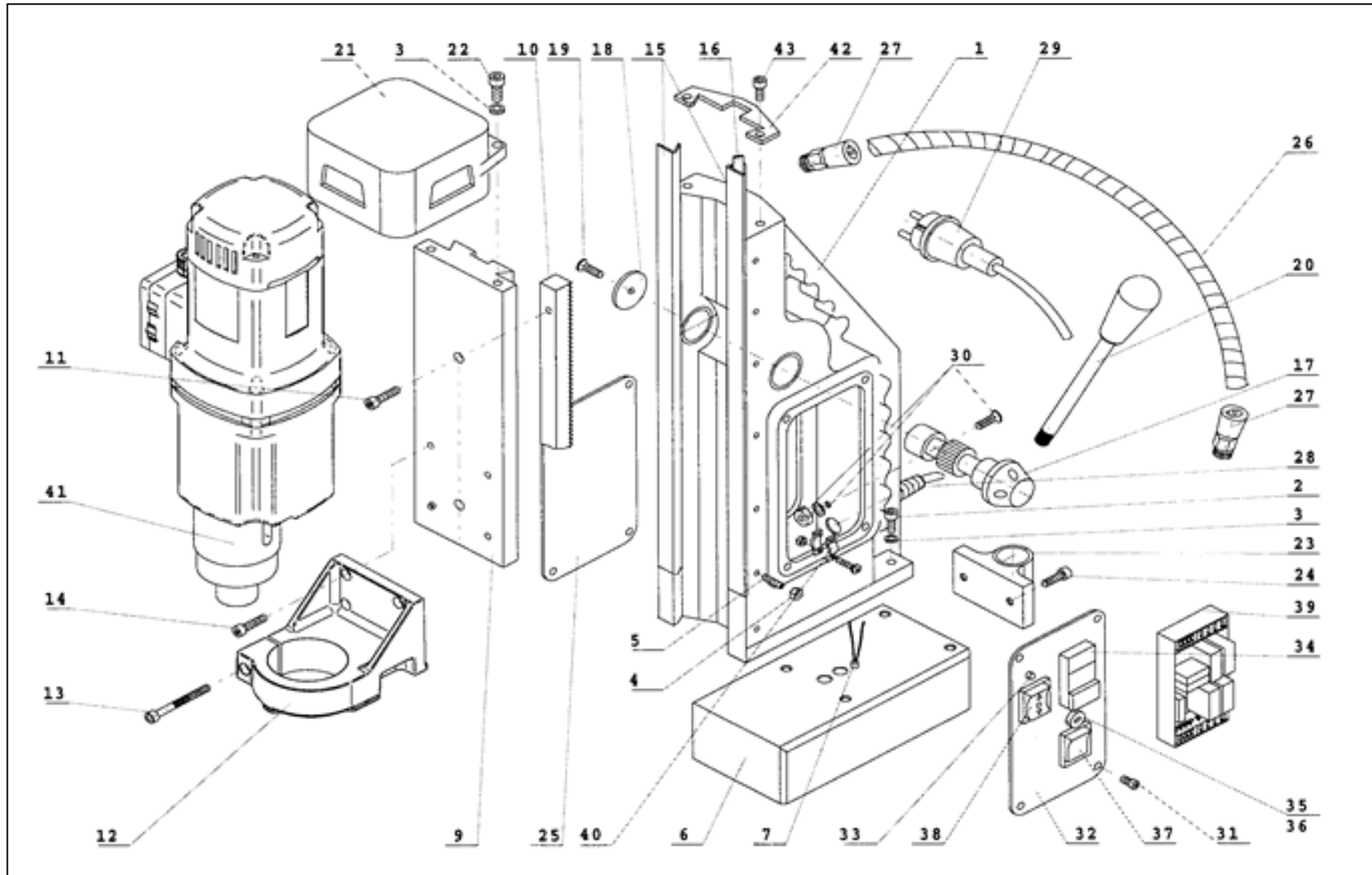
CS UNITEC, INC.

22 Harbor Avenue
Norwalk, CT 06850

Website: www.csunitec.com

Email: info@csunitec.com

Model ECO 100/3 AK Magnetic Drill



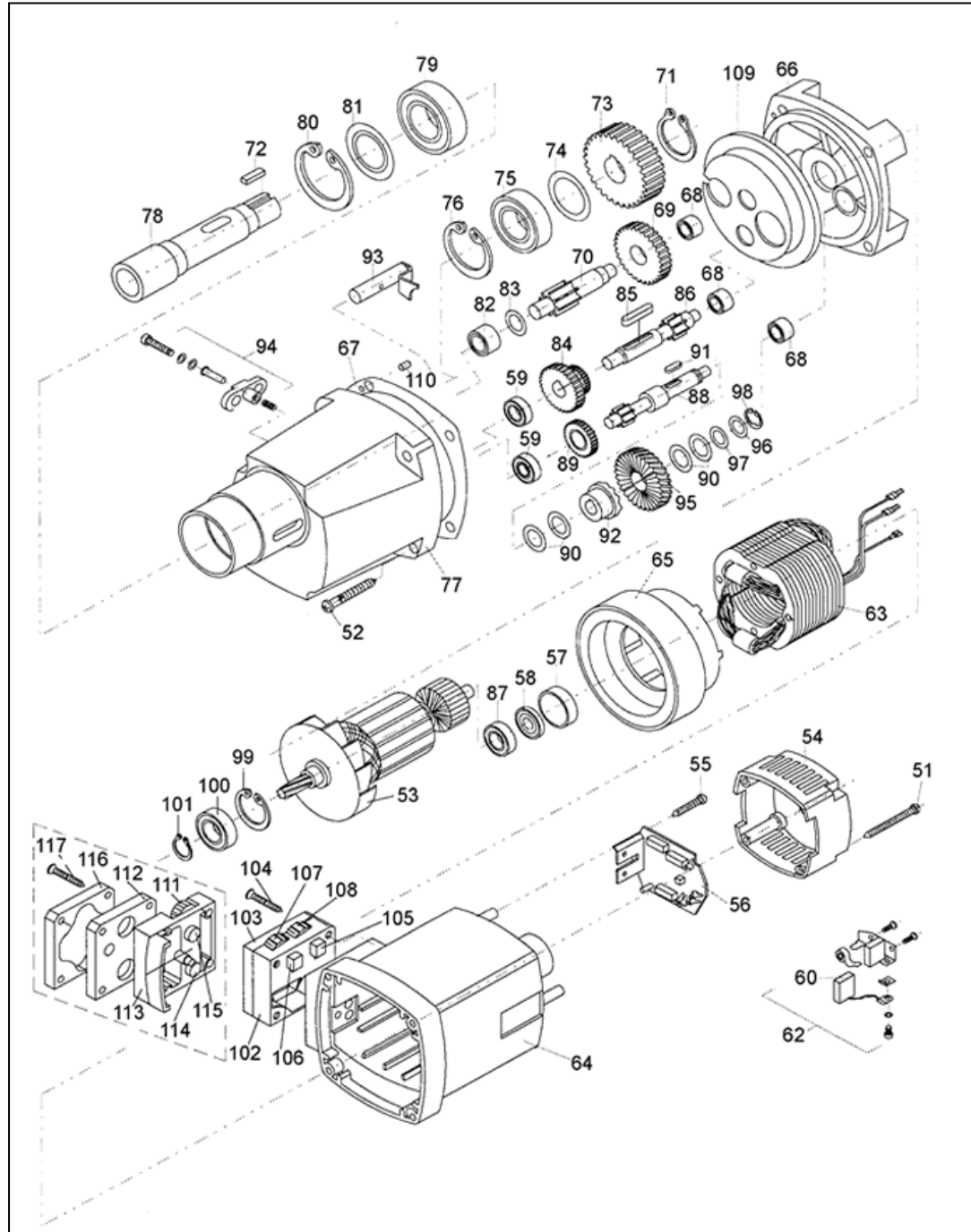
CS UNITEC, INC.

22 Harbor Avenue
Norwalk, CT 06850

Website: www.csunitec.com

Email: info@csunitec.com

Model ECO 100/3 AK Magnetic Drill



Not responsible for typographical errors.

<u>POS. NO.</u>	<u>ITEM NO.</u>	<u>DESCRIPTION</u>	
104 + 117	100.0617	Screw	
14 + 24	020.0106	Socket Screw	
15 + 16	100.0081	Brass Rails-Set of Left &Right	
1	100.0001	Frame	
2	100.0006	Nut Bolt	
3	100.0031	Washer	
4	020.0096	Nut	
5	100.0026	Setting Screw	
6	100.0038	Magnet for ECO 100/3	
7	020.0201	Sensor	
8	100.0037	Swivel Base Complete	
9	100.0041	Slide	
10	100.0076	Rack	
11	100.0066	Screw for Rack	
12	100.0046	Motor Holder - for 220 Volt	See #100.0047
13	100.0071	Fixing Screw	
17	100.0101	Capstan Hub Assembly	
18	020.0077	End Plate	
19	020.0081	Screw	
20	100.0116	Arm for Capstan	
21	100.0122	Mixing Fixing Plate	Replaces 100.0121
22	100.0126	Screw for Motor Fixing Plate	
23	020.0151	Magnet Spring Ball Complete	
25	100.0141	Rear Plate	
26	080.0136	Motor Cable Complete	
27	020.0041	Cable Gland	
28	020.0031	Cable Gland	
29	020.0036	Power Cord	
30	020.0182	Screw	
31	020.0101	Screw	
32	080.0146	Front Plate	
33	020.0206	Sensor LED and Cable	
34	020.0006	Switch, On/Off	
35	020.0016	Fuse Holder	
36	020.0017	Fuse	
37	020.0011	Magnet Switch	
38	100.0152	Switch	
39	100.0003	Control Unit	

CS Unitec, Inc.

22 Harbor Ave, Norwalk, CT 06850

Telephone: 203-853-9522 Toll Free: 800-700-5919 Fax: 203-853-9921

WebSite: www.csunitec.com E-Mail: info@csunitec.com

Not responsible for typographical errors.

<u>POS. NO.</u>	<u>ITEM NO.</u>	<u>DESCRIPTION</u>	
40	020.0037	Cable Clamp	
41	100.0304	Motor Complete with gearbox,	ECO 100/3
42	100.0091	Top Plate	
43	100.0096	Screw for Top Plate	
51	100.0306	Screw for End Cap	
52	100.0601	Notched pin	
53	7551A100	Rotor	Replaces 74329100
54	100.0322	End Cover	
55	100.0311	Screw for Speed Control Unit	
56	7142B280	Circuit Board, 110 Volt for	EHB 32/2 series motors
57	100.0346	Armature Speed Disc	
58	100.0348	Armature Speed Disk	
59	100.0506	Bearing	
60	80700021	Carbon Brushes-NEW # WILL BE	80700040
62	100.0372	Carbon Brush Assembly	
63	100.0384	Field	
64	100.0388	Housing	
65	100.0391	Ring, air guiding	
66	100.0401	Gearing, end shield	
67	100.0458	Gasket	
68	100.0411	Needle Bearing	8 x 15 x 10
69	100.0416	Gear	
70	100.0421	Intermediate Shaft	
71	100.0426	Circlip	
72	100.0431	Key	
73	100.0436	Gear, Drive shaft	
74	100.0441	Washer, Fitting	
75	100.0446	Bearing	
76	100.0451	Circlip	
77	100.0456	Gear Housing Complete	
78	100.0461	Drive Shaft	
79	100.0466	Bearing	
80	100.0471	Circlip	
81	100.0476	Washer	
82	100.0481	Needle Bearing	
83	100.0486	Washer for needle bearing	
84	100.0491	Gear - 2 Speed	
85	100.0496	Key	

CS Unitec, Inc.

22 Harbor Ave, Norwalk, CT 06850

Telephone: 203-853-9522 Toll Free: 800-700-5919 Fax: 203-853-9921

WebSite: www.csunitec.com E-Mail: info@csunitec.com

Not responsible for typographical errors.

<u>POS. NO.</u>	<u>ITEM NO.</u>	<u>DESCRIPTION</u>	
86	100.0501	Gear Shaft	
87	080.0351	Bearing	
88	100.0511	Intermediate Shaft 1	
89	100.0516	Gear	
90	100.0551	Shell	
91	100.0526	Key	
92	100.0531	Clutch	
93	100.0536	Clutch Shaft	
94	71540545	Gear Switch	Replaces 040.0286
95	100.0547	Gear, First	
96	80200503	Fitting Washer 12x0.5	
97	100.0406	Washer	
98	100.0561	Safety Washer	
99	100.0581	C-Clip	
100	80410031	Bearing	Replaces 032.0171
101	100.0571	C-Clip	
102	100.0568/2	T/S Housing red/blue	
103	100.0611/2	T/S Switch Cap	
105	100.0597/2	Speed Switch	
106	100.0592/2	Torque Switch	
107	100.0590/R	T/S Switch Wheel Red	
108	100.0590/B	T/S Switch Wheel Blue	
109	100.0621	Plate for Gear Casing	
110	100.0549	Casing Pin	
111	100.0590	T/S Switch Wheel	
112	100.0606	T/S Switch Spacer	
113	100.0569	COMPLETE HOUSING	
114	100.0597	Speed Switch	
115	100.0592	Torque Switch	
116	100.0611	T/S Switch Cap	

CS Unitec, Inc.

22 Harbor Ave, Norwalk, CT 06850

Telephone: 203-853-9522 Toll Free: 800-700-5919 Fax: 203-853-9921

WebSite: www.csunitec.com E-Mail: info@csunitec.com

Not responsible for typographical errors.

<u>POS. NO.</u>	<u>ITEM NO.</u>	<u>DESCRIPTION</u>	
104 + 117	100.0617	Screw	
14 + 24	020.0106	Socket Screw	
15 + 16	100.0081	Brass Rails-Set of Left &Right	
1	100.0001	Frame	
2	100.0006	Nut Bolt	
3	100.0031	Washer	
4	020.0096	Nut	
5	100.0026	Setting Screw	
6	100.0038	Magnet for ECO 100/3	
7	020.0201	Sensor	
8	100.0037	Swivel Base Complete	
9	100.0041	Slide	
10	100.0076	Rack	
11	100.0066	Screw for Rack	
12	100.0046	Motor Holder - for 220 Volt	See #100.0047
13	100.0071	Fixing Screw	
17	100.0101	Capstan Hub Assembly	
18	020.0077	End Plate	
19	020.0081	Screw	
20	100.0116	Arm for Capstan	
21	100.0122	Mixing Fixing Plate	Replaces 100.0121
22	100.0126	Screw for Motor Fixing Plate	
23	020.0151	Magnet Spring Ball Complete	
25	100.0141	Rear Plate	
26	080.0136	Motor Cable Complete	
27	020.0041	Cable Gland	
28	020.0031	Cable Gland	
29	020.0036	Power Cord	
30	020.0182	Screw	
31	020.0101	Screw	
32	080.0146	Front Plate	
33	020.0206	Sensor LED and Cable	
34	020.0006	Switch, On/Off	
35	020.0016	Fuse Holder	
36	020.0017	Fuse	
37	020.0011	Magnet Switch	
38	100.0152	Switch	
39	100.0003	Control Unit	

CS Unitec, Inc.

22 Harbor Ave, Norwalk, CT 06850

Telephone: 203-853-9522 Toll Free: 800-700-5919 Fax: 203-853-9921

WebSite: www.csunitec.com E-Mail: info@csunitec.com

Not responsible for typographical errors.

<u>POS. NO.</u>	<u>ITEM NO.</u>	<u>DESCRIPTION</u>	
40	020.0037	Cable Clamp	
41	100.0304	Motor Complete with gearbox,	ECO 100/3
42	100.0091	Top Plate	
43	100.0096	Screw for Top Plate	
51	100.0306	Screw for End Cap	
52	100.0601	Notched pin	
53	74329100	Armature - 110 Volt - REPLACES	7152E100 &100.0319
54	100.0322	End Cover	
55	100.0311	Screw for Speed Control Unit	
56	7142B280	Circuit Board, 110 Volt for	EHB 32/2 series motors
57	100.0346	Armature Speed Disc	
58	100.0348	Armature Speed Disk	
59	100.0506	Bearing	
60	80700021	Carbon Brushes-NEW # WILL BE	80700040
62	100.0372	Carbon Brush Assembly	
63	100.0384	Field	
64	100.0388	Housing	
65	100.0391	Ring, air guiding	
66	100.0401	Gearing, end shield	
67	100.0458	Gasket	
68	100.0411	Needle Bearing	8 x 15 x 10
69	100.0416	Gear	
70	100.0421	Intermediate Shaft	
71	100.0426	Circlip	
72	100.0431	Key	
73	100.0436	Gear, Drive shaft	
74	100.0441	Washer, Fitting	
75	100.0446	Bearing	
76	100.0451	Circlip	
77	100.0456	Gear Housing Complete	
78	100.0461	Drive Shaft	
79	100.0466	Bearing	
80	100.0471	Circlip	
81	100.0476	Washer	
82	100.0481	Needle Bearing	
83	100.0486	Washer for needle bearing	
84	100.0491	Gear - 2 Speed	
85	100.0496	Key	

CS Unitec, Inc.

22 Harbor Ave, Norwalk, CT 06850

Telephone: 203-853-9522 Toll Free: 800-700-5919 Fax: 203-853-9921

WebSite: www.csunitec.com E-Mail: info@csunitec.com

Not responsible for typographical errors.

<u>POS. NO.</u>	<u>ITEM NO.</u>	<u>DESCRIPTION</u>	
86	100.0501	Gear Shaft	
87	080.0351	Bearing	
88	100.0511	Intermediate Shaft 1	
89	100.0516	Gear	
90	100.0551	Shell	
91	100.0526	Key	
92	100.0531	Clutch	
93	100.0536	Clutch Shaft	
94	71540545	Gear Switch	Replaces 040.0286
95	100.0547	Gear, First	
96	80200503	Fitting Washer 12x0.5	
97	100.0406	Washer	
98	100.0561	Safety Washer	
99	100.0581	C-Clip	
100	80410031	Bearing	Replaces 032.0171
101	100.0571	C-Clip	
102	100.0568/2	T/S Housing red/blue	
103	100.0611/2	T/S Switch Cap	
105	100.0597/2	Speed Switch	
106	100.0592/2	Torque Switch	
107	100.0590/R	T/S Switch Wheel Red	
108	100.0590/B	T/S Switch Wheel Blue	
109	100.0621	Plate for Gear Casing	
110	100.0549	Casing Pin	
111	100.0590	T/S Switch Wheel	
112	100.0606	T/S Switch Spacer	
113	100.0569	COMPLETE HOUSING	
114	100.0597	Speed Switch	
115	100.0592	Torque Switch	
116	100.0611	T/S Switch Cap	

CS Unitec, Inc.

22 Harbor Ave, Norwalk, CT 06850

Telephone: 203-853-9522 Toll Free: 800-700-5919 Fax: 203-853-9921

WebSite: www.csunitec.com E-Mail: info@csunitec.com