

PTX Grinding Wheels for Coarse and Fine Finishing

PTX abrasives from CS Unitec are made according to high quality standards. A unique production process guarantees high concentricity and thus vibration-free grinding – a prerequisite for fatigue-free working and perfect surface finishes with no transitions or shadows. **Simply try it!** You will be surprised how much smoother a PTX grinding wheel or brush wheel is.



PTX FLEECE (Nonwoven) Wheel
Flexible nylon fleece impregnated with abrasives for a first-class finish. Produces shadow-free matte, satin and polished finishes. For removing oxidation on stainless steel and nonferrous metals and also suitable for smoothing wooden surfaces. Very high fleece content by fleece compression.
Diameter: 4"
Width: 2", 4-1/8" or 6"
Grit: 60, 80, 180, 280, 400, 600



PTX Interleaf (Combi) Wheel
Nylon fleece combined with abrasive flaps for matte finishing, burnishing and removing light scratches, oxidation and handling marks on stainless steel and all metals. For removing old paint on wood while smoothing at the same time.
Diameter: 4"
Width: 2", 4-1/8" or 6"
Grit: 60, 80, 180



PTX Flap Wheel
With radial abrasive cloth flaps in various grit sizes for removing rust, oxidation layers, minor scratches and for the regraining and burnishing of metals.
Diameter: 4"
Width: 2" or 4-1/8"
Grit: 24, 40, 50, 60, 80, 120, 180, 240



PTX CLEAN Wheel
Made of hard-textured, nonwoven fleece for cleaning and descaling welds, pore-deep removal of rust, oxidation and coatings, cleaning beams, bricks, etc. Produces an effective linear finish on stainless steel. A new production process guarantees 100% concentricity.
Diameter: 4"
Width: 2" or 4"
Grit: Medium



PTX GUM Wheel
Soft rubber impregnated with abrasive grit for the removal of minor scratches. Ideal for a bright, decorative linear finish on stainless steel and nonferrous metals and for smoothing wooden fibers.
Diameter: 4"
Width: 2" or 4"
Grit: 60, 180

PTX FLEECE (Nonwoven) Wheels

Part No.	Grit	Size
47411	60 grit	4" dia. x 4-1/8" wide
47412	80 grit	4" dia. x 4-1/8" wide
47413	180 grit	4" dia. x 4-1/8" wide
47414	280 grit	4" dia. x 4-1/8" wide
47415	400 grit	4" dia. x 4-1/8" wide
43601*	600 grit	4" dia. x 4-1/8" wide
47401	60 grit	4" dia. x 2" wide
47402	80 grit	4" dia. x 2" wide
47403	180 grit	4" dia. x 2" wide
47404	280 grit	4" dia. x 2" wide
47405	400 grit	4" dia. x 2" wide
47422	80 grit	4" dia. x 6" extra wide
47423	180 grit	4" dia. x 6" extra wide

* Keyed Shaft

PTX Interleaf (Combi) Wheels

Part No.	Grit	Size
47311	60 grit	4" dia. x 4-1/8" wide
47312	80 grit	4" dia. x 4-1/8" wide
47313	180 grit	4" dia. x 4-1/8" wide
47301	60 grit	4" dia. x 2" wide
47302	80 grit	4" dia. x 2" wide
47303	180 grit	4" dia. x 2" wide
47322	80 grit	4" dia. x 6" extra wide
47323	180 grit	4" dia. x 6" extra wide

PTX Flap Wheels

Part No.	Grit	Size
47211	40 grit	4" dia. x 4-1/8" wide
47212	60 grit	4" dia. x 4-1/8" wide
47213	80 grit	4" dia. x 4-1/8" wide
47214	120 grit	4" dia. x 4-1/8" wide
47215	180 grit	4" dia. x 4-1/8" wide
47201	24 grit	4" dia. x 2" wide
47202	40 grit	4" dia. x 2" wide
47203	50 grit	4" dia. x 2" wide
47204	60 grit	4" dia. x 2" wide
47205	80 grit	4" dia. x 2" wide
47206	120 grit	4" dia. x 2" wide
47207	180 grit	4" dia. x 2" wide
47208*	240 grit	4" dia. x 2" wide

* Keyed Shaft

PTX CLEAN Wheels

Part No.	Grit	Size
47511	Medium (black)	4" dia. x 4" wide
40018A*	Medium (black)	4" dia. x 2" wide

PTX GUM Wheels

Part No.	Grit	Size
250 525-4*	60 grit	4" dia. x 4" wide
45181*	180 grit	4" dia. x 4" wide
45180*	180 grit	4" dia. x 2" wide

* Keyed Shaft

HOLLOW-CORE ABRASIVES HAVE MANY ADVANTAGES:

- Easy to mount – simply slide on and off
- 100% concentricity – no vibration
- Lower cost and higher productivity!

We continue to carry abrasives with core inserts.
Contact us for more information.



Expansion Roller

Use with sanding belts, fleece and felt sleeves. The sleeves are simply pushed over the expansion roller and held securely in place by the centrifugal force. **3-1/2" dia. x 4" wide** – **Part Number: 47005**

TIPS & TRICKS

Expansion Roller – Hard Rubber

Internal expansion slots now allow easier sleeve replacement and improved adjustment to the workpiece, as well as vibration absorption and concentricity.

Part Number: 47005



Belt Sleeves for Expansion Roller



PTX Zirconium Grinding Belt Sleeve

Made of zirconium. Removes deep scratches and grinds weld seams on metals. Far less rework is required as a result of using the time-saving linear grinding technique.

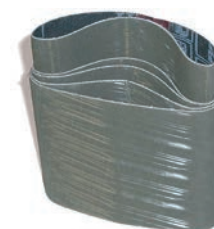
3-1/2" dia. x 4" wide
Grit: 40, 60, 80, 120, 150, 180



PTX Ceramic Grinding Belt Sleeve

High-performance ceramic aluminum oxide grain. Increased removal rate and longest life for highest productivity. Excels in all metals.

3-1/2" dia. x 4" wide
Grit: 40, 60, 80



PTX TZ Pyramid Sleeve

New abrasive cloth with pyramid-shaped grit structure. Allows high material removal while producing a very fine finish, reducing the amount of work required when compared to grinding belt sleeves and fleece sleeves. Pyramid sleeves are ideal for pre-polishing for fine mirror finishes and for removing scratches and spot welds. Even roller scale can be removed easily.

3-1/2" dia. x 4" wide
Grit: A65/320, A45/400, A30/600, A16/1200, A06/2000



PTX Fleece "Nonwoven" Sleeve

Nylon impregnated with abrasive grit for removing minor to medium scratch marks and oxidation coatings, matte and satin finishing and deburring applications.

3-1/2" dia. x 4" wide
Grit: Coarse, Medium, Fine, Superfine



The expansion roller is helpful when grinding large areas and removing large welds.

PTX Zirconium Grinding Belt Sleeves

Part No.	Grit	Size (dia. x width)	Quantity
42040	40 grit	3-1/2" x 4"	10 per pack
42060	60 grit	3-1/2" x 4"	10 per pack
42080	80 grit	3-1/2" x 4"	10 per pack
42120	120 grit	3-1/2" x 4"	10 per pack
42150	150 grit	3-1/2" x 4"	10 per pack
42180	180 grit	3-1/2" x 4"	10 per pack

PTX Ceramic Grinding Belt Sleeves

Part No.	Grit	Size (dia. x width)	Quantity
42440	40 grit	3-1/2" x 4"	10 per pack
42460	60 grit	3-1/2" x 4"	10 per pack
42480	80 grit	3-1/2" x 4"	10 per pack

PTX TZ Pyramid Sleeves

Part No.	Grit	Size (dia. x width)	Quantity
42265	A65/320 grit	3-1/2" x 4"	10 per pack
42245	A45/400 grit	3-1/2" x 4"	10 per pack
42230	A30/600 grit	3-1/2" x 4"	10 per pack
42216	A16/1200 grit	3-1/2" x 4"	10 per pack
42206	A06/2000 grit	3-1/2" x 4"	10 per pack

TZ PYRAMID GRIT COMPARISON TABLE

Corresponds to grit size	A65	A45	A30	A16	A06
	320	400	600	1200	2000

PTX Fleece "Nonwoven" Sleeves

Part No.	Grit	Size (dia. x width)	Quantity
42010	coarse (brown)	3-1/2" x 4"	5 per pack
42011	medium (red)	3-1/2" x 4"	5 per pack
42012	fine (blue)	3-1/2" x 4"	5 per pack
42009	superfine (grey)	3-1/2" x 4"	5 per pack

FLEECE COMPARISON TABLE

Corresponds to grit size	Coarse (brown)	Medium (red)	Fine (blue)	Superfine (grey)
	80	180	280	400

TIPS & TRICKS



To remove the grinding sleeve, place the expansion roller on a round object that is slightly smaller than the roller. Then push the sleeve down slightly using both hands.

Special Brushes for Metals, Wood and Hard Plastics



PTX Stranded Wire Wheels
Sturdy steel wire brush. For deburring, rust removal, roughing and cleaning metal. For brushing out soft annual rings on timber, leaving a rough rustic effect.
4" dia. x 2-7/8" wide – **Part No. 46301***
4" dia. x 1" wide – **Part No. 47702***
* Requires spacer rings 40007



PTX Bristle Wheel
Elastic nylon brush impregnated with abrasive grit. For roughing and deburring metal, as well as creating a rustic effect with even annual ring transitions on timber.
4" dia. x 2-7/8" wide – **Part No. 46101***
4" dia. x 1" wide – **Part No. 46102N***
* Requires spacer rings 40007



PTX Stainless Steel Wire Wheels
Elastic stainless steel wire brush. For cleaning welds, deburring, removing rust, roughing and removing coatings.
4" dia. x 2-7/8" wide – **Part No. 251 625***
4" dia. x 1" wide – **Part No. 46202N***
* Requires spacer rings 40007



PTX Fiber Wheel
Elastic fiber brush. For polishing stained wood, satin finishing, pore-deep dust removal and cleaning applications.
4" dia. x 4" wide – **Part No. 46400**

Note: Above wheels are configured for keyed shaft. Hollow-core shaft adapter not necessary.



Stranded wire wheel for creating a rustic effect on wood



Cotton Buffing Wheel
Cotton yarn wheel for use with compounds. Produces a very bright high mirror finish. Use on flat, contoured or irregular surfaces.
4" dia. x 2" wide
Part No. CS2405*
4" dia. x 4" wide
Part No. CS2410
4" dia. x 6" wide
Part No. CS2420
* Requires spacer rings 40007

Abrasives for Polishing to High-gloss and Mirror Finish



PTX Felt Sleeve
Made of soft merino (endless) for polishing large stainless steel and nonferrous surfaces quickly to a mirror finish. Also suitable for hard plastics. Must be used with the expansion roller.
3-1/2" dia. x 4" wide
Part No. 42013

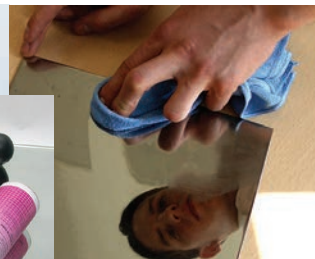


PTX SuperPolish Sleeve
Revolutionary special fleece produces perfect brilliant, shadow-free mirror finishes on stainless steel and nonferrous metal surfaces using polishing compounds (white and blue) and pink polishing cream. SuperPolish fleece is absorbent, does not smear and saves significant work time. Must be used with the expansion roller.
3-1/2" dia. x 4" wide
Part No. 42013N



Poly-PTX Cotton Rings
Fleece rings for polishing narrow or uneven stainless steel and nonferrous metal surfaces using polishing compounds (white and blue) and pink polishing cream. A separate Poly-PTX Cotton Ring must be used for each compound or cream so as not to mix different compound grits.
For polishing narrow or uneven stainless steel surfaces:
100mm x 12mm (4" dia. x 1/2" wide), 8 per pack **Part No. 40019M**
For polishing aluminum, brass and other nonferrous metals:
100mm x 12mm (4" dia. x 1/2" wide) **Part No. 250 521**

See page 10 for pre-grinding and polishing compounds, mirror finish creams, cleaners and protective sprays for finished metal surfaces.



Polishing and Maintenance Products (cont'd)



PTX Pre-grinding & Polishing Compound
Essential for polishing all metals, including stainless steel, aluminum, etc.
PTX® WHITE pre-polishing compound (23 oz.) – **Part No. 40013**
PTX® BLUE finishing compound (23 oz.) – **Part No. 40014**
PTX® WHITE and BLUE mini pastes (approx 4.2 oz. ea.) – **Part No. 40009**



PTX Polishing Cream, Pink
For high reflective finishing. Produces a perfect mirror finish on stainless steel and nonferrous metals when used with the SuperPolish Sleeve.
Miniature tube, 2 oz. – Part No. 40015T
Can, 2.2 lbs. – Part No. 40015



PTX Lime (noncaustic)
For removing cream and compound residues. Scatter on the surface, and wipe off with a microfiber cloth.
Aluminum scatter container with Lime (approx 5.3 oz.) – **Part No. 40020A**
Can, 2.2 lbs. – Part No. 40016
Scatter container only – Part No. 40020



Microfiber Cloths
For pore-deep cleaning and even distribution of maintenance products and polishes. Our microfiber cloths produce a top finish on all materials.
Size: 13" x 14" – Part No. 40031



INOX-Protect (hard sealant)
Protects finished and polished metal surfaces (stainless steel, steel, aluminum, brass, copper, etc.) with a clear, dry adhesive film. Removes fingerprints and other dirt.
Canister (w/ spray bottle), 1.3 gal. – Part No. 40041
Spray bottle, 17 oz. – Part No. 40040



Brilliance-Clean
For streak- and residue-free cleaning of all surfaces, including stainless steel, steel, aluminum, brass and copper. Brilliance-Clean is not harmful to plastics, wood or coated surfaces. It removes fingerprints, dust, compound residue, minor oil and grease marks and adhesive residue effortlessly. Evaporates quickly without leaving any residue on the surface.



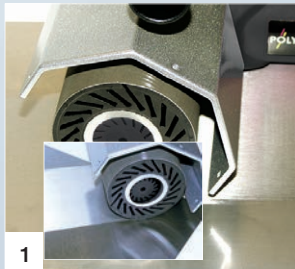
POLY Protection (oil film)
For cleaning and preserving finished and polished stainless steel and nonferrous metal surfaces. Protects against shadows and finger and water marks for a long time. Spray on and rub off with a micro-fiber cloth. Produces a darker effect on finished surfaces.
Canister (w/ spray bottle), 1.3 gal. – Part No. 40012
Spray bottle, 17 oz. – Part No. 40011

Canister (w/ spray bottle), 1.3 gal. – Part No. 40051
Spray bottle, 17 oz. – Part No. 40050

TIPS & TRICKS

A perfect mirror finish on stainless steel

The newly developed grinding and polishing system, featuring special **TZ Pyramid** and **SuperPolish** fabrics from CS Unitec, produces a perfect mirror finish quickly and in just a few steps.



Step 1 - Pre-grinding
Prepare with **TZ Pyramid sleeve** grit A45 (possibly A65) to remove mill skin, scratches and minor unevenness.



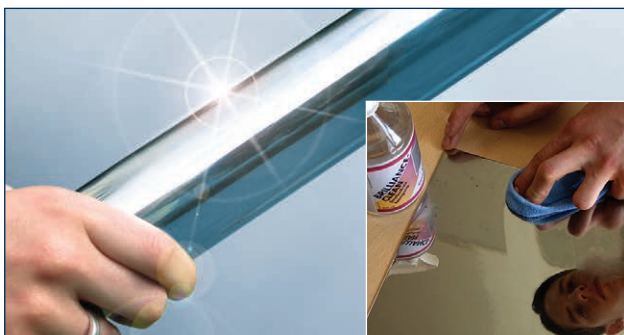
Step 2 - Intermediate grinding
Rework with **TZ Pyramid A30** and complete with **TZ Pyramid A16**. Use very little grinding pressure and grind perpendicular and diagonally.



Step 3 - Mirror finish polish
Use the **SuperPolish sleeve** with **white polishing paste**, then with **blue polishing paste**. Use a different sleeve for each paste grit. Polish diagonally. For a high-gloss finish, use the **SuperPolish sleeve** with the **pink high-gloss polishing cream**. Polish in one direction only.

Tip: After each step, remove the compound residue from the workpiece with **POLY Lime** and a **microfiber cloth**.

The result... a brilliant mirror finish!



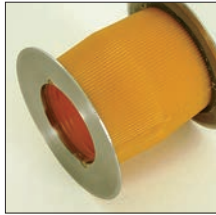
Maintain and protect finished or polished stainless steel surfaces.

Compound and cream residues can be removed using **PTX Lime**. Simply scatter on the lime and wipe it off using a microfiber cloth.

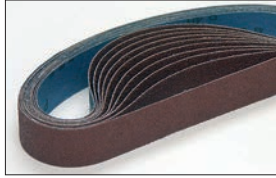
Compound residues, fingerprints, dust, minor oil and grease marks and adhesive residue can be removed effortlessly with **Brilliance-Clean**. Any residue will evaporate immediately.

To protect finished or polished metal surfaces, spray **INOX-Protect** on the surface, rub off with a microfiber cloth, wipe the surface dry and then polish briefly. The surface will be protected by a dry, invisible film for several weeks. Polished finishes will not be darkened by this product.

Abrasives for Pipe Constructions – Open or Closed



PTX Grinding Belt Roller with stainless steel flanges
For grinding, fleece, SuperPolish and felt belts. The belt roller is made of wear-resistant soft Vulculan with stainless steel discs on the sides. The surface is grooved to ensure that the abrasive belt does not slip.
Diameter: 3.5" x 2.8" Part No. 47006



PTX Grinding Belt in high-quality aluminum oxide (closed)
For coarse and initial grinding, rust removal and smoothing round metal pipes. For use with grinding belt rollers. For use on closed pipe constructions, see TIPS & TRICKS below. **Dimensions: 1.2" x 24"**
Grit: 40, 60, 80, 120, 150, 180, 240
See ordering information at right.

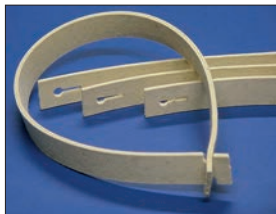


PTX TZ Pyramid Belt (closed)
New abrasive fabric with pyramid-shaped grit structure for removing scratches, roller scale and spot welds. TZ Pyramid belts allow high material removal while producing a very fine finish. They are ideal for the initial grinding before polishing to a mirror finish. Because the grit fineness is increased slowly, it is possible to omit several operations. For use with grinding belt rollers. For use on closed pipe constructions, see TIPS & TRICKS below.
Dimensions: 1.2" x 24", Grit: A65, A45, A30, A16, A06
See ordering information at right.



PTX Fleece Nonwoven Belt (open)
Buttonhole fastening system for fine grinding and pre-polishing on open and closed pipe constructions and handrails. The fleece belt can be opened and closed as often as necessary. For use with grinding belt rollers. International patent and design protected.
Dimensions: 1.2" x 26", Grit: coarse, medium, fine, superfine. See ordering information at right.

With buttonhole – **PATENTED!**



PTX Felt Belt (open)
Made of merino felt with buttonhole fastening system for polishing work on open and closed pipe constructions and handrails. The polishing belt can be opened and closed as often as necessary. For use with grinding belt rollers and our polishing compounds and creams. Use a separate felt belt for each compound and cream grit. Do not use compounds with different grits on felt. International patent and design protected.
Dimensions: 1.2" x 26" Part No. 49004



PTX SuperPolish Belt (closed)
For a perfect mirror finish on pipe constructions and handrails. SuperPolish is a new, special micro fleece that produces a perfect, brilliant mirror finish on stainless steel and nonferrous metals. Smears and shadows are eliminated when used with our polishing compounds (white and blue) and pink cream. SuperPolish is absorbent and saves lots of work time. For use with grinding belt rollers.
Dimensions: 1.2" x 26" (not available with buttonhole fastening system) Part No. 49004N

PTX Grinding Belts (Aluminum Oxide)

Part No.	Grit	Size (width x length)	Quantity
49040	40 grit	1.2" x 24"	10 per pack
49060	60 grit	1.2" x 24"	10 per pack
49080	80 grit	1.2" x 24"	10 per pack
49120	120 grit	1.2" x 24"	10 per pack
49150	150 grit	1.2" x 24"	10 per pack
49180	180 grit	1.2" x 24"	10 per pack
49240	240 grit	1.2" x 24"	10 per pack

PTX TZ Pyramid Belts

Part No.	Grit	Size (width x length)	Quantity
49365	A65/320 grit	1.2" x 24"	10 per pack
49345	A45/400 grit	1.2" x 24"	10 per pack
49330	A30/600 grit	1.2" x 24"	10 per pack
49316	A16/1200 grit	1.2" x 24"	10 per pack
49306	A06/2000 grit	1.2" x 24"	10 per pack

PTX Fleece Nonwoven Belts (open)*

Part No.	Grit	Size (width x length)
49001	coarse (brown)	1.2" x 26"
49002	medium (red)	1.2" x 26"
49003	fine (blue)	1.2" x 26"
49007	superfine (grey)	1.2" x 26"

* Feature buttonhole fastening system



PTX Special Adhesive Tape
With glass fabric insert for joining grinding belts. Strong, heat-resistant adhesive force. For joining PTX grinding and TZ Pyramid belts for use on closed pipe constructions.

Affix the adhesive tape over the entire length of the grinding belt, overlapping approximately 370°.
Dimensions: 1" x 165' Part No. 49000



INOX Miter Tape
Protect adjacent finishes when grinding. Self-adhering 304 Stainless tape for use when creating distinct edges on finishes. Excellent for creating mitered corners. Quick application and

residue-free removal. Minimal thickness for accurate grinding lines. Easily cut with scissors.
Dimensions: One roll measures 6" x 8.2 ft. Part No. 40070

TIPS & TRICKS

Grinding and polishing closed pipe constructions

Fleece and felt belts with the patented buttonhole fastening system are ideal for working on closed pipe constructions and handrails. The grinding belt can be placed over the pipe and closed or opened again in a twist using the buttonhole system. Changing a belt is quick and easy. The belt can be opened and closed as often as required.

Closed belts such as the high-quality aluminum oxide belt or the TZ Pyramid belt must be cut open to work on closed pipe constructions. Place the belt over the pipe and join using our special adhesive tape (P/N 49000) over the entire length (approx. 370°).

