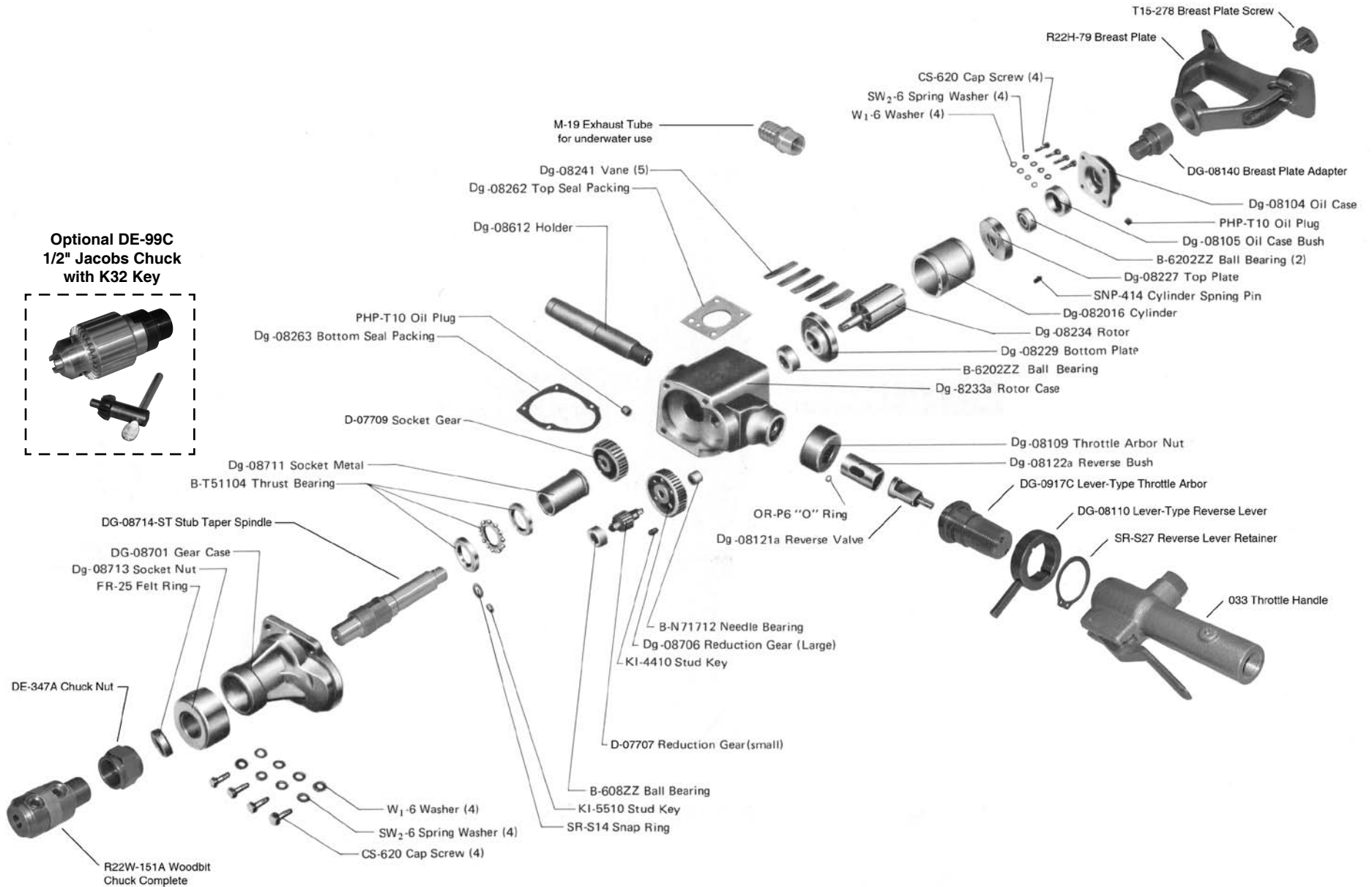




UNITEC

# 2-1903-0010 1" Reversible Woodboring Drill

Optional DE-99C  
1/2" Jacobs Chuck  
with K32 Key



*Not responsible for typographical errors.*

<b>ITEM NO.</b>	<b>DESCRIPTION</b>
033	Throttle Handle
B-608ZZ	Ball Bearing
B-620ZZ	Ball Bearing (3)
B-N71712	Needle Bearing
B-T51104	Thrust Bearing
CS-620	Cap Screw (4)
D-07707	Reduction Gear (small)
D-07709	Socket Gear (NRD-19R)
DE-347A	Chuck Nut
DG-08104	Oil Case
DG-08105	Oil Case Bushing
DG-08109	Throttle Arbor Nut
DG-08110	Lever Type - Reverse Lever
DG-08121A	Reverse Valve
DG-08122A	Reverse Bushing
DG-08140	Breast Plate Adapter
DG-082016	Cylinder
DG-08227	Top Plate
DG-08229	Bottom Plate
DG-08234	Rotor
DG-08241	Vane (5 Required)
DG-08262	Top Seal Packing
DG-08263	Bottom Seal Packing
DG-08612	Holder
DG-08701	Gear Case
DG-08706	Reduction Gear (large)
DG-08711	Socket Metal
DG-08713	Socket Nut
DG-08714-ST	Stub Taper Spindle
DG-0917C	Lever Type Throttle Arbor
DG-8233A	Rotor Case
FR-25	Felt Ring
K1-4410	Stud Key
K1-5510	Stud Key
M-19	Exhaust Tube
OR-P6	O-Ring
PHP-T10	Oil Plug
R22H-79	Breast Plate
R22W-151A	Woodbit Chuck Complete
SNP-414	Cylinder Spring Pin
SR-S14	Snap Ring
SR-S27	Reverse Lever Retainer
SW2-6	Spring Washer (8)

CS Unitec, Inc.

22 Harbor Ave, Norwalk, CT 06850

Telephone: 203-853-9522 Toll Free: 800-700-5919 Fax: 203-853-9921

WebSite: [www.csunitec.com](http://www.csunitec.com) E-Mail: [info@csunitec.com](mailto:info@csunitec.com)

*Not responsible for typographical errors.*

<b>ITEM NO.</b>	<b>DESCRIPTION</b>
T15-278	Breast Plate Screw
W1-6	Washer (8)

CS Unitec, Inc.

22 Harbor Ave, Norwalk, CT 06850

Telephone: 203-853-9522 Toll Free: 800-700-5919 Fax: 203-853-9921

WebSite: [www.csunitec.com](http://www.csunitec.com) E-Mail: [info@csunitec.com](mailto:info@csunitec.com)