

# Pneumatic Surface Finisher

Save time sanding and polishing. 4" wide face is ideal for finishing stainless steel, metals, wood and synthetics.

The powerful LP 1503 AIR grinding and polishing machine produces a uniform finish fast and easy without leaving visible transitions and shadows. It is compact, lightweight and heavy duty. Ideal for graining, polishing, brushing, blending, deburring, cleaning welds, roughing and more. Easily achieve a #3, #4 or #8 finish. A wide speed range, high torque and a comprehensive line of accessories make this an essential tool for continuous-duty surface finishing.



1 HP air motor at 90 PSI

### Pneumatic LP 1503 AIR Specifications

<b>Load speed</b>	2500 RPM
<b>Motor</b>	1 HP (1/2" Air Connection)
<b>Air consumption</b>	20 CFM @ 90 PSI
<b>Weight</b>	8 lbs.

### Standard Equipment\*

4" Interleaf wheel - P/N 47312*
Finned shaft - P/N 42004*

\* Standard equipment for both PTX Eco Smart and LP 1503 AIR surface finishers.

## Accessories

### Hollow-core Shaft Adapter

Allows user to utilize more economical hollow-core abrasives on traditional surface finishers. Fits 3/4" dia. x 4" long shaft and 1/4" keyway(s).

Part Number: 42004



### PTX Professional Case (empty)

Strong, impact-resistant design with rigid foam internal compartments.

Lockable Case  
Part Number: 80002



## Special Brushes for Metals, Wood and Hard Plastics



### PTX Stranded Wire Wheels

Sturdy steel wire brush. For deburring, rust removal, roughing and cleaning metal. For brushing out soft annual rings on timber, leaving a rough rustic effect.

4" dia. x 2-7/8" wide - Part Number: 47701  
4" dia. x 1" wide - Part Number: 47702



### PTX Bristle Wheel

Elastic nylon brush impregnated with abrasive grit. For roughing and deburring metal, as well as creating a rustic effect with even annual ring transitions on timber.

4" dia. x 2-7/8" wide - Part Number: 47711  
4" dia. x 1" wide - Part Number: 47712



### PTX Stainless Steel Wire Wheels

Elastic stainless steel wire brush. For cleaning welds, deburring, removing rust, roughing and removing coatings.

4" dia. x 2-7/8" wide - Part Number: 47721  
4" dia. x 1" wide - Part Number: 47722

### Stranded wire wheel for creating a rustic effect on wood



### PTX Fiber Wheel

Elastic fiber brush. For polishing stained wood, satin finishing, pore-deep dust removal and cleaning applications.

4" dia. x 4" wide - Part Number: 47731

# PTX Grinding Wheels for Coarse and Fine Finishing

PTX abrasives from CS Unitec are made according to high quality standards. A unique production process guarantees high concentricity and thus vibration-free grinding – a prerequisite for fatigue-free working and perfect surface finishes with no transitions or shadows. **Simply try it!** You will be surprised how much smoother a PTX grinding wheel or brush wheel is.



**PTX FLEECE (Nonwoven) Wheel**  
Elastic nylon fleece impregnated with abrasives for a first-class finish. Produces shadow-free matte, satin and polished finishes. For removing oxidation on stainless steel and nonferrous metals and also suitable for smoothing wooden surfaces. Very high fleece content by fleece compression.  
Diameter: 4"  
Width: 2", 4" or 6"  
Grit: 60, 80, 180, 280, 400, 600, 900



**PTX Interleaf (Combi) Wheel**  
Nylon fleece combined with abrasive flaps for matte finishing, burnishing and removing light scratches, oxidation and handling marks on stainless steel and all metals. For removing old paint on wood while smoothing at the same time.  
Diameter: 4"  
Width: 2", 4" or 6"  
Grit: 60, 80, 180



**PTX Flap Wheel**  
With radial abrasive cloth flaps in various grit sizes for removing rust, oxidation layers, minor scratches and for the regraining and burnishing of metals.  
Diameter: 4"  
Width: 2" or 4"  
Grit: 24, 40, 50, 60, 80, 120, 180, 240



**PTX CLEAN Wheel**  
Made of hard-textured, nonwoven fleece for cleaning and descaling welds, pore-deep removal of rust, oxidation and coatings, cleaning beams, bricks, etc. Produces an effective linear finish on stainless steel. A new production process guarantees 100% concentricity.  
Diameter: 4"  
Width: 2" or 4"  
Grit: Medium



**PTX GUM Wheel**  
Soft rubber impregnated with abrasive grit for the removal of minor scratches. Ideal for a bright, decorative linear finish on stainless steel and nonferrous metals and for smoothing wooden fibers.  
Diameter: 4"  
Width: 2" or 4"  
Grit: 60, 180

## PTX FLEECE (Nonwoven) Wheels

Part No.	Grit	Size
47411	60 grit	4" dia. x 4" wide
47412	80 grit	4" dia. x 4" wide
47413	180 grit	4" dia. x 4" wide
47414	280 grit	4" dia. x 4" wide
47415	400 grit	4" dia. x 4" wide
47416	600 grit	4" dia. x 4" wide
47417	900 grit	4" dia. x 4" wide
47401	60 grit	4" dia. x 2" wide
47402	80 grit	4" dia. x 2" wide
47403	180 grit	4" dia. x 2" wide
47404	280 grit	4" dia. x 2" wide
47405	400 grit	4" dia. x 2" wide
47406	600 grit	4" dia. x 2" wide
47422	80 grit	4" dia. x 6" extra wide
47423	180 grit	4" dia. x 6" extra wide

## PTX Interleaf (Combi) Wheels

Part No.	Grit	Size
47311	60 grit	4" dia. x 4" wide
47312	80 grit	4" dia. x 4" wide
47313	180 grit	4" dia. x 4" wide
47301	60 grit	4" dia. x 2" wide
47302	80 grit	4" dia. x 2" wide
47303	180 grit	4" dia. x 2" wide
47322	80 grit	4" dia. x 6" extra wide
47323	180 grit	4" dia. x 6" extra wide

## PTX Flap Wheels

Part No.	Grit	Size
47211	40 grit	4" dia. x 4" wide
47212	60 grit	4" dia. x 4" wide
47213	80 grit	4" dia. x 4" wide
47214	120 grit	4" dia. x 4" wide
47215	180 grit	4" dia. x 4" wide
47216	240 grit	4" dia. x 4" wide
47201	24 grit	4" dia. x 2" wide
47202	40 grit	4" dia. x 2" wide
47203	50 grit	4" dia. x 2" wide
47204	60 grit	4" dia. x 2" wide
47205	80 grit	4" dia. x 2" wide
47206	120 grit	4" dia. x 2" wide
47207	180 grit	4" dia. x 2" wide
47208	240 grit	4" dia. x 2" wide

## PTX CLEAN Wheels

Part No.	Grit	Size
47511	Medium (black)	4" dia. x 4" wide
47501	Medium (black)	4" dia. x 2" wide

## PTX GUM Wheels

Part No.	Grit	Size
47611	60 grit	4" dia. x 4" wide
47612	180 grit	4" dia. x 4" wide
47601	60 grit	4" dia. x 2" wide
47602	180 grit	4" dia. x 2" wide

### HOLLOW-CORE ABRASIVES HAVE MANY ADVANTAGES:

- Easy to mount – simply slide on and off
- 100% concentricity – no vibration
- Lower cost!

We continue to carry abrasives with core inserts.

See our Price List.



# Expansion Roller

Use with sanding belts, fleece and felt sleeves. The sleeves are simply pushed over the expansion roller and held securely in place by the centrifugal force. 3-1/2" dia. x 4" wide - **Part Number: 47005**

## TIPS & TRICKS

### Expansion Roller – Hard Rubber

Internal expansion slots now allow easier sleeve replacement and improved adjustment to the workpiece, as well as vibration absorption and concentricity.

**Part Number: 47005**



## Belt Sleeves for Expansion Roller



### PTX Zirconium Grinding Belt Sleeve

Made of zirconium. Removes deep scratches and grinds weld seams on metals. Far less rework is required as a result of using the time-saving linear grinding technique.

3-1/2" dia. x 4" wide  
Grit: 40, 60, 80, 120, 150, 180



### PTX "TZ" Pyramid Sleeve

New abrasive cloth with pyramid-shaped grit structure. Allows high material removal while producing a very fine finish, reducing the amount of work required when compared to grinding belt sleeves and fleece sleeves. Pyramid sleeves are ideal for pre-polishing for fine mirror finishes and for removing scratches and spot welds. Even roller scale can be removed easily.

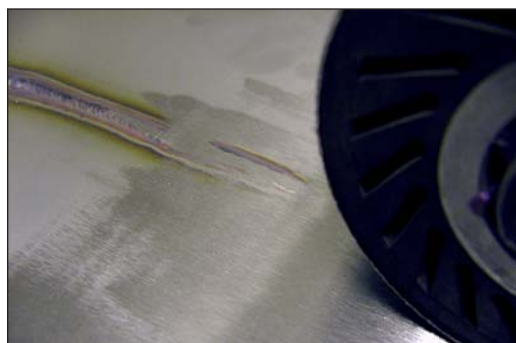
3-1/2" dia. x 4" wide  
Grit: A65/320, A45/400, A30/600, A16/1200, A06/2000



### PTX Fleece "Nonwoven" Sleeve

Nylon impregnated with abrasive grit for removing minor to medium scratch marks and oxidation coatings, matte and satin finishing and deburring applications.

3-1/2" dia. x 4" wide  
Grit: Coarse, Medium, Fine, Superfine



The expansion roller is helpful when grinding large areas and removing large welds.

### PTX Zirconium Grinding Belt Sleeves

Part No.	Grit	Size (dia. x width)	Quantity
42040	40 grit	3-1/2" x 4"	10 per pack
42060	60 grit	3-1/2" x 4"	10 per pack
42080	80 grit	3-1/2" x 4"	10 per pack
42120	120 grit	3-1/2" x 4"	10 per pack
42150	150 grit	3-1/2" x 4"	10 per pack
42180	180 grit	3-1/2" x 4"	10 per pack

### PTX "TZ" Pyramid Sleeves

Part No.	Grit	Size (dia. x width)	Quantity
42265	A65/320 grit	3-1/2" x 4"	10 per pack
42245	A45/400 grit	3-1/2" x 4"	10 per pack
42230	A30/600 grit	3-1/2" x 4"	10 per pack
42216	A16/1200 grit	3-1/2" x 4"	10 per pack
42206	A06/2000 grit	3-1/2" x 4"	10 per pack

### "TZ" PYRAMID GRIT COMPARISON TABLE

	A65	A45	A30	A16	A06
Corresponds to grit size	320	400	600	1200	2000

### PTX Fleece "Nonwoven" Sleeves

Part No.	Grit	Size (dia. x width)	Quantity
42010	coarse (brown)	3-1/2" x 4"	5 per pack
42011	medium (red)	3-1/2" x 4"	5 per pack
42012	fine (blue)	3-1/2" x 4"	5 per pack
42009	superfine (grey)	3-1/2" x 4"	5 per pack

### FLEECE COMPARISON TABLE

	Coarse (brown)	Medium (red)	Fine (blue)	Superfine (grey)
Corresponds to grit size	80	180	280	400

## TIPS & TRICKS



To remove the grinding sleeve, place the expansion roller on a round object that is slightly smaller than the roller. Then push the sleeve down slightly using both hands.

# Abrasives for Polishing to High-gloss and Mirror Finish



**PTX Felt Sleeve**  
 Made of soft merino (endless) for polishing large stainless steel and nonferrous surfaces quickly to a mirror finish. Also suitable for hard plastics. Must be used with the expansion roller.  
 3-1/2" dia. x 4" wide  
**Part Number: 42013**



**PTX SuperPolish Sleeve**  
 Revolutionary special fleece produces perfect brilliant, shadow-free mirror finishes on stainless steel and nonferrous metal surfaces using polishing compounds (white and blue) and pink polishing cream. SuperPolish fleece is absorbent, does not smear and saves significant work time. Must be used with the expansion roller.  
 3-1/2" dia. x 4" wide - **Part Number: 42013N**

## Polishing and Maintenance Products



**PTX Pre-grinding & Polishing Compound**  
 Essential for polishing all metals, including stainless steel, aluminum, etc.  
**PTX® WHITE** pre-polishing compound (23 oz.)  
**Part Number: 40013**  
**PTX® BLUE** finishing compound (23 oz.)  
**Part Number: 40014**  
 Cardboard dispenser contains 23 oz. (approx.)



**PTX Polishing Cream, Pink**  
 For finishing. Produces a perfect mirror finish on stainless steel and nonferrous metals when used with the SuperPolish Sleeve.  
**Can, 2.2 lbs. - Part Number: 40015**  
**Miniature tube, 2 oz. (approx.) - Part Number: 40015T**



**PTX Lime (noncaustic)**  
 For removing cream and compound residues. Scatter on the surface, and wipe off with a microfiber cloth.  
**Can, 2.2 lbs. - Part Number: 40016**  
**Aluminum scatter container - P/N: 4002A**



**Microfiber Cloths**  
 For pore-deep cleaning and even distribution of maintenance products and polishes. Our microfiber cloths produce a top finish on all materials.  
**Size: 13" x 14" - Part Number: 40030**



**Brilliance-Clean**  
 For streak- and residue-free cleaning of all surfaces, including stainless steel, steel, aluminum, brass and copper. Brilliance-Clean is not harmful to plastics, wood or coated surfaces. It removes fingerprints, dust, compound residue, minor oil and grease marks and adhesive residue effortlessly. Evaporates quickly without leaving any residue on the surface.  
**Canister (including spray bottle), 1.3 gal. - P/N: 40051**  
**Spray bottle, 17 oz. - Part Number: 40050**



**POLY Protection (oil film)**  
 For cleaning and preserving finished and polished stainless steel and nonferrous metal surfaces. Protects against shadows and finger and water marks for a long time. Spray on and rub off with a microfiber cloth. Produces a darker effect on finished surfaces. Also suitable for food-grade and outdoor use.  
**Canister (including spray bottle), 1.3 gal. - P/N: 40012**  
**Spray bottle, 17 oz. - Part Number: 40011**

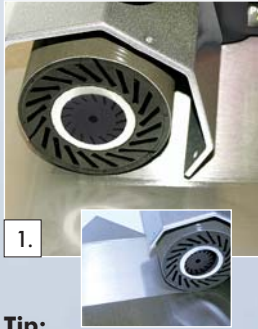


**INOX-Protect (hard sealant)**  
 Protects finished and polished metal surfaces (stainless steel, steel, aluminum, brass, copper, etc.) with a clear, dry adhesive film. Removes fingerprints and other dirt.  
**Canister (including spray bottle), 1.3 gal. - P/N: 40041**  
**Spray bottle, 17 oz. - Part Number: 40040**



## A perfect mirror finish on stainless steel and nonferrous metals.

The newly developed grinding and polishing system, featuring special "TZ" Pyramid and SuperPolish fabrics from CS Unitec, produces a perfect mirror finish quickly and in just a few steps.



**1.**

**Tip:** When grinding with "TZ" Pyramid abrasives, you must also move longitudinal and diagonally to the working direction to ensure that the material is removed evenly.

**Step 1**  
Prepare with "TZ" Pyramid sleeve A 45 (Gr 400) or A 65 (Gr 320) to remove roller scale, scratches and minor unevenness. Then rework with "TZ" Pyramid A 30 (Gr 600) and finish with A 16 (Gr 1200). We recommend that you prepare lower-quality stainless steel (with minor imperfections, etc.) or very hard material with A 06 (Gr 2000).

**Step 2**  
Use the yellow SuperPolish sleeve for the main polishing process in conjunction with preparation and finishing compound.

**Important:** After each step, remove the compound residue from the workpiece with PTX Lime and a microfiber cloth.

**Step 3**  
Finally, use the yellow SuperPolish sleeve together with the finish polishing cream. This time, only polish in a single direction.

**The result...  
a brilliant mirror finish!**



**3.**

**Tip:** With the pre-polishing compound you should also work longitudinal and diagonally to the working direction. This is not necessary for working with the finish compound and polishing cream.



**2.**

## Maintain and protect finished or polished stainless steel surfaces.

Compound and cream residues can be removed using **PTX Lime**. Simply scatter on the lime and wipe it off using a microfiber cloth.

Compound residues, fingerprints, dust, minor oil and grease marks and adhesive residue can be removed effortlessly with **Brilliance-Clean**. Any residue will evaporate immediately.

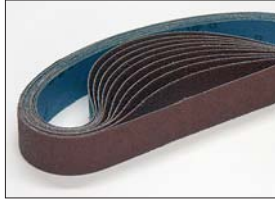


To protect finished or polished metal surfaces, spray **INOX-Protect** on the surface, rub off with a microfiber cloth, wipe the surface dry and then polish briefly. The surface will be protected by a dry, invisible film for several weeks. Polished finishes will not be darkened by this product.

# Abrasives for Pipe Constructions – Open or Closed



**PTX Grinding Belt Roller with stainless steel flanges**  
 For grinding, fleece, SuperPolish and felt belts. The belt roller is made of wear-resistant soft Vulculan with stainless steel discs on the sides. The surface is grooved to ensure that the abrasive belt does not slip.  
 Diameter: 3.5" x 2.8" **Part Number: 47006**



**PTX Grinding Belt in high-quality aluminum oxide (closed)**  
 For coarse and initial grinding, rust removal and smoothing round metal pipes. For use with grinding belt rollers. For use on closed pipe constructions, see TIPS & TRICKS below. **Dimensions: 1.2" x 24"**  
**Grit: 40, 60, 80, 120, 150, 180, 240**  
 See ordering information at right.



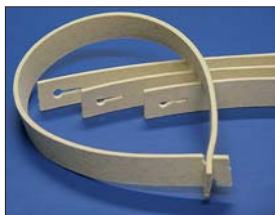
**PTX "TZ" Pyramid Belt (closed)**  
 New abrasive fabric with pyramid-shaped grit structure for removing scratches, roller scale and spot welds. "TZ" Pyramid belts allow high material removal while producing a very fine finish. They are ideal for the initial grinding before polishing to a mirror finish. Because the grit fineness is increased slowly, it is possible to omit several operations. For

use with grinding belt rollers. For use on closed pipe constructions, see TIPS & TRICKS below. **Dimensions: 1.2" x 24"**; **Grit: A65, A45, A30, A16, A06**  
 See ordering information at right.



**PTX Fleece Nonwoven Belt (open)**  
 Buttonhole fastening system for fine grinding and pre-polishing on open and closed pipe constructions and handrails. The fleece belt can be opened and closed as often as necessary. For use with grinding belt rollers. International patent and design protected.  
**Dimensions: 1.2" x 26"**  
**Grit: coarse, medium, fine, superfine**  
 See ordering information at right.

↑  
 With buttonhole –  
**PATENTED!**  
 ↓



**PTX Felt Belt (open)**  
 Made of merino felt with buttonhole fastening system for polishing work on open and closed pipe constructions and handrails. The polishing belt can be opened and closed as often as necessary. For use with grinding belt rollers and our polishing compounds and creams. Use a separate felt belt for each compound and cream grit. Do not use compounds with different grits on felt. International patent and design protected.

**Dimensions: 1.2" x 26"**; **Part Number: 49004**



**PTX Special Adhesive Tape**  
 With glass fabric insert for joining grinding belts. Strong, heat-resistant adhesive force. For joining PTX grinding and "TZ" Pyramid belts for use on closed pipe constructions. Affix the adhesive tape over the entire length of the grinding belt, overlapping approximately 370°.  
**Dimensions: 1" x 165'** **Part Number: 49000**



**PTX SuperPolish Belt (closed)**  
 For a perfect mirror finish on pipe constructions and handrails. SuperPolish is a new, special micro fleece that produces a perfect, brilliant mirror finish on stainless steel and nonferrous metals. Smears and shadows are eliminated

when used with our polishing compounds (white and blue) and pink cream. SuperPolish is absorbent and saves lots of work time. For use with grinding belt rollers.

**Dimensions: 1.2" x 26"** (not available with buttonhole fastening system)  
**Part Number: 49004N**

## PTX Grinding Belts (Aluminum Oxide)

Part No.	Grit	Size (width x length)	Quantity
49040	40 grit	1.2" x 24"	10 per pack
49060	60 grit	1.2" x 24"	10 per pack
49080	80 grit	1.2" x 24"	10 per pack
49120	120 grit	1.2" x 24"	10 per pack
49150	150 grit	1.2" x 24"	10 per pack
49180	180 grit	1.2" x 24"	10 per pack
49240	240 grit	1.2" x 24"	10 per pack

## PTX "TZ" Pyramid Belts

Part No.	Grit	Size (width x length)	Quantity
49365	A65/320 grit	1.2" x 24"	10 per pack
49345	A45/400 grit	1.2" x 24"	10 per pack
49330	A30/600 grit	1.2" x 24"	10 per pack
49316	A16/1200 grit	1.2" x 24"	10 per pack
49306	A06/2000 grit	1.2" x 24"	10 per pack

## PTX Fleece Nonwoven Belts (open)\*

Part No.	Grit	Size (width x length)
49001	coarse (brown)	1.2" x 26"
49002	medium (red)	1.2" x 26"
49003	fine (blue)	1.2" x 26"
49007	superfine (grey)	1.2" x 26"

\* Feature buttonhole fastening system

## TIPS & TRICKS

### Grinding and polishing closed pipe constructions

Fleece and felt belts with the patented buttonhole fastening system are ideal for working on closed pipe constructions and handrails. The grinding belt can be placed over the pipe and closed or opened again in a twist using the buttonhole system. Changing a belt is quick and easy. The belt can be opened and closed as often as required.

Closed belts such as the high-quality aluminum oxide belt or the "TZ" Pyramid belt must be cut open to work on closed pipe constructions. Place the belt over the pipe and join using our special adhesive tape (P/N 49000) over the entire length (approx. 370°).

