



Spare parts list

VARILEX® 1802 HT

110 - 120V

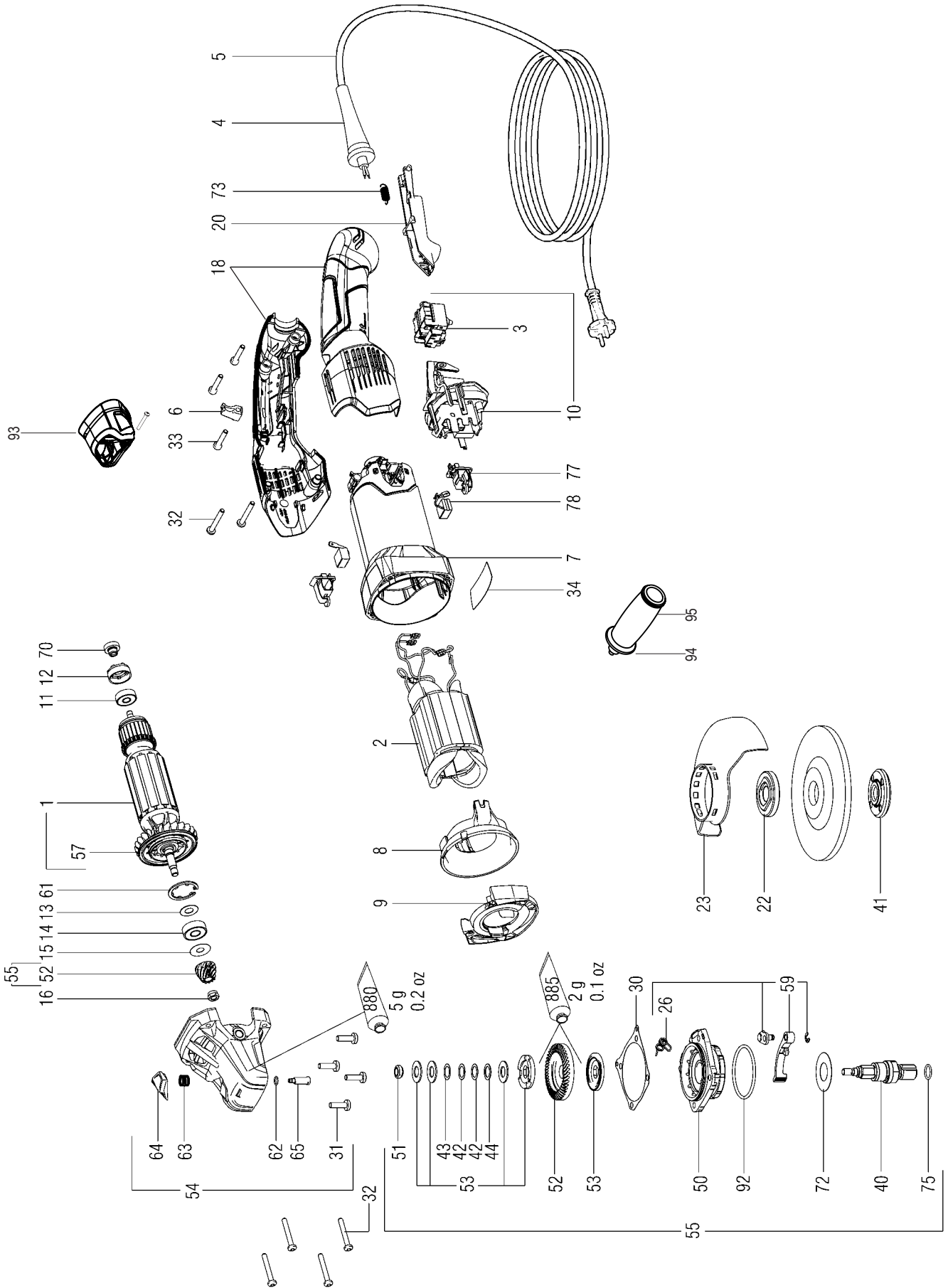
&

220-240V



Made in Germany • www.csunitec.com

DETAILED DRAWING 110V - 120V

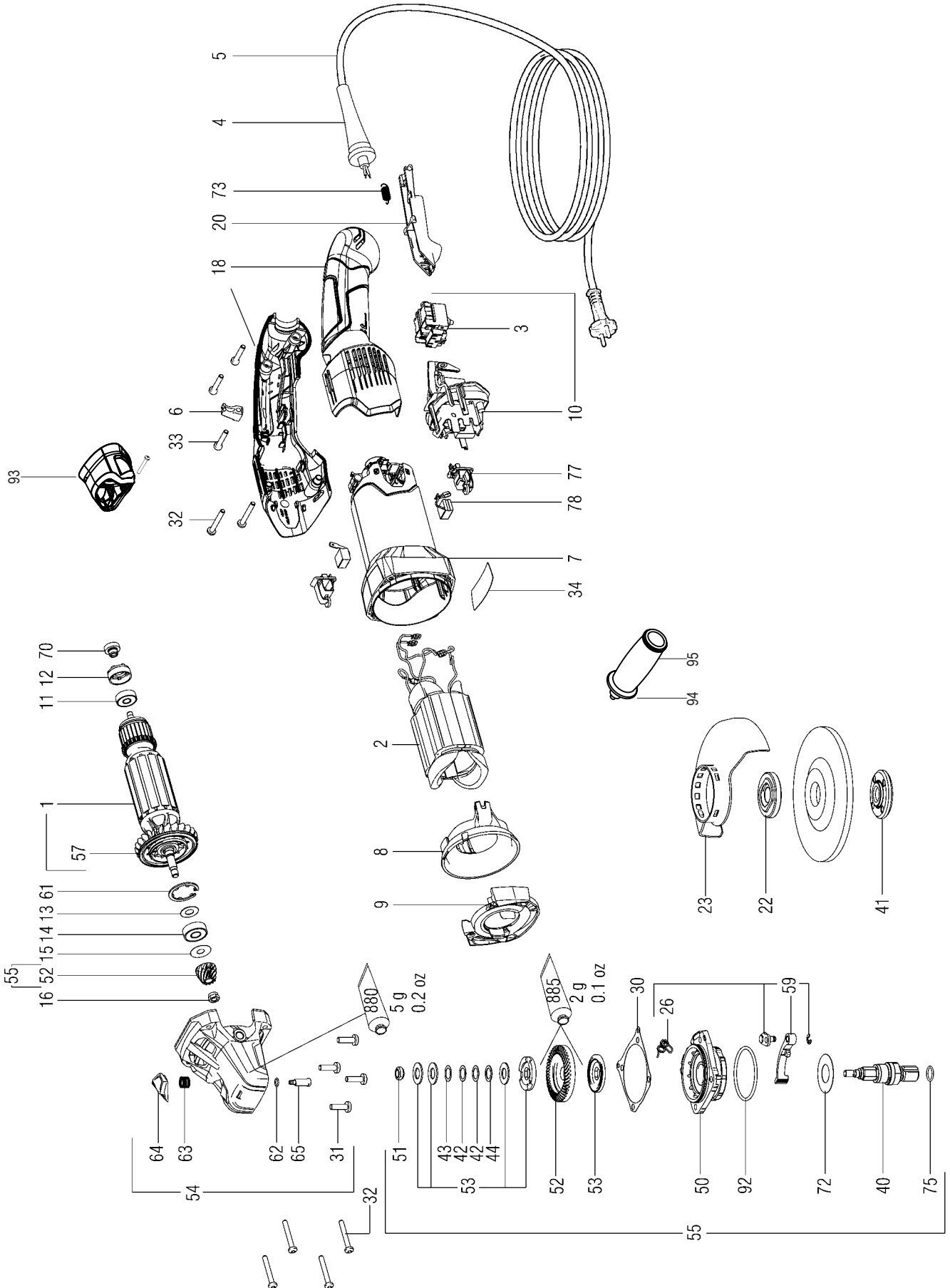


SPARE PARTS LIST

Pos.	Part-No.	Item	Stk. / Pcs.	Pos.	Part-No.	Item	Stk. / Pcs.
1	50543	Armature 120 V	1	42	50522	Washer 10,2x14,8x0,2	2
2	50544	Field coil 120 V	1	43	50523	Washer 10,2x14,8x0,1	1
3	50542	Switch 2-pole	1	44	50524	Washer 10,2x14,8x0,5	1
4	50503	Cable sleeve	1	50	50520	Flange	1
5	50545	Stecker Cable with GB-plug	1	51	50525	Nut	1
	50548	Stecker Cable with UL/CSA-plug		52	50531	Bevel gear with pinion	1
6	50415	Cable clip	1	53	50532	Friciton wahser set	1
7	50505	Motor housing	1	54	50517	Gear housing	1
8	50506	Baffle	1	55	50534	Safety clutch with pinion	1
9	50507	Baffle	1	57	50536	Fan with dust guard	1
10	50546	Electronic unit with switch	1	59	50538	Clamping lever	1
11	50508	Ball bearing 6x19x6	1	61	50563	Retaining ring	1
12	50424	Rubber bushing	1	62	50564	O-ring	1
13	50510	Washer 8x17x0,4	1	63	50565	Pressure spring	1
14	50562	Ball bearing 8x22x7	1	64	50566	Push button	1
15	50511	Washer 7x19,5x0,2	1	65	50567	Bolt	1
16	50512	Hexagon nut	1	70	50509	Tacho disc	1
18	50513	Handle 2-part	1	72	50519	Washer	1
20	50514	Switch trigger	1	73	50515	Pressure spring	1
22	50431	Claming flange	1	75	50521	O-ring	1
23	65042	Wheel guard D 125 mm	1	77	50535	Brush holder	1
26	50526	Spring clip	1	78	50537	Carbon brush set	1
30	50527	Gasket	1	92	50541	O-ring	1
31	50528	Fillister head screw	4	93	65040	Dust Prevent Cover	1
32	50435	Self-tapping fillister head screw	6	94	50408	Handgrip	1
33	50529	Self-tapping fillister head screw	3	95	52701s	Foam for handgrip	1
34	50547	Rating plate	1	880	50539	Grease 100 gr.	1
40	50518 50550	M14 Spindle M14 Spindle 5/8	1	885	50540	Grease SF 011 50 gr. 1,8oz	1
41	50432 50549	Flange nut 5/8	1	IMPORTANT INFORMATION: Grease Pos. 880 is only for the gear, the grease Pos. 885 is only for the gear flange. Do not interchange them!			

Date: 01.03.2018 Subject to change!

DETAILED DRAWING 220V - 240V



SPARE PARTS LIST

Pos.	Part-No.	Item	Pcs.	Pos.	Art-No.	Item	Pcs.
1	50500	Armature 230 V	1	42	50522	Washer 10,2x14,8x0,2	2
2	50501	Field coil 230 V	1	43	50523	Washer 10,2x14,8x0,1	1
3	50542	Switch 2-pole	1	44	50524	Washer 10,2x14,8x0,5	1
4	50533	Cable sleeve	1	50	50520	Flange	1
5	50502	Cable with CE-plug	1	51	50525	Nut	1
	50561	Cable with CH-plug		52	50531	Bevel gear with pinion	1
6	50415	Cable clip	1	53	50532	Friciton wahser set	1
7	50505	Motor housing	1	54	50517	Gear housing	1
8	50506	Baffle	1	55	50534	Safety clutch with pinion	1
9	50507	Baffle	1	57	50536	Fan with dust guard	1
10	50504	Electronic unit with switch	1	59	50538	Clamping lever	1
11	50508	Ball bearing 6x19x6	1	61	50563	Retaining ring	1
12	50424	Rubber bushing	1	62	50564	O-ring	1
13	50510	Washer 8x17x0,4	1	63	50565	Pressure spring	1
14	50562	Ball bearing 8x22x7	1	64	50566	Push button	1
15	50511	Washer 7x19,5x0,2	1	65	50567	Bolt	1
16	50512	Hexagon nut	1	70	50509	Tacho disc	1
18	50513	Handle 2-part	1	72	50519	Washer	1
20	50514	Switch trigger	1	73	50515	Pressure spring	1
22	50431	Claming flange	1	75	50521	O-ring	1
23	65042	Wheel guard D 125 mm	1	77	50535	Brush holder	1
26	50526	Spring clip	1	78	50553	Carbon brush set	1
30	50527	Gasket	1	92	50541	O-ring	1
31	50528	Fillister head screw	4	93	65040	Dust Prevent Cover	1
32	50435	Self-tapping fillister head screw	6	94	50408	Handgrip	1
33	50529	Self-tapping fillister head screw	3	95	52701s	Foam for handgrip	1
34	50530	Rating plate	1	880	50539	Grease 100 gr.	1
40	50518	Spindle M14	1	885	50540	Grease SF 011 50 gr. 1,8oz	1
41	50432	Flange nut M14	1	IMPORTANT INFORMATION: Grease Pos. 880 is only for the gear, the grease Pos. 885 is only for the gear flange. Do not interchange them!			

Stand: 01.03.2018

Date: 01.03.2018

Subject to change!

www.csunitec.com
info@csunitec.com

1-800-700-5919 (US/CA)

+1-203-853-9522 (Intl.)



CS UNITEC, Inc. 22 Harbor Avenue, Norwalk, CT 06850
4330 Center St., Deer Park, TX 77536

Phone: 800-700-5919 • 203-853-9522

Fax: 203-853-9921 • Email: info@csunitec.com • CSunitec.com

*View product demonstrations
at CSunitec.com.*



1-800-700-5919 (US/CA)

ALL SPECIFICATIONS ARE SUBJECT TO CHANGE

© Copyright 2023, CS Unitec, Inc., 1-23-5M

www.csunitec.com
info@csunitec.com

+1-203-853-9522 (Intl.)