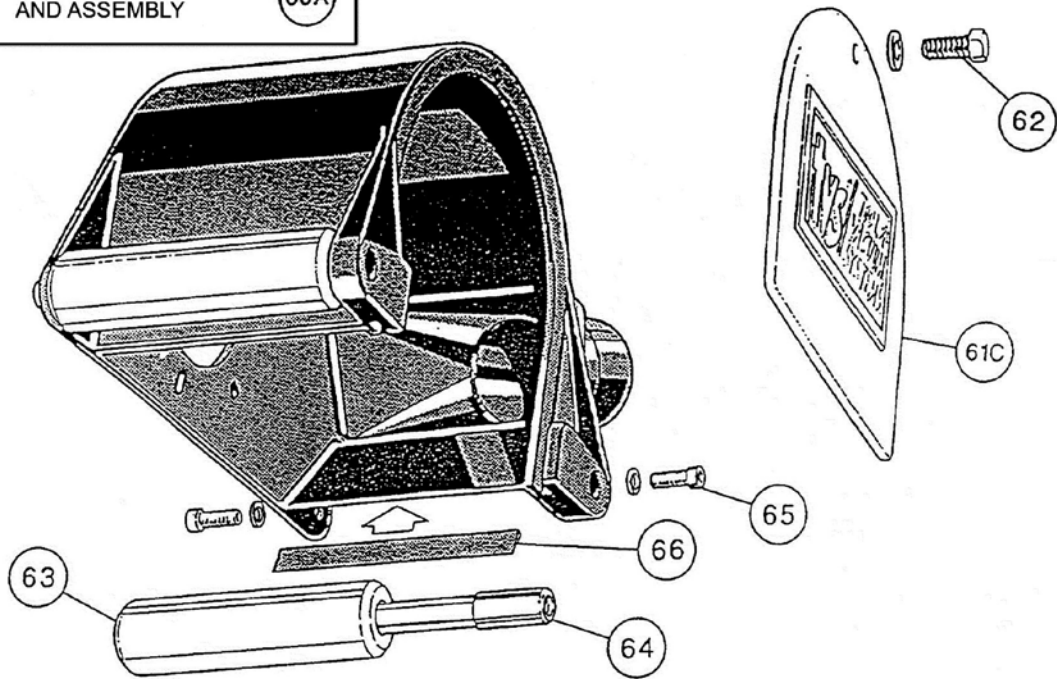
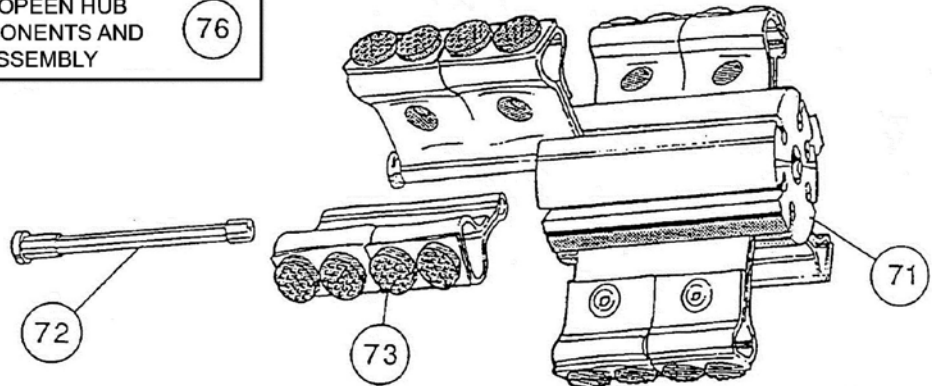


EXPLODED VIEW

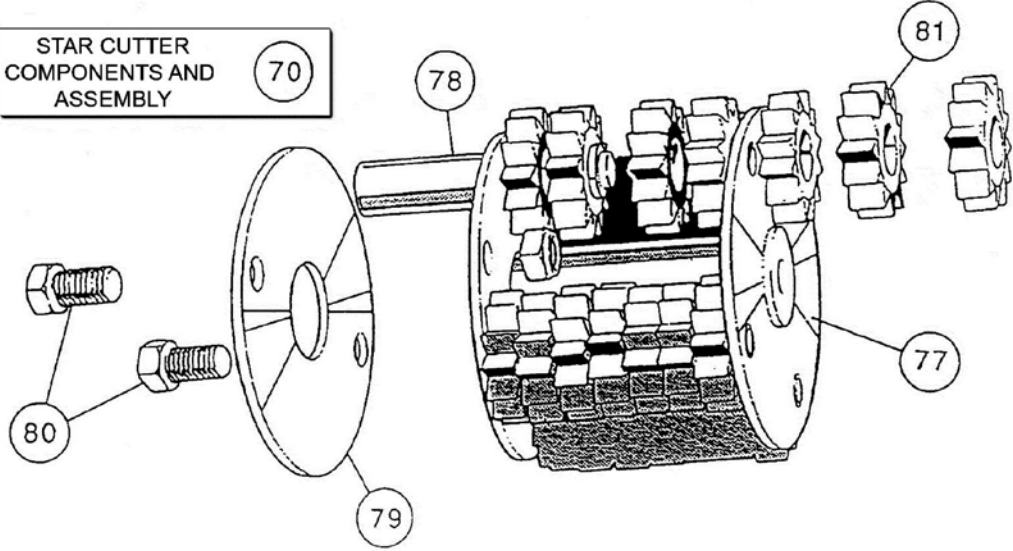
SHROUD COMPONENTS AND ASSEMBLY (60A)



ROTOPEEN HUB COMPONENTS AND ASSEMBLY (76)

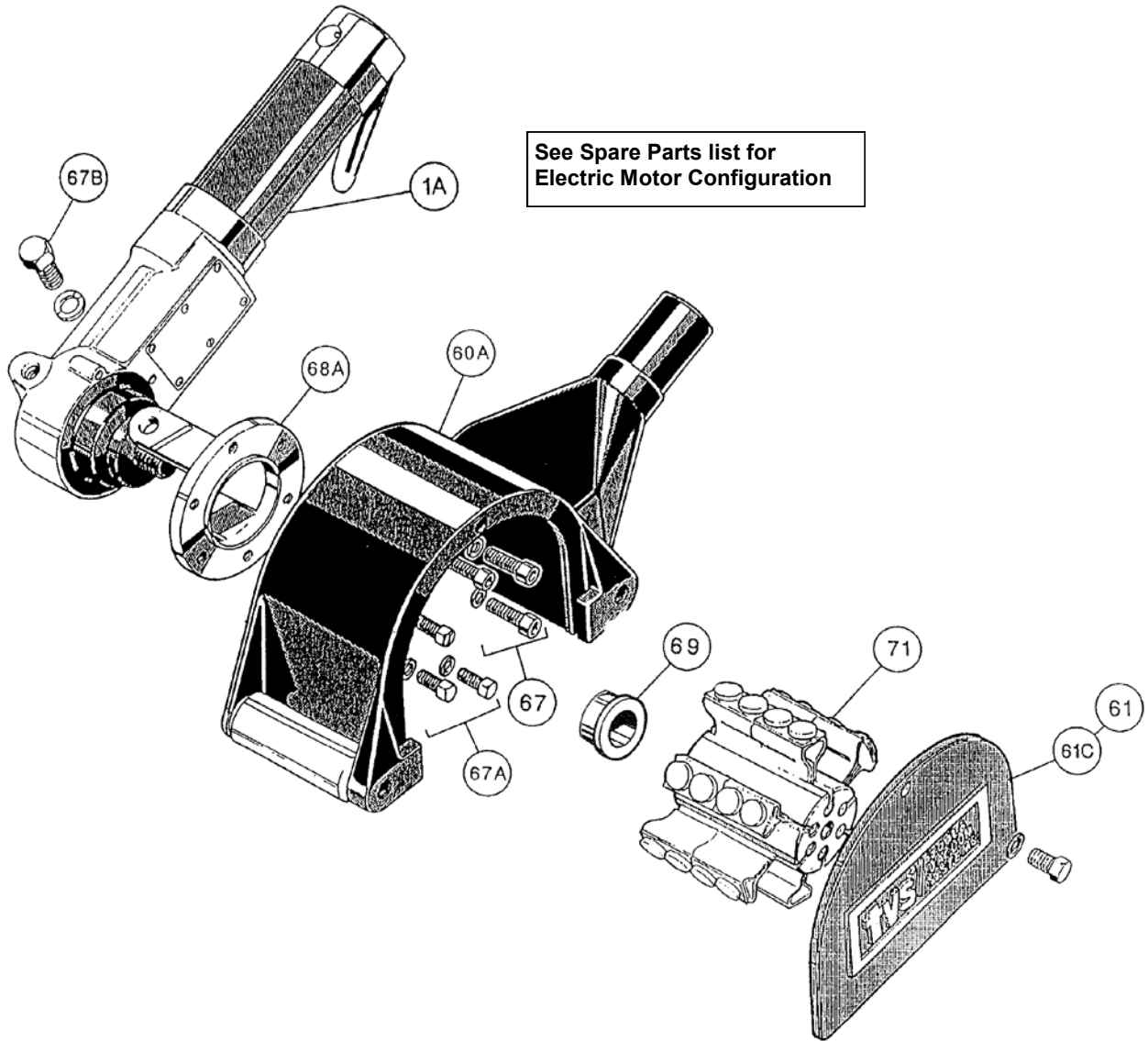


STAR CUTTER COMPONENTS AND ASSEMBLY (70)



EXPLODED VIEW

2" PPT & Air Motor
shown in diagram



PARTS LIST

Item	Part No	Description	Item	Part No	Description
1A	314.ARA2	Air Motor	70	438.0209	2" Cutter Hub - includes pins
	312.1510	Electric Motor 110v		438.0409	4" Cutter Hub - includes pins
	312.1520	Electric Motor 220v	71	312.D205	2" Rotopeen Hub only
2-59		<i>Not Assigned</i>		312.D405	4" Rotopeen Hub only
60A	437.0225	Shroud S/Assembly 2"	72	312.D213	Pin set (Flap retaining) 2"
	437.0425	Shroud S/Assembly 4"		312.D413	Pin set (Flap retaining) 4"
62	508.D216	1/4" screw set (End Plate to Shroud - prior 7/2014)	73	312.MRPC	Rotopeen flap (Type C)
	508.D216A	M8 screw set (End plate to Shroud - after 7/2014)		312.MRPD	Rotopeen flap (Type D)
63	312.G200	Roller 2"	74-75		<i>Not Assigned</i>
	312.G400	Roller 4"	76	438.0205	2" Rotopeen Hub - includes pins
64	312.D201	Axle set 2"		438.0405	4" Rotopeen Hub - includes pins
	312.D401	Axle set 4"	77	438.0209A	2" Cutter Hub only
65	Not sold separately	M5 Socket screw set (Rollers) - (Part of axle sets)		438.0409A	4" Cutter Hub only
66	312.D215	2" Gasket PPT shroud (skirt)	78	312.D210	Axle (Cutter) 2"
	312.D415	4" Gasket PPT shroud (skirt)		312.D410	Axle (Cutter) 4"
67	508.D218	Socket screw (Shroud to Collar)	79	438.0210	Plate (Axle retaining) was 312.D211
67A	508.0205	Hex screw kit (Shroud to Collar)	80	508.D212	Hex screw set
67B	508.D221 or 312.E212	M8 Hex screw kit (Collar to Air & Electric Motor Head)	81	312.S200	Star Cutter
67C	508.D230	M5 Fixing kit (Shroud to Collar - Electric Motor)		312.R200	Beam Cutter
67D	508.D235	M6 Fixing kit (Shroud to Collar - Electric Motor)		438.0220	Complete 2" Star Cutter Hub Assembly
68A	312.D219	Collar (Air motor)		438.0225	Complete 2" Beam Cutter Hub Assembly
	312.T200A	Collar (Electric motor)		438.0420	Complete 4" Star Cutter Hub Assembly
69	312.2335A	Spacer (Electric motor)		438.0425	Complete 4" Beam Cutter Hub Assembly
				805.0140	Allen key 1/4" AF

A Stripping and Assembly tool kit (Part Number 312.A529) is available for the air motor which includes **stripping and assembly instructions**.

A separate Flex electric motor service layout may have been supplied with this Operation and Maintenance manual, it is supplied for use by trained electrical engineers and authorised repair shops only.

This product meets the requirements of the following European Directives: 2006/42/EC-(Safety Directive), 2006/95/EC - (Low Voltage Directive), and 2004/108/EC - (Electromagnetic Compatibility)

It meets the requirements of the following Standards: EN50144-1:2001, EN55014-1:1997, EN61000-3-2:1995, EN61000-3-3:1995 and EN55014-2:1997

Noise level measured in accordance with EN ISO 15744: 2002
Vibration measured in accordance with: EN ISO 28927-3:2012 and EN ISO 20643:2005

NOTE: The above vibration levels were obtained from tri-axial measurements to comply with the requirements of "The Control of Vibration at Work Regulations 2005" and to EN ISO 28927 and EN ISO 20643 series of standards. These values are at least 1.4 times larger than the values obtained from single axis measurements.

Trelawny Surface Preparation Technology operates a policy of continuous product development and refinement and therefore reserves the right to change technical specifications and product designs without giving prior notice.

© Copyright 2009, Trelawny SPT Limited, CV31 1XT. UK All rights reserved. Any unauthorised use or copying of the contents or part thereof is prohibited. This applies to trademarks, model denominations, part numbers and drawings.

Use only genuine Trelawny spares.

The use of non-Trelawny spare parts invalidates the warranty.



TRELAWNY

SURFACE PREPARATION TECHNOLOGY

Distributed exclusively by:



22 Harbor Avenue, Norwalk, CT 06850 USA

Toll-Free: 800-700-5919

Phone: 203-853-9522

Fax: 203-853-9921

Email: info@csunitec.com

www.csunitec.com

