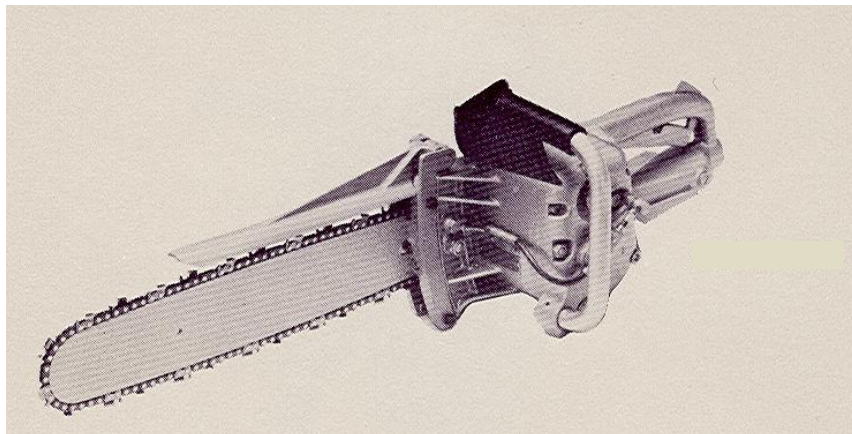


Pneumatic Chain Saw

5 1007

5 1008



Repair Manual and Spare Parts List

Spare Part List				
Description:			Part and drawing number:	
Pneumatic Chain Saw			5 1007	
Item	Qty.	Description	Part and drawing no.	Remarks
2	1	Motor housing, Assy.	5 1003 1910	items 7- 25
7	1	Socket head screw	9 1110 4270	
8	1	Hexagonal nut	9 1210 0030	
9	1	Square nut with journal	9 1223 0290	
10	2	Spring lock washer	9 3314 0040	
11	1	Guide strip	5 1003 7050	
12	1	Fastening bolt	9 1152 9130	
13	1	Spring lock washer	9 3314 0050	
14	1	Hexagonal nut	9 1210 0020	
15	1	Spring lock washer	9 3314 0050	
16	1	Hexagonal nut	9 1222 0270	
19	4	Stud screw	9 1127 5040	
20	4	Spring lock washer	9 3314 0060	
21	4	Hexagonal nut	9 1203 0050	
23	2	Grooved pin	9 1626 0190	
25	1	Grooved cylindrical pin	9 1625 0030	
33	1	Cylinder bushing	5 1003 1020	
34	1	Rotor, Assy.	5 1007 1920	with item 46
35	1	End plate	5 1003 1110	
36	1	End plate	5 1003 1100	
37	1	Sleeve nut	9 1225 0060	
38	1	Spacer ring	5 1003 1090	
39	1	Angular contact ball bearing	9 1009 0080	
40	1	Grooved nut	9 1224 0020	
41	1	Grooved ball bearing	9 1005 0090	
42	1	Brace	9 1630 0810	
43	5	Vane	5 1007 1050	
46	1	Feather key	9 1501 3450	
48	1	Eccentric piece for oil pump	5 1003 5030	
49	1	Cylinder pin	9 1631 0140	
51	2	Belleville spring washer	9 1802 0010	
52	1	Spacer ring	5 1003 1120	
54	1	Spacer ring	5 1003 1080	
55	1	Guard plate	5 1003 7060	
56	1	Chain wheel	5 1003 7070	
57	1	Washer	5 1003 7080	

Spare Part List

Description: <b style="text-align: center;">Pneumatic Chain Saw	Part and drawing number: <b style="text-align: center;">5 1007
--	---

Item	Qty.	Description	Part and drawing no.	Remarks
58	1	Spring washer	9 3312 0030	
59	1	Hexagonal screw	9 1107 5110	
92	1	Oil tank cover	5 1003 5050	
96	1	Pump top part, Assy.	5 1003 5920	
	1	Handle, Assy.	5 1007 6000	Item 65-88
65	1	Handle	5 1005 6910	
66	1	Gasket	9 1903 0990	
69	1	Steel ball	9 1017 0070	
70	1	Pressur spring	9 1803 3490	
71	1	Lubrication pipe	5 1007 5040	
72	1	O-Ring	9 1901 2270	
73	1	Cylinder pin	9 1619 0480	
74	1	Valve lever	5 1006 3030	
75	1	Cylinder pin	9 1619 0350	
76	1	Pressure spring	9 1803 0740	
77	1	Adjusting screw	9 1151 9010	
78	1	Locking screw	9 1150 9020	
79	1	Socket head screw	9 1150 9030	
80	1	Gasket	9 1903 0260	
81	1	Locking lever	5 1006 3040	
82	1	Cylinder pin	9 1619 1210	
83	1	Pressure spring	9 1803 2640	
84	1	Gasket	9 1903 0340	
85	4	Spring lock washer	9 3314 0070	
86	4	Hexagonal screw	9 1107 4080	
87	1	Reducing nipple	9 2203 0100	
88	1	Gasket	9 1908 0110	
103	2	Valve, Assy.	5 1003 5930	
107	1	Plastic hose	9 3606 0020	
108	1	Pump plunger	5 1003 5080	
110	4	Counter-sunk screw	9 1114 2030	
114	1	Sealing	9 1908 0120	
115	3	Socket head screw	9 1115 4090	
116	3	Spring lock washer	9 3314 0070	
121	1	Locking screw, Assy.	9 1150 9380	

Spare Part List				
Description: Pneumatic Chain Saw			Part and drawing number: 5 1007	
Item	Qty.	Description	Part and drawing no.	Remarks
122	1	O- ring	9 1901 4070	
125	1	Hollow screw, Assy.	5 1003 5090	
131	1	Round hose nipple	5 1006 5100	
132	2	Gasket	9 1903 0710	
133	1	Plastic hose	9 3606 0030	
135	1	Plastic hose	9 3606 0040	
136	1	Round hose nipple	5 1006 5100	
137	2	Gasket	9 1903 0710	
138	1	Hollow screw	5 1003 5110	
141	1	Mounting bracket	5 1003 5120	
142	2	Socket head screw	9 1115 2050	
151	1	Bow handle, Assy.	5 1006 6910	
158	1	Plate	5 1003 6020	
159	1	Hexagonal screw	9 1107 5170	
160	1	Spring washer	9 3312 0030	
171	1	Chain wheel guard	5 1003 7090	
174	1	Stop bar	5 1003 7100	
175	1	Spike bar	5 1003 7110	
177	2	Hexagonal screw	9 1107 4030	
178	2	Spring lock washer	9 3314 0070	
182	1	Chain guard foldable, Assy.	5 1006 9910	
183	2	Hexagonal screw	9 1107 4070	
185	2	Spring washer	9 3312 0020	
190	1	Hand protection, Assy.	5 1005 6920	with item 191
191	3	Sheet metal screw	9 1135 9050	
193	1	Chain catch bolt	5 1006 7130	
600	1	Chain wheel guard	5 1007 9830	
601	1	Gasket	9 1903 0340	
602	1	Locking screw	9 1122 9040	
		Accessories		
	1	Wrench	9 1316 0080	
	1	Screw driver hexagonal WS 10	9 1314 0020	
	1	Screw driver hexagonal WS 5	9 1314 0030	
	1	Connecting nipple	9 2205 0610	

Spare Part List					
Description:				Part and drawing number:	
Pneumatic Chain Saw for Underwater Use				5 1008	
Item	Qty.	Description	Part and drawing no.		Remarks
2	1	Motor housing, Assy.	5 1005 1910		items 7- 25
7	1	Socket head screw	9 1110 4270		
8	1	Hexagonal nut	9 1210 0030		
9	1	Square nut with journal	9 1223 0290		
10	2	Spring lock washer	9 3314 0040		
11	1	Guide strip	5 1003 7050		
12	1	Fastening bolt	9 1152 9130		
13	1	Spring lock washer	9 3314 0050		
14	1	Hexagonal nut	9 1210 0020		
15	1	Spring lock washer	9 3314 0050		
16	1	Hexagonal nut	9 1222 0270		
19	4	Stud screw	9 1127 5040		
20	4	Spring lock washer	9 3314 0060		
21	4	Hexagonal nut	9 1203 0050		
23	2	Half- length taper grooved pin	9 1624 0190		
25	1	Grooved cylindrical pin	9 1625 0030		
33	1	Cylinder bushing	5 1003 1020		
34	1	Rotor, Assy.	5 1007 1920		with item 46
35	1	End plate	5 1003 1110		
36	1	End plate	5 1003 1100		
37	1	Sleeve nut	9 1225 0060		
38	1	Spacer ring	5 1003 1090		
39	1	Angular contact ball bearing	9 1009 0080		
40	1	Grooved nut	9 1224 0020		
41	1	Grooved ball bearing	9 1005 0090		
42	1	Brace	9 1630 0810		
43	5	Vane	5 1007 1050		
46	1	Feather key	9 1501 3450		
48	1	Eccentric piece for oil pump	5 1003 5030		
49	1	Cylinder pin	9 1631 0140		
51	2	Belleville spring washer	9 1802 0010		
52	1	Spacer ring	5 1003 1120		
54	1	Spacer ring	5 1003 1080		
55	1	Guard plate	5 1003 7060		
56	1	Chain wheel	5 1003 7070		
57	1	Washer	5 1003 7080		

Spare Part List				
Description:			Part and drawing number:	
Pneumatic Chain Saw for Underwater Use			5 1008	
Item	Qty.	Description	Part and drawing no.	Remarks
58	1	Spring washer	9 3312 0030	
59	1	Hexagonal screw	9 1107 5110	
92	1	Oil tank cover	5 1003 5050	
96	1	Pump top part, Assy.	5 1003 5920	
	1	Handle, Assy.	5 1007 6000	Item 65-88
65	1	Handle	5 1005 6910	
66	1	Gasket	9 1903 0990	
69	1	Steel ball	9 1017 0070	
70	1	Pressure spring	9 1803 3490	
71	1	Lubricator pipe	5 1007 5040	
72	1	O-Ring	9 1901 2270	
73	1	Cylinder pin	9 1619 0480	
74	1	Valve lever	5 1006 3030	
75	1	Cylinder pin	9 1619 0350	
76	1	Pressure spring	9 1803 0740	
77	1	Adjusting screw	9 1151 9010	
78	1	Locking screw	9 1150 9020	
79	1	Socket head screw	9 1150 9030	
80	1	Gasket	9 1903 0260	
81	1	Locking lever	5 1006 3040	
82	1	Cylinder pin	9 1619 1210	
83	1	Pressure spring	9 1803 2640	
84	1	Gasket	9 1903 0340	
85	4	Spring lock washer	9 3314 0070	
86	4	Hexagonal screw	9 1107 4080	
87	1	Reducing nipple	9 2203 0100	
88	1	Gasket	9 1908 0110	
103	2	Valve, Assy.	5 1003 5930	
107	1	Plastic hose	9 3606 0020	
108	1	Pump plunger	5 1003 5080	
110	4	Counter-sunk screw	9 1114 2030	
114	1	Sealing	9 1908 0120	
115	3	Socket head screw	9 1115 4090	
116	3	Spring lock washer	9 3314 0070	
121	1	Locking screw, Assy.	9 1122 9330	

Spare Part List					
Description:				Part and drawing number:	
Pneumatic Chain Saw for Underwater Use				5 1008	
Item	Qty.	Description	Part and drawing no.		Remarks
122	1	Flat sealing	9 1909 0040		
125	1	Hollow screw, Assy.	5 1003 5090		
131	1	Round hose nipple	5 1006 5100		
132	2	Gasket	9 1903 0710		
133	1	Plastic hose	9 3606 0030		
135	1	Plastic hose	9 3606 0040		
136	1	Round hose nipple	5 1006 5100		
137	2	Gasket	9 1903 0710		
138	1	Hollow screw	5 1003 5110		
141	1	Mounting bracket	5 1003 5120		
142	2	Socket head screw	9 1115 2050		
151	1	Bow handle, Assy.	5 1006 6910		
158	1	Plate	5 1003 6020		
159	1	Hexagonal screw	9 1107 5170		
160	1	Spring washer	9 3312 0030		
171	1	Chain wheel guard	5 1003 7090		
174	1	Stop bar	5 1003 7100		
175	1	Spike bar	5 1003 7110		
177	2	Hexagonal screw	9 1107 4030		
178	4	Spring lock washer	9 3314 0070		
182	1	Chain guard foldable, Assy.	5 1006 9910		
183	2	Hexagonal screw	9 1107 4070		
185	2	Spring washer	9 3312 0020		
190	1	Hand protection, Assy.	5 1005 6920		with item 191
191	3	Sheet metal screw	9 1135 9050		
193	1	Chain catch bolt	5 1006 7130		
194	1	Bend I/ A thread	9 2209 0150		
195	1	Pipe nut	9 1226 0020		
196	1	Plug	9 3401 0800		
600	1	Chain guard	5 1006 9830		
		Accessories			
	1	Wrench	9 1316 0080		
	1	Screw driver hexagonal WS 10	9 1314 0020		
	1	Screw driver hexagonal WS 5	9 1314 0030		
	1	Connecting nipple	9 2205 0610		

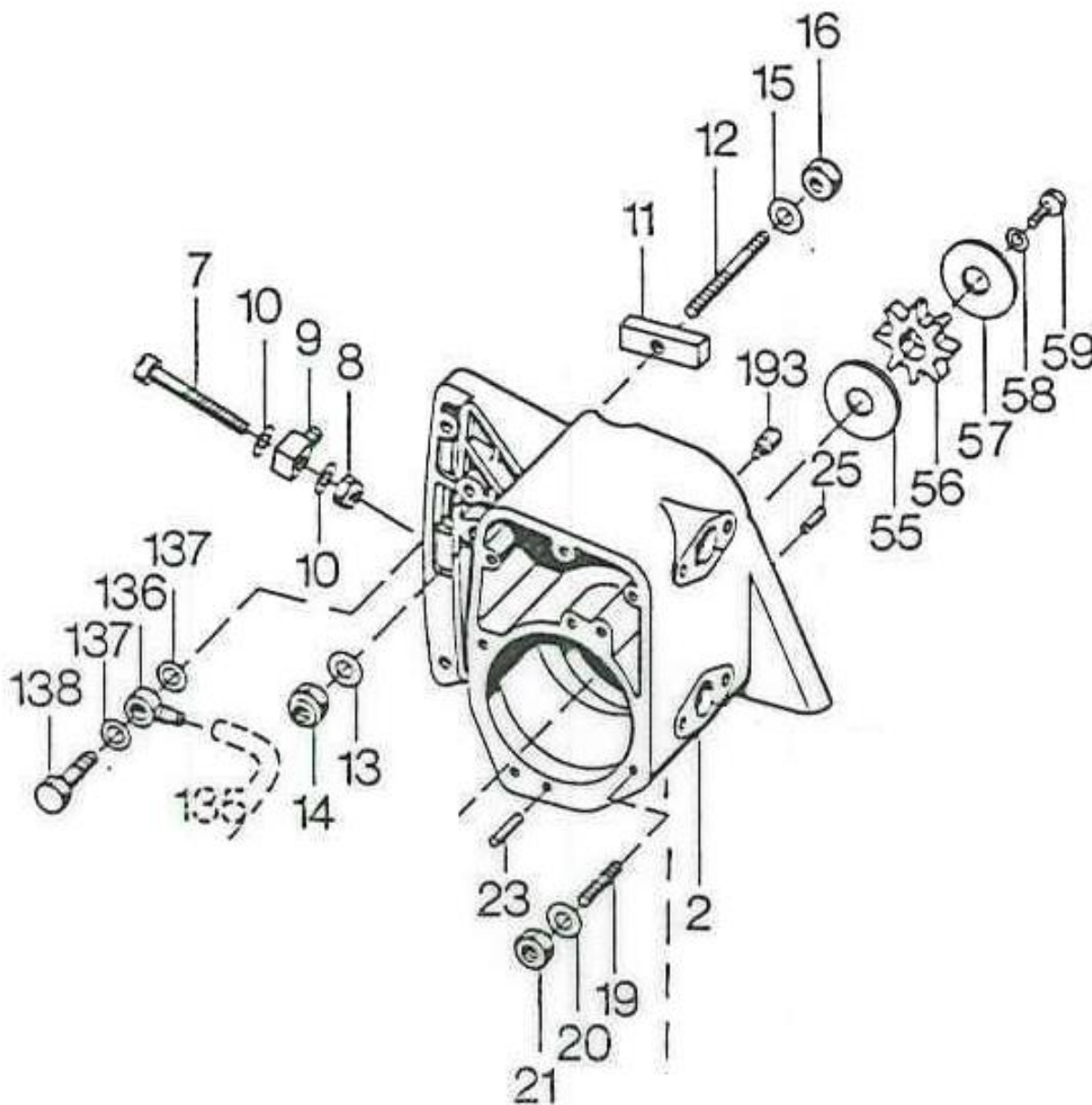
Spare Part List

Description:

Pneumatic Chain Saw

Part and drawing number:

5 1007 / 5 1008



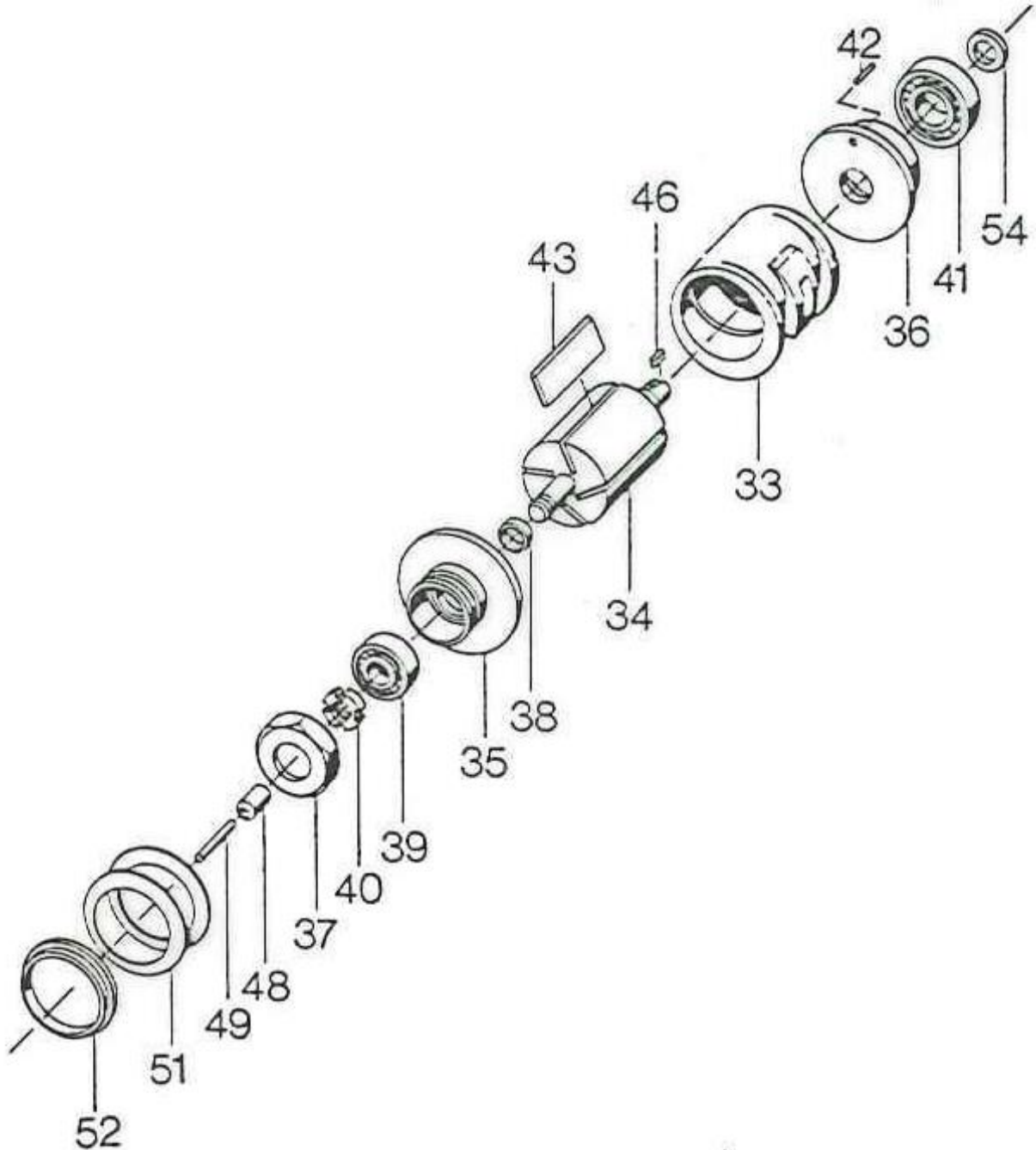
Spare Part List

Description:

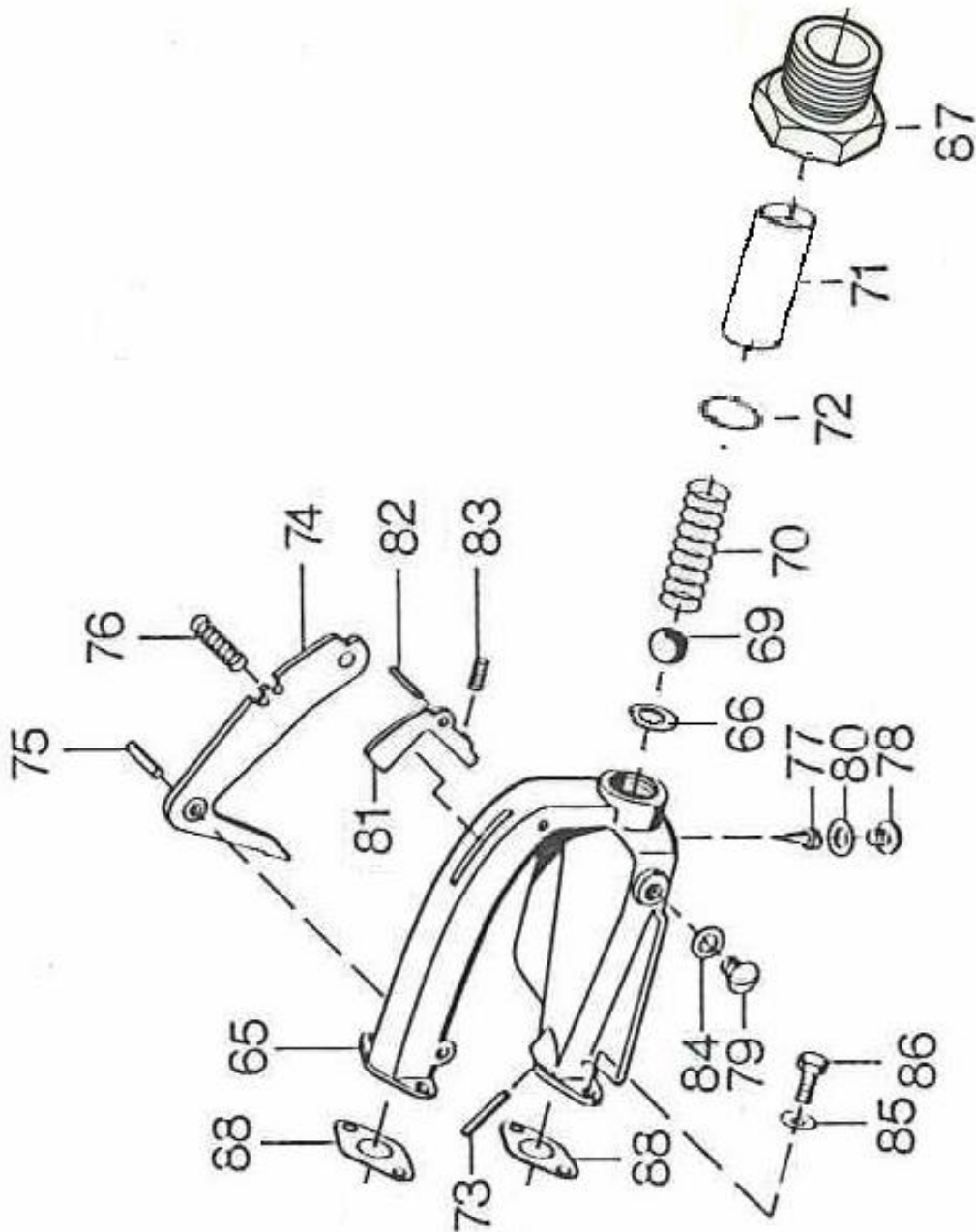
Pneumatic Chain Saw

Part and drawing number:

5 1007 / 5 1008



Spare Part List	
Description:	Part and drawing number:
Pneumatic Chain Saw	5 1007 6000



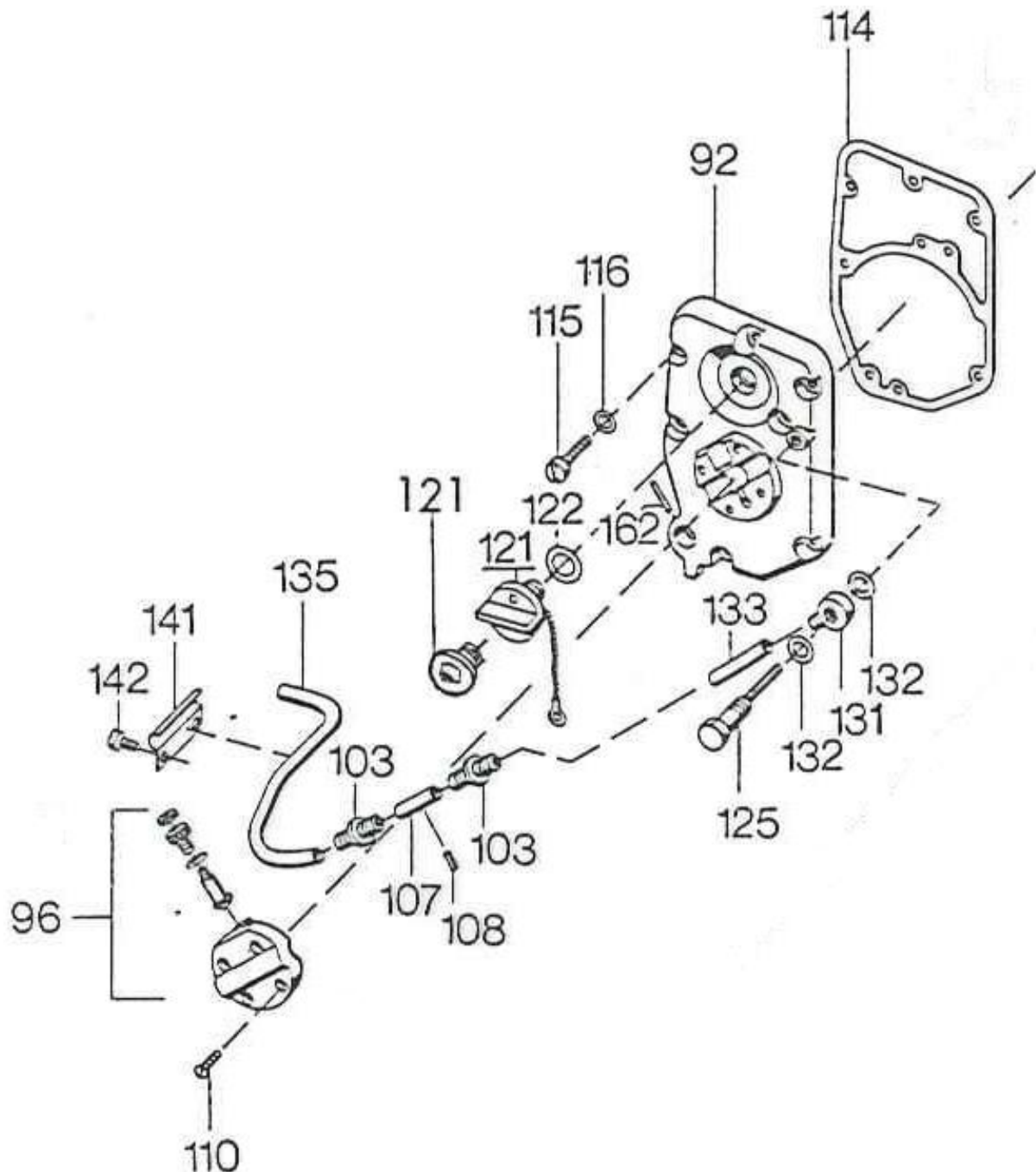
Spare Part List

Description:

Pneumatic Chain Saw

Part and drawing number:

5 1007 / 5 1008



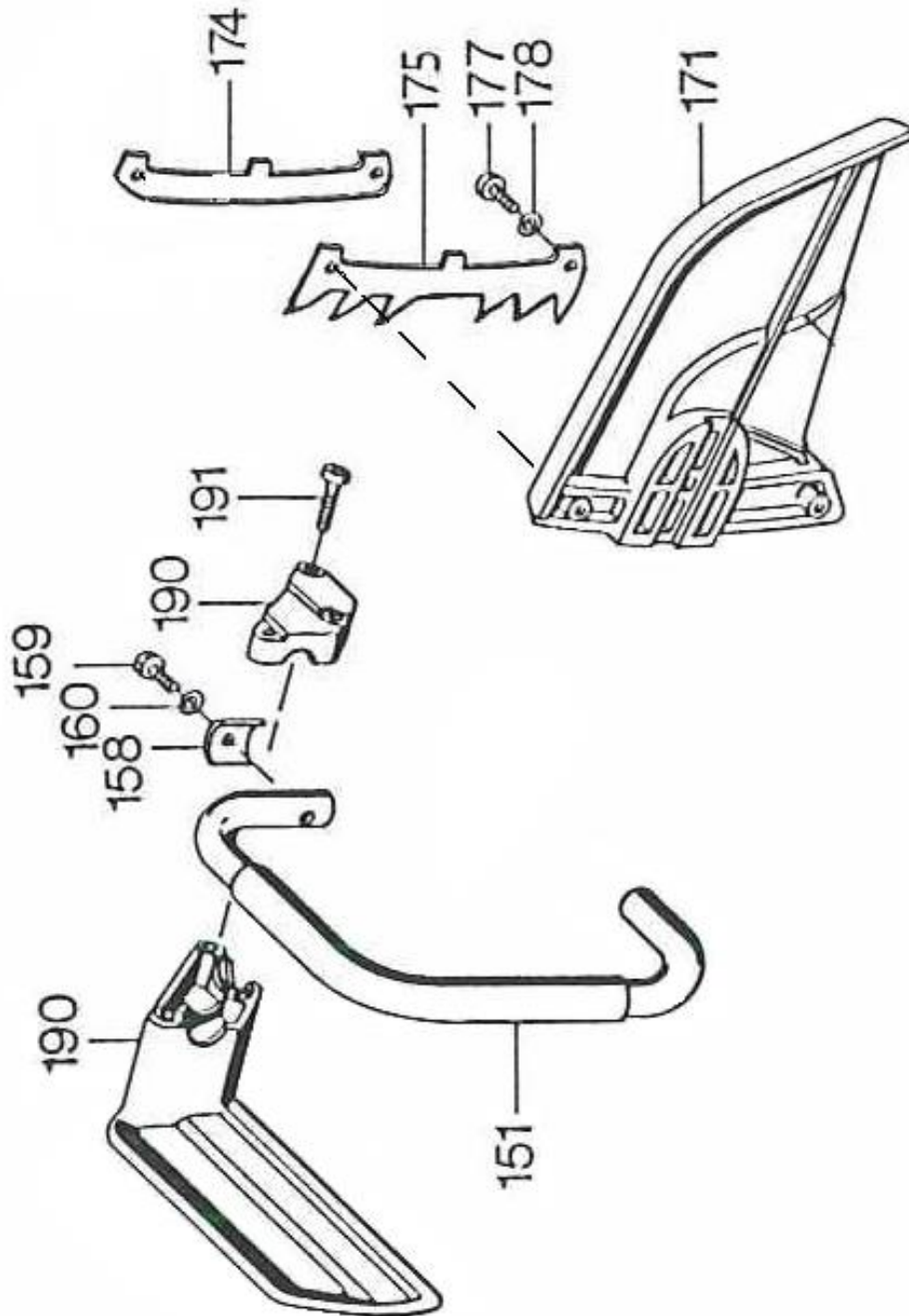
Spare Part List

Description:

Pneumatic Chain Saw

Part and drawing number:

5 1007 / 5 1008



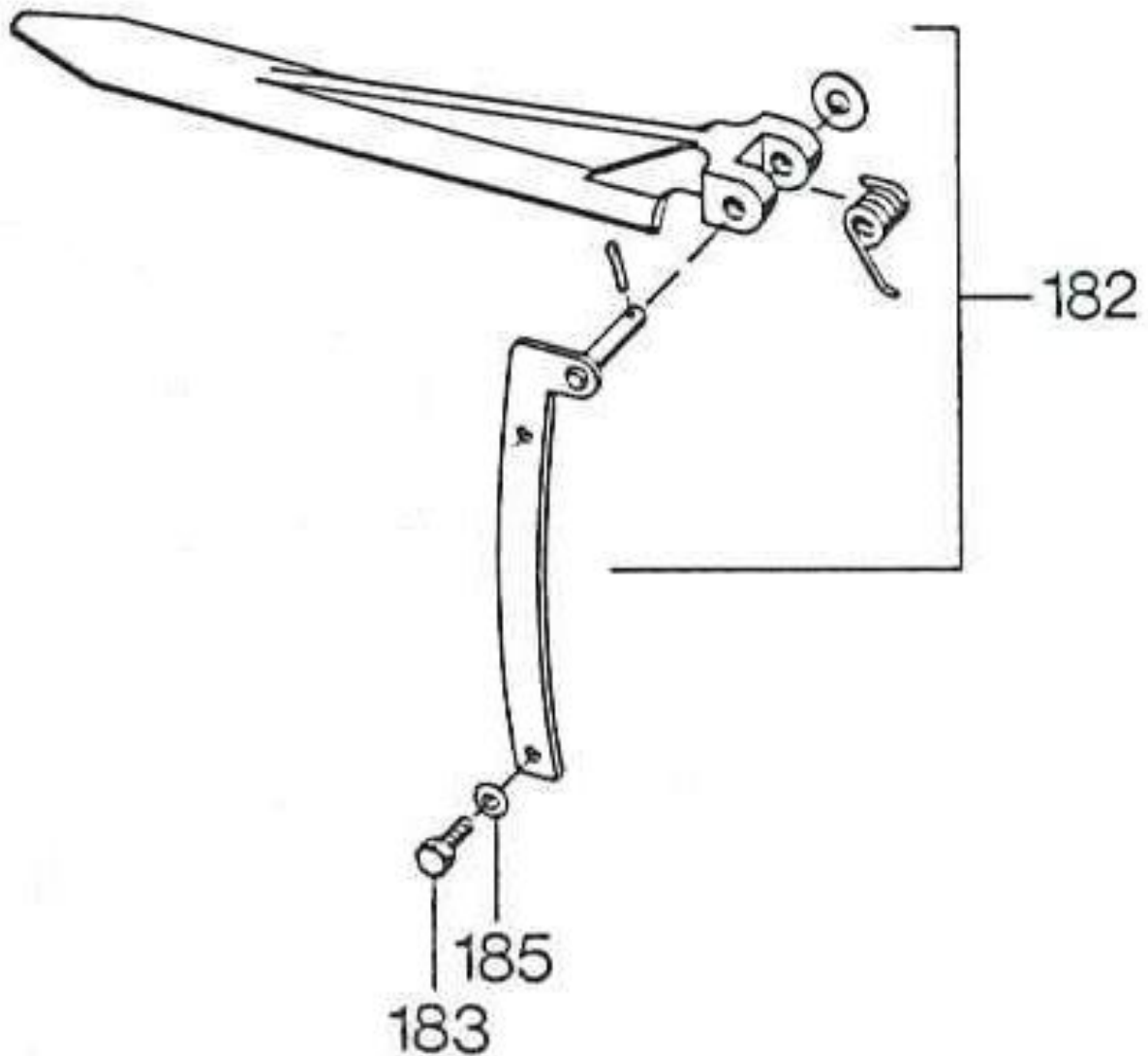
Spare Part List

Description:

Pneumatic Chain Saw

Part and drawing number:

5 1007 / 5 1008



Spare Part List	
Description:	Part and drawing number:
Pneumatic Chain Saw	5 1007 / 5 1008

