



Repair and Tuning up kit

Type 6 1061 001R_001T

for Pneumatic Drive Unit Type 6 1061 0010

ATEX Tool



Illustration can differ from the original

Repair Manual and Spare Parts List

Repair

Disassembly

Disassembly and re-assembly should be done according to the sectional drawing only.
 Observe the safety instructions of the operation and maintenance manual.

Disassembly of lever control valve with oiler:

Detach lever control valve with oiler item 4 from motor housing item 1. Screw out connection pieces item 22. Screw out nipple with screen item 217, and take out pressure spring item 215 and ball item 209. Remove rivet pin item 212, take off valve latch item 211 and pull valve pin item 210 out of the sealing seat. Loosen locking screws item 204 and 205. Screw out adjusting screw item 202 only if necessary.

Disassembly of output/ worm gear:

Screw off worm gear completely from planetary gear.

Loosen locking ring item 49, pull out ball bearing item 48 and worm item 47. Screw off bearing cover item 50 with needle sleeve item 44. Remove worm gear item 46 with needle sleeve.

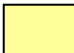
Press ball bearing item 43 and thrust ball bearing item 41 out of gear housing II item 40.


Disassembly of two-stage planetary gear:

Detach the complete planetary gear from the motor. Pull off coupling item 37. Press both planetary steps completely out of the gear housing I item 25, resp. loosen and pull it out by slight pushing of the front on a wooden pad. Press out ball bearing item 26. If necessary, continue disassembling the gear parts.

Disassembly of motor 3 6359 1000

Take intermediate plate item 17 with shaft sealing ring item 18 out of gear connection item 16 and screw gear connection out of motor housing item 1. Pull off exhaust ring item 19 and take out silencer mat item 20. Pull out complete inner parts like rotor item 8, vanes item 9, end plates item 3 and 10 with ball bearings item 4 and 11, spacer rings item 13 and 21 and cylinder bushing item 6. Take vanes out of the rotor slots. Pull the end plates and the spacer rings from the rotor pivot. If necessary, press the grooved ball bearings out of the end plates.

6 1061 001T = 

6 1061 001R =  + 

Begin with the re-assembly after checking, cleaning and replacing of worn or defective parts.

Re-assembly

The re-assembly is performed basically in the opposite order as the disassembly. Ensure that the motor is precisely aligned. The clearance between the rotor and the end plates should be 0.04 mm in the front and in the back (see figure 2). The chamfers in the spacer rings must point to the middle of the rotor. The cylinder bushing has to be correctly oriented before being inserted. The position of the lever valve can be determined with the help of the adjusting washers.

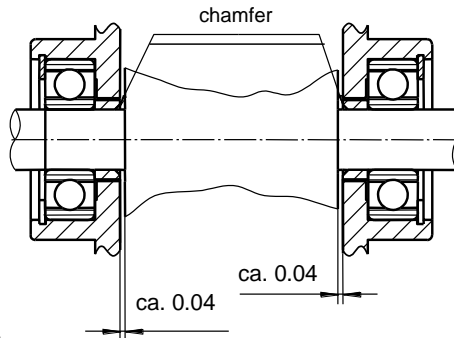
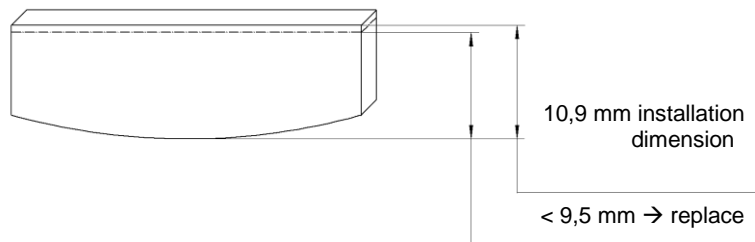


Fig. 2

Parts exposed to wear -especially the vanes- should be regularly changed. They are considered to be worn when the **width is less than 9.5 mm**.

Vane 1 1430 1050



We recommend refilling the grease in the planetary gear and in the worm gear after 300 hours of operation. Use only special gear grease. The roller bearings must be thoroughly cleaned and filled with new bearing grease after approximately 900 hours of operation. In order to avoid excessive heating of the bearing, the space between the inner and outer rings should only be filled with grease until about 1/3 full. The correct amount of grease is very important with respect to achieving good lubrication and minimal heating.

Grease (resin- and acid-free)	Multipurpose grease for roller and slide bearings and for gears	Special grease for worm gears
Designation according to DIN 51502	KL 2k	G 00 h
Consistency class DIN 51818	2	00
Saponification additive	lithium	sodium
Drop point	185° C	145° C
Worked penetration	265 – 295	400 – 410
Temperature range	-25° C to +125° C	-25° C to +100° C

Spare Parts

Only genuine Spitznas spare parts may be used. There is no warranty for damages and liability is disclaimed, if non-original spare parts and accessories are used.

<h3>Spare Part List</h3>					
Description: <div style="text-align: center;"><h4>Pneumatic Drive Unit</h4></div>				Part and drawing number: <div style="text-align: center;"><h4>6 1061 0010</h4></div>	
Item	Qty.	Description	Part and drawing no.		Remarks
1	1	Motor	3 6359 1000		
2	1	Gearbox, assy.	3 6339 4000		
3	1	Output unit, assy.	6 1021 7000		
4	1	Lever throttle with oiler	9 2007 0110		

Spare Part List

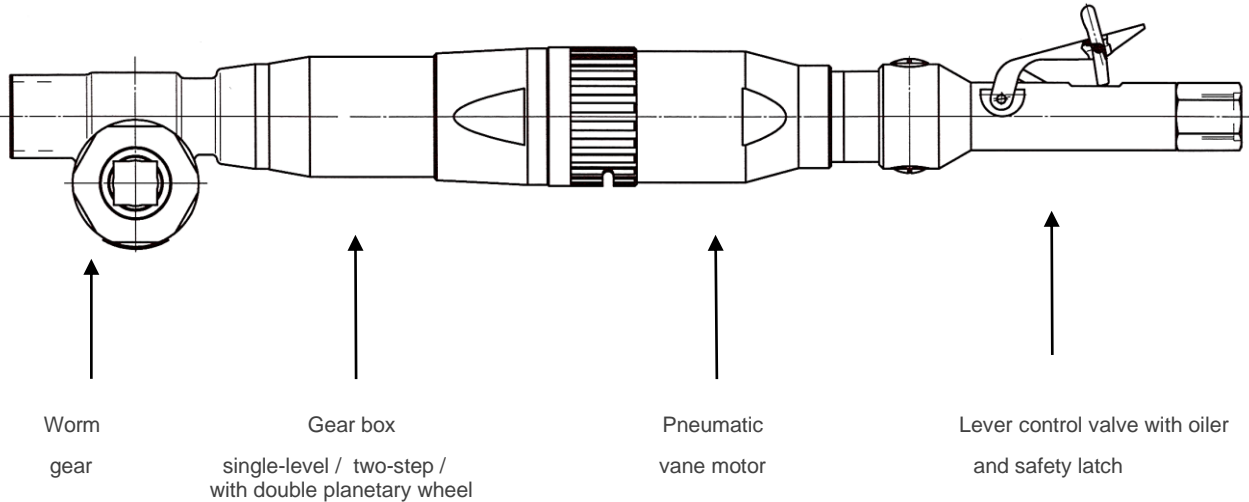
Description:

Pneumatic Drive Unit

Part and drawing number:

6 1061 0010

Drive unit : ASSEMBLY / ASSEMBLY GROUPS



Assembly groups :

3
OUTPUT UNIT

2
GEARBOX

1
MOTOR

4
LEVER CONTROL VALVE
WITH OILER

Spare Part List					
Description:				Part and drawing number:	
Pneumatic Motor				3 6359 1000	
Item	Qty.	Description	Part and drawing no.		Remarks
1	1	Motor housing	3 6359 1010		
3	1	End plate	3 6341 1110		
4	1	Grooved ball bearing	9 1001 0090		
5	1	Snap ring	9 1703 0050		
6	1	Cylinder bushing	1 1430 1020		
7	2	Spiral pin	9 1642 0080		
8	1	Rotor	3 6349 1030		
9	4	Vane	1 1430 1050		
10	1	End plate	5 1202 1100		
11	1	Grooved ball bearing	9 1003 0020		
12	1	Snap ring	9 1703 0070		
13	1	Spacer ring	5 1202 1080		
14	1	O-ring	9 1901 2070		
15	1	O-ring	9 1901 2430		
16	1	Gearbox connection	3 6339 1190		
17	1	Intermediate plate	3 6339 4140		
18	1	Shaft seal	9 1905 0030		
19	1	Exhaust ring	3 6339 1180		
20	1	Silencer mat	3 6339 1770		
21	1	Spacer ring	3 6341 1080		
22	1	Connection	3 6359 1230		
23	2	Adjusting washer (if needed)	9 3331 0170		
	2	Adjusting washer (if needed)	9 3331 0180		
	2	Adjusting washer (if needed)	9 3331 0190		

Repair and Tuning up kit
 Type 6 1061 001R_0010T
 for Pneumatic Drive Unit Type 6 1061 0010



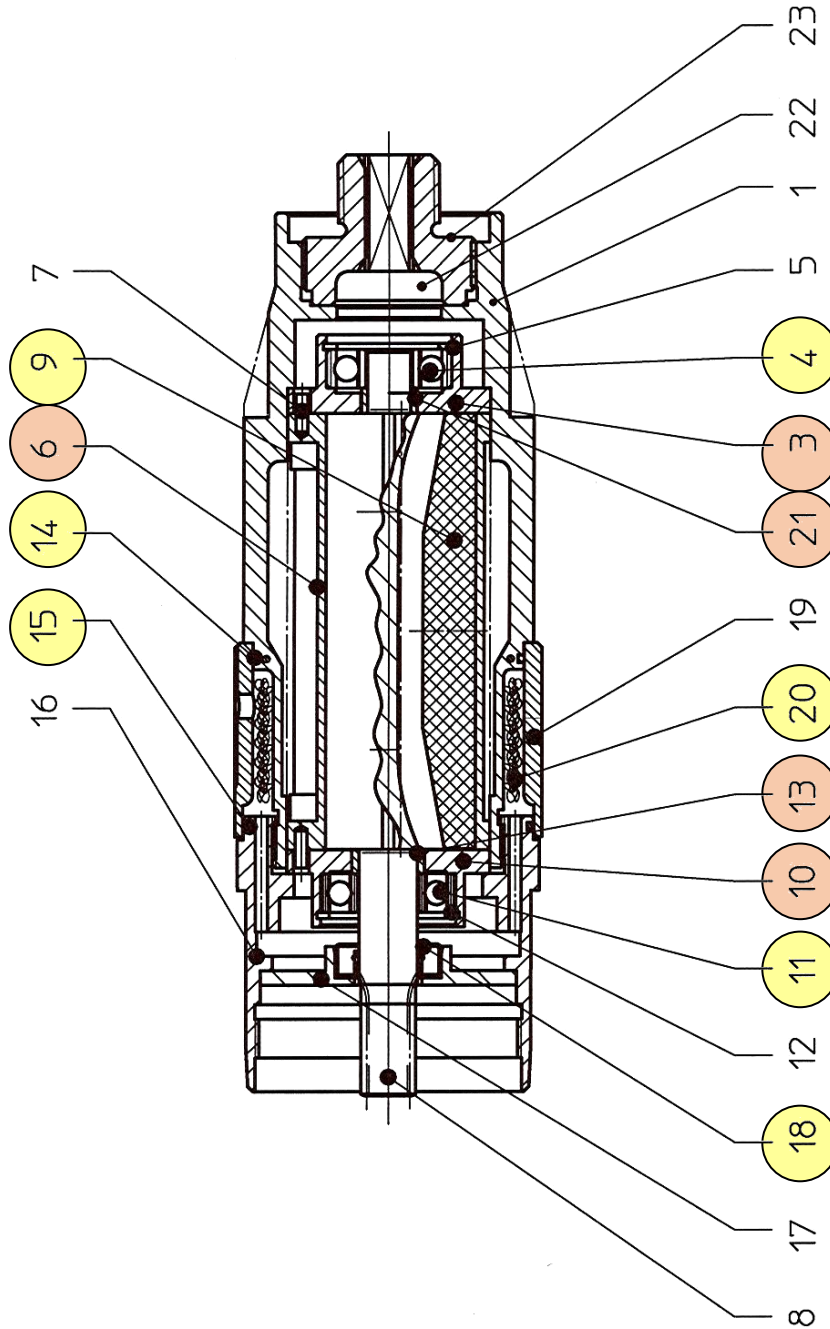
Spare Part List

Description:

Pneumatic Motor

Part and drawing number:

3 6359 1000



Spare Part List

Description: <h3 style="text-align: center; margin: 0;">Gearbox</h3>	Part and drawing number: <h3 style="text-align: center; margin: 0;">3 6339 4000</h3>
---	---

Item	Qty.	Description	Part and drawing no.		Remarks
25	1	Gear housing I	3 6339 4020		
26	1	Grooved ball bearing	9 1004 0020		
27	1	Planet carrier	3 6339 4030		
28	2	Planet wheel bolt	3 6339 4050		
29	4	Needle cage	9 1015 0390		
30	2	Planet wheel	3 6339 4040		
31	1	Bearing disc	3 6339 4060		
32	1	Grooved ball bearing	9 1004 0020		
33	1	Planet carrier	3 6339 4030		
34	2	Planet wheel bolt	3 6339 4050		
35	4	Needle cage	9 1015 0390		
36	2	Planet wheel	3 6339 4040		
37	1	Coupling	3 6339 4110		

Repair and Tuning up kit
Type 6 1061 001R_0010T
for Pneumatic Drive Unit Type 6 1061 0010



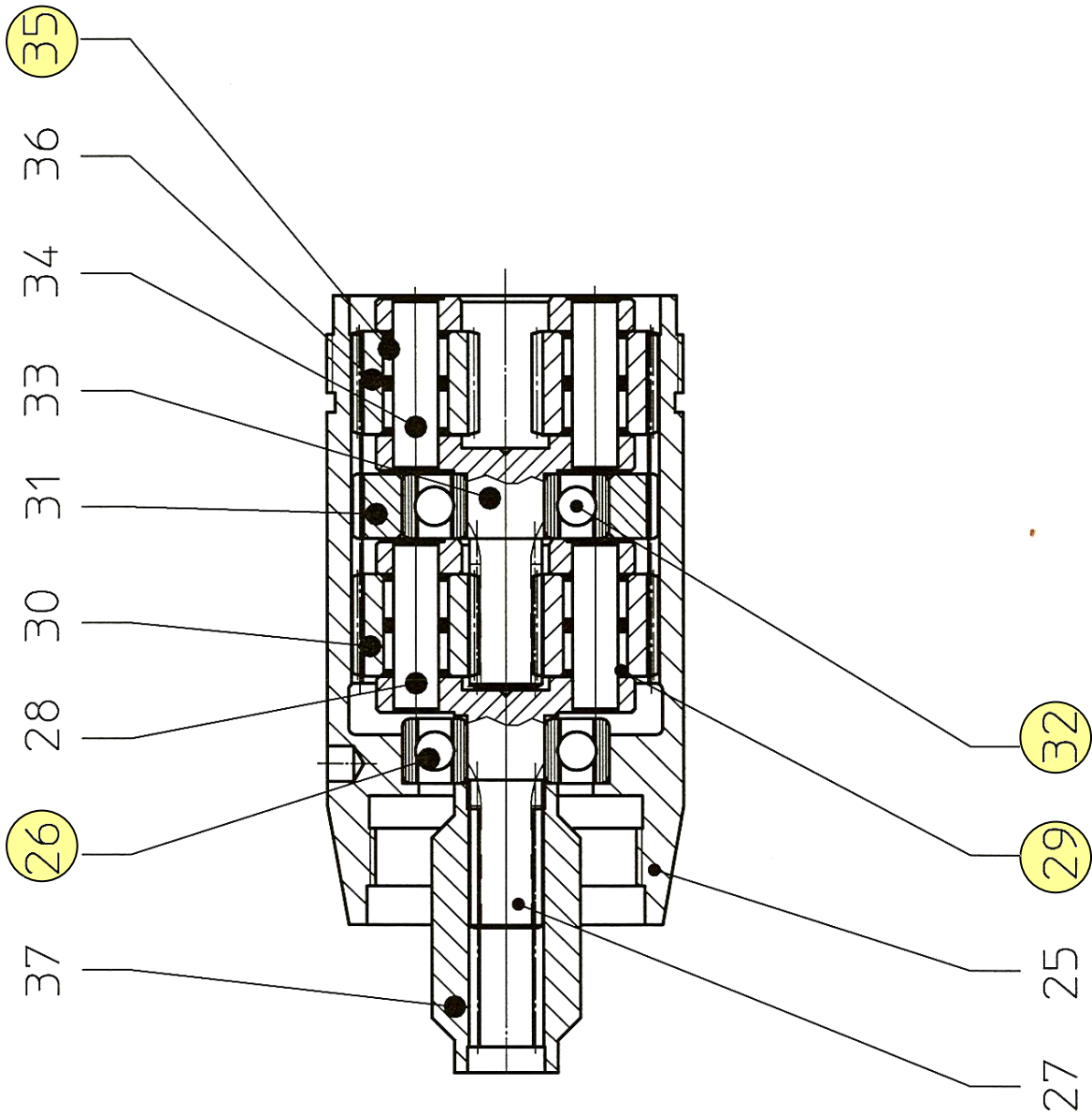
Spare Part List

Description:

Double Gearbox

Part and drawing number::

3 6339 4000



Spare Part List

Description:		Part and drawing number:		
Output Unit, assy.		6 1021 7000		
Item	Qty.	Description	Part and drawing no.	Remarks
40	1	Gear housing II	6 1017 4220	
41	1	Axial grooved ball bearing	9 1021 0020	
42	1	Compensating ring	9 3326 1220	
43	1	Grooved ball bearing	9 1003 0020	
44	2	Needle sleeve	9 1014 0200	
	1	Worm wheel set	3 6339 4940	Item 46+47
46	1	Worm wheel	3 6339 4130	
47	1	Worm	3 6339 4120	
48	1	Grooved ball bearing	9 1003 0020	
49	1	Locking ring	3 6339 4190	
50	1	Bearing cover	3 6339 4160	
	1	Adjusting washer (if needed)	9 3331 0430	
	1	Adjusting washer (if needed)	9 3331 0440	
		Use for repair and parts assembly:		
		Grease Lithium saponified Renolith H 442 NLGI- Class 2	9 9902 0110	

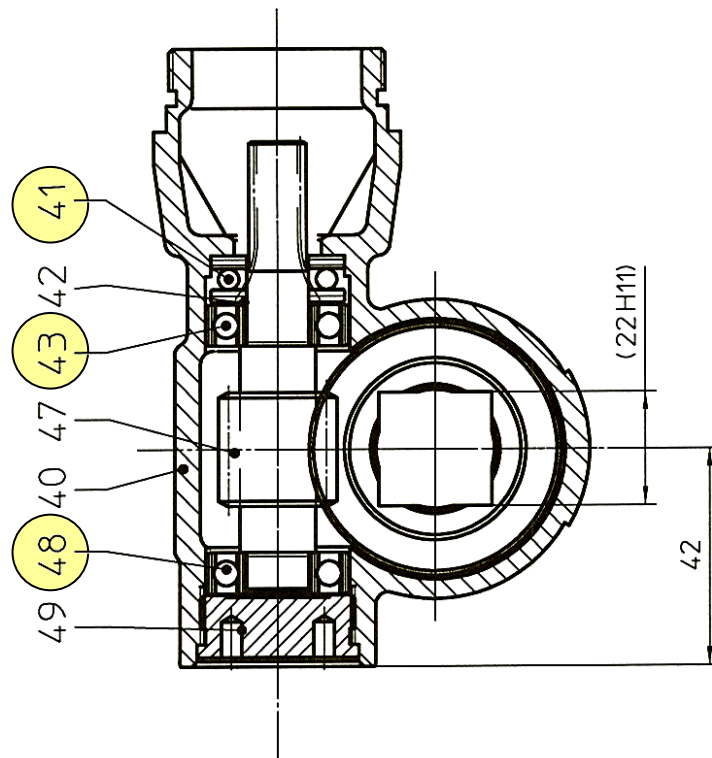
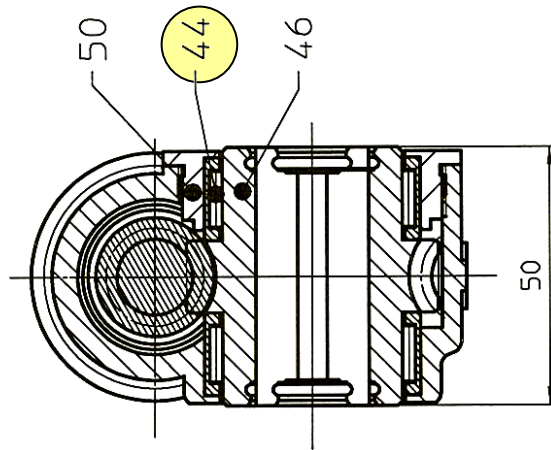
Spare Part List

Description:

Output Unit, assy.

Part and drawing number.

6 1021 7000



Repair and Tuning up kit
 Type 6 1061 001R_0010T
 for Pneumatic Drive Unit Type 6 1061 0010



Spare Part List					
Description:				Part and drawing number:	
Lever Throttle with oiler and latch				9 2007 0110	
Item	Qty.	Description	Part and drawing no.		Remarks
201	1	Valve housing, assy.	1 1480 3910		with item 202
202	1	Adjusting screw	9 1151 9010		
203	1	Gasket	9 1903 0260		
204	1	Locking screw	9 1150 9070		
205	1	Gasket	9 1903 0340		
206	1	Locking screw	9 1150 9030		
209	1	Plastic ball	9 1018 0150		
210	1	Valve pin	9 1637 2120		
211	1	Valve lever, assy.	1 5060 3930		
212	1	Grooved pin	9 1627 0180		
213	2	Washer	9 3302 0150		
215	1	Pressure spring	9 1803 0240		
216	1	O-ring	9 1901 3230		
217	1	Nipple, assy.	9 2205 1220		

Repair and Tuning up kit
 Type 6 1061 001R_0010T
 for Pneumatic Drive Unit Type 6 1061 0010

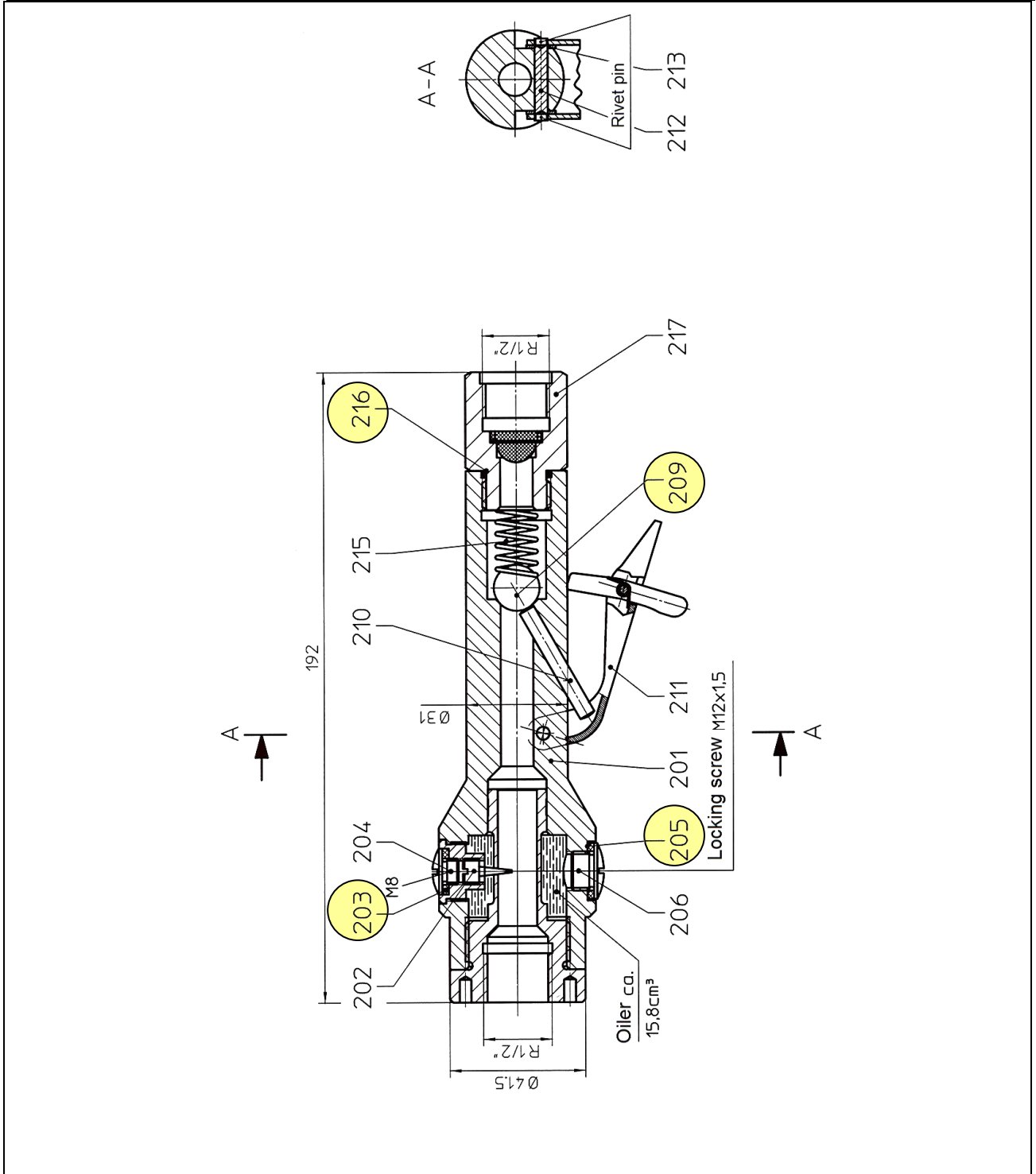
Spare Part List

Description:

Lever Throttle with oiler and latch

Part and drawing number:

9 2007 0110



Repair and Tuning up kit
Type 6 1061 001R_0010T
for Pneumatic Drive Unit Type 6 1061 0010



Note:

Repair and Tuning up kit
Type 6 1061 001R_0010T
for Pneumatic Drive Unit Type 6 1061 0010



Sketch:



SPITZNAS
CUSTOMIZED POWER SOLUTIONS

22 Harbor Ave, Norwalk CT,
06850, USA
4330 Center St, Deer Park,
TX 77536, USA

P: 203-853-9522 | TF: 800-700-5919
Fax: 203-853-9921
E-Mail: info@csunitec.com
www.csunitec.com

High-Performance
Power Tools
& Accessories