

## **Pneumatic Service Unit**

**Type 9 2406 0600**  
**9 2406 0630**  
**9 2406 0640**  
**9 2406 0650**



Illustration can differ from the original

## **Installation and Operation Manual**



## **Technical Specification**

## **Operation Instructions**

## **Spare Part Documentation**

Parts lists and sectional drawings, resp. exploded views

## TECHNICAL SPECIFICATION

|             | ID of Hose | Connection | Flow rate (l/min) |
|-------------|------------|------------|-------------------|
| 9 2406 0600 | 10 (G3/8") | Rd 32x1/8" | 1100              |
| 9 2406 0630 | 10 (G3/8") | R1/2"      | 1100              |
| 9 2406 0640 | 20 (G3/4") | Rd 32x1/8" | 3500              |
| 9 2406 0650 | 20 (G3/4") | R3/4"      | 3500              |

## OPERATION INSTRUCTIONS

### Pneumatic service units,

normally consisting of filter regulator and fog lubricator, are intended for cleaning compressed air for workshop purposes from liquid and solid contamination, for pressure regulation and for providing a fine oil spray for the lubrication for cylinders, valves, pneumatic tools etc. When used correctly and in accordance with the respective operating condition, they maintain the performance level of pneumatic plant and increase its service life.

### Fitting

Sequence (in direction of arrow) in normal cases: Filter regulator-fog lubricator; the distance between the pneumatic service unit and the consumer point should be as short as possible. The units must be mounted vertically.

### Filter regulator

#### Filter

Compressed air contains water condensate scale, rust particles etc., which attack pneumatically controlled and actuated tools such as pneumatic cylinders, valves, etc. and which thus have disturbing effect on their function. For this reason the purification of compressed air is an indispensable necessity and is undertaken with the aid of filters. The filtering effect is dependend on the pore diameter (normally 40  $\mu$ ) of the sintered filter.

### Servicing

Drain off the water condensate at regular intervals and clean the sintered filter, if it is dirty.

### Removal

Unscrew the bowl. Undo the twist plate form the sintered filter; take out the sintered filter. Place the sintered filter in a solvent (e.g. Petrol, ticho, etc.), agitate well and dry. Replace the filter. Ensure that the seal is perfectly seated. For cleaning of the plastic bowl, see the next page.

### Pressure regulator

System pressure in a compressed air installation fluctuates according to the size of the compressor (e.g. 6-10 or 10-16 bar, etc.). Pressure regulators reduce this fluctuating system pressure (upstream pressure) to the desired working pressure (downstream pressure) and maintain it constant.

Pressure regulators with reverse control are used for pneumatic service units. Pressure regulators with reverse control offer the advantage that the downstream pressure can be reduced, without bleeding off air, by turning back the regulating screw. In addition, the blow-backs which occur in pneumatic controls are vented to atmosphere by the reverse control (which at the same time can also be regarded as a safety valve) thus protecting the pressure gauge.

### Pressure setting

Pull the adjusting knob, or release the lock nut (regulator unlocked) then, by tuning the knob, adjust the pressure regulator to the desired pressure, finally press the adjusting knob, or set the lock nut (regulator locked) down to fix the unit set at the desired pressure.

### Fog lubricator

The compressed air is enriched with a fine oil mist by the fog lubricator so that in this state it thus effects continuous and reliable lubrication of the pneumatically controlled compressed air tools, cylinders, valves, etc.

Please note: Minimum operating pressure is 0.5 bar

### Dosage

Set the amount of oil (drops per minute) on the control screw as required during operation. The number of drops can be seen in the sight-glass.

### Oil filling

Remove the oil filler screw. Fill the bowl to the upper mark (approx. 2/3 full). Firmly replace the filler screw. It is possible to replenish the oil during operation; the air supply needs to be shut off.

Max. operating pressure and operating temperature for filter pressure regulator and fog lubricator:

|   | Max. operating pressure | Operating temperature |
|---|-------------------------|-----------------------|
| Plastic bowl, with or without protective cage | 16 bar                  | 0 bis + 50C           |
| Metal case                                    | 25 bar                  | 0 bis + 60°C          |

Plastic bowls may only be cleaned using water, petroleum or spirit.

Please note: Petrol supplied for use in internal combustion engines is not cleaning spirit.

Benzine, benzole, acetone, cleaning fluids containing tricho, or similar are under no circumstances permitted for use as cleaning agent for the bowl. The filling oil may not be thinned or blended with any fluid that contains emollients such as alcohol, "Glystantin" (antifreeze) etc.

No responsibility can be accepted for damage which may result from non-observance of these instructions.

### Spare Part List

|   |  |
|---|--|
| Description:<br><br><b>Pneumatic Service Unit</b> | Part and drawing number:<br><b>9 2406 0600</b> |
|---|--|

| Item | Qty. | Description                                   | Part and drawing no. | Remarks |
|------|------|---|----------------------|---------|
| 1    | 1    | Box top                                       | 9 2406 0610          |         |
| 1.1  | 1    | Fire brigade snap hook                        | 9 4510 0040          |         |
| 2    | 1    | Box bottom                                    | 9 2406 0620          |         |
| 3    | 1    | Maintenance unit with pressure control G 3/8" | 9 2406 0360          |         |
| 4    | 1    | Screwed-on hinge                              | 9 3915 0030          |         |
| 5    | 4    | Hexagonal nut                                 | 9 1210 0120          |         |
| 6    | 1    | Sign directional arrow                        | 9 3106 0030          |         |
| 7    | 2    | Nipple for mining                             | 9 2201 0230          |         |
| 9    | 4    | Washer  | 9 3302 0280          |         |
|      |      |   |                      |         |
|      |      |   |                      |         |
|      |      |   |                      |         |
|      |      |   |                      |         |
|      |      |   |                      |         |
|      |      |   |                      |         |
|      |      |   |                      |         |
|      |      |   |                      |         |
|      |      |   |                      |         |
|      |      |   |                      |         |
|      |      |   |                      |         |
|      |      |   |                      |         |
|      |      |   |                      |         |
|      |      |   |                      |         |
|      |      |   |                      |         |
|      |      |   |                      |         |
|      |      |   |                      |         |
|      |      |   |                      |         |
|      |      |   |                      |         |
|      |      |   |                      |         |
|      |      |   |                      |         |
|      |      |   |                      |         |
|      |      |   |                      |         |
|      |      |   |                      |         |
|      |      |   |                      |         |
|      |      |   |                      |         |
|      |      |   |                      |         |
|      |      |   |                      |         |
|      |      |   |                      |         |
|      |      |   |                      |         |
|      |      |   |                      |         |
|      |      |   |                      |         |
|      |      |   |                      |         |
|      |      |   |                      |         |
|      |      |   |                      |         |
|      |      |   |                      |         |
|      |      |   |                      |         |

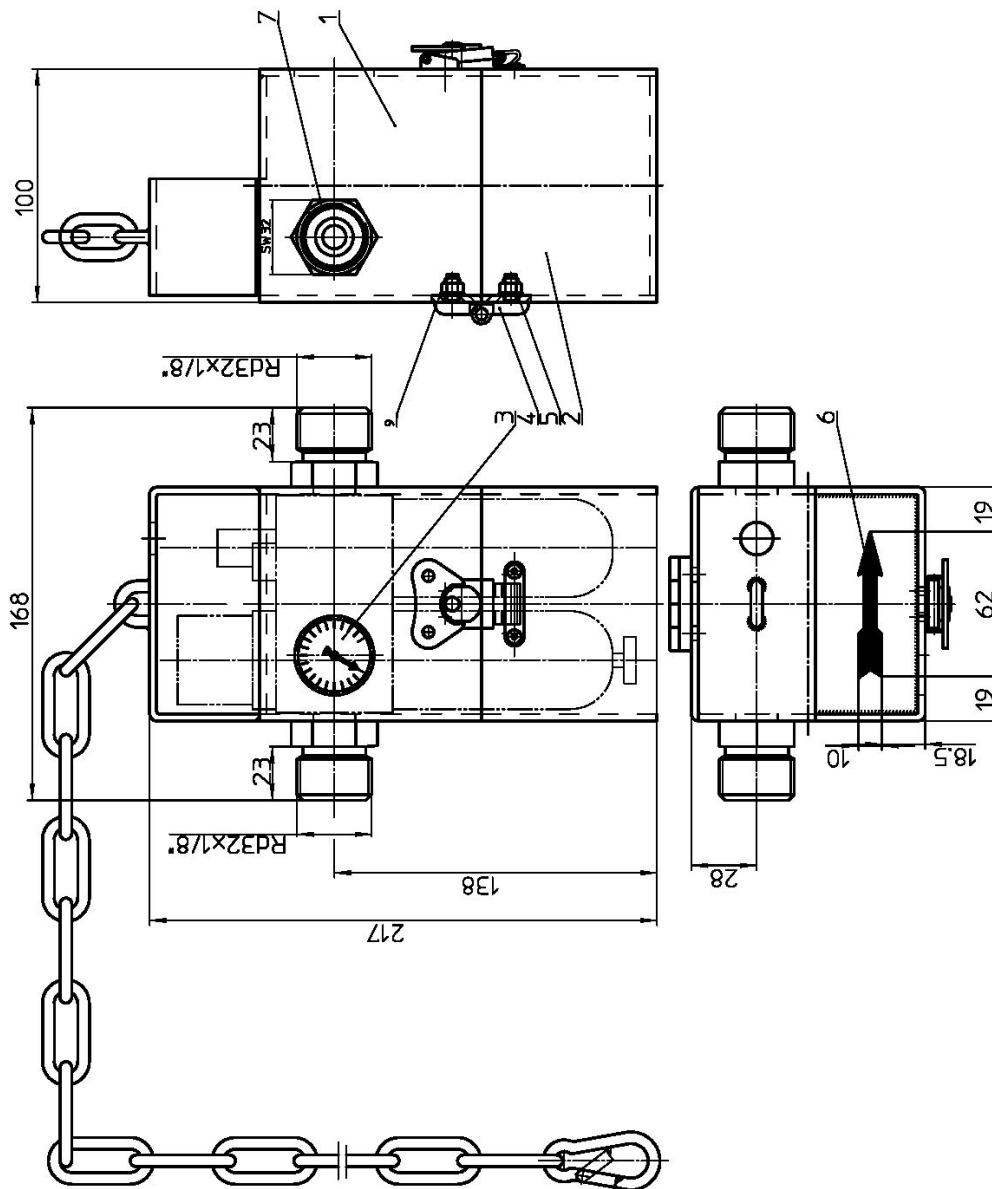
### Spare Part List

Description:

**Pneumatic Service Unit**

Part and drawing number.

**9 2406 0600**



## Spare Part List

Description:

**Pneumatic Service Unit**

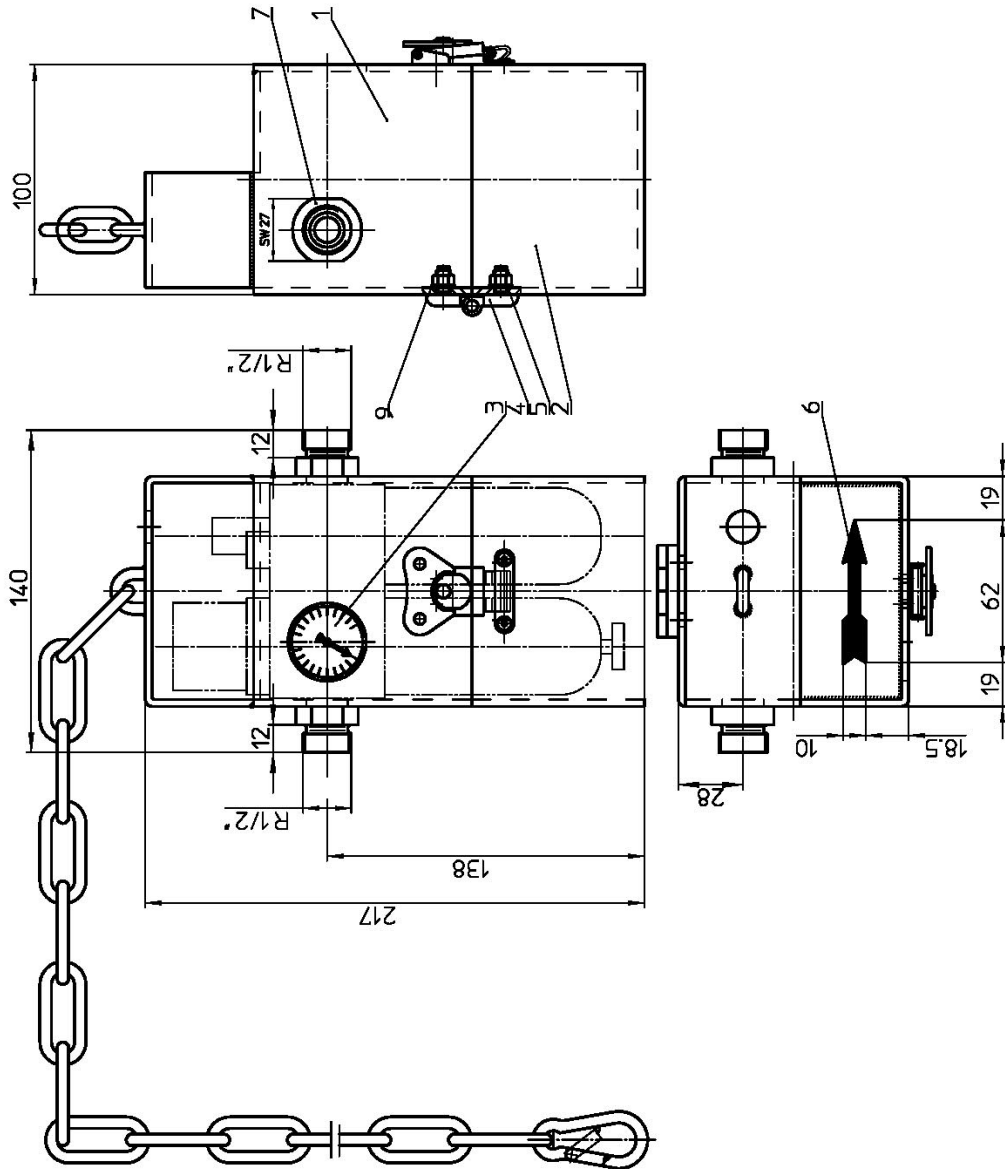
Part and drawing number:

**9 2406 0630**

| Item | Qty. | Description                                   | Part and drawing no. |  | Remarks |
|------|------|---|----------------------|--|---------|
| 1    | 1    | Box top                                       | 9 2406 0610          |  |         |
| 1.1  | 1    | Fire brigade snap hook                        | 9 4510 0040          |  |         |
| 2    | 1    | Box bottom                                    | 9 2406 0620          |  |         |
| 3    | 1    | Maintenance unit with pressure control G 3/8" | 9 2406 0360          |  |         |
| 4    | 1    | Screwed-on hinge                              | 9 3915 0030          |  |         |
| 5    | 4    | Hexagonal nut                                 | 9 1210 0120          |  |         |
| 6    | 1    | Sign directional arrow                        | 9 3106 0030          |  |         |
| 7    | 2    | Nipple  | 9 2205 1190          |  |         |
| 9    | 4    | Washer  | 9 3302 0280          |  |         |
|      |      |   |                      |  |         |
|      |      |   |                      |  |         |
|      |      |   |                      |  |         |
|      |      |   |                      |  |         |
|      |      |   |                      |  |         |
|      |      |   |                      |  |         |
|      |      |   |                      |  |         |
|      |      |   |                      |  |         |
|      |      |   |                      |  |         |
|      |      |   |                      |  |         |
|      |      |   |                      |  |         |
|      |      |   |                      |  |         |
|      |      |   |                      |  |         |
|      |      |   |                      |  |         |
|      |      |   |                      |  |         |
|      |      |   |                      |  |         |
|      |      |   |                      |  |         |
|      |      |   |                      |  |         |
|      |      |   |                      |  |         |
|      |      |   |                      |  |         |
|      |      |   |                      |  |         |
|      |      |   |                      |  |         |
|      |      |   |                      |  |         |
|      |      |   |                      |  |         |
|      |      |   |                      |  |         |
|      |      |   |                      |  |         |
|      |      |   |                      |  |         |
|      |      |   |                      |  |         |
|      |      |   |                      |  |         |
|      |      |   |                      |  |         |
|      |      |   |                      |  |         |
|      |      |   |                      |  |         |
|      |      |   |                      |  |         |
|      |      |   |                      |  |         |
|      |      |   |                      |  |         |
|      |      |   |                      |  |         |
|      |      |   |                      |  |         |
|      |      |   |                      |  |         |
|      |      |   |                      |  |         |
|      |      |   |                      |  |         |
|      |      |   |                      |  |         |

## Spare Part List

|                               |                          |
|-------------------------------|--------------------------|
| Description:                  | Part and drawing number. |
| <b>Pneumatic Service Unit</b> | <b>9 2406 0630</b>       |
|                               |                          |





## Spare Part List

| Spare Part List               |      |   |                          |         |
|-------------------------------|------|---|--------------------------|---------|
| Description:                  |      |   | Part and drawing number: |         |
| <b>Pneumatic Service Unit</b> |      |   | <b>9 2406 0640</b>       |         |
| Item                          | Qty. | Description                                   | Part and drawing no.     | Remarks |
| 1                             | 1    | Box top                                       | 9 2406 0641              |         |
| 1.1                           | 1    | Fire brigade snap hook                        | 9 4510 0040              |         |
| 2                             | 1    | Box bottom                                    | 9 2406 0646              |         |
| 3                             | 1    | Maintenance unit with pressure control G 3/4" | 9 2406 0370              |         |
| 4                             | 1    | Screwed-on hinge                              | 9 3915 0030              |         |
| 5                             | 4    | Hexagonal nut                                 | 9 1210 0120              |         |
| 6                             | 1    | Sign directional arrow                        | 9 3106 0030              |         |
| 7                             | 2    | Nipple  | 9 2201 0180              |         |
| 9                             | 4    | Washer  | 9 3302 0280              |         |
|                               |      |   |                          |         |
|                               |      |   |                          |         |
|                               |      |   |                          |         |
|                               |      |   |                          |         |
|                               |      |   |                          |         |
|                               |      |   |                          |         |
|                               |      |   |                          |         |
|                               |      |   |                          |         |
|                               |      |   |                          |         |
|                               |      |   |                          |         |
|                               |      |   |                          |         |
|                               |      |   |                          |         |
|                               |      |   |                          |         |
|                               |      |   |                          |         |
|                               |      |   |                          |         |
|                               |      |   |                          |         |
|                               |      |   |                          |         |
|                               |      |   |                          |         |
|                               |      |   |                          |         |
|                               |      |   |                          |         |
|                               |      |   |                          |         |
|                               |      |   |                          |         |
|                               |      |   |                          |         |
|                               |      |   |                          |         |
|                               |      |   |                          |         |
|                               |      |   |                          |         |
|                               |      |   |                          |         |
|                               |      |   |                          |         |
|                               |      |   |                          |         |
|                               |      |   |                          |         |
|                               |      |   |                          |         |
|                               |      |   |                          |         |
|                               |      |   |                          |         |

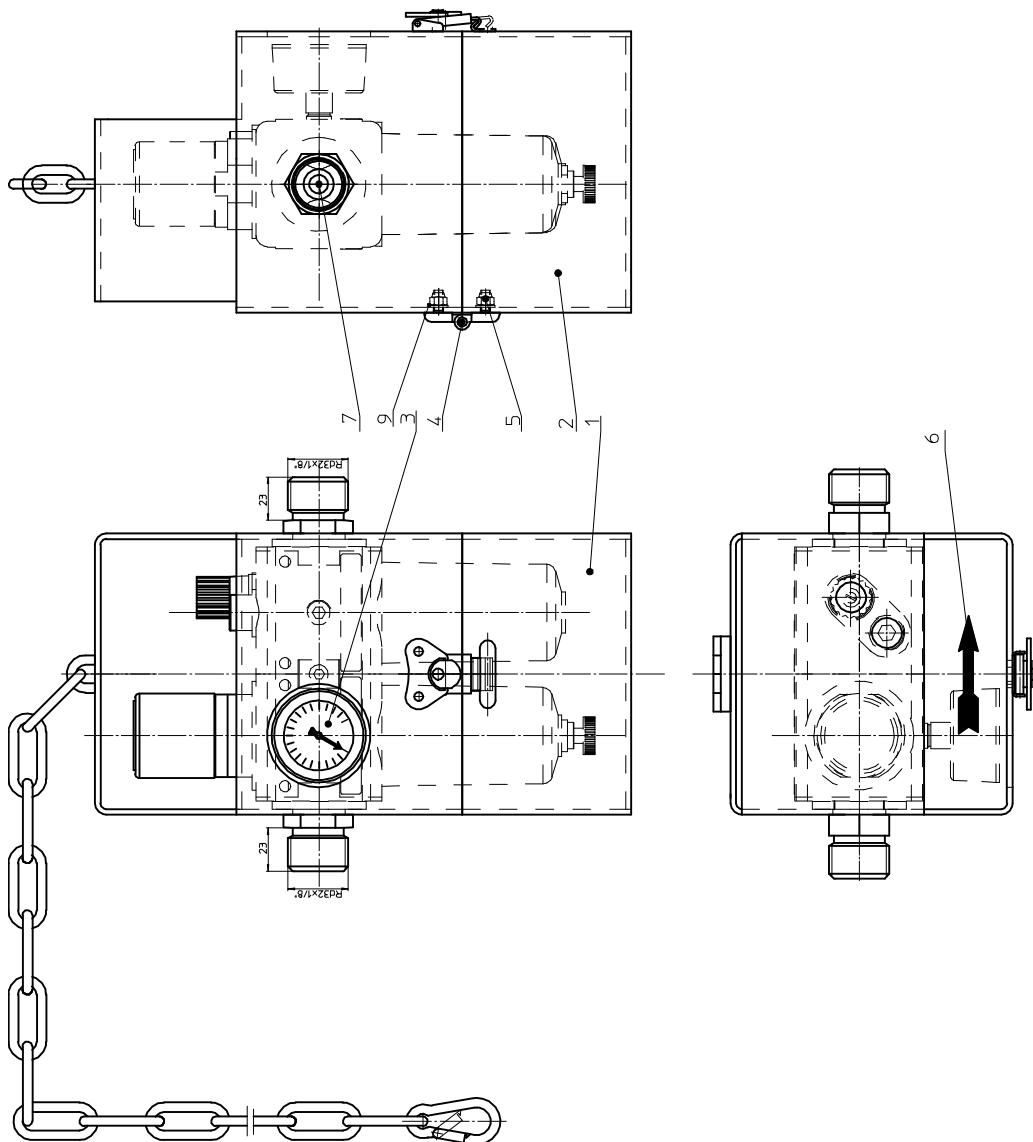
## Spare Part List

Description:

**Pneumatic Service Unit**

Part and drawing number.

**9 2406 0640**



**Spare Part List**

|   |  |  |  |  |  |
|---|--|--|--|--|--|
| Description:<br><b>Pneumatic Service Unit</b> |  |  | Part and drawing number:<br><b>9 2406 0650</b> |  |  |
|---|--|--|--|--|--|

| Item | Qty. | Description                                   | Part and drawing no. |  | Remarks |
|------|------|---|----------------------|--|---------|
| 1    | 1    | Box top                                       | 9 2406 0641          |  |         |
| 1.1  | 1    | Fire brigade snap hook                        | 9 4510 0040          |  |         |
| 2    | 1    | Box bottom                                    | 9 2406 0646          |  |         |
| 3    | 1    | Maintenance unit with pressure control G 3/4" | 9 2406 0370          |  |         |
| 4    | 1    | Screwed-on hinge                              | 9 3915 0030          |  |         |
| 5    | 4    | Hexagonal nut                                 | 9 1210 0120          |  |         |
| 6    | 1    | Sign directional arrow                        | 9 3106 0030          |  |         |
| 7    | 2    | Nipple  | 7 3412 6250          |  |         |
| 9    | 4    | Washer  | 9 3302 0280          |  |         |
|      |      |   |                      |  |         |
|      |      |   |                      |  |         |
|      |      |   |                      |  |         |
|      |      |   |                      |  |         |
|      |      |   |                      |  |         |
|      |      |   |                      |  |         |
|      |      |   |                      |  |         |
|      |      |   |                      |  |         |
|      |      |   |                      |  |         |
|      |      |   |                      |  |         |
|      |      |   |                      |  |         |
|      |      |   |                      |  |         |
|      |      |   |                      |  |         |
|      |      |   |                      |  |         |
|      |      |   |                      |  |         |
|      |      |   |                      |  |         |
|      |      |   |                      |  |         |
|      |      |   |                      |  |         |
|      |      |   |                      |  |         |
|      |      |   |                      |  |         |
|      |      |   |                      |  |         |
|      |      |   |                      |  |         |
|      |      |   |                      |  |         |
|      |      |   |                      |  |         |
|      |      |   |                      |  |         |
|      |      |   |                      |  |         |

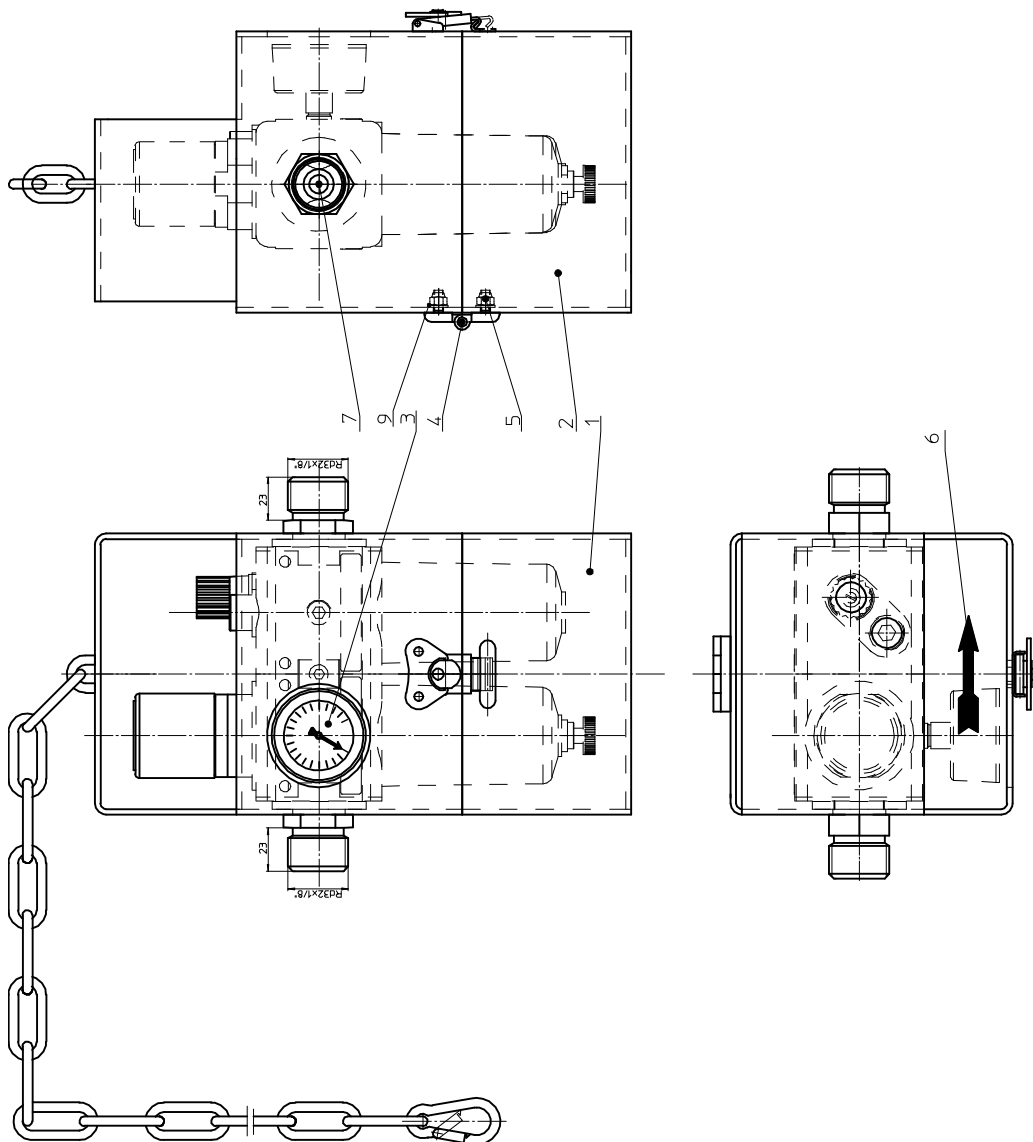
## Spare Part List

Description:

**Pneumatic Service Unit**

Part and drawing number.

**9 2406 0650**





22 Harbor Ave, Norwalk, CT 06850 USA

**Toll-free:** 1-800-700-5919 (USA & Canada)  
**Phone:** 203-853-9522 (outside USA & Canada)  
Fax: 203-853-9921  
**E-Mail:** [info@csunitec.com](mailto:info@csunitec.com) Internet:  
[www.csunitec.com](http://www.csunitec.com)