

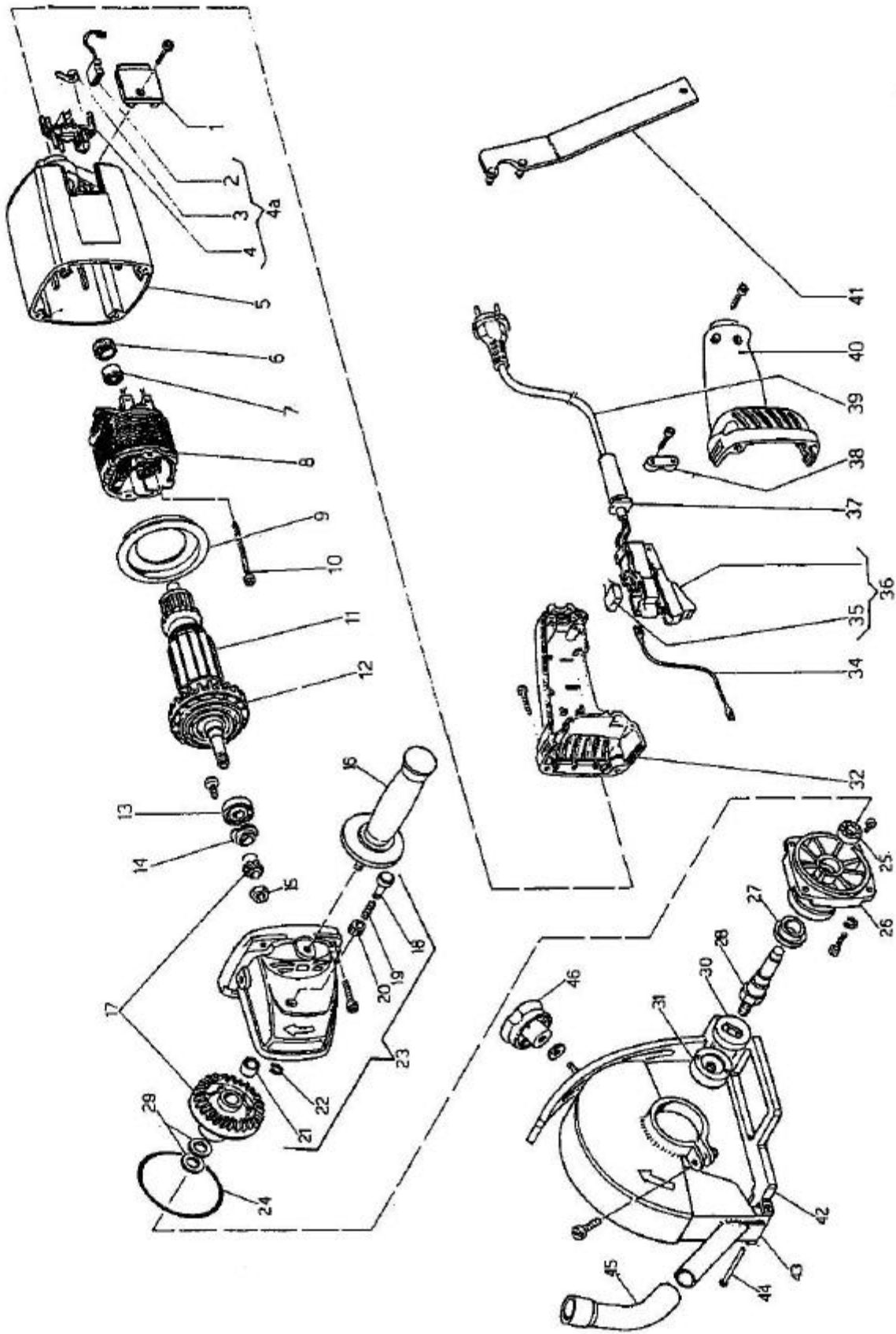
A 20/4 - CUT OFF SAW

CS UNITEC, INC.

22 Harbor Avenue
Norwalk, CT 06850

Website: www.csunitec.com

Email: info@csunitec.com



Not responsible for typographical errors.

POS. NO.	ITEM NO.	DESCRIPTION
24a	5211 443 119	Seal
4a	5255 387 043	Brush Holder Complete
1	6537 214 204	Brush Cap
2	5410 316 047	Carbon Brush
3	5255 447 162	Spring
4	6537 387 034	Carbon Brush Holder
5	6537 211 235	Motor Housing
6	0000 481 068	Bearing Protection
7	0000 483 104	Bearing D=9x25x8
8	5261 121 097	Field
9	6537 246 447	Baffle
10	0000 617 103	Screw D5x90
11	5261 111 110	Armature
12	5410 286 074	Fan
13	0000 483 021	Bearing D=12x32x10
14	5255 243 646	Ring
15	0000 631 034	Nut
16	5201 216 005	Side Handle
17	5261 422 058	Gear
18	5255 234 312	Locking Ring Gear Pin
19	5169 447 112	Spring
20	5255 481 070	Bush D8, 1x14, 1x10
21	0000 484 016	Roller Bearing
22	0000 661 024	Stop Ring
23	5261 212 118	Head
24	5211 443 118	Seal
25	0000 483 030	Bearing D=15x35x11
26	5255 246 460	Shaft Holder Flange
27	5255 243 645	Dust Protection Ring
28	5259 275 207	Spindle
29	0000 651 026	Shim
30	5259 446 180	Clamping Plate
31	5259 432 039	Clamping Nut
32	5255 216 163	Handl, Right Half
34	5261 182 299	Wire
35	5255 323 056	Capacitor
36	5255 311 217	Switch Complete
37	5301 235 003	Pipe Union
38	1101 235 047	Cable Holder
39	5261 381 087	Cord
40	5255 216 164	Handle, Left Half
41	5231 437 025.01	Wrench for A 20/4
42	5913 417 160	Base, Complete

CS Unitec, Inc.

22 Harbor Ave, Norwalk, CT 06850

Telephone: 203-853-9522 Toll Free: 800-700-5919 Fax: 203-853-9921

WebSite: www.csunitec.com E-Mail: info@csunitec.com

Not responsible for typographical errors.

<u>POS. NO.</u>	<u>ITEM NO.</u>	<u>DESCRIPTION</u>
43	5913 414 221	Guard
44	5327 434 020	Pin
45	5913 435 168	Dust Port
46	5261 457 115	Knob for A 20/4

CS Unitec, Inc.

22 Harbor Ave, Norwalk, CT 06850

Telephone: 203-853-9522 Toll Free: 800-700-5919 Fax: 203-853-9921

WebSite: www.csunitec.com E-Mail: info@csunitec.com