

Air Driven Axial Fan

8 1521 0300 - 8 1824 0300



Typical Illustration

Operating and Maintenance Instruction

CONTENTS

- 1. Safety**
- 2. Description**
- 3. Conditions of Use**
- 4. Storage**
- 5. Installation**
- 6. Operation**
- 7. Maintenance**

1. Safety

The following symbols refer to particular dangers or provide advice for safe operation.



Attention! Danger! Safety advice!



Important information



Spitznas axial fans must be fitted to machines, ventilation devices and systems. It is recommended to use protective grills or other devices for safety reasons, depending on working conditions.



Spitznas axial fans are manufactured in accordance with the highest technical standards. Our quality assurance programme (DIN EN ISO 9001:2000) includes material and functional tests to ensure the final product is durable and of high quality.

Before installing and operating the fan read these instructions carefully!

Only use the fan after it has been securely mounted and fitted with protection against contact to suit the application. Remove protective grills only for cleaning and remember to re-fit them before use.

Before working on the fan always disconnect the air hose.

Earth the fan against static electricity.

2. Description

The Impeller and Casing are made of materials with a reduced risk of generating heat or sparks if there should be an operational problem.

3. Conditions of use



Please ensure no foreign matter e.g. paint particles gets into the airflow and causes damage to the Impeller.

4. Storage

Store Fan in a dry place and protect it against the weather. If stored for a long period check the Impeller Bearings move freely by turning it by hand.

5. Installation



Ensure Fans are mounted by competent, trained personnel.

- a) Protective grills may be fitted at the air inlet and outlet ends to avoid foreign substances falling inside or being sucked in.
- b) Do not install without proper support
- c) Be careful not to damage the Casing or any moving parts
- d) Do not apply unnecessary force e.g. levering, hammering when installing

6. Operation

- a) Maximum recommended Operating pressure: 4 bar
- b) Before starting blow out the air hose and then connect it to the fan
- c) Do **not** lubricate the Impeller
- d) Do **not** fit an online oiler or inject oil into the airline hose.

7. Maintenance

Repair of the Fan should only be performed by qualified and skilled workers

General checking: Bearing clearance too large?
 Lubricant on the bearing?
 Unusual noise?

Lubricating Bearing:

If the Fan is in daily use it is enough to turn grease cup twice per month.

The grease packed in the bearings is sufficient to at least for approx. 5000 working hours. After this time dismantle, clean and fill them 1/3 to 1/2 with high quality antifriction grease.

Replace damaged bearings.

USE ONLY ORIGINAL SPARE PARTS!

Technical Specification at an Operating Pressure of 4 bar

Description		8 1521 0300	8 1522 0300	8 1523 0300	8 1524 0300
Nominal diameter	mm	300	400	500	600
Unit length	mm	440	440	520	520
Weight	kgs	22	32	46	58
Air consumption	m ³ /min	1.28	2.11	2.73	3.84
Volume flow (unrestricted discharge)	m ³ /s	1.53	2.70	4.33	5.83
ID of hose	mm	19	19	19	19

SPARE PARTS LIST

CS Unitec, Inc.

DESCRIPTION:

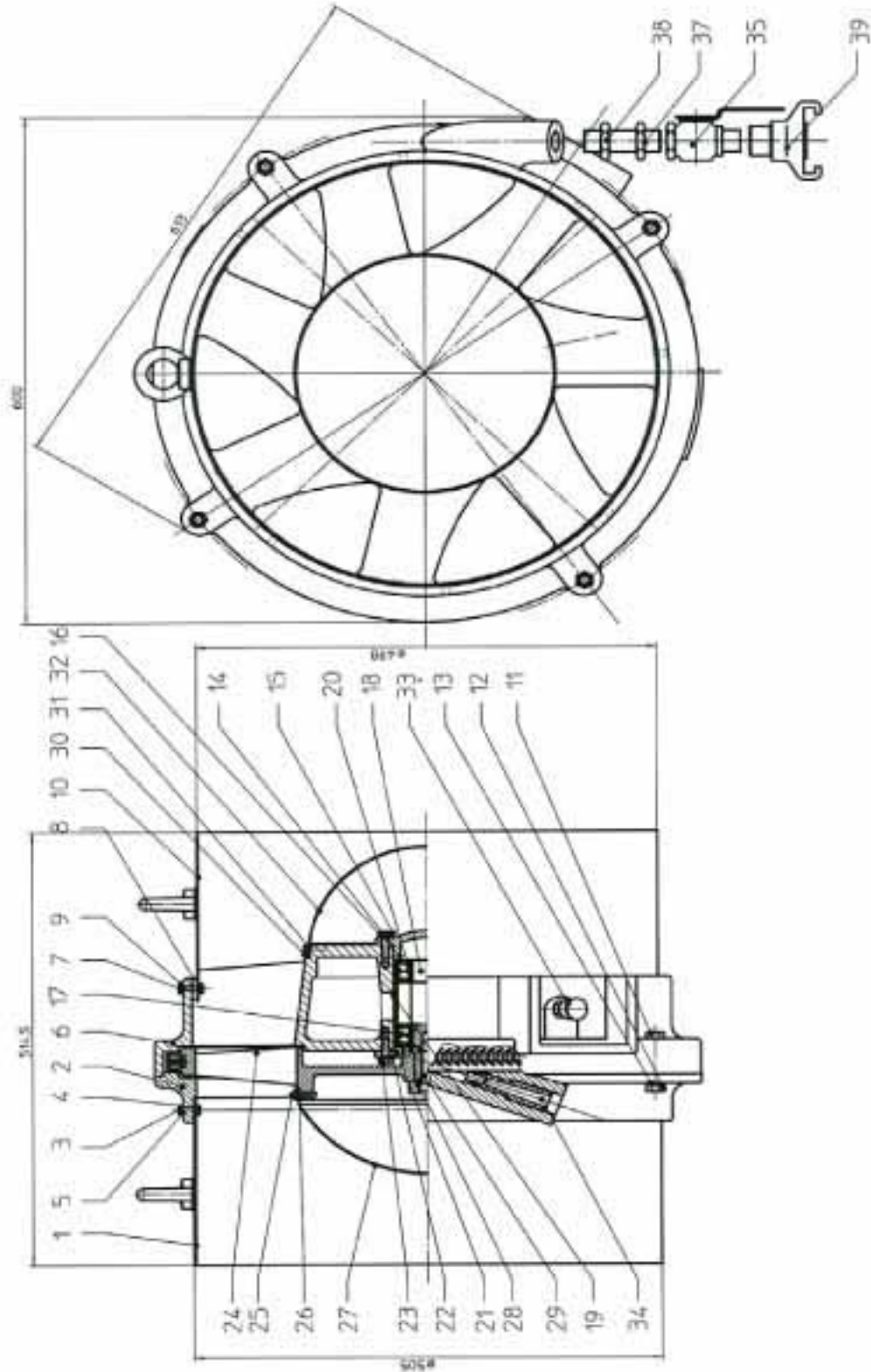
Air Driven Axial Fan

PART NUMBER / DRAWING NUMBER:

8 1523 0200

Page No. : 2 of 2

Date: 01/07



22 Harbor Avenue
Norwalk, CT 06850

Toll Free: 800-700-5919 Fax: 203-853-9921

