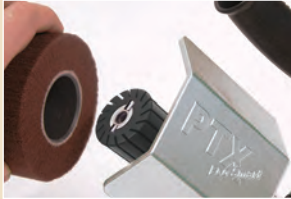
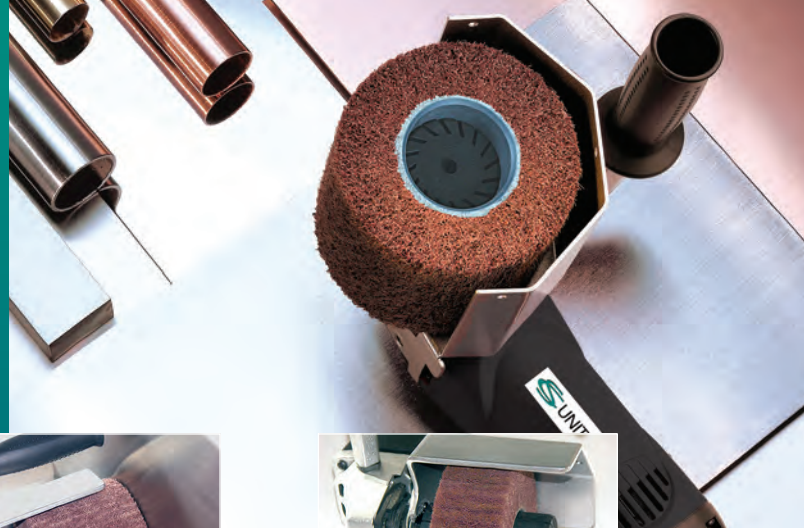


PTX ECO SMART

The professional linear finishing system for hard, continuous use.

A revolution in linear grinding! Simply slide on the abrasives and they secure themselves automatically when the machine turns. Fast and easy!



Press the spindle lock and simply slide on the abrasive wheels or brushes, turning in the correct direction onto the finned shaft. They will be secured automatically.



Grinding in corners is easy – simply slide the abrasive wheel on the finned shaft a little towards the outside.



Even narrow abrasive wheels can be used on the PTX Eco Smart and positioned freely on the finned shaft (no spacer rings required).



Adjustable handle for right and left-handed users. Anti-vibration handle for comfortable, fatigue-free working.



Simple speed control during operation. Tachogenerator for stable speeds.



QUICK-LOCK cable for fast, easy replacement if cable is damaged. 13 ft., included. **Part Number: 52004-2**



Infinitely adjustable cover guard with securing points for the extraction cover. **Part Number: 40005**



Extended polycarbonate cover guard for grinding wheel widths up to 6". **Part Number: 52706**



Hollow core shaft adapter for roller wheel widths up to 6" and vibration-free operation. **Part Number: 42004**



PTX Eco Smart

110 Volt
or 220 Volt



Perfect finishes on large surfaces, with no shadows or streaks.



New abrasive mounting system saves time, reduces cost and eliminates vibration.

PTX Eco Smart is a multi-functional grinding and polishing system for flat surfaces and open or closed pipe constructions.

- Grind from coarse to shadow-free matte finish, up to a mirror polish
- Remove welds, deep scratches, oxidation and rust
- Ideal for stainless steel, steel and nonferrous metals including aluminum, brass, bronze and copper, as well as wood and rigid plastic
- Complete line of grinding wheels, belt sleeves, special brushes, polishing and maintenance abrasives available
- Balanced straight-line handling, high torque and electronic speed control
- Abrasive mounting system allows quick changeover, vibration-free operation and 100% concentricity
- Core-free abrasives save money and produce less waste



Satin finishing using interleaf fleece wheel.



A wide selection of hollow-core abrasives is available for the PTX Eco Smart. The lack of a core insert means that the abrasives are lighter, easier to use and less expensive.

NOTE: We do continue to carry abrasives with core insert adapters for older LP 1503 VR model grinders and other machines. Contact us for more information.

PTX Eco Smart Specifications

Order No.	PTX ECO SMART	SP
Motor Power	15 Amp (1710 Watts); 110 Volt/60Hz (Also available: 230 Volt / 50 Hz)	
Speed Control Dial	Variable speed control from 1000 to 3800 RPM with tachogenerator for constant speed, even under load	
Wheel Width	2", 4" or 6" wide abrasives	
Wheel Diameter	up to 4 ¹ / ₂ "	
Weight	7.25 lbs.	
Standard Equipment	4" Interleaf (combi) wheel – P/N 47312 Shaft Adapter – P/N 42004	



A range of professional PTX Eco Smart kits is available for a variety of applications. See page 86 for more information.

Accessories



Hollow-core Shaft Adapter

Allows user to utilize more economical hollow-core abrasives on traditional surface finishers. Fits 3/4" dia. x 4" long shaft and 1/4" keyway(s). Overall diameter of adapter is 1-3/4" (45mm)
Part Number: 42004

The PTX Bench Grinder – MULTI-MAX

Multipurpose sander with two shaft mountings for grinding discs, angle grinders and grinding rollers for longitudinal grinders. Uses all PTX abrasive wheels and discs. (See page 92 for more details.)



PTX Eco Smart Kits

PTX Professional Kit For Metalworking

This set comes in a strong, impact-resistant transport case and contains everything you need for shadow-free industrial finishes. Match or create any finish up to a mirror finish on metals. Prevent marks and fingerprints with newly developed cleaning products and preservatives.

Part Number 47004A



PTX Professional Kit for Metalworking includes:

- 1 PTX Eco Smart machine
- 1 Professional Case (P/N 80002)
- 1 40 grit flap wheel, 4" x 4-1/8" (P/N 47211)
- 1 80 grit Interleaf (Combi) wheel, 4" x 4-1/8" (P/N 47312)
- 1 Expansion roller, 3-1/2" x 4" (P/N 47005)
- 2 80 grit grinding belt sleeve, 3-1/2" x 4" (P/N 42080)
- 1 Fine fleece (Nonwoven) sleeve, 3-1/2" x 4" (P/N 42012)
- 1 Medium fleece (Nonwoven) sleeve, 3-1/2" x 4" (P/N 42011)
- 2 A45 TZ Pyramid sleeves, 3-1/2" x 4" (P/N 42245)
- 2 A30 TZ Pyramid sleeves, 3-1/2" x 4" (P/N 42230)
- 2 A16 TZ Pyramid sleeves, 3-1/2" x 4" (P/N 42216)
- 2 A06 TZ Pyramid sleeves, 3-1/2" x 4" (P/N 42206)
- 3 SuperPolish sleeves, 3-1/2" x 4" (P/N 42013N)
- 1 Belt driving roller (P/N 47006)
- 2 80 grit grinding belts, 1.2" x 24" (P/N 49080)
- 1 Medium fleece (Nonwoven) belt, 1.2" x 26" (P/N 49002)
- 2 A45 TZ Pyramid belts, 1.2" x 24" (P/N 49345)
- 2 A30 TZ Pyramid belts, 1.2" x 24" (P/N 49330)
- 2 A16 TZ Pyramid belts, 1.2" x 24" (P/N 49316)
- 2 A06 TZ Pyramid belts, 1.2" x 24" (P/N 49306)
- 3 SuperPolish belts, 1.2" x 26" (P/N 49004N)
- 1 Mini high gloss polishing paste, pink (P/N 40015T)
- 2 Mini polishing pastes, white and blue [P/N 40013 (white) P/N 40014 (blue)]
- 1 PTX Brightex® scatter can (P/N 40029)
- 5 Microfiber cloths (P/N 40031)
- 1 Brilliance-Clean spray bottle (P/N 40050)
- 1 INOX-Protect spray bottle (P/N 40040)

PTX Basic Kit for Metal

Basic set for coarse finishing to #4 finish on flat surfaces and pipes.

Part Number 47003A

PTX Basic Kit for Metal includes:

- 1 PTX Eco Smart machine
- 1 Carrying Case (P/N 40008)
- 1 60 grit flap wheel, 4" x 4-1/8" (P/N 47212)
- 1 80 grit Interleaf (Combi) wheel, 4" x 4-1/8" (P/N 47312)
- 1 Expansion roller, 3-1/2" x 4" (P/N 47005)
- 1 Medium fleece (Nonwoven) sleeve, 3-1/2" x 4" (P/N 42011)
- 1 Belt driving roller (P/N 47006)
- 1 80 grit grinding belt, 1.2" x 24" (P/N 49080)
- 1 Medium fleece (Nonwoven) belt, 1.2" x 26" (P/N 49002)
- 1 40 grit grinding belt, 3.6" x 4" (P/N 42040)
- 1 60 grit grinding belt, 3.6" x 4" (P/N 42060)
- 1 80 grit grinding belt, 3.6" x 4" (P/N 42080)
- 1 120 grit grinding belt, 3.6" x 4" (P/N 42120)



PTX Kit For Woodworking

The complete set for treating wooden surfaces. Strong transport case with PTX Eco Smart and a range of brush wheels for various wood structures. Suction cover for extracting grinding dust particles.

Part Number 40004-3A

PTX Basic Kit for Woodworking includes:

- 1 PTX Eco Smart machine
- 1 Carrying Case (P/N 40008)
- 1 Suction cover (P/N 40005)
- 1 Spacer ring (P/N 40007)
- 1 PTX stranded wire wheel (P/N 46301)
- 1 Bristle wheel (P/N 46101)
- 1 Fiber wheel (P/N 46400)



PTX Grinding Wheels for Coarse and Fine Finishing

PTX abrasives from CS Unitec are made according to high quality standards. A unique production process guarantees high concentricity for vibration-free grinding – ideal for fatigue-free working and perfect surface finishes with no transitions or shadows. **Simply try it!** You will be surprised how much smoother a PTX grinding wheel or brush wheel is.



PTX FLEECE (Nonwoven) Wheel

Flexible nylon fleece impregnated with abrasives for a first-class finish. Produces shadow-free matte, satin and polished finishes. For removing oxidation on stainless steel and nonferrous metals and also suitable for smoothing wooden surfaces. Very high fleece content by fleece compression.

Diameter: 4"
Width: 2", 4-1/8" or 6"
Grit: 60, 80, 180, 280, 400, 600



PTX Interleaf (Combi) Wheel

Nylon fleece combined with abrasive flaps for matte finishing, burnishing and removing light scratches, oxidation and handling marks on stainless steel and all metals. For removing old paint on wood while smoothing at the same time.

Diameter: 4"
Width: 2", 4-1/8" or 6"
Grit: 60, 80, 180



PTX Flap Wheel

With radial abrasive cloth flaps in various grit sizes for removing rust, oxidation layers, minor scratches and for the regraining and burnishing of metals.

Diameter: 4"
Width: 2" or 4-1/8"
Grit: 24, 40, 50, 60, 80, 120, 180, 240



PTX CLEAN Wheel

Made of hard-textured, nonwoven fleece for cleaning and descaling welds, pore-deep removal of rust, oxidation and coatings, cleaning beams, bricks, etc. Produces an effective linear finish on stainless steel.

Diameter: 4"
Width: 2" or 4"
Grit: Medium



PTX GUM Wheel

Soft rubber impregnated with abrasive grit for the removal of minor scratches. Ideal for a bright, decorative linear finish on stainless steel and nonferrous metals and for smoothing wooden fibers.

Diameter: 4"
Width: 2" or 4"
Grit: 60, 180

HOLLOW-CORE ABRASIVES HAVE MANY ADVANTAGES:

- Easy to mount – simply slide on and off
- 100% concentricity – no vibration
- Lower cost and higher productivity!

We continue to carry abrasives with core inserts.
Contact us for more information.

PTX Fleece Nonwoven Wheels

Part No.	Grit	Size (dia. x width)
47411	60	4" x 4 1/8"
47412	80	4" x 4 1/8"
47413	180	4" x 4 1/8"
47414	280	4" x 4 1/8"
47415	400	4" x 4 1/8"
43601*	600	4" x 4 1/8"
47401	60	4" x 2"
47402	80	4" x 2"
47403	180	4" x 2"
47404	280	4" x 2"
47405	400	4" x 2"
47422	80	4" x 6"
47423	180	4" x 6"

* Keyed shaft

PTX Interleaf (Combi) Wheels

Part No.	Grit	Size (dia. x width)
47311	60	4" x 4 1/8"
47312	80	4" x 4 1/8"
47313	180	4" x 4 1/8"
47301	60	4" x 2"
47302	80	4" x 2"
47303	180	4" x 2"
47322	80	4" x 6"
47323	180	4" x 6"

PTX Flap Wheels

Part No.	Grit	Size (dia. x width)
47211	40	4" x 4 1/8"
47212	60	4" x 4 1/8"
47213	80	4" x 4 1/8"
47214	120	4" x 4 1/8"
47215	180	4" x 4 1/8"
47201	24	4" x 2"
47202	40	4" x 2"
47204	60	4" x 2"
47205	80	4" x 2"
47206	120	4" x 2"
47207	180	4" x 2"
47208*	240	4" x 2"

* Keyed shaft

PTX CLEAN Wheels

Part No.	Grit	Size (dia. x width)
47511	Medium (black)	4" x 4"
40018A*	Medium (black)	4" x 2"

* Keyed shaft

PTX GUM Wheels

Part No.	Grit	Size (dia. x width)
45061*	60	4" x 4 1/8"
45181*	180	4" x 4 1/8"
45180*	180	4" x 2"

* Keyed shaft



Expansion Roller

Use with sanding belts, fleece and felt sleeves. The sleeves are simply pushed over the expansion roller and held securely in place by the centrifugal force. **3-1/2" dia. x 4" wide - Part Number: 47005**

TIPS & TRICKS

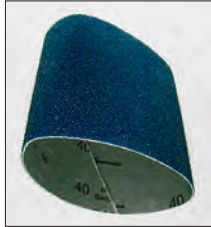
Expansion Roller - Hard Rubber

Internal expansion slots now allow easier sleeve replacement and improved adjustment to the workpiece, as well as vibration absorption and concentricity.

Part Number: 47005



Belt Sleeves for Expansion Roller



PTX Zirconium Grinding Belt Sleeve

Made of zirconium. Removes deep scratches and grinds weld seams on metals. Far less rework is required as a result of using the time-saving linear grinding technique.

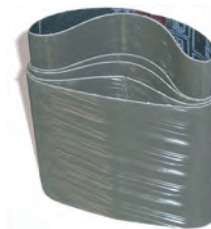
3-1/2" dia. x 4" wide
Grit: 40, 60, 80, 120, 150, 180



PTX Ceramic Grinding Belt Sleeve

High-performance ceramic aluminum oxide grain. Increased removal rate and longest life for highest productivity. Excels in all metals.

3-1/2" dia. x 4" wide
Grit: 40, 60, 80



PTX TZ Pyramid Sleeve

New abrasive cloth with pyramid-shaped grit structure. High material removal while producing a very fine finish, reducing the amount of work required when compared to grinding belt sleeves and fleece sleeves. Ideal for pre-polishing for fine mirror finishes and removing scratches and spot welds. Even roller scale can be removed easily.

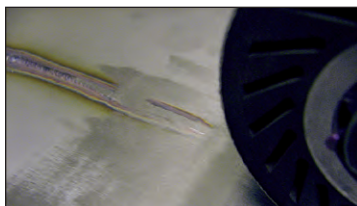
3-1/2" dia. x 4" wide
Grit: A65/320, A45/400, A30/600, A16/1200, A06/2000



PTX Fleece "Nonwoven" Sleeve

Nylon impregnated with abrasive grit for removing minor to medium scratch marks and oxidation coatings, matte and satin finishing and deburring applications.

3-1/2" dia. x 4" wide
Grit: Coarse, Medium, Fine, Superfine



The expansion roller is helpful when grinding large areas and removing large welds.

PTX Zirconium Grinding Belt Sleeves

Part No.	Grit	Size (dia. x w)	Quantity
42040	40	3 1/2" x 4"	10 per pack
42060	60	3 1/2" x 4"	10 per pack
42080	80	3 1/2" x 4"	10 per pack
42120	120	3 1/2" x 4"	10 per pack
42150	150	3 1/2" x 4"	10 per pack
42180	180	3 1/2" x 4"	10 per pack

PTX Ceramic Grinding Belt Sleeves

Part No.	Grit	Size (dia. x w)	Quantity
42440	40	3 1/2" x 4"	10 per pack
42460	60	3 1/2" x 4"	10 per pack
42480	80	3 1/2" x 4"	10 per pack

PTX TZ Pyramid Sleeves

Part No.	Grit	Size (dia. x w)	Quantity
42270	A100/220	3 1/2" x 4"	10 per pack
42265	A65/320	3 1/2" x 4"	10 per pack
42245	A45/400	3 1/2" x 4"	10 per pack
42230	A30/600	3 1/2" x 4"	10 per pack
42216	A16/1200	3 1/2" x 4"	10 per pack
42206	A06/2000	3 1/2" x 4"	10 per pack

TZ PYRAMID GRIT COMPARISON TABLE

Corresponds to grit size	A65	A45	A30	A16	A06
	320	400	600	1200	2000

PTX Fleece "Nonwoven" Sleeves

Part No.	Grit	Size (dia. x w)	Quantity
42010	coarse (brown)	3 1/2" x 4"	4 per pack
42011	medium (red)	3 1/2" x 4"	4 per pack
42012	fine (blue)	3 1/2" x 4"	4 per pack
42009	superfine (grey)	3 1/2" x 4"	4 per pack

FLEECE COMPARISON TABLE

Corresponds to grit size	Coarse (brown)	Medium (red)	Fine (blue)	Superfine (grey)
	80	180	280	400

TIPS & TRICKS



To remove the grinding sleeve, place the expansion roller on a round object that is slightly smaller than the roller. Then push the sleeve down slightly using both hands.

Special Brushes for Metals, Wood and Hard Plastics



PTX Stranded Wire Wheels

Sturdy steel wire brush. For deburring, rust removal, roughing and cleaning metal. For brushing out soft annual rings on timber, leaving a rough rustic effect.

4" dia. x 2-7/8" wide – **Part No. 46301***

4" dia. x 1" wide – **Part No. 47702***

* Requires spacer ring 40007



PTX Bristle Wheel

Elastic nylon brush impregnated with abrasive grit. For roughing and deburring metal, as well as creating a rustic effect with even annual ring transitions on timber.

4" dia. x 2-7/8" wide – **Part No. 46101***

4" dia. x 1" wide – **Part No. 46102N***

* Requires spacer ring 40007



PTX Stainless Steel Wire Wheels

Elastic stainless steel wire brush. For cleaning welds, deburring, removing rust, roughing and removing coatings.

4" dia. x 2-7/8" wide – **Part No. 47721***

4" dia. x 1" wide – **Part No. 46202N***

* Requires spacer ring 40007

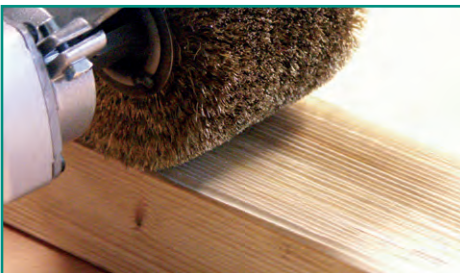


PTX Fiber Wheel

Elastic fiber brush. For polishing stained wood, satin finishing, pore-deep dust removal and cleaning applications.

4" dia. x 4" wide – **Part No. 46400**

Note: Above wheels are configured for keyed shaft. Hollow-core shaft adapter not necessary.



Stranded wire wheel for creating a rustic effect on wood



Cotton Buffing Wheel

Cotton yarn wheel for use with compounds. Produces a very bright high mirror finish. Use on flat, contoured or irregular surfaces.

4" dia. x 2" wide

Part No. CS 2405*

4" dia. x 4" wide

Part No. CS 2410

4" dia. x 6" wide

Part No. CS 2420

* Requires spacer ring 40007

Abrasives for Polishing to High-Gloss and Mirror Finish



PTX Felt Sleeve

Made of soft merino (endless) for polishing large stainless steel and nonferrous surfaces quickly to a mirror finish. Also suitable for hard plastics. Must be used with the expansion roller.

3-1/2" dia. x 4" wide (4 per pack)

Part No. 42013



PTX SuperPolish Sleeve

Revolutionary special fleece produces perfect brilliant, shadow-free mirror finishes on stainless steel and nonferrous metal surfaces using polishing compounds (white and blue) and pink polishing cream. SuperPolish fleece is absorbent, does not smear and saves significant work time. Must be used with the expansion roller.

3-1/2" dia. x 4" wide (4 per pack)

Part No. 42013N



Poly-PTX Cotton Rings

Fleece rings for polishing narrow or uneven stainless steel and nonferrous metal surfaces using polishing compounds (white and blue) and pink polishing cream. A separate Poly-PTX Cotton Ring must be used for each compound or cream so as not to mix different compound grits.

For polishing narrow or uneven stainless steel surfaces:

100mm x 12mm (4" dia. x 1/2" wide), 8 per pack, Medium **Part No. 40019M**

100mm x 12mm (4" dia. x 1/2" wide), 8 per pack, Soft **Part No. 40019-T**

For polishing aluminum, brass and other nonferrous metals:

100mm x 12mm (4" dia. x 1/2" wide)

Part No. 250 521

See page 90 for pre-grinding and polishing compounds, mirror finish creams, cleaners and protective sprays for finished metal surfaces.



Polishing and Maintenance Products (cont'd)



PTX Pre-grinding & Polishing Compound
Essential for polishing all metals, including stainless steel, aluminum, etc.

PTX WHITE pre-polishing compound (23 oz.) – **Part No. 40013**

PTX BLUE finishing compound (23 oz.) – **Part No. 40014**

PTX WHITE and BLUE mini pastes (approx 4.2 oz. ea.) – **Part No. 40009**



PTX Brightex® Softclean Powder (non-caustic)
For removing cream and compound residues. Scatter on the surface and wipe off with a microfiber cloth.

Aluminum scatter container with Brightex®
(approx. 7 oz.) – **Part No. 40029**

Bag, 2.2 lbs. – **Part No. 40028**

Scatter container only – **Part No. 40020**



PTX Polishing Cream, Pink

For high reflective finishing. Produces a perfect mirror finish on stainless steel and nonferrous metals when used with the SuperPolish Sleeve or Belt.

Miniature tube, 2 oz. – **Part No. 40015T**

Can, 2.2 lbs. – **Part No. 40015**

Microfiber Cloths

For pore-deep cleaning and even distribution of maintenance products and polishes. Our microfiber cloths produce a top finish on all materials.

Size: 13" x 14", package of 25 – **Part No. 40031**



INOX-Protect (hard sealant)
Protects finished and polished metal surfaces (stainless steel, steel, aluminum, brass, copper, etc.) with a clear, dry adhesive film. Removes fingerprints and other dirt.

Canister (w/ spray bottle), **1.3 gal.** – **Part No. 40041**

Spray bottle, 17 oz. – **Part No. 40040**



Brilliance-Clean

For streak- and residue-free cleaning of all surfaces, including stainless steel, steel, aluminum, brass and copper. Brilliance-Clean is not harmful to plastics, wood or coated surfaces. Remove fingerprints, dust, compound residue, minor oil and grease marks and adhesive residue. Evaporates quickly without leaving residue.

Canister (w/ spray bottle), **1.3 gal.** – **Part No. 40051**

Spray bottle, 17 oz. – **Part No. 40050**



POLY Protection (oil film)

For cleaning and preserving finished and polished stainless steel and nonferrous metal surfaces. Protects against shadows and finger and water marks for a long time. Spray on and rub off with a microfiber cloth. Produces a darker effect on finished surfaces.

Canister (w/ spray bottle), **1.3 gal.** – **Part No. 40012**

Spray bottle, 17 oz. – **Part No. 40011**

TIPS & TRICKS

A perfect mirror finish on stainless steel

The newly developed grinding and polishing system, featuring special **TZ Pyramid** and **SuperPolish** fabrics from CS Unitec, produces a perfect mirror finish quickly and in just a few steps.



Step 1 - Pre-grinding

Prepare with **TZ Pyramid** sleeve grit A45 (possibly A65) to remove mill skin, scratches and minor unevenness.



Step 2 - Intermediate grinding

Rework with **TZ Pyramid A30** and complete with **TZ Pyramid A16**. Use very little grinding pressure and grind perpendicular and diagonally.



Step 3 - Mirror finish polish

Use the **SuperPolish** sleeve with **white polishing paste**, then with **blue polishing paste**. Use a different sleeve for each paste grit. Polish diagonally. For a high-gloss finish, use the **SuperPolish** sleeve with the **pink high-gloss polishing cream**. Polish in one direction only.

Tip: After each step, remove the compound residue from the workpiece with **PTX Brightex® Softclean Powder** and a microfiber cloth.

The result... a brilliant mirror finish!



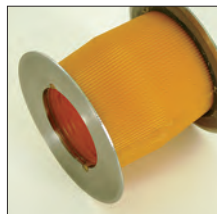
Maintain and protect finished or polished stainless steel surfaces.

Compound and cream residues can be removed using **PTX Brightex® Softclean** powder. Simply scatter on the softclean powder and wipe it off using a microfiber cloth.

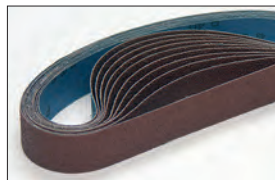
Compound residues, fingerprints, dust, minor oil and grease marks and adhesive residue can be removed effortlessly with **Brilliance-Clean**. Any residue will evaporate immediately.

To protect finished or polished metal surfaces, spray **INOX-Protect** on the surface, rub off with a microfiber cloth, wipe the surface dry and then polish briefly. The surface will be protected by a dry, invisible film for several weeks. Polished finishes will not be darkened by this product.

Abrasives for Pipe Constructions – Open or Closed



PTX Grinding Belt Roller with stainless steel flanges
For use with grinding, fleece, SuperPolish and felt belts. The belt roller is made of wear-resistant soft Vulcan with stainless steel discs on the sides. The surface is grooved to ensure that the abrasive belt does not slip.
Diameter: 3.5" x 2.8" Part No. 47006



PTX Grinding Belt in high-quality aluminum oxide (closed)
For coarse and initial grinding, rust removal and smoothing round metal pipes. For use with grinding belt rollers. For use on closed pipe constructions, see TIPS & TRICKS below. **Dimensions: 1.2" x 24"**
Grit: 40, 60, 80, 120, 150, 180, 240
[See ordering information at right.](#)

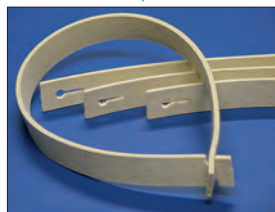


PTX TZ Pyramid Belt (closed)
Abrasive fabric with pyramid-shaped grit structure for removing scratches, roller scale and spot welds. TZ Pyramid belts allow high material removal while producing a very fine finish. They are ideal for initial grinding before polishing to a mirror finish. Because grit fineness is increased slowly, it is possible to omit several operations. Use with grinding belt rollers. For use on closed pipe constructions, see TIPS & TRICKS below. **Dimensions: 1.2" x 24", Grit: A65, A45, A30, A16, A06**
[See ordering information at right.](#)



PTX Fleece Nonwoven Belt (open)
Buttonhole fastening system for fine grinding and pre-polishing open and closed pipe constructions and handrails. The fleece belt can be opened and closed as often as necessary. For use with grinding belt rollers. International patent and design protected. **Dimensions: 1.2" x 26", Grit: coarse, medium, fine, superfine. See ordering information at right.**

With buttonhole – **PATENTED!**



PTX Felt Belt (open)
Made of merino felt with buttonhole fastening system for polishing open and closed pipe constructions and handrails. The polishing belt can be opened and closed as often as necessary. Use with grinding belt rollers and our polishing compounds and creams. Use a separate felt belt for each compound and cream grit - do not mix grits. International patent and design protected. **Dimensions: 1.2" x 26" Part No. 49004**



PTX SuperPolish Belt (closed)
For a perfect mirror finish on pipe constructions and handrails. SuperPolish is a new, special micro fleece that produces a perfect, brilliant mirror finish on stainless steel and nonferrous metals. Smears and shadows are eliminated when used with our polishing compounds (white and blue) and pink cream. SuperPolish is absorbent and saves time. Use with grinding belt rollers. **Dimensions: 1.2" x 26" (not available with buttonhole fastening system) Part No. 49004N**

PTX Grinding Belts (Aluminum Oxide)

Part No.	Grit	Size (w x l)	Quantity
49040	40	1.2" x 24"	10 per pack
49060	60	1.2" x 24"	10 per pack
49080	80	1.2" x 24"	10 per pack
49120	120	1.2" x 24"	10 per pack
49150	150	1.2" x 24"	10 per pack
49180	180	1.2" x 24"	10 per pack
49240	240	1.2" x 24"	10 per pack

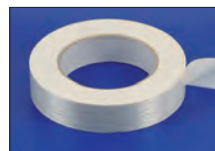
PTX TZ Pyramid Belts

Part No.	Grit	Size (w x l)	Quantity
49365	A65/320	1.2" x 24"	10 per pack
49345	A45/400	1.2" x 24"	10 per pack
49330	A30/600	1.2" x 24"	10 per pack
49316	A16/1200	1.2" x 24"	10 per pack
49306	A06/2000	1.2" x 24"	10 per pack

PTX Fleece Nonwoven Belts (open)*

Part No.	Grit	Size (w x l)	Qty.
49001	coarse (brown)	1.2" x 26"	1
49002	medium (red)	1.2" x 26"	1
49003	fine (blue)	1.2" x 26"	1
49007	superfine (grey)	1.2" x 26"	1

* Feature buttonhole fastening system



PTX Special Adhesive Tape
Integrated glass fabric for joining grinding belts. Strong, heat-resistant adhesive. Join PTX grinding and TZ Pyramid belts for use on closed pipe constructions. Wrap tape around entire length of grinding belt, overlapping approximately 370°.

Dimensions: 1" x 165' Part No. 49000



INOX Miter Tape
Protect adjacent finishes when grinding. Self-adhering 304 Stainless tape for use when creating distinct edges on finishes. Excellent for creating mitered corners. Easily cut with scissors, fast application and residue-free removal.

Minimal thickness for accurate grinding lines.
Dimensions: One roll measures 6" x 8.2 ft. Part No. 40070

TIPS & TRICKS

Grinding and polishing closed pipe constructions

Fleece and felt belts with the patented buttonhole fastening system are ideal for working on closed pipe constructions and handrails. The grinding belt can be placed over the pipe and closed or opened again in a twist using the buttonhole system. Changing a belt is quick and easy. The belt can be opened and closed as often as required.

Closed belts such as the high-quality aluminum oxide belt or the TZ Pyramid belt must be cut open to work on closed pipe constructions. Place the belt over the pipe and join using our special adhesive tape (P/N 49000) over the entire length (approx. 370°).

