

AXIAL FANS AND AIR MOVERS

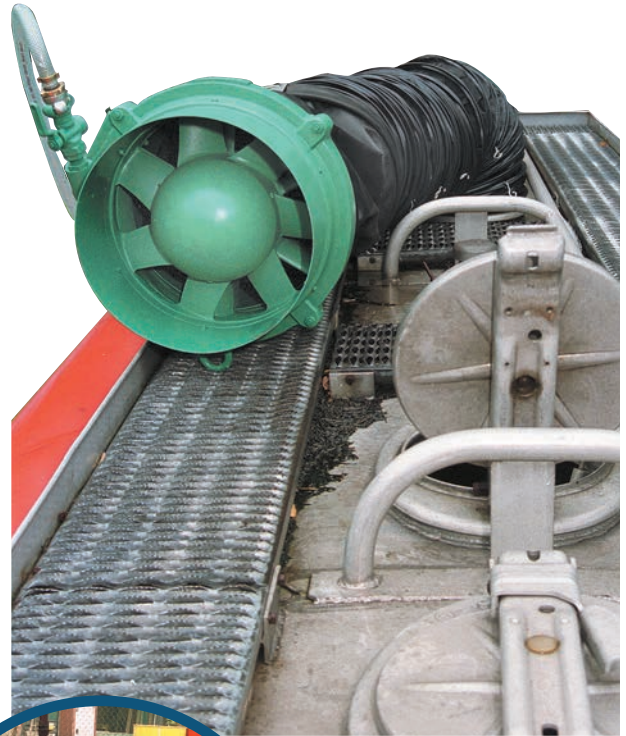
Highly efficient, explosion-proof pneumatic- and electric-powered units for ventilating, exhausting and cooling.

CS Unitec's pneumatic and electric axial fans and air movers are ideal for ventilating, exhausting and cooling in applications such as ship holds, underground mining, shipyards, refineries, petrochemical plants, oil platforms, power plants, tunneling, construction and more.

Explosion Proof

For use in Ex Zones and Hazardous Environments

Electric fan motors are intrinsically safe, Ex.



Caution: User must follow all appropriate safety regulations when choosing a tool for their particular working environment.

Explosion-Proof Axial Fans, Pneumatic and Electric, 12" to 24" diameter



8 1020 Series Electric Axial Fans with protective grille on inlet side
2118 cfm output



8 1524 0300 Pneumatic Axial Fan, 24" dia.
12,353 cfm output @ 90 psi



8 1620 0010 Pneumatic Air Mover, 7" dia.
2366 cfm output @ 90 psi



W 70 Pneumatic Air Mover, 6" dia.
3000 cfm output @ 90 psi

Explosion-Proof Pneumatic Axial Fans and Air Movers

| Order No. | Description | Diameter | Power | Air Consumption | Volume Output | Weight | dBA |
|-------------|-------------|----------|-----------|------------------|---------------------|------------|-----|
| 8 1521 0300 | Axial Fan | 12" | Pneumatic | 46 cfm @ 90 psi | 3240 cfm @ 90 psi | 48.5 lbs. | 101 |
| 8 1522 0300 | Axial Fan | 16" | Pneumatic | 75 cfm @ 90 psi | 5720 cfm @ 90 psi | 70.4 lbs. | 92 |
| 8 1523 0300 | Axial Fan | 20" | Pneumatic | 97 cfm @ 90 psi | 9170 cfm @ 90 psi | 101.2 lbs. | 90 |
| 8 1524 0300 | Axial Fan | 24" | Pneumatic | 136 cfm @ 90 psi | 12,353 cfm @ 90 psi | 127.6 lbs. | 86 |
| 8 1603 0300 | Axial Fan | 12" | Pneumatic | 20 cfm @ 90 psi | 2119 cfm @ 90 psi | 28.6 lbs. | 85 |
| W 40 | Air Mover | 4" | Pneumatic | 85 cfm @ 90 psi | 1140 cfm @ 90 psi | 11 lbs. | 91 |
| W 70 | Air Mover | 6" | Pneumatic | 166 cfm @ 90 psi | 3000 cfm @ 90 psi | 22 lbs. | 91 |
| 8 1620 0010 | Air Mover | 7" | Pneumatic | 158 cfm @ 90 psi | 2366 cfm @ 90 psi | 8 lbs. | 104 |

Explosion-Proof Electric Axial Fans

| Order No. | Description | Diameter | Power | Volume Output | Weight | dBA | ATEX Class |
|--------------|-------------|----------|-----------------------------|---------------|---------|-----|--------------|
| 8 1020 0140 | Axial Fan | 12" | 230/400 V 50 Hz 3-phase | 2118 cfm | 44 lbs. | 86 | Ex II 2 GcT3 |
| 8 1020 0840 | Axial Fan | 12" | 110 V 50 Hz single phase | 2118 cfm | 45 lbs. | 85 | Ex II 2 GcT3 |
| 8 1020 0850* | Axial Fan | 12" | 110 V 50 Hz single phase | 2118 cfm | 45 lbs. | 85 | Ex II 2 GcT3 |
| 8 1020 0860* | Axial Fan | 12" | 110 V 50/60 Hz single phase | 2118 cfm | 45 lbs. | 85 | Ex II 2 GcT3 |
| 8 1020 0870 | Axial Fan | 12" | 230 V 50 Hz single phase | 2118 cfm | 45 lbs. | 85 | Ex II 2 GcT3 |

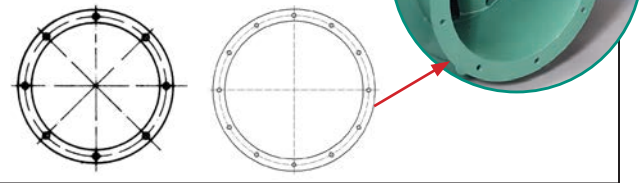
* with switch and cable

Optional Accessories

| | |
|-------------|------------------------------------------------------------------|
| 9 3001 0010 | Mounting Flange for 12" Axial Fans, DIN 21603 (1 or 2 per fan) |
| 9 3001 0020 | Mounting Flange for 16" Axial Fans, DIN 21603 (1 or 2 per fan) |
| 9 3001 0030 | Mounting Flange for 20" Axial Fans, DIN 21603 (1 or 2 per fan) |
| 9 3001 0040 | Mounting Flange for 24" Axial Fans, DIN 21603 (1 or 2 per fan) |
| 8 1501 7010 | Protective Grille for 12" Axial Fan (1 or 2 per fan) |
| 8 1502 7010 | Protective Grille for 16" Axial Fan (1 or 2 per fan) |
| 8 1503 9010 | Protective Grille for 20" Axial Fan (1 or 2 per fan) |
| 8 1504 7010 | Protective Grille for 24" Axial Fan (1 or 2 per fan) |
| 8 1601 2070 | Protective Grille for 8 1020 Fans (1 or 2 per fan) |
| 9 3707 0020 | Grounding Cable |
| 9 3709 0260 | Connecting Piece, Antistatic, for 12" Axial Fan (dwg 1) |
| 9 3709 0270 | Connecting Piece, Antistatic, for 16" Axial Fan (dwg 1) |
| 9 3709 0280 | Connecting Piece, Antistatic, for 20" Axial Fan (dwg 1) |
| 9 3709 0290 | Connecting Piece, Antistatic, for 24" Axial Fan (dwg 1) |
| 9 3709 0300 | Quick-seal Coupling, Antistatic, for 12" Axial Fan (dwg 2) |
| 9 3709 0310 | Quick-seal Coupling, Antistatic, for 16" Axial Fan (dwg 2) |
| 9 3709 0320 | Quick-seal Coupling, Antistatic, for 20" Axial Fan (dwg 2) |
| 9 3709 0330 | Quick-seal Coupling, Antistatic, for 24" Axial Fan (dwg 2) |
| 9 3709 0220 | Plastic Ducting, 16' long, Antistatic, for 12" Axial Fan (dwg 3) |
| 9 3709 0230 | Plastic Ducting, 16' long, Antistatic, for 16" Axial Fan (dwg 3) |
| 9 3709 0240 | Plastic Ducting, 16' long, Antistatic, for 20" Axial Fan (dwg 3) |
| 9 3709 0250 | Plastic Ducting, 16' long, Antistatic, for 24" Axial Fan (dwg 3) |
| 9 3703 0050 | Adapter, dia. 12"/8" (dwg 4) |
| 9 3709 0060 | Steel Ducting, dia. 8", 15' long (dwg 5) |
| 9 3709 0130 | Plastic Hose, dia. 8", 15' long (dwg 5) |
| 9 3702 0030 | Suction Nozzle, 12"/8" (dwg 6) |
| 9 3703 0020 | Y-piece, 2x6", Antistatic (dwg 7) |
| 9 3709 0040 | Steel Ducting, NW 6", 15' long (dwg 8) |
| 9 3709 0110 | Plastic Hose, NW 6", 15' long (dwg 8) |
| 9 3702 0020 | Suction Nozzle, 6"/9" (dwg 9) |

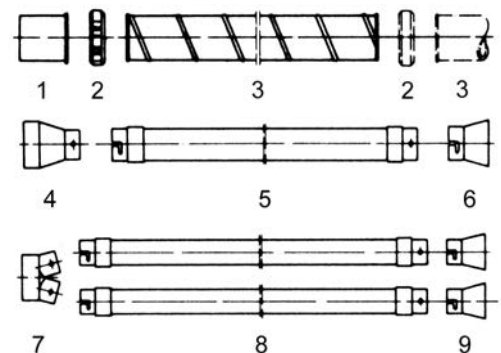
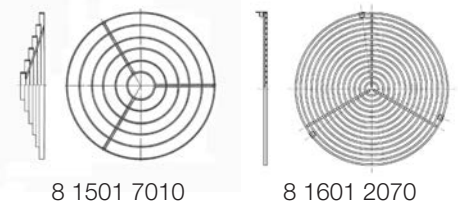
Mounting Flanges

For fitting fans to flanged pipes for suction or discharge



Protective Grilles

For use on non-ducted fans.



Caution: User must follow all appropriate safety regulations when choosing a tool for their particular working environment.