

# Accessories

## Coolants and Cutting Pastes

*Coolant extends the life of cutting tools – Ideal for cutting steel, stainless steel and hard metals*

### ProLube™

Your cutting tools will work cooler, longer and more efficiently with ProLube™ Lubricants from CS Unitec.

- Prolong tool life by reducing friction and wear
- Unique composition provides excellent adhesion to cutting tools for maximum lubrication
- Corrosion inhibitor
- Non-toxic



**Water soluble  
16:1**

### ProLube™

**Paste** (12 oz. tub) – Part No. **CS 7030-712**

**Liquid** (1 gallon) – Part No. **CS 7010-504**

*Upgrade your drill's cooling system: see page 49 for arbors with automatic cooling.*



- High-performance
- Liquid coolant is concentrated for dilution with water
- Eco-friendly

**Paste** (2.2 lb. tub) – Part No. **ZHS 550**

**Liquid** (1 quart) – Part No. **ZHB 001**

## Cutting Oil

- High-performance, biodegradable, non-hazardous oils and pastes
- Oils for heavy removal of metal, including stainless steel
- Chlorine-free (MSDS on bottle/tub)
- Not necessary to dilute with water

### Cutting Oil:

Part No. **ZHS 006** (quart)

Part No. **ZHS 005** (gallon)



## Pressurized Coolant Bottle

Use with any automatic internal lubrication system.  
Part No. **9 4002 0020**

## Pilot Pins for Cutters

- Milled channel efficiently supplies internal lubrication to cutting teeth
- Available for cutter diameters ranging from 7/16" to 5 1/8" and up to 8" depth of cut
- See price list for part numbers



*Shown at right:  
2-piece pin for  
3" and 4" depth  
cutters with  
8mm pilot hole  
(Part No. 7-3-402).*



# Accessories

## Arbors for Annular Cutters

- Use on any magnetic drill stand, drill press or shop equipment with a Morse Taper intake of No. 2, 3 or 4
- Available for Annular Cutter shank sizes of  $\frac{3}{4}$ " or  $1\frac{1}{4}$ " Weldon
- Available for automatic internal cooling or manual cooling



### Manual Cooling

- ZIA 219M** – Morse Taper No. 2  
 $\frac{3}{4}$ " arbor bore
- ZIA 319M** – Morse Taper No. 3  
 $\frac{3}{4}$ " arbor bore
- ZIA 30/75** – Morse Taper No. 3  
 $\frac{3}{4}$ " arbor bore, 3" depth
- ZIA 419M** – Morse Taper No. 4  
 $\frac{3}{4}$ " arbor bore



### Automatic Cooling

- ZIA 219KN** – Morse Taper No. 2  
 $\frac{3}{4}$ " arbor bore
- ZIA 319KN** – Morse Taper No. 3  
 $\frac{3}{4}$ " arbor bore
- ZIA 30/32** – Morse Taper No. 3  
 $1\frac{1}{4}$ " arbor bore
- ZIA 432 KN** – Morse Taper No. 4  
 $1\frac{1}{4}$ " arbor bore

## Quick-Lock Arbor with Automatic Internal Cooling

- Keyless for fast, no-tools changeover for  $\frac{3}{4}$ " dia. shank annular cutters
- Automatic internal cooling
- Turn, click... go!

**ZSS 200** – Morse Taper No. 2  
for  $\frac{3}{4}$ " dia. shank  
annular cutters

**ZSS 300** – Morse Taper No. 3  
for  $\frac{3}{4}$ " dia. shank  
annular cutters



**turn,  
click...**



**Keyless,  
quick-change  
system for annular  
cutters saves time  
and money.**

**Just twist and lock!**



## Drill Chucks for Straight-Shank Twist Drills

- Two capacities:  $\frac{1}{2}$ " and  $\frac{3}{4}$ "; four chucks and adapters to fit all magnetic drills

- A) **IBC 17** –  $\frac{1}{2}$ " chuck for CSU 32 series
- B) **IBC 18** –  $\frac{1}{2}$ " chuck with  $\frac{3}{4}$ " shank for MABasic 200, MABasic 400 and AIRBOR™ (fits all drills with  $\frac{3}{4}$ " arbor bore)
- C) **IBC 21** –  $\frac{3}{4}$ " chuck with MT3 shank for MAB 525, MAB 825, MAB 845 and CSU 100/3RL
- D) **IBC 22** –  $\frac{3}{4}$ " chuck with MT2 shank for MABasic 450, MAB 455, MAB 485 and CSU 50 series



# Accessories

## Extensions for Annular Cutters

*Extra-long holders extend stroke of drills*



- Extend cutter reach up to 18"
- Available for magnetic drills with  $\frac{3}{4}$ " arbor bore or MT3
- Also available with 3 flats for straight shank drill chucks and R8 shanks for drill presses
- Drill difficult-to-reach areas
- Extend cutter reach over the side or through an existing hole\*

**7-9-902** – 2" extension  
**7-9-903** – 3" extension  
**7-9-906** – 6" extension  
**7-9-912** – 12" extension  
**7-9-918** – 18" extension

**7-9-1146** – 6" extension,  
 1-1/4" male x 1-1/4"  
 female shank

\* Hole diameter must be larger than  $1\frac{5}{16}$ "  
 to accommodate width of extension



We also offer extensions with the following connections:

**3 Flats for Geared  
 Chucks x  
 $\frac{3}{4}$ " arbor**



**7-9-100** – 2-1/8" length, 1/2" shank  
**7-9-200** – 2" length, 3/4" shank

**R8**



**7-9-500** – R8, 1-3/4" length; 3/4" arbor bore  
**7-9-506** – R8, 6" length; 3/4" arbor bore  
**7-9-700** – R8, 2-3/4" length; 1-1/4" arbor bore

## 2-in-1 Drill/Taps Drill and tap with one tool

National Coarse Threads (UNC) – sizes available:

**CS500** – 1/2" x 13 UNC  
**CS625** – 5/8" x 11 UNC  
**CS750** – 3/4" x 10 UNC

**CS875** – 7/8" x 9 UNC  
**CS1000** – 1" x 8 UNC  
**CSDT-UNCKIT** – 1/2", 5/8", 3/4" & 1" drill/taps



## 82° and 90° Countersinks

- Manufactured of HSS with 5% cobalt
- $\frac{3}{4}$ " Weldon shank

Countersink hole sizes:

**CTS 30** from  $\frac{5}{8}$ " to 2" / 82°

**CTS 50** from  $\frac{5}{8}$ " to 2 1/8" / 90°



## Detachable Chip Guard

*Protects against flying chips when drilling*



**ZSS 050** – for MAB 155, MAB 485  
 and MAB 525

## Quick-Change Tapping Chucks

Part No. **GWS.830C** tapping chuck includes two variable clamp collets to tap  $\frac{3}{8}$ " to 1 1/8". It is the least expensive system if you will tap more than 4 sizes. **GWS.830C** has an MT3 connection.

For use with all MT3 drills.



Variable clamp collets for use in tap chuck No. **GWS.830C**:  
 Part No. **GST-160** for shanks  $\frac{3}{8}$ " –  $\frac{5}{8}$ ".  
 Part No. **GST-230** for shanks  $\frac{5}{8}$ " –  $\frac{7}{8}$ ".



**GSW 444  
 Quick-  
 Change  
 Chuck**

Part No. **GWS 444** quick-change tapping chuck with MT4 connection (for MAB 1300). Collets not included.

**GSS-420** collet for 20mm shanks  
**GSS-422** collet for 22mm shanks  
**GSS-427** collet for 27mm shanks  
**GSS-433** collet for 33mm shanks  
**GSS-442** collet for 42mm shanks



**GSS-4xx  
 Collet**



# Clamping Devices

## MOBIL CLAMP

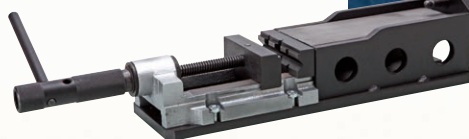
**A true advance in magnetic drilling technology:**  
The new clamping system **MOBIL CLAMP** can be used to convert a magnetic drilling machine into a bench drill.

Extends the functionality of your portable magnetic drill. Ideal for parts that previously could only be drilled in the workshop – they can now be machined on site. **MOBIL CLAMP** makes it possible to drill, countersink, ream or tap small parts, since these can be mounted into the quick clamping device.

With the mounting of a magnetic drilling machine onto the surface of the vice and the subsequent activation of the magnet, you will have a versatile, stationary drilling machine in next to no time. The magnetic drilling machine becomes a multi-purpose machine: whether large or small applications, flat or high, with the twist drill or the reamer, everything is possible. A stable support, designed for the **MOBIL CLAMP** clamping device, ensures the correct working height and a comfortable and reliable operation.

### MOBIL CLAMP

Order No.	Jaw width	Quick-action clamping jaw	V-block clamping jaw
<b>ZMC 180</b>	4" (100mm)	3.15" (80mm) clamping width	•



### ZMC 300

Base stand for clamping device



## Drilling stand and vise for hand drills



Drill not included.

- Industrial drilling pillars for commercial hand drills with 43mm chuck journal diameter.
- Optimum stability by cast base plate combined with a pillar top of the MAB series.
- Versatile usability by a drill vise with 4" (100mm) jaw width (special accessories).
- Screws for slots are available for additional security under higher loads (special accessories).
- Working stroke of 9" - 17" (230 - 425mm).

### Magnetic Drilling Pillar

Order No. **MBS 300**

For hand drills with a 1-11/16" collar diameter and 7" stroke.



Drill not included.

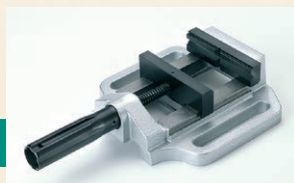
### Drilling Pillar

Order No. **ZBS 100**



### Vise

Order No. **ZST 300**  
jaw width: 4" (100mm)  
clamping range: 4" (100mm)



### Accessories

Screws for T-Slots – Order No. **ZTN 100**  
Hexagon Nut with Collar – Order No. **ZSM 100**

# Vacuum Plates

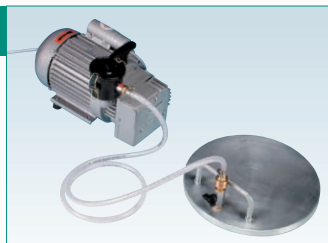
*For applications where drill alone will not adhere to surface*

## Vacuum Plate for Channeled Plates

Order No. **ZAV 301** (vacuum plate only)

Order No. **ZAV 310** (vacuum plate and vacuum pump, 110V)

Ideal for channeled plates. High-performance vacuum pump with circular oil lubrication. Clamping plate diameter: 11.8"

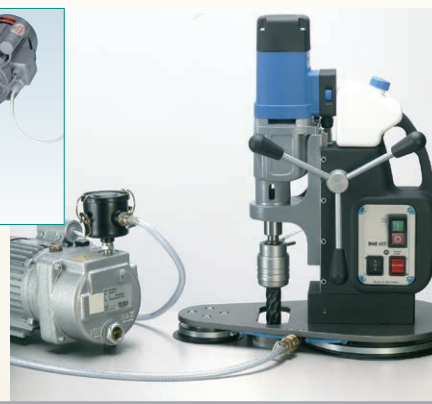


## Vacuum Plate for Smooth Surfaces

Order No. **ZAV 401** (vacuum plate only)

Order No. **ZAV 410** (vacuum plate and vacuum pump, 110V)

Ideal for smooth surfaces. High-performance vacuum pump with circular oil lubrication. Clamping plates with two suction surfaces and cut-through drilling area.



## Metal Chip Cleanup Tools

- Easily clean up sharp-edged drill chips, screws and other metal parts
- Ideal for hard-to-reach spaces

### Power Cleaner – POW 200

*Two-in-one tool for removing chips*



- Hook pulls away metal swarf from drill
- Brush cleans fine chips



### Power Worker – POW 100

*Simple cleanup of metal chips*

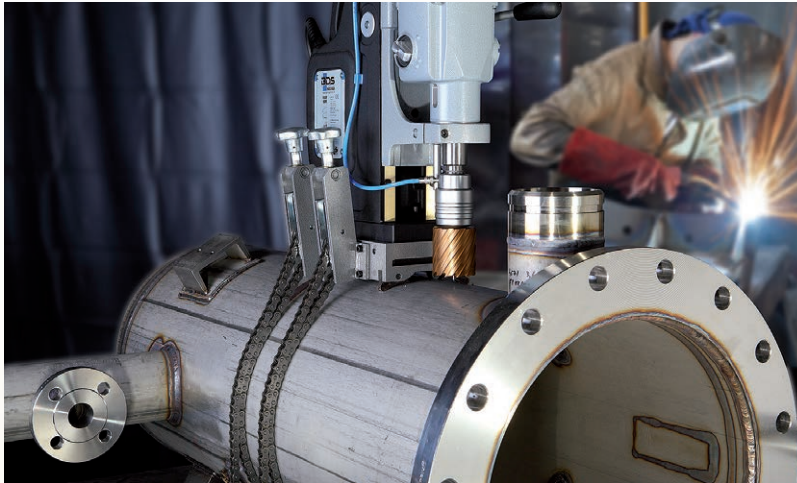
- Items are safely ejected off of Power Worker without hand contact
- Rare earth magnet cleans metal parts and shavings





# Pipe Saddle Clamp System

*Ensures safe, secure drilling of pipes and tubular material*



Ideal for applications requiring the flexibility of clamping on pipes from 3-1/4" to 20" diameter. These pipe clamp systems are flexible and easy to use. Swivelling V-blocks fit the contour of the pipe while the heavy-duty tension chains securely affix the clamps to the piece being drilled. The drilling position can be easily and safely adjusted.



PIPE SADDLE CLAMP



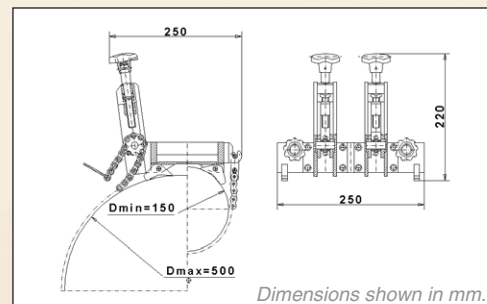
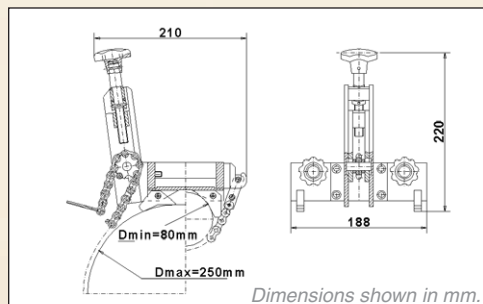
**ZRO 250 Pipe Saddle Clamp System**

Pipe diameters 3 1/4" - 10"  
Chain length: 35 1/2"  
For models: MABasic 200, MABasic 400, MABasic 450, MAB 455, MAB 485 and CSU 32RL



**ZRO 500 Pipe Saddle Clamp System**

Pipe diameters 6" - 20" (extension chain available)  
Chain length: 65"  
For models: MAB 525, MAB 825, MAB 845, CSU 50 Series, CSU 100/3RL, AB-4300-2 and HB 4400



Order No. **ZRO 001** – extension chain for ZRO 500 pipe saddle clamp.