

Hydraulic Reciprocating Saw Type 5 1220 0050



Darstellung kann vom Original abweichen

Repair Manual and Spare Parts List

REPAIR INSTRUCTION

Do not disassemble the tool until you know whether the problem is in the hydraulic power supply, the gearbox module, or the power and control (rear) module.

Then only disassemble the tool as necessary to repair as required. Keep contaminants such as dirt and grit away from the internal parts at all times.

Always determine and correct the cause of the problem prior to re-assemble. Further wear and tool failure can result, if the original cause is not corrected.

Tool module assemblies

The Reciprocating saw consists of three modules

- 1 gearbox module
- 2 motor module
- 3 valve/handle module with flow control valve.

Isolate the service problem to the circuit or one of the modules before separating the referring modules. The “Troubleshooting” section in the operation manual contains information to help isolating the problem.

Prior to disassembly

Clean the exterior of the tool.

Make sure to have all new seals so they can be replaced during reassembly. Note the orientation of seals before removal. Install new seals in the same position as the original seals.

Note: For orientation of the parts identified in the following procedures, refer to the sectional drawing and parts list located at the end of this manual.

Disassembly

Disassemble into main components valve, hydraulic motor and gearbox complete valve after loosening screws item 15. Remove screws item 8 and separate gearbox from hydraulic motor. Continue disassembling.

Hydraulikmotor

remains complete (no disassembly)

Hebelventil

remains complete (no disassembly)

Gearbox

Gearbox nuts item 94 and screws item 97 and pull out connection parts item 1-8 from gear housing item 30. Disconnect the bevel gear item 46 and bearing item 43 from shaft item 5 after loosening nut item 59. Loosen the screws item 88 and 89, remove the gear housing cover item 70 and connecting rod item 77. Remove the screws item 65, pull out the crankshaft item 51 with bearing plate item 62. Pay attention to compensating ring item 49.

Re-assembly

Before starting re-assembly check all parts for wear and replace them if necessary. Wear parts are in particular o-rings, radial shaft seals and bearings.

Gearbox

Basically the re-assembly is done in reverse order than the disassembly. Grease all sealings before re-assembly.

We recommend changing the grease in the gear housing after 300 hours of operation.

Use special-purpose gear grease only:

Consistency class (DIN 51818)	2
Saponification type	Lithium
Worked penetration	265 to 295
Temperature range	-25°C to +125°C

The proper quantity of grease is very important from the point of good lubrication and low heat generation. The grease quantities listed in the following table must comply with:

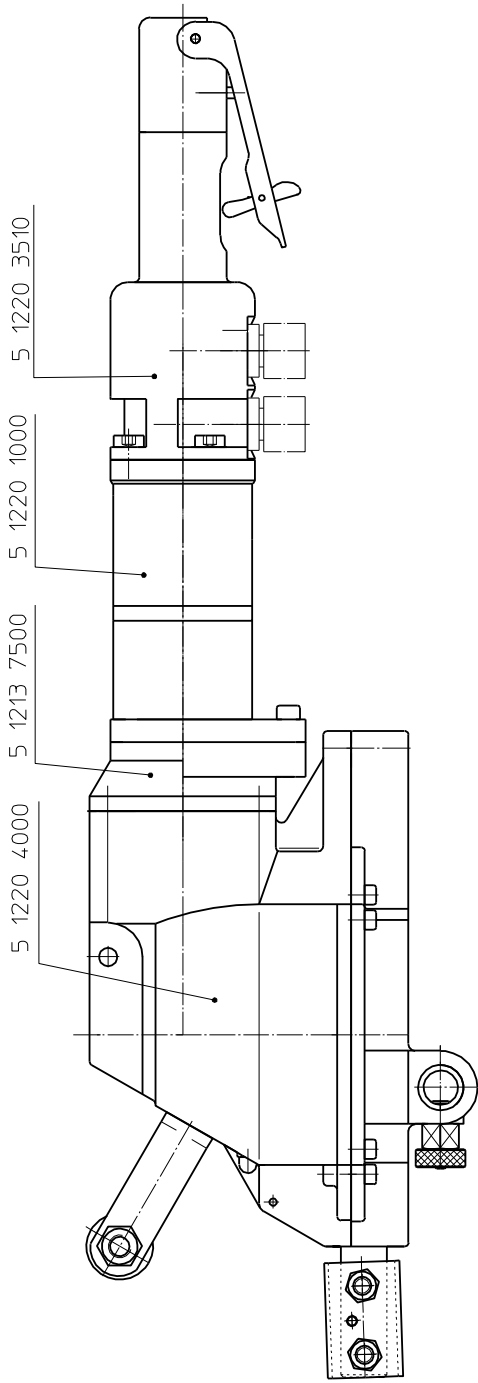
Grease	Quantity in grams
In the crank casing	100
In the bevel gears	40
In the spur gears	30

Spare Parts

Only original spare parts may be used. There is no warranty for damages and liability is disclaimed, if non-original spare parts and accessories are used.

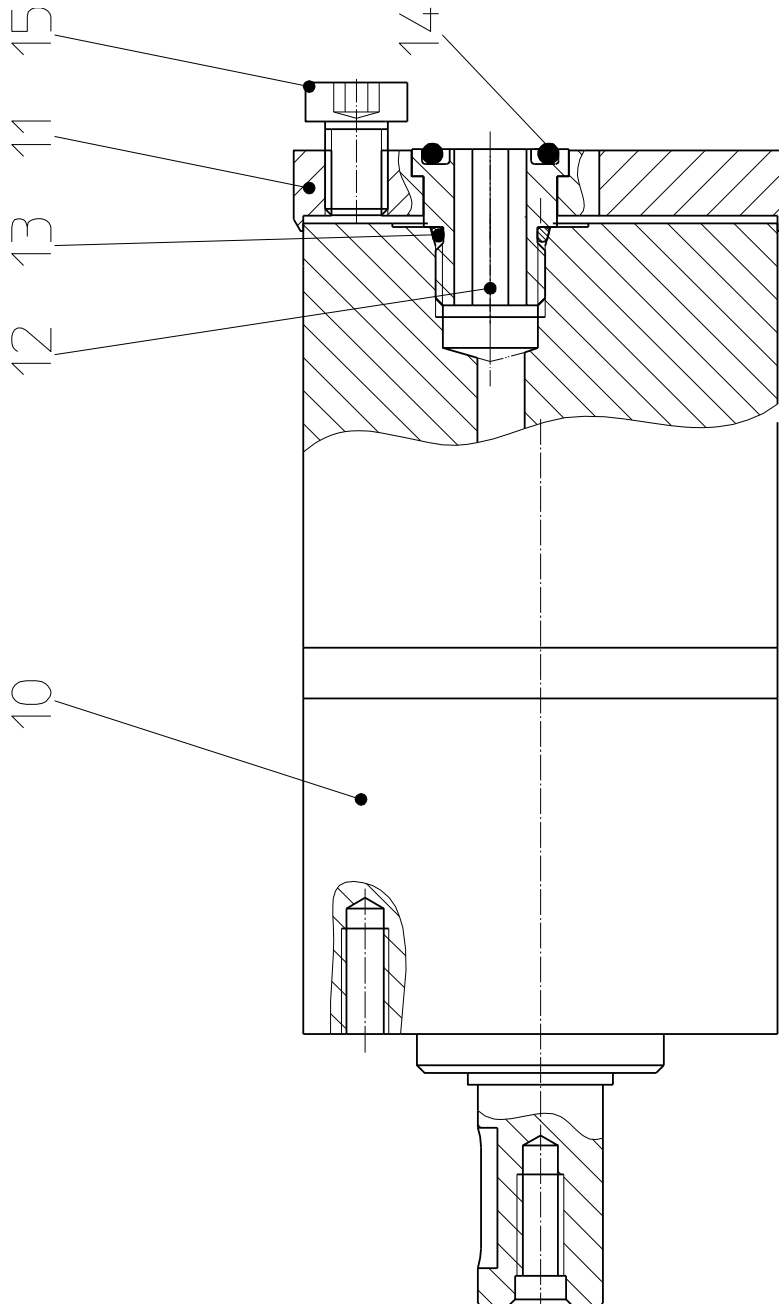


Spare Part List					
Description: Hydraulic Reciprocating Saw			Part and drawing number: 5 1220 0050		
Item	Qty.	Description	Part and drawing no.		Remarks
		Hydraulic reciprocating saw 5 1220 0050			
		consisting of:			
	1	Hydraulic reciprocating saw	5 1220 0000		
		consisting of:			
	1	Hydraulic motor	5 1220 1000		see extra list
	1	Hydraulic adaptor parts	5 1213 7500		see extra list
	1	Gearbox	5 1220 4000		see extra list
	1	Lever valve	5 1220 3510		see extra list
	1	Hydraulic hose set	2 1317 9010		
	2	Screw-in fitting	9 2124 0240		

Spare Part List	
Description:	Part and drawing number:
Hydraulic Reciprocating Saw	5 1220 0050
	



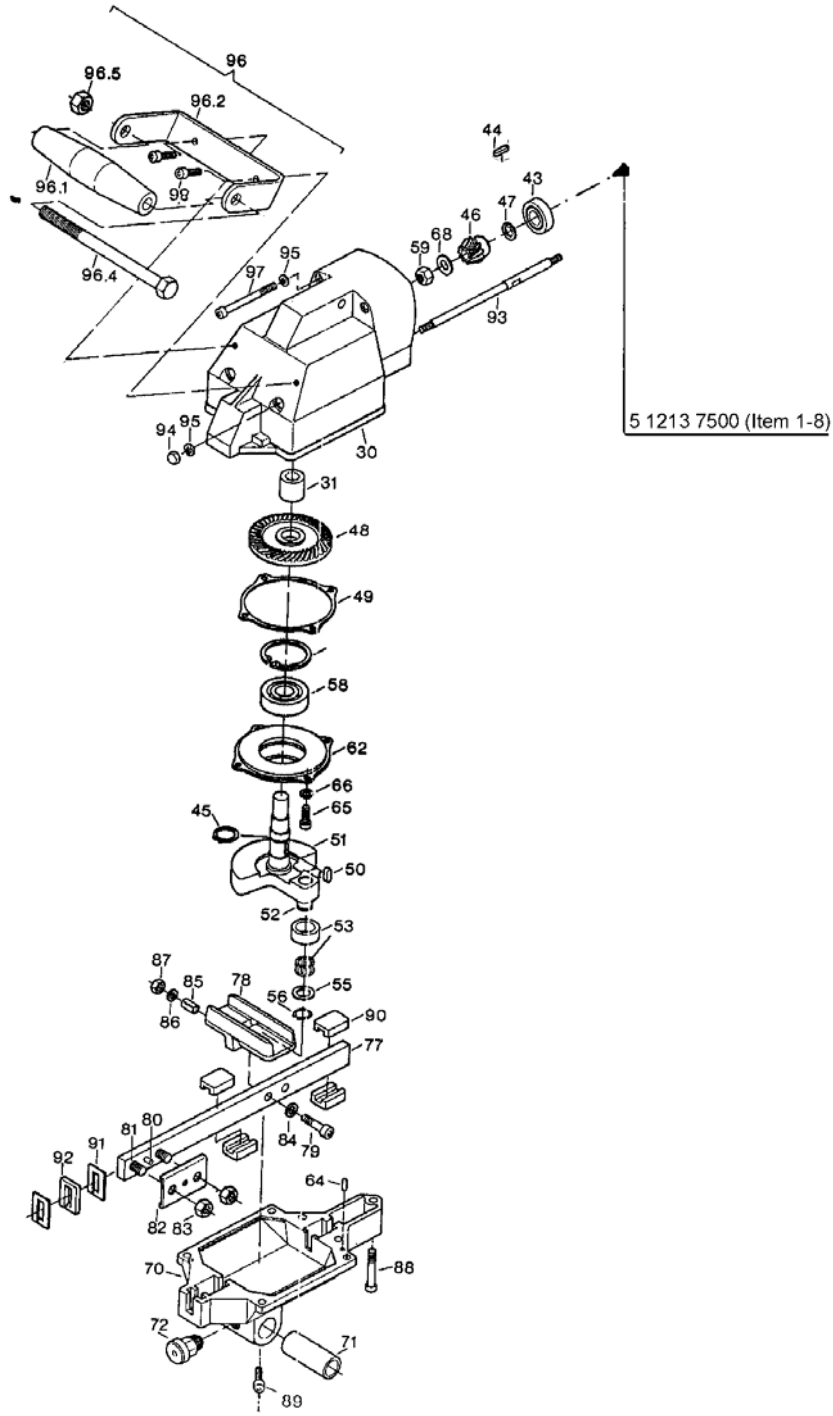
Spare Part List					
Description:				Part and drawing number:	
Hydraulic Motor				5 1220 1000	
Item	Qty.	Description	Part and drawing no.		Remarks
	1	Hydraulic motor, Assy.	5 1220 1000		
10	1	Hydraulic motor	9 5501 0010	*	
11	1	Connecting plate	5 1220 3070		
12	2	Connecting nipple	5 1220 3100		
13	2	O-Ring	9 1901 3410	*	
14	2	O-Ring	9 1901 2140	*	
15	3	Fillister-head screw	9 1112 5130		
		* Wear parts to be stored in case of continuous			
		use			

Spare Part List	
Description: Hydraulic Motor	Part and drawing number: 5 1220 1000
 <p>The drawing is a cross-sectional view of a hydraulic motor assembly. It shows a central shaft with a piston and a valve mechanism. Callouts 10 through 15 point to various components: 10 points to the main shaft, 11 to a seal or O-ring, 12 to a valve component, 13 to a housing part, 14 to a top cap or nut, and 15 to a bolt or screw. The drawing uses standard engineering conventions for hatching and section lines.</p>	

Spare Part List					
Description: Gearbox				Part and drawing number: 5 1220 4000	
Item	Qty.	Description	Part and drawing no.		Remarks
30	1	Gear casing, complete	5 1205 4010		
43	1	Groved ball bearing	9 1003 0370	*	
44	1	Feather key	9 1501 1120		
45	1	Snap ring	9 1702 0090		
46	1	Bevel gear, Assy.	5 1202 4920	*	
47	1	Compensating ring 0,1	5 1202 4140		
47	1	Compensating ring 0,3	5 1202 4340		
49	1	Compensating ring 0,1	5 1202 4150		
49	1	Compensating ring 0,3	5 1202 4350		
50	1	Feather key	9 1501 2080		
51	1	Crankshaft	5 1202 4160		
52	1	Bolt	5 1202 4170		
53	1	Bearing, Assy.	9 1025 0200	*	
55	1	Washer	5 1202 4490		
56	1	Snap ring	9 1702 0050		
58	1	Grooved ball bearing	9 1004 0270	*	
59	1	Hexagonal nut	9 1210 0010		
62	1	Bearing plate	5 1213 4220		
63	1	Snap ring	9 1703 0120		
64	2	Grooved pin	9 1626 0180		
65	4	Fillister-head screw	9 1110 3120		
66	4	Locking plate	9 3329 0010		
68	1	Washer	9 3325 0890		
70	1	Gearbox cover, Assy.	5 1202 4940		
77	1	Connecting rod	5 1202 4260		
78	1	Rocker arm	5 1202 4270		
79	2	Fillister-head screw	9 1110 4040		
80	1	Half length taper grooved pin	9 1624 0020		
81	2	Threaded pin	5 1202 4280		
82	1	Pressure plate	5 1201 7060		
83	1	Hexagonal nut	9 1203 0050		
84	4	Washer	9 3302 0020		
85	2	Adapter sleeve	9 1632 0010		
86	2	Spring washer	9 3312 0020		
87	2	Hexagonal nut	9 1203 0040		
88	1	Fillister-head screw	9 1110 3030		
89	8	Fillister-head screw	9 1110 3120		

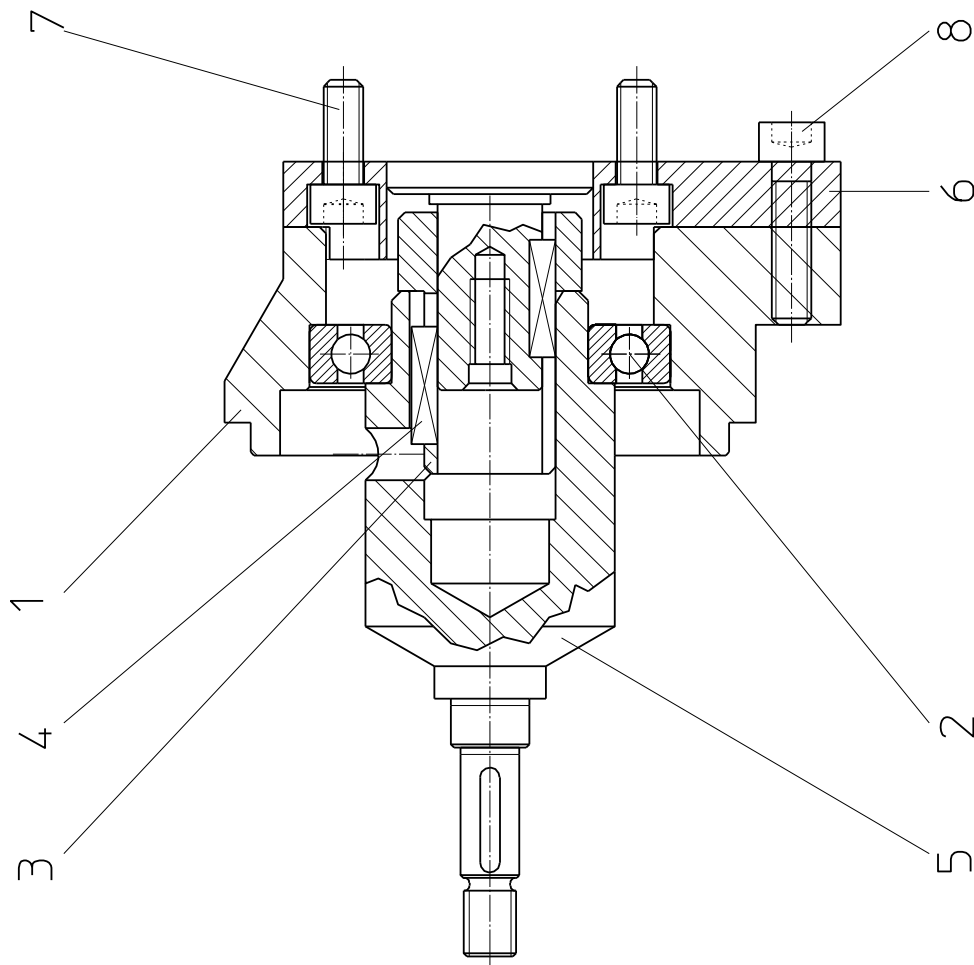
Spare Part List					
Description: Gearbox				Part and drawing number: 5 1220 4000	
Item	Qty.	Description	Part and drawing no.		Remarks
90	4	Sliding bearing	5 1206 4300	*	
91	2	Scraper	9 1902 0490	*	
92	1	Felt packing	9 1902 0500	*	
93	2	Stud bolt	9 1643 0010		
94	2	Cap nut	9 1211 0020		
95	13	Locking plate	9 3329 0010		
96	2	Handle, Assy.	5 1202 6000		
97	2	Fillister-head screw	9 1112 3090		
98	2	Fillister-head screw	9 1110 3080		
		* Wear parts, to be stored in case of continuous use!			

Spare Part List	
Description:	Part and drawing number:
Gearbox	5 1220 4000



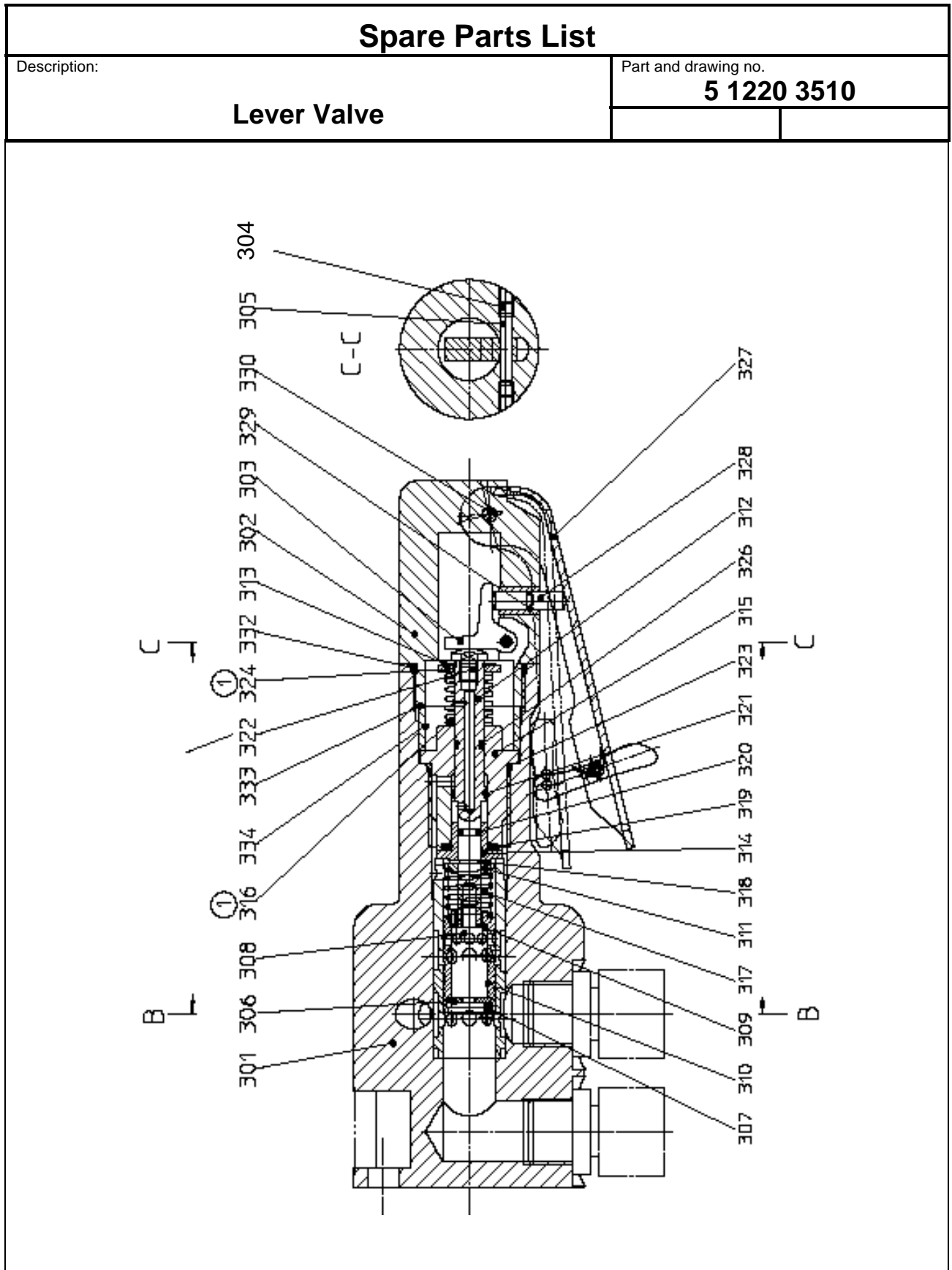
Spare Part List					
Description: Adaptor Parts, Assy.					Part and drawing no. 5 1213 7500
Item	Qty.	Description	Part and drawing no.		Remarks
	1	Hydraulic adaptor parts, Assy.	5 1213 7500		
1	1	Intermediate housing	5 1206 7110		
2	1	Grooved ball bearing	9 1002 0050	*	
3	1	Coupling	5 1206 7790		
4	1	Feather key	9 1507 9050		
5	1	Shaft	5 1206 7440		
6	1	Connecting plate	5 1206 7770		
7	5	Fillister-head screw	9 1110 4020		
8	4	Fillister-head screw	9 1110 4040		
		* Wear parts to be stored in case of continuous operation!			

Spare Parts List	
Description: Adaptor Parts	Description: 5 1213 7500



Spare Part List					
Description: Lever Valve				Part and drawing number: 5 1220 3510	
Item	Qty.	Description	Part and drawing no.		Remarks
301	1	Valve housing, Assy.	5 1220 3520		
302	1	End piece, Assy.	5 1220 3530		
303	1	Lever	5 1220 3560		
304	2	Threaded pin with inner hexagon	9 1140 2030		
305	1	Cylinder pin	9 1619 0150		
306	1	Gate d=3.1 mm 10 l/min	5 1220 3040		
307	1	Snap ring	9 1703 0260		
308	1	Fillister-head screw	9 1110 2090		
309	1	Washer	9 3302 0150		
310	1	Governor piston valve	2 1317 3320		
311	1	Spring washer	2 1317 3070		
312	1	Locking plate	5 1220 3110		
313	1	Snap ring	9 1706 0140		
314	1	Sleeve	5 1220 3540		
315	1	Guide	5 1220 3610		
317	1	Pressure spring	9 1803 1700		
318	1	Locking plate	9 1706 0180		
319	1	O-Ring	9 1901 3290	*	
320	1	O-Ring	9 1901 9800	*	
321	1	O-Ring	9 1901 2550	*	
322	1	Threaded pin	9 1148 3030		
323	1	O-Ring	9 1901 6020	*	
326	1	O-Ring	9 1901 2080	*	
327	1	Valve lever, Assy.	5 5010 3940		
328	1	Pusher pin	5 1220 3550		
329	1	O-Ring	9 1901 2020	*	
330	1	Grooved pin	9 1627 0090		
331	2	Locking screw	9 1174 0010		
332	1	O-Ring	9 1901 2380	*	
333	2	Adjusting washer	9 3331 1740		
*Wear parts to be stored in case of continuous use!					

Spare Part List					
Description:					Part and drawing number:
Lever Valve					5 1220 3510
Item	Qty.	Description	Part and drawing no.		Remarks
333	2	Adusting washer	9 3325 1130		
333	1	Adjusting washer	9 3331 1730		
334	1	Spacer bushing	5 1220 3580		
390	1	Safety valve, Assy.	5 1220 3300		item 391-399
391	1	Locking screw	5 1220 3210		
392	1	Sleeve	5 1220 3220		
393	1	Threaded pin with inner hexagon	9 1140 3010		
394	1	Cylinder pin	9 1619 0940		
395	1	Pressure spring	9 1803 3480		
396	1	Steel ball	9 1017 0050		
397	1	O-ring	9 1901 2190	*	
398	1	O-ring	9 1921 2460	*	
399	1	O-ring	9 1901 2260	*	
		* Wear parts to be stored in case of continuous use!			



Spare Parts List

Description:

Lever Valve

Part and drawing no.

5 1220 3510

