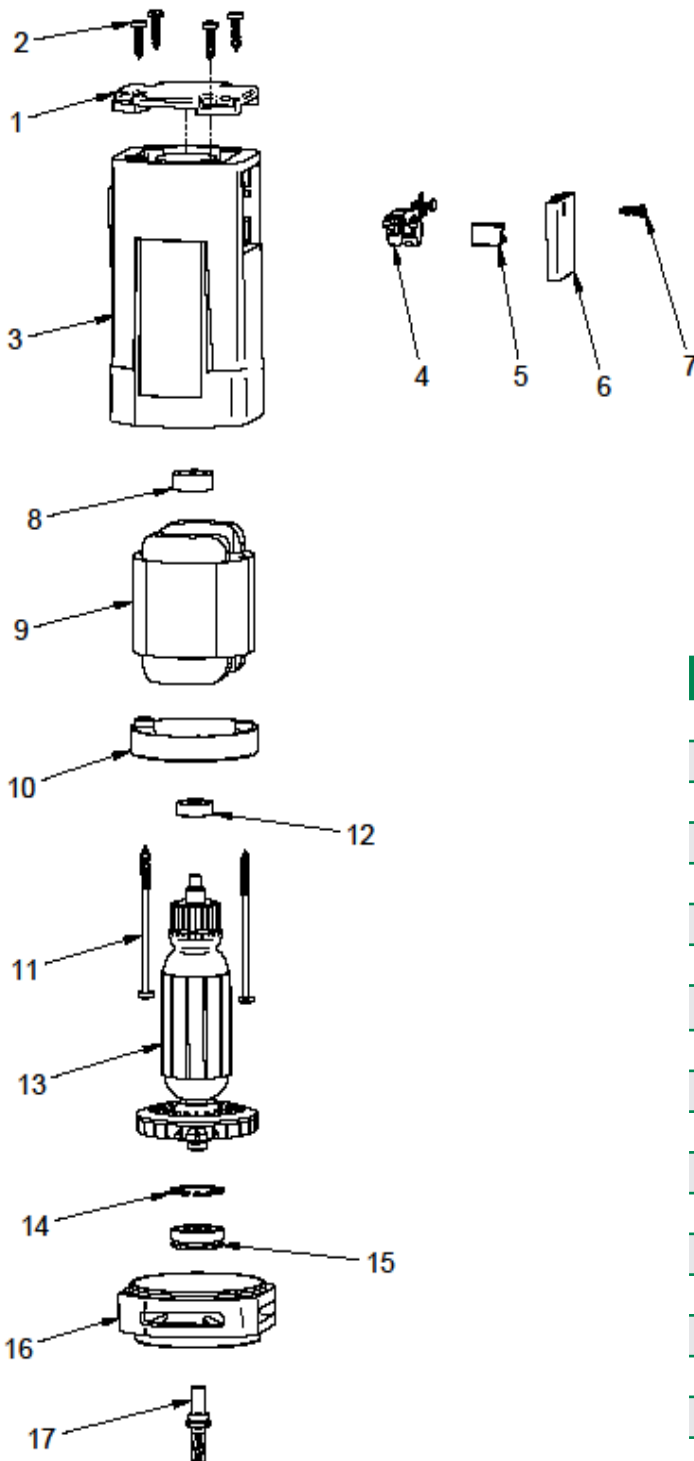


PLEASE SPECIFY TOOL MODEL # WHEN ORDERING PARTS

<b>PARTS BREAKDOWN</b>	<b>Model #:</b> MAB 150	<b>Bulletin #:</b> 02-2011
<b>PARTS LISTING</b>	<b>Description:</b> Portable Magnetic Drill	<b>Prepared By:</b> SCW
<b>WIRING DIAGRAM</b>	<b>Date:</b> 11/15/2011	



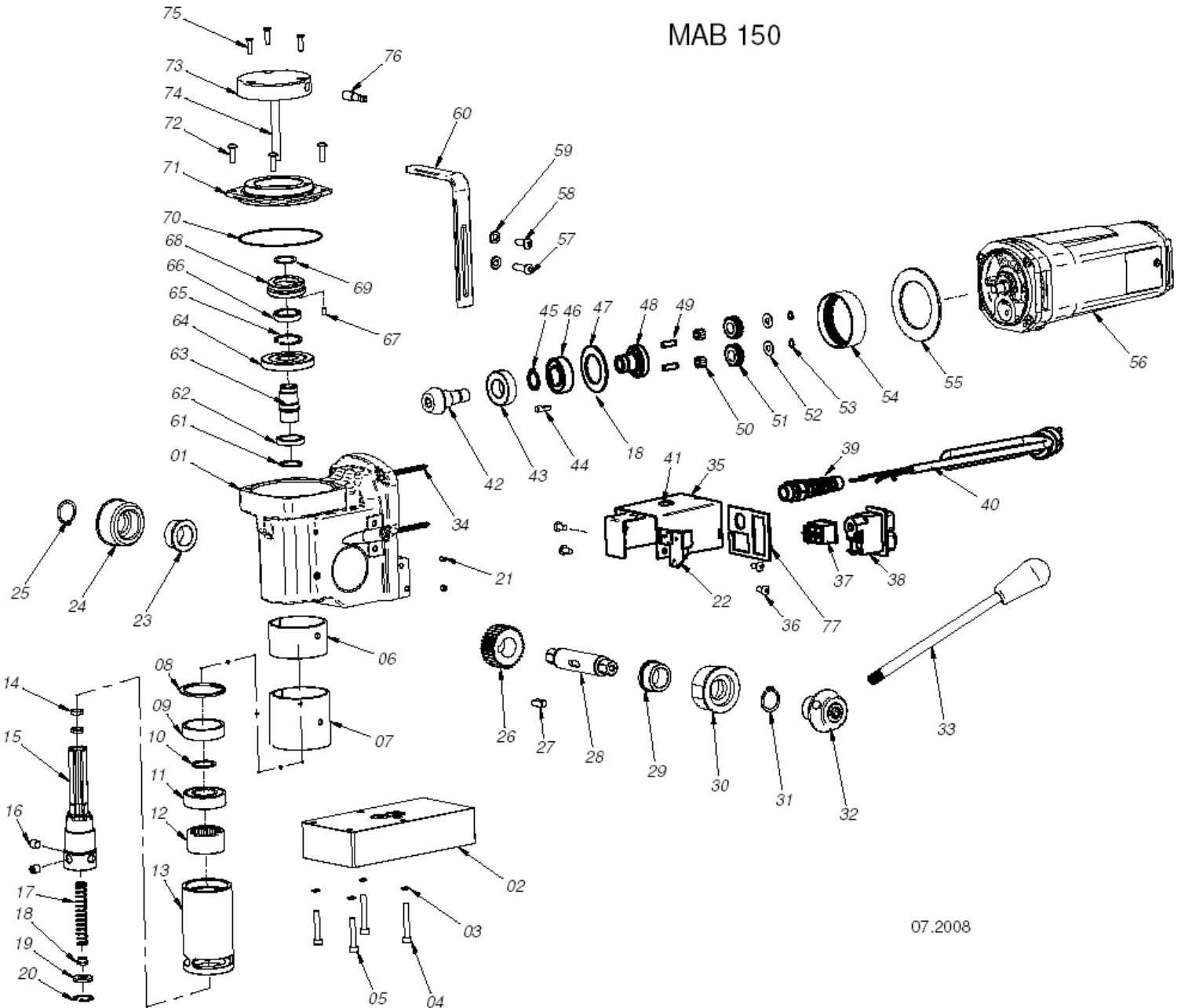
**MAB 150 MOTOR PARTS LIST**

Pos. #	Part #	Description
1	50 1324 1	Cap for motor housing
2	50 1325 1	Screw M5 x 20
3	50 1297 1	Motor housing
4	50 1321 1	Carbon brush holder compl.
5	50 1322 1	Carbon brush 6,4 x 12,5 x 19
6	50 1319 1	Cap for carbon brush
7	50 1320 1	Screw M4 x 13
8	50 1318 1	Bearing cap 22 x 9
9	50 1316 1	Field coil 220-240V
9A	50 1317 1	Field coil 110V
10	50 1315 1	Cap for field coil
11	50 1313 1	Screw 4,8 x 85
12	50 1314 1	Ball bearing 627 ZZ C3
13	60 1291 1	Armature 220-240V
13A	60 1286 1	Armature 110V
14	50 1307 1	Circlip ring inside 32W
15	50 1308 1	Ball bearing 6201 2RSH C3
16	60 1275 1	Shield plate
17	60 1250 1	Armature gear wheel

PLEASE SPECIFY TOOL MODEL # WHEN ORDERING PARTS

<b>PARTS BREAKDOWN</b>	<b>Model #:</b> MAB 150	<b>Bulletin #:</b> 02-2011
<b>PARTS LISTING</b>	<b>Description:</b> Portable Magnetic Drill	<b>Prepared By:</b> SCW
<b>WIRING DIAGRAM</b>	<b>Date:</b> 11/15/2011	

## MAB 150 STAND BREAKDOWN



**PLEASE SPECIFY TOOL MODEL # WHEN ORDERING PARTS**

<b>PARTS BREAKDOWN</b>	Model #: MAB 150	Bulletin #: 02-2011
<b>PARTS LISTING</b>	Description: Portable Magnetic Drill	Prepared By: SCW
<b>WIRING DIAGRAM</b>	Date: 11/15/2011	

### MAB 150 STAND PARTS LIST

Pos. #	Part #	Description
1	60 1231 1	Housing
2	60 1232 1	Magnet (electric)
3	60 1233 1	Spring washer 5,1
4	60 1234 1	Screw M5 x 8 SHCS
5	60 1235 1	Screw M5 x 30
6	60 1236 1	Gear jack 2
7	60 1237 1	Gear jack 1
8	60 1238 1	Circlip ring inside 42W
9	60 1239 1	Distance sleeve
10	60 1240 1	Circlip ring outside 20Z
11	50 1228 1	Ball bearing 6004 2RS
12	60 1242 1	Needle bearing RHNA 303720
13	60 1243 1	Shaft for gear wheel
14	60 1244 1	Sealing ring
15	60 1245 1	Spindle
16	60 1018 1	Set screw M8 x 8
17	60 1247 1	Spring for arbor
18	60 1248 1	Washer
19	60 1249 1	Sealing washer
20	50 1338 1	Circlip ring inside 19W
21	60 1251 1	Set screw M6 x 8
22	60 1246 1	PC board 230V
22 A	60 1255 1	PC board 110V
23	60 1253 1	Self-lubricating jack
24	60 1254 1	Holder for guide shaft
26	60 1256 1	Gear wheel 32Z
27	60 1257 1	Spring 6 x 6 x 16
28	60 1258 1	Shaft
32	60 1262 1	Head for gear wheel
33	60 1263 1	Handle rod with knob
34	60 1264 1	Screw 5 x 60
35	60 1265 1	Electronic bracket
36	60 1266 1	Screw M5 x 10
37	70 1014 2	Magnet switch

Pos. #	Part #	Description
38	70 1080 2	Actuator 230V
38A	70 1093 1	Actuator 110V
39	70 1003 1	Mains cable gland PG 11
40	70 1004 2	Connection cable compl. with plug
40A	70 1004 2	Connection cable 220-240V with GB-plug
40B	70 1041 1	Connection cable 110V (plug on demand)
41	60 1271 1	Ring for electronic bracket
42	60 1241 1	Pinion shaft T=11
43	60 1273 1	Ball bearing 6003
44	60 1274 1	Stop pin
46	60 1276 1	Ball bearing 6004
47	60 1277 1	Shaft for gear box washer 55 x 1,8
48	60 1278 1	Ring gear
49	60 1279 1	Support pin 6 x 19
50	60 1280 1	Needle bearing 2,5 x 7,8
51	60 1281 1	Pinion T=27
52	60 1282 1	Washer 14 x 6,1 x 1
53	60 1283 1	Circlip ring outside 6Z
54	60 1284 1	Ring T=62
55	60 1285 1	Washer
56	60 0150 1	Motor compl. 230V
56A	60 0151 1	Motor compl. 110V
57	60 1287 1	Screw M6 x 20
58	60 1288 1	Screw M6 x 16
59	60 1289 1	Washer 6,4
60	60 1290 1	Carrier handle
61	60 1192 1	Circlip ring outside 30Z
62	60 1292 1	Ball bearing 6806 LLU
63	60 1293 1	Bevel gear shaft
64	60 1294 1	Supporting disc
65	60 1295 1	Circlip ring inside 37W

**PLEASE SPECIFY TOOL MODEL # WHEN ORDERING PARTS**

<b>PARTS BREAKDOWN</b>	<b>Model #:</b> MAB 150	<b>Bulletin #:</b> 02-2011
<b>PARTS LISTING</b>	<b>Description:</b> Portable Magnetic Drill	<b>Prepared By:</b> SCW
<b>WIRING DIAGRAM</b>	<b>Date:</b> 11/15/2011	

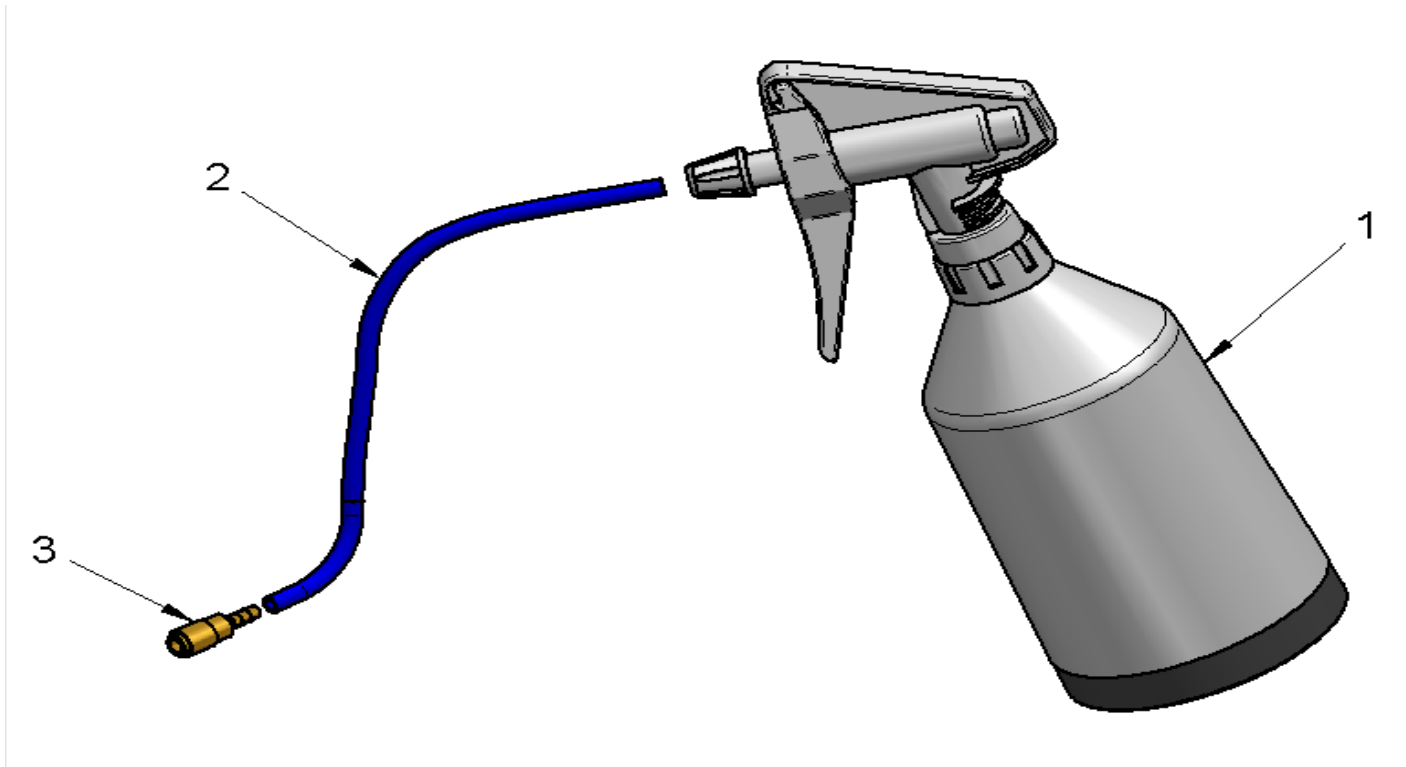
**MAB 150 STAND PARTS LIST - continued**

<b>Pos. #</b>	<b>Part #</b>	<b>Description</b>
66	60 1296 1	Ball bearing 61805 RS
67	60 1297 1	Gewindestift M5 x 10
68	60 1298 1	Cover for bevel gear
69	60 1299 1	Circlip ring 25Z Type A
70	60 1252 1	O-Ring 80 x 1,3
71	60 1259 1	Cover for bearing
72	60 1260 1	Screw M5 x 16
73	60 1261 1	Cover for gear box
74	60 1267 1	Tube for coolant supply
75	60 1268 1	Screw M4 x 16 FHSCS
76	ZSS 200N	Brass Nipple

**PLEASE SPECIFY TOOL MODEL # WHEN ORDERING PARTS**

<b>PARTS BREAKDOWN</b>	<b>Model #:</b> MAB 150	<b>Bulletin #:</b> 02-2011
<b>PARTS LISTING</b>	<b>Description:</b> Portable Magnetic Drill	<b>Prepared By:</b> SCW
<b>WIRING DIAGRAM</b>	<b>Date:</b> 11/15/2011	

### MAB 150 INTERNAL LUBRICATION



### INTERNAL LUBRICATION PARTS LIST

Pos. #	Part #	Description
1	ZKK 150	Oil pump bottle
2	ZKK 150S	Cooling tube
3	ZSS 200K	Quick Coupling

**PLEASE SPECIFY TOOL MODEL # WHEN ORDERING PARTS**

<b>PARTS BREAKDOWN</b>	<b>Model #:</b> MAB 150	<b>Bulletin #:</b> 02-2011
<b>PARTS LISTING</b>	<b>Description:</b> Portable Magnetic Drill	<b>Prepared By:</b> SCW
<b>WIRING DIAGRAM</b>	<b>Date:</b> 11/15/2011	

## MAB 150 WIRING DIAGRAM

