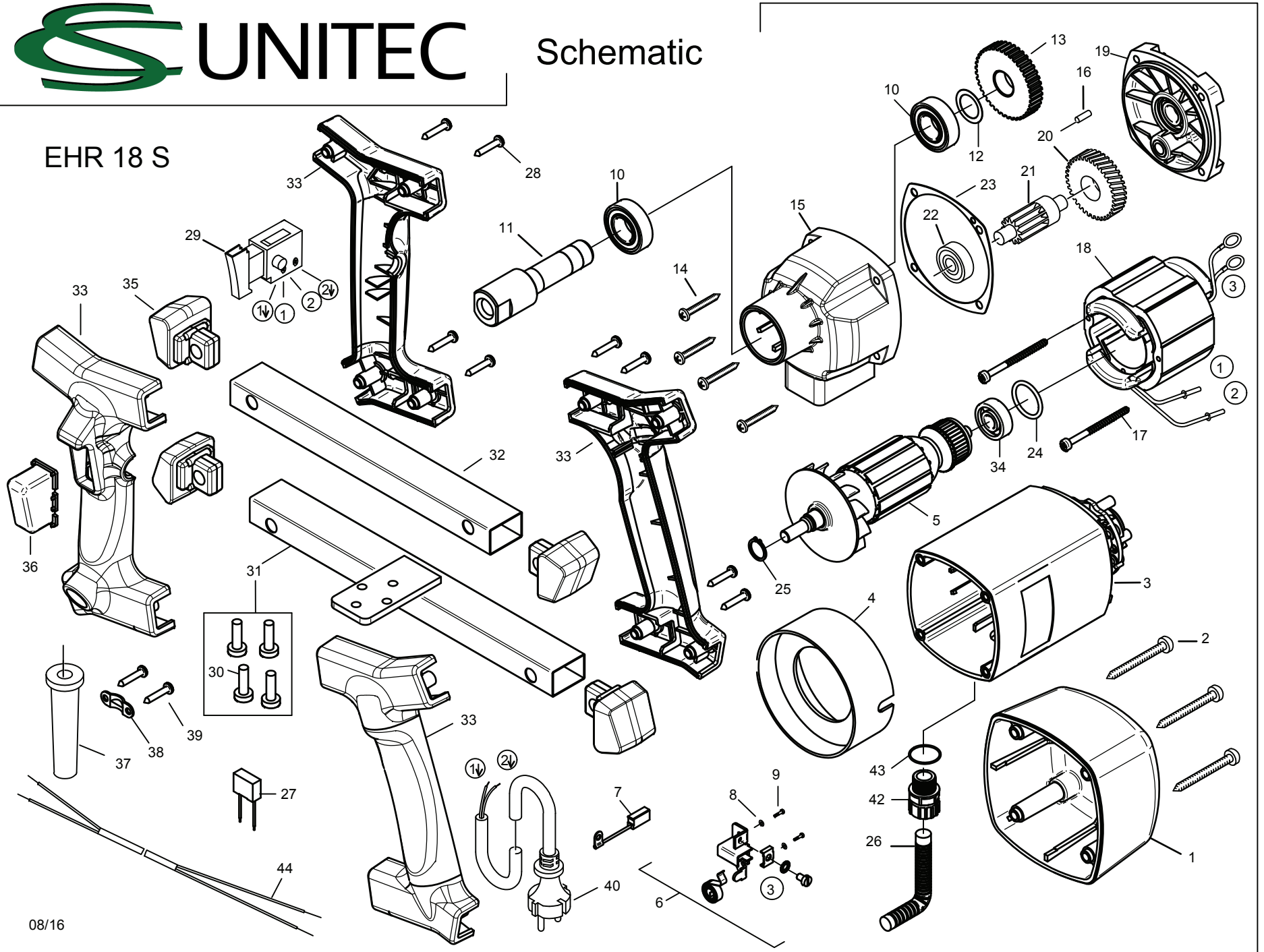


EHR 18 S



08/16

EHR 18 S - 120 V USA

0711R000

5	rotor complete	77118100	1		29	switch	80600140	1	
18	stator complete	7731F150	1		40	connecting cable	80600085	1	

EHR 18 S - 230 V

0711P000

No.	Description	Order No.	Pcs		No.	Description	Order No.	Pcs	
1	cap	80900182	1		23	gearbox seal	82000503	1	
2	self tapping screw HC 4,8x50	80201284	4		24	o-ring 22x2,5	83000036	1	
3	motor housing	7711P200	1		25	locking ring 10/1	80201305	1	
4	air guiding ring	80900017	1		26	hose	7B711257	1	
5	rotor complete	77117100	1		27	anti parasite condenser	80500010	1	
6	brush holder	80201196	2		28	pt-screw 50x30	80201411	8	
7	carbon brush 6,3x10x18	80700013	2		29	switch	80600135	1	
8	lock washer B4	80201385	4		30	screw 6x16	80201525	4	
9	self tapping screw CM4x12	80201180	4		31	side plate 1 set	7711P59S	1	
10	grooved ball bearing 6003 2RS	80410043	2		32	side plate 2	7711P592	1	
11	work spindle	77010420	1		33	handle tube S	7711P26U	1	
12	fitting washer 17/24x0,2	80200507	1		34	grooved ball bearing 608 2Z	80410011	1	
13	spindle wheel	74010430	1		35	rubber cup	77420594	4	
14	self tapping screw HC4,8x38	80201283	4		36	cap guard	77420365	1	
15	gearbox housing black	777C5400	1		37	cable grommet	83000004	1	
16	notched pin plug 4x12	80200582	1		38	wire locking flange	85000020	1	
17	self tapping screw HC 3,9x60	80201266	2		39	self tapping screw HC 4,2x13	80201270	2	
18	stator complete	7731C150	1		40	connecting cable	80600470	1	
19	end shield of gearing green	80901029	1		41				
20	intermediate wheel	74010470	1		42	connection PG 9	80600180	1	
21	pinion shaft	74010490	1		43	o-ring 9,6x2,4	83000037	1	
22	grooved ball bearing 608	80410010	1		44	interconnecting wire	80600072	1	

08/16