



**PLEASE SPECIFY TOOL MODEL # WHEN ORDERING PARTS**

<b>PARTS BREAKDOWN</b>	<b>Model #:</b> 2 1327 0010	<b>Bulletin #:</b> 08-2017
<b>PARTS LISTING</b>	<b>Description:</b> Hydraulic Core Drill	<b>Prepared By:</b> SCW
<b>WIRING DIAGRAM</b>	<b>Date:</b> 4/12/2017	

**2 1327 0010 Core Drill**

Position	QTY	Description	Part #
101	1	Motor housing	2 1327 1910
102	1	Output shaft	2 1317 1050
103	1	Spur gear	2 1317 4470
104	1	Shaft sealing	9 1925 0450
105	1	Snap ring	9 1706 0110
106	1	Thrust washer	9 1024 0360
107	1	Thrust bearing	9 1024 0370
108	1	Shaft spacer	9 5501 0040
109	1	Spool drive	9 5501 0180
110	1	Drive	9 5501 0190
111	3	O-Ring	9 1921 1240
112	1	Spacer plate	9 5501 0070
113	1	Geroler assembly	9 5501 0200
114	1	Spool	9 5501 0090
115	1	Bearing	9 1029 0530
116	1	Cover	2 1327 1130
117	1	Bearing ring	2 1317 4460
118	1	Snap ring	9 1703 0040
119	1	Needle bearing	9 1014 0100
120	1	Snap ring	9 1703 0160
121	5	Fillister-head screw	9 1110 4200



**PLEASE SPECIFY TOOL MODEL # WHEN ORDERING PARTS**

<b>PARTS BREAKDOWN</b>	<b>Model #:</b> 2 1327 0010	<b>Bulletin #:</b> 08-2017
<b>PARTS LISTING</b>	<b>Description:</b> Hydraulic Core Drill	<b>Prepared By:</b> SCW
<b>WIRING DIAGRAM</b>	<b>Date:</b> 4/12/2017	

**2 1327 0010 Core Drill**

Position	QTY	Description	Part #
		Gearshift Lever Assembly	2 1315 4960
		Countershaft Assembly for Model 2 1327 0010	2 1327 4920
		Water Hose for Model 2 1327 0010	9 3606 0370
416 + 430		Pin	9 1619 1300
210		Connecting Nipple	9 2126 0150
211		Seal	256 982
212		Elbow	9 2209 0130
213		Nozzle	9 2109 0050
214		Hose Clamp	9 2104 0010
215		Hose	9 3602 0280
216		Valve Ring #52662&65205 #9 2126 0140 & 9 2126 0120	251 648
217		Stop Valve	9 2014 0900
218		Brass Nipple	251 650
219		PVC Quick Connect Coupling for 3/4" Hose	100 000
401		Bearing Housing	2 1327 4010
402		See # 2 1315 4270	256 749
403		Gear Shaft	2 1317 4170
404		Gear	253 895
405		Gear	253 896
406		Gear	253 897
407		Spur Gear	2 1317 4430
408		Washer Ring	259 158
409		Spring Washer	255 469
410		Nut	2 1327 0120
411		Compression Washer, Core Drill	253 164
412		Ball Bearing	9 1027 0530
413		C-Clip	105 546
414		Distance Ring	253 165
414		Spacer	253 116



*PLEASE SPECIFY TOOL MODEL # WHEN ORDERING PARTS*

<b>PARTS BREAKDOWN</b>	<b>Model #:</b> 2 1327 0010	<b>Bulletin #:</b> 08-2017
<b>PARTS LISTING</b>	<b>Description:</b> Hydraulic Core Drill	<b>Prepared By:</b> SCW
<b>WIRING DIAGRAM</b>	<b>Date:</b> 4/12/2017	

**2 1327 0010 Core Drill**

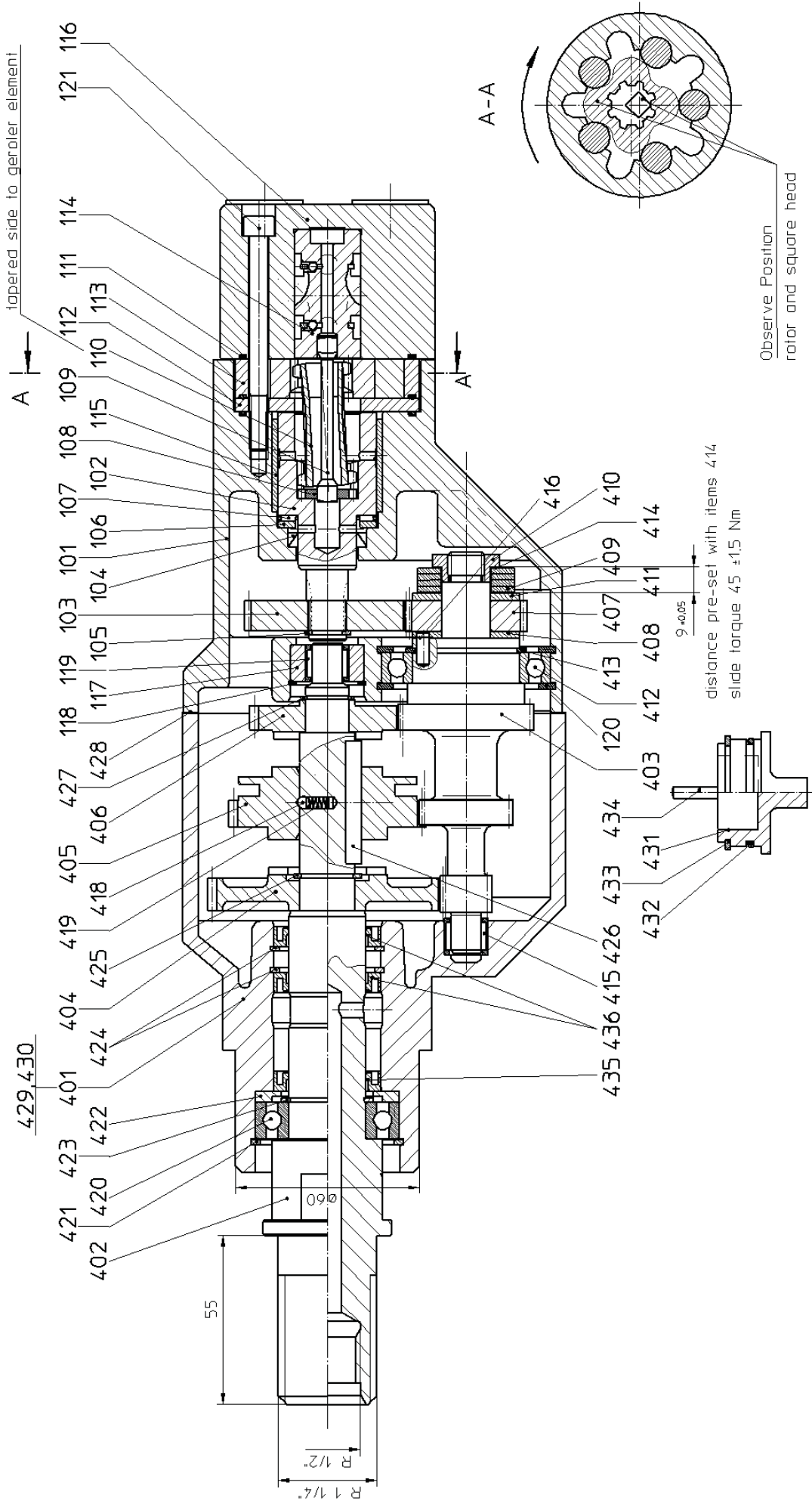
Position	QTY	Description	Part #
415	1	Needle Cage	242 942
418	1	Ball	254 048
419	1	Spring	254 049
420	1	Bearing	223 158
421	1	C-Clip	111 392
422	1	Ring	254 101
423	1	C-Clip	223 344
424	2	Retaining Ring	9 1703 0110
425	1	C-Clip	256 115
428	1	Seal	2 1317 1190
429	1	Screw	9 1110 3110
431	1	Knob	253 910
432	1	O Ring (see P/N 237 469) 4-06-12-060-00-1	9 1901 3130
433	1	c-Clip	255 648
434	1	Dowel Pin	9 1637 2110
435		Fliter Bags, Doulbe wall 5/pack	252 222
436	1	Ring #41377, # 9 1905 1230	253 219

**PLEASE SPECIFY TOOL MODEL # WHEN ORDERING PARTS**

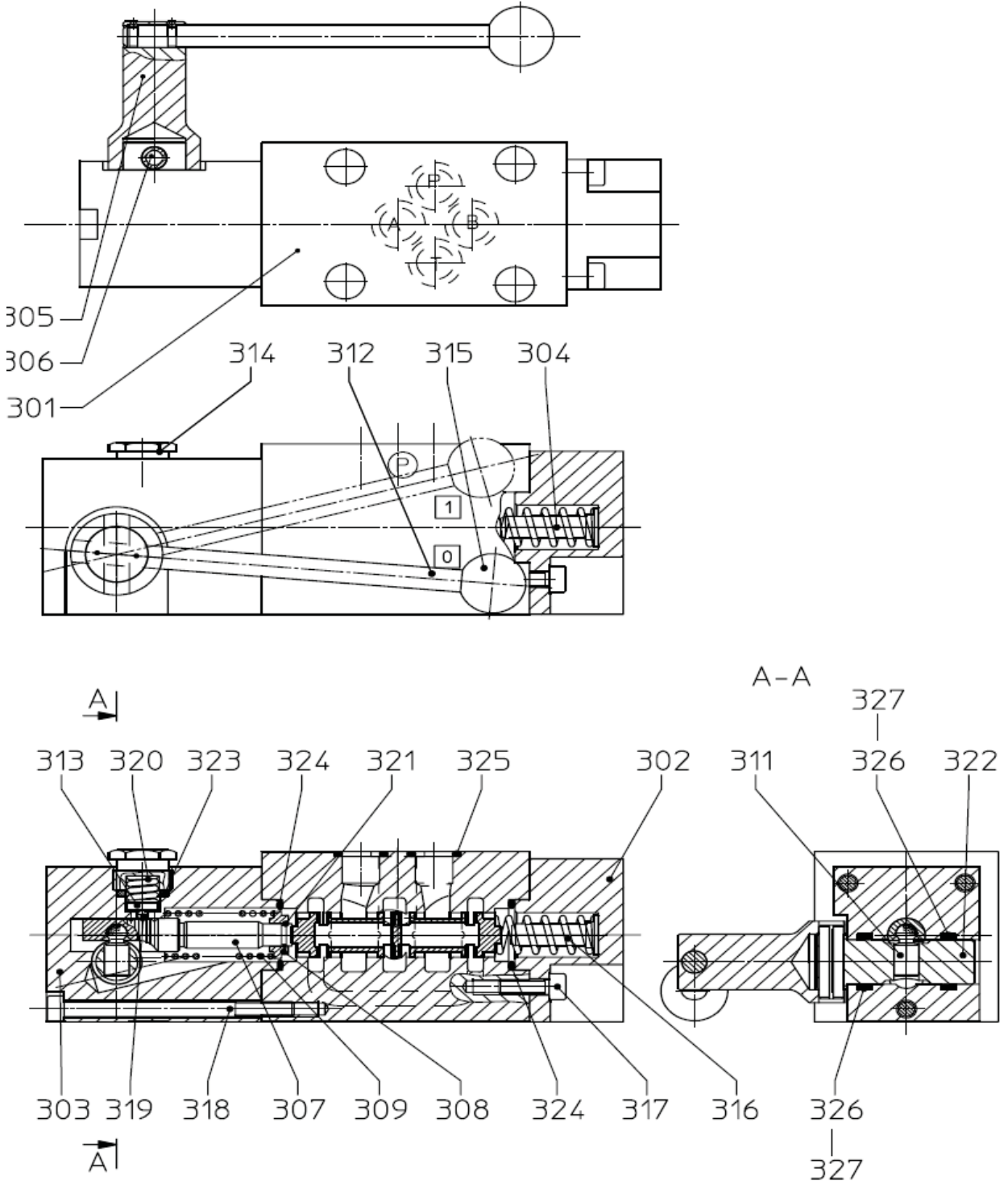
<b>PARTS BREAKDOWN</b>	Model #: 2 1327 0010	Bulletin #: 08-2017
<b>PARTS LISTING</b>	Description: Hydraulic Core Drill	Prepared By: SCW
<b>WIRING DIAGRAM</b>	Date: 4/12/2017	

### 2 1327 3930 Head Assembly

Position	QTY	Description	Part #
		Head Assembly	2 1327 3930
301	1	Valve Housing Assy.	2 1327 3910
302	1	Cover	2 1327 3020
303	1	Head	2 1327 3030
304	1	Bolt	2 1327 6110
305	1	Shaft	2 1327 3200
306	1	Clamping Sleeve	9 1630 0410
307	1	Pin	2 1327 3070
308	1	Plate	2 1327 3080
309	1	Pressure Spring	9 1803 4830
311	1	Control Device	2 1327 3110
312	1	Lever	2 1327 3120
313	1	Pressure Washer	2 1327 3130
314	1	Plug	2 1327 3140
315	1	Handle Knob	9 3901 0160
316	1	Pressure Spring	9 1803 4840
317	4	Fillister-Head Screw	9 1110 2070
318	3	Fillister-Head Screw	9 1110 2080
319	1	Ball, Steel	9 1017 0550
320	1	Pressure Spring	9 1803 4850
321	1	Snap Ring	9 1710 0160
322	1	Shaft	2 1327 3220
323	1	Sealing Ring	2 1327 3230
324	2	O-Ring	9 1901 5250
325	4	O-Ring	9 1921 2840
326	2	O-Ring	9 1901 2940
327	2	Pressure Ring	9 1919 0390



### Valve Assembly



2 1327 0010 Core Drill

