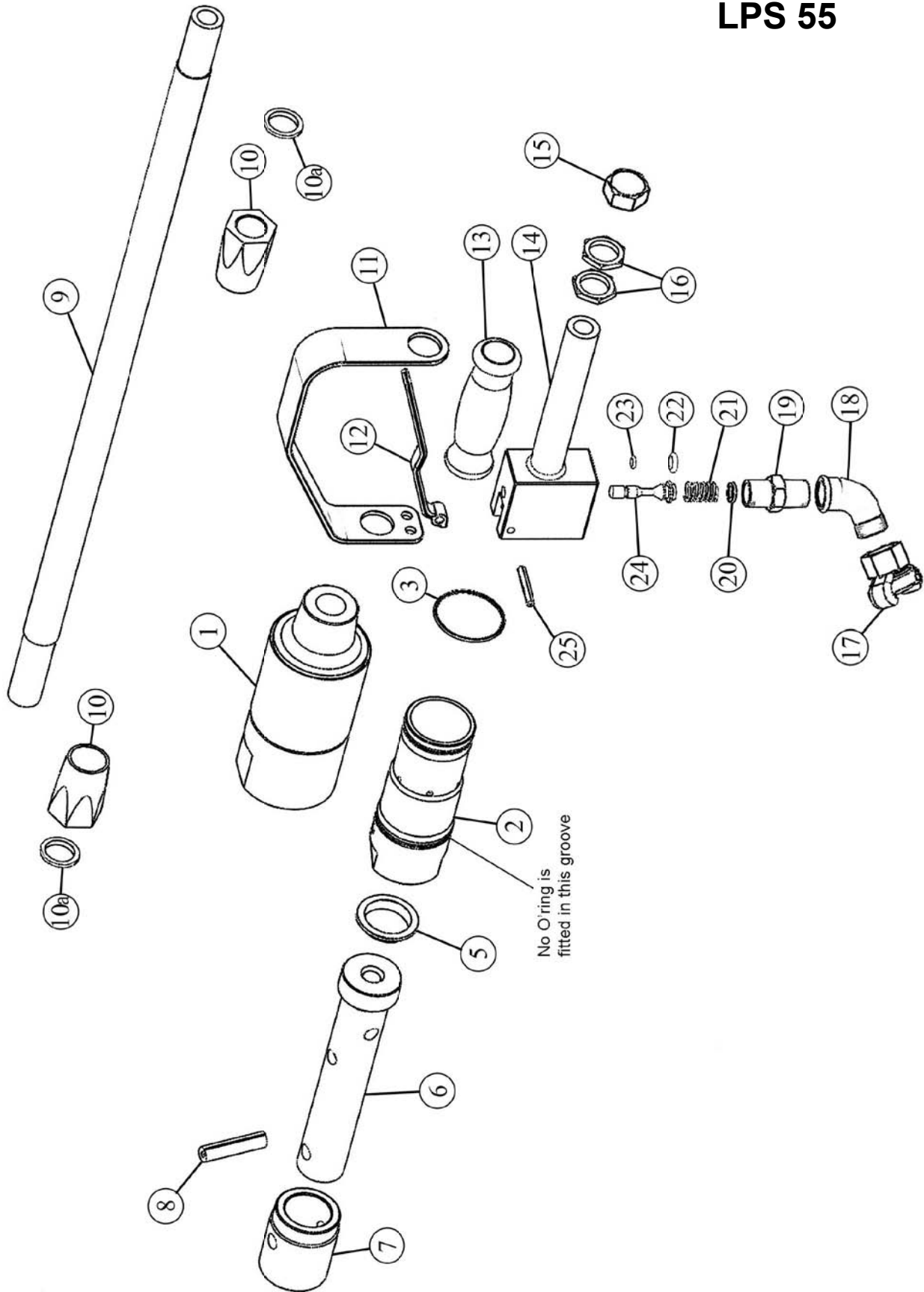


EXPLODED VIEW

LPS 55



PART NUMBERS

LPS 55

Item No	Part No	Description	Item No	Part No	Description
1	411.5011	Body	17	843.0765	3/4" Claw coupling
2	613.5001	Cylinder	18	819.5020	90° Adapter
3	809.6599	Cylinder O'Ring (Small)	19	627.5011	Adaptor (Spring seat)
5	829.5001	Wiper Seal	20	627.5012	Spring Seat
6	612.5005	Piston (Pin Fit)	21	712.5001	Valve Spring
	612.5001	Piston (Screw Fit)	22	809.5599	Valve Stem Seat O'Ring
7	426.5359	TCT tipped 5 point Scabblers Head (Pin fit)	23	809.0069	Valve Stem Seal O'Ring
	N/A	TCT tipped Cruciform Scabblers Head (Pin fit)	24	618.5025	Valve Stem
	426.5051	TCT tipped 5 point Scabblers Head (Screw fit)		448.5025	Valve Stem - including O'Rings
	426.5052	TCT tipped Cruciform Scabblers Head (Screw fit)	25	813.0636	Roll Pin
8	813.1050	Spirol Pin (Pin fit heads)			
9	624.5011	Main Shaft			Not shown in exploded view
10	625.5012	Locknut (Main shaft)		809.6499	Piston O'Ring (Screw fit)
10a	810.9003	Sealing Washer		450.5001	100 x 100 Compactor Foot (Screw fit)
11	665.5011	Trigger Guard		450.5011	100 x 100 Compactor Foot (Pin fit)
12	649.5011	Throttle Lever		450.5003	127 x 152mm Compactor Foot (Screw fit)
13	822.2000	Rubber Grip		450.5013	127 x 152mm Compactor Foot (Pin fit)
14	422.5005	Valve Body		450.5006	100 x 200mm Compactor Foot (Screw foot)
15	634.5015	Blanking Cap		450.5016	100 x 200mm Compactor Foot (Pin foot)
16	625.5011	Locknut (Valve body handle)		450.5007	127 Diameter Compactor Foot (Screw fit)
				450.5017	127 Diameter Compactor Foot (Pin fit)
				852.0812	Trigger Guard Screw

TROUBLE SHOOTING		
Poor performance or lack of power	Low air pressure.	Ensure that the air pressure is correct at 90psi, max 100psi.
	If tool has been left for some time without use, the oil may dry out slightly causing a sticky residue.	Strip tool down and re-oil.
	Tool worn out, can you feel excessive side ways movement between the piston and cylinder bore.	Replace the piston and cylinder, along with a new scraper seal.
	Cutterhead worn out.	Replace cutterhead
	Applying too much down force.	Only apply sufficient down force to stop the tool from bouncing.
Tool continues to run with trigger released	Valve seal may have become dislodged through the tool being disconnected with the trigger in the open position.	Ensure that the trigger has not been taped or wired in the open position. Do not use quick release couplings to switch tool off.
Cutterhead seized on piston	If the tool has been laid up or used with water present, rust may have built up between the piston and cutter.	In extreme cases it may be necessary to apply heat to release the cutter head, otherwise a releasing agent may be sufficient.

All rights reserved. Any unauthorised use or copying of the contents or part thereof is prohibited.
This applies to trademarks, model denominations, part numbers and drawings.

Use only genuine Trelawny spares.
The use of non-Trelawny spare parts invalidates the warranty.



TRELAWNY

SURFACE PREPARATION TECHNOLOGY



Distributed exclusively by:



22 Harbor Avenue, Norwalk, CT 06850 USA

Toll-Free: 800-700-5919

Phone: 203-853-9522

Fax: 203-853-9921

Email: info@csunitec.com

www.csunitec.com