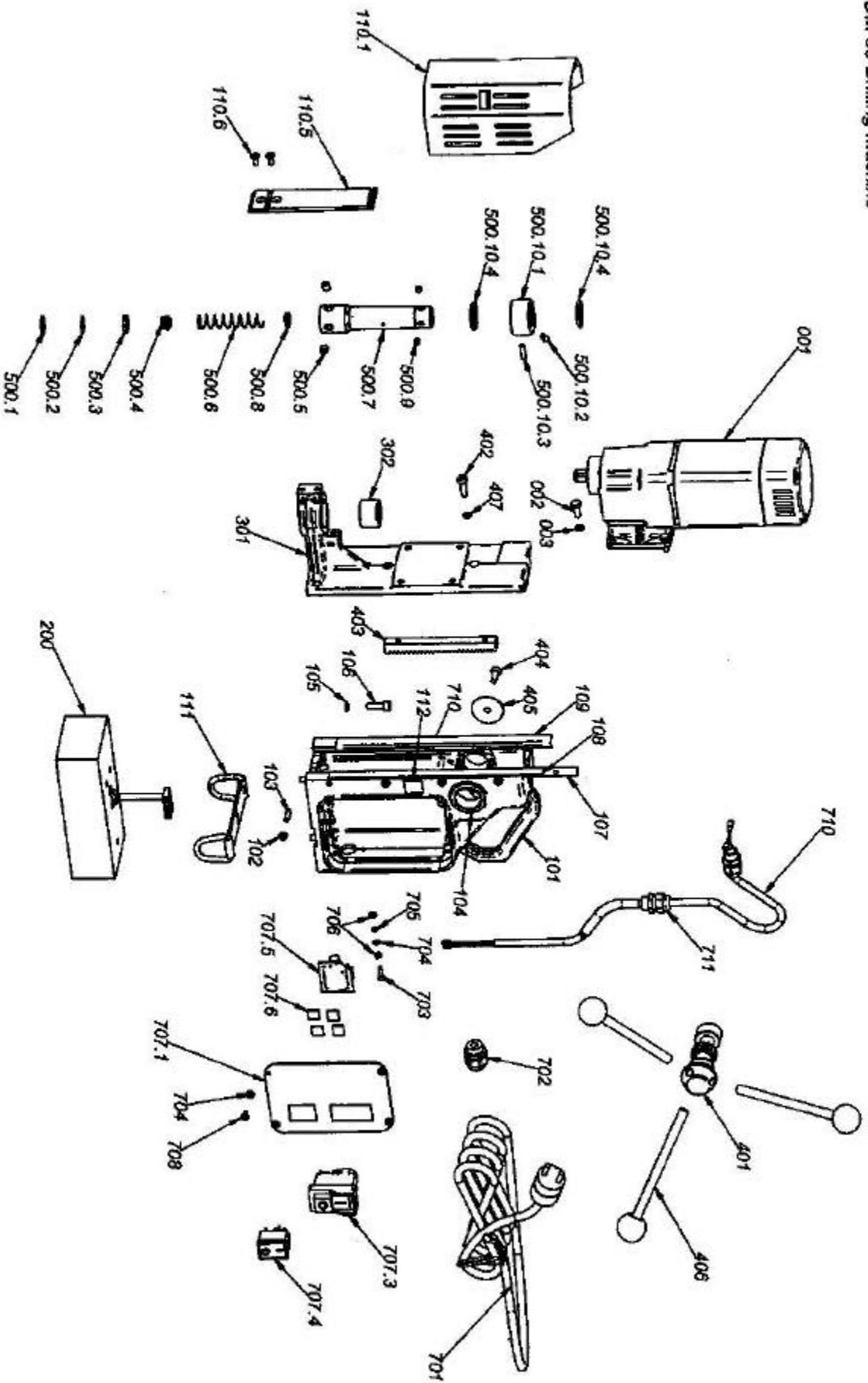


MDM 35 Drilling Machine



Not responsible for typographical errors.

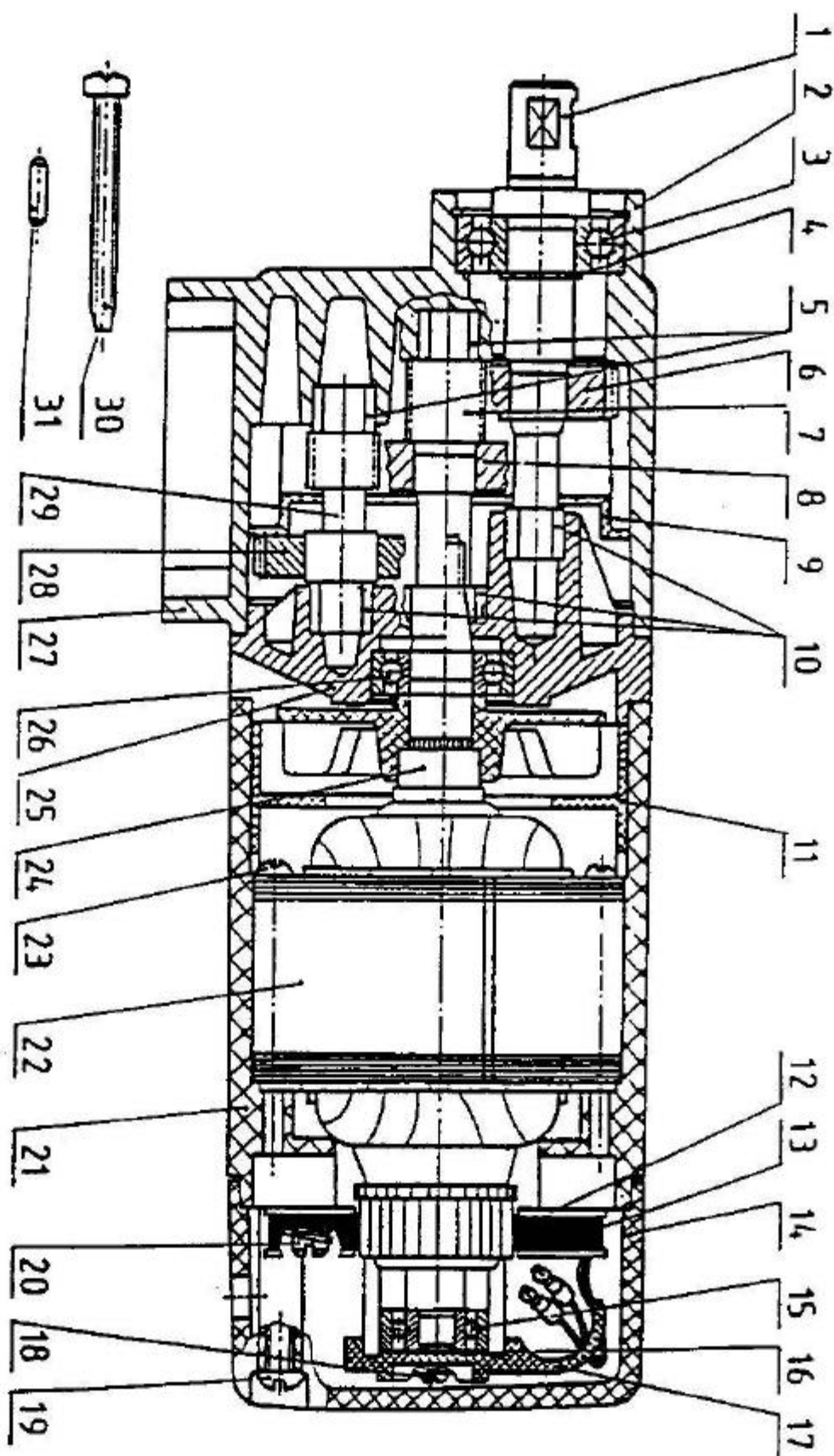
POS. NO.	ITEM NO.	DESCRIPTION
105 + 407	020.0111	Washer
108 + 109	035.0311	Brass Rail
110. 1	035.0486	Safety Guard
110. 5	035.0491	Guard Slide
110. 6	035.0496	Screw
500 + 500. 7	035.0396	Spindle Complete
500. 1	035.0371	Circlip
500. 10	020.0145	Coolant Ring Assembly
500. 2	035.0376	Washer
500. 3	035.0381	Seal
500. 4	035.0386	Button
500. 5	020.0136	Screw See # 238-910
500. 6	035.0391	Spring
500. 8	035.0401	Washer
500. 9	020.0176	Screw
704 + 705	020.0186	Washer
707. 1	035.0466	Front Plate
707. 3	030E.0092	Switch, Motor
707. 4	020.0011	Magnet Switch
707. 5	020.0005	Control Unit-110V
2	035.0296	Socket Screw
3	035.0297	Spring Washer
101	035.0301	Frame
102	020.0096	Nut
103	020.0091	Screw
104	035.0306	Brass Bush
106	020.0106	Socket Screw
107	035.0316	Adjusting Plate
111	035.0501	D-Ring Safety Chain/Strap
200	035.0201	Magnet
301	035.0326	Slide
302	035.0331	Needle Bearing
401	035.0346	Capstan Hub Assembly
402	020.0146	Socket Screw
403	035.0351	Rack
404	020.0081	Screw
405	035.0356	Washer
406	035.0366	Arm for Capstan WITH KNOB
600	KSP.350	Auto Coolant Assembly
701	020.0036	Power Cord
702	020.0031	Cable Gland
703	020.0101	Screw
706	020.0181	Nut

CS Unitec, Inc.

22 Harbor Ave, Norwalk, CT 06850

Telephone: 203-853-9522 Toll Free: 800-700-5919 Fax: 203-853-9921

WebSite: www.csunitec.com E-Mail: info@csunitec.com



Product Group: B

Effective: 12/6/2005

Not responsible for typographical errors.

<u>POS. NO.</u>	<u>ITEM NO.</u>	<u>DESCRIPTION</u>	
	035.0162	Motor Complete	
1	035.0001	Spindle Drive Shaft	
2	035.0006	C-Clip	
3	035.0011	Bearing	
4	035.0016	C-Clip	
5	035.0021	Bearing, Brass	
6	035.0026	Spindle Gear	
7	035.0031	Gear Shaft - 2nd	
8	035.0036	Gear- 2nd	
9	035.0041	Gear Plate, Inner 2nd	
10	035.0046	Bearing, Brass	
11	035.0051	USE 032.0161	
12	035.0056	Carbon Brush Holder	
13	035.0061	Brush, Carbon	
14	035.0066	End Cover	
15	035.0071	Bearing	SEE #9 1001 0040
17	035.0076	Condenser Holder	
18	035.0081	Screw	
19	80201284	Screw	Replaces 032.0106
20	035.0091	Screw & Spring	
21	035.0096	Housing	
22	035.0102	Field	
23	035.0106	Screw for 035.0101	
24	035.0112	Armature	
25	035.0116	Inner Gear Plate	
26	035.0121	Bearing	
27	035.0126	Gear Casing	
28	035.0131	Gear - 1st	
29	035.0136	Shaft - 1st Gear	
30	035.0141	Screw	
31	035.0146	Casing Pin	
32	035.0151	Washer	
33	035.0156	CirClip	

CS Unitec, Inc.

22 Harbor Ave, Norwalk, CT 06850

Telephone: 203-853-9522 Toll Free: 800-700-5919 Fax: 203-853-9921

WebSite: www.csunitec.com E-Mail: info@csunitec.com