

SERVICING continued

Machine storage

Short period storage: up to 3months.

Clean the outside of the machine and inspect the cutter heads for wear, replace any worn parts as required.

Remove any build up of material from the cutter head area.

Insert a liberal quantity of air tool oil through the air inlet and run briefly to ensure that internal components are coated with oil.

Cover the machine to protect it: Store the machine in a dry place.

Long period storage: over 3months

Clean outside of machine, inspect the cutter heads for wear; replace any worn parts as required.

Remove any build up of material from the cutter head area.

Insert a liberal quantity of air tool oil through the air inlet and briefly run to ensure that internal components are coated with oil. Lubricate the exposed part of the piston and cylinder. (See recommended lubricants)

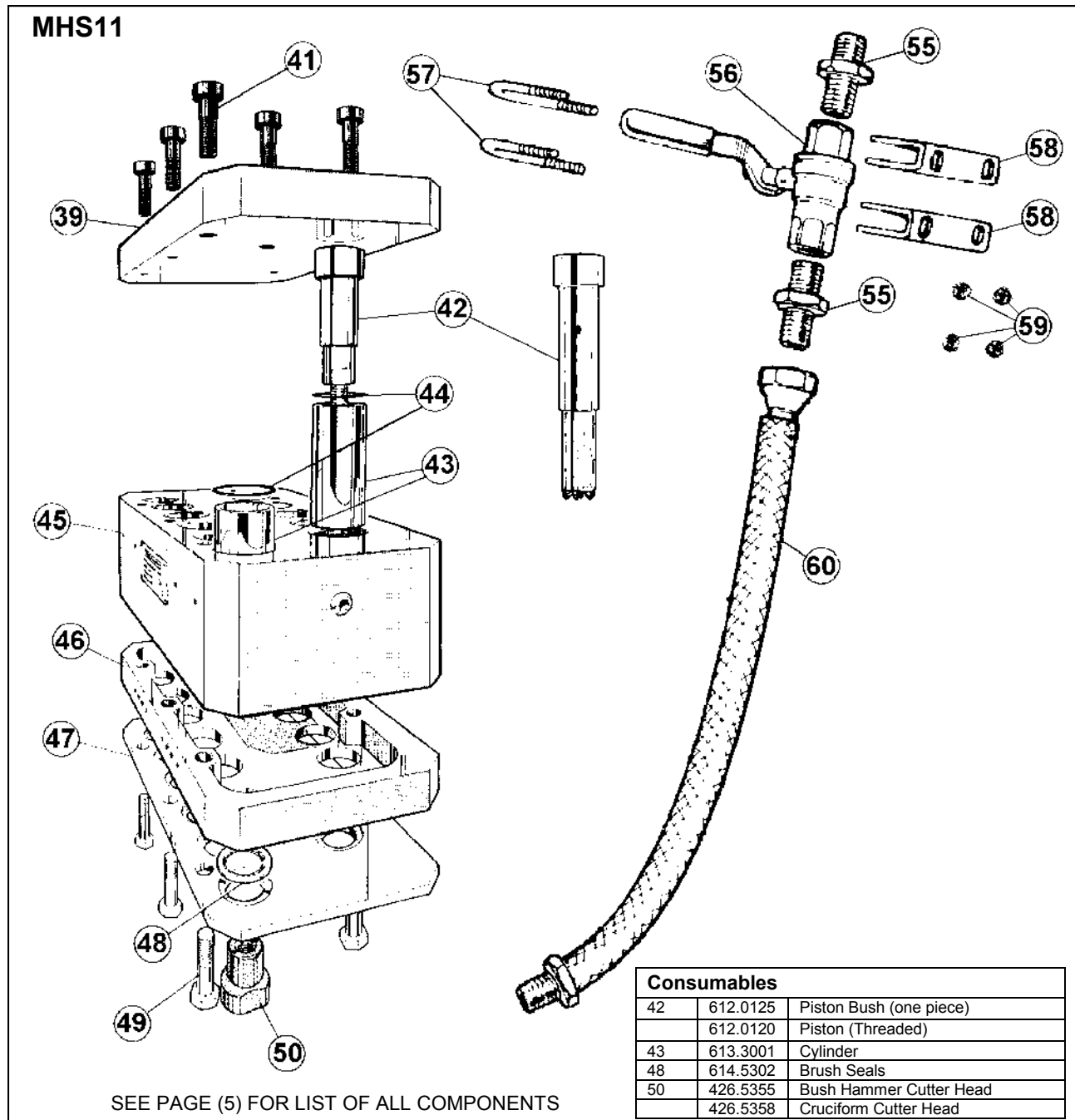
Cover the machine to protect it: Store the machine in a dry place.

After 6 months have elapsed, check the condition of the hose then insert a liberal quantity of air tool oil into the air inlet as previously described and briefly run to ensure that internal components are coated with oil.

Prior to using the machine again check the condition of the hose and the vibration mountings for signs of perishing etc, replace if suspect, continue as per the "before use" instructions.

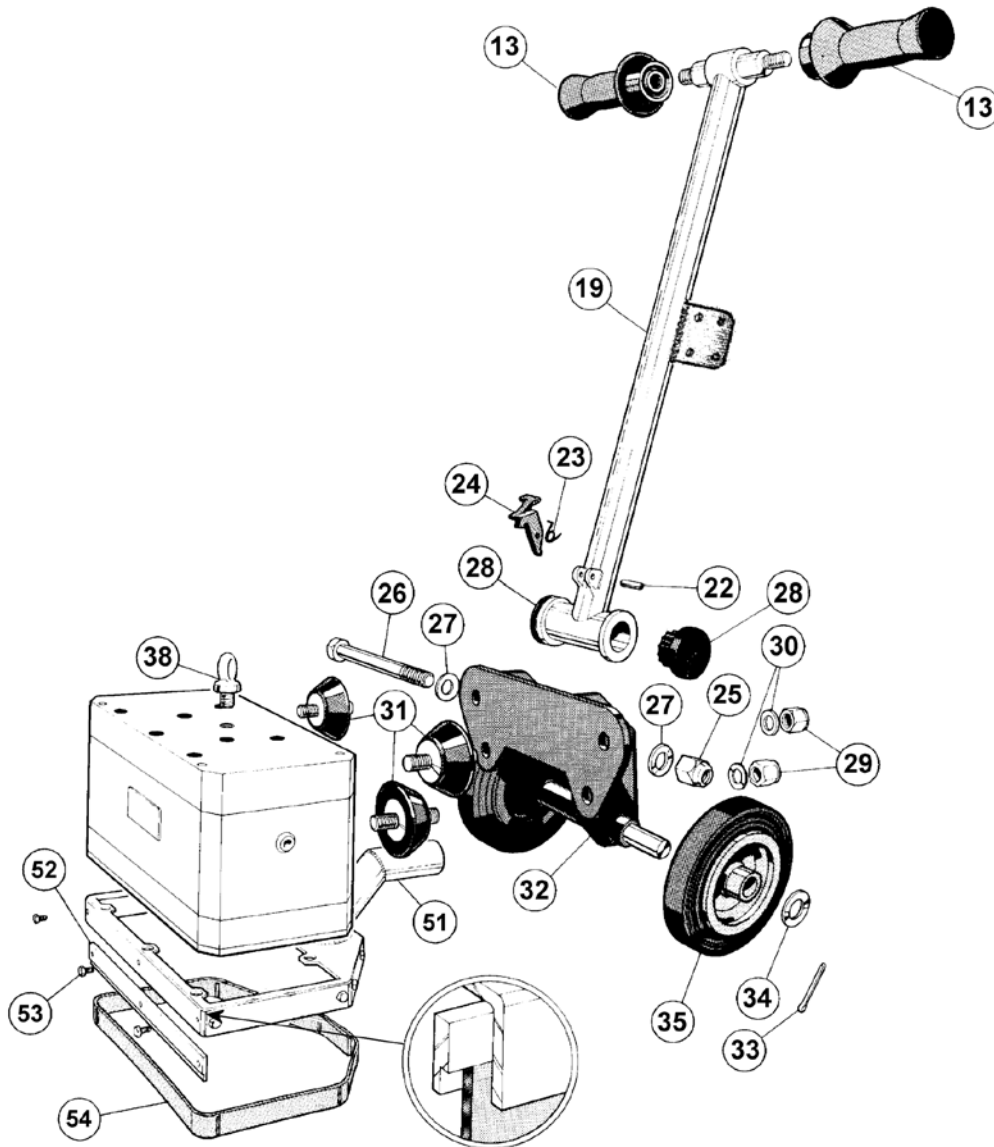
When next used, continue as per "Pre-Start Check" section.

Exploded View 1



SERVICING continued

Exploded View 2



PART NUMBER LIST

Item No	Part No	Description	Item No	Part No	Description
13	490.0200	Hand Grip (set of 2)	44	809.0500	Cylinder 'O'Ring - Prior Nov 2013
19	422.0120	Prior 2010 - Handle Assembly		809.0269	Cylinder 'O'Ring - After Nov 2013
	422.0125	2010 onwards - Handle Assembly	47	654.1120	Sealing Plate
22-24	491.4100	Prior 2010 - Foot Release set	48	614.5302	Brush Seals
	491.4110	2010 onwards - Foot Release set	49	831.3120	Bolt M12 x 65 Hex Head
23	714.0120	Prior 2010 - Spring		*806.1265	Cap Head Screw M12 x 65 (For Vacuum Shroud)
	713.0125	2010 onwards - Spring	50	426.5355	Bush Hammer Cutter Head (for 612.0120)
25-27	491.2000	Handle Pivot Bolt assembly		426.5358	Cruciform Cutter Head (for 612.0120)
28	490.1000	Rubber Mountings (set of 2)	51	437.0120	Vacuum Shroud assembly (Inc 52,53,54 and *806.1265)
29-31	491.0200	Rubber Block mounting kit (set of 4)	52	492.0120	Clamp Plates (set of five)
32	440.0120	Subframe	53	490.3200	M5 Hexagon Head Screws (Set of 11)
33-35	491.1100	Wheel assembly (set of 2)	54	731.0120	Vacuum Shroud Seal
38	831.4120	Eye Bolt	55	826.5004	Adaptor 3/4 BSP x 3/4" BSPT
39/45/46	491.5000	Cylinder Block	56	828.1000	Ball Valve
41	806.1260	Caphead Screw	57-59	491.2100	'U' Bolt assembly (set of 2) (Prior 6.2013)
42	612.0125	Piston Bush (one piece)	57	831.2000	'U' Bolt U' Bolt (2 x required) (After 6.2013)
	612.0120	Piston (Threaded)	60	719.0750	Armoured Hose inc fittings
43	613.3001	Cylinder			

SEE PAGE (4) FOR LIST OF CONSUMABLES