

**Repair and  
Tuning up kit  
Type 2 2406 001R/ 001T  
for Hydraulic Rotary Hammer  
Type 2 2406 0010  
Techn. Doc. No. 262**



Illustration can differ from the original

**Repair Manual  
and Spare Parts List**

## Repair

Disassemble the tool until only if you are skilled and have the appropriate technical knowledge. Problems could be in the hydraulic power supply, the gearbox module, or the power and control (rear) module. Then only disassemble the tool as necessary to repair as required.  
Keep contaminants such as dirt and grit away from the internal parts at all times.

Always determine and correct the cause of the problem prior to re-assemble. Further wear and tool failure can result, if the original cause is not corrected.

### Prior to disassembly

Clean the exterior of the tool.

Make sure to have all new seals so they can be replaced during reassembly. Note the orientation of seals before removal. Install new seals in the same position as the original seals.

**Note:** For orientation of the parts refer to the sectional drawing and parts list located at the end of this manual.

### Re-assembly

Before starting reassembly check all parts for wear and replace them if necessary. Wear parts are in particular O-rings, radial shaft seals and bearings.

We recommend changing the grease in the gear housing after 300 hours of operation. Use a special-purpose gear grease only:


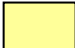
Consistency class (DIN 51818)	2
Saponification type	Lithium
Worked penetration	265 to 295
Temperature range	-25°C to +125°C

The proper quantity of grease is very important from the point of good lubrication and low heat generation.

### Spare Parts

Only original spare parts may be used. There is no warranty for damages and liability is disclaimed, if non-original spare parts and accessories are used.

2 2406 001T = 

2 2406 001R =  + 



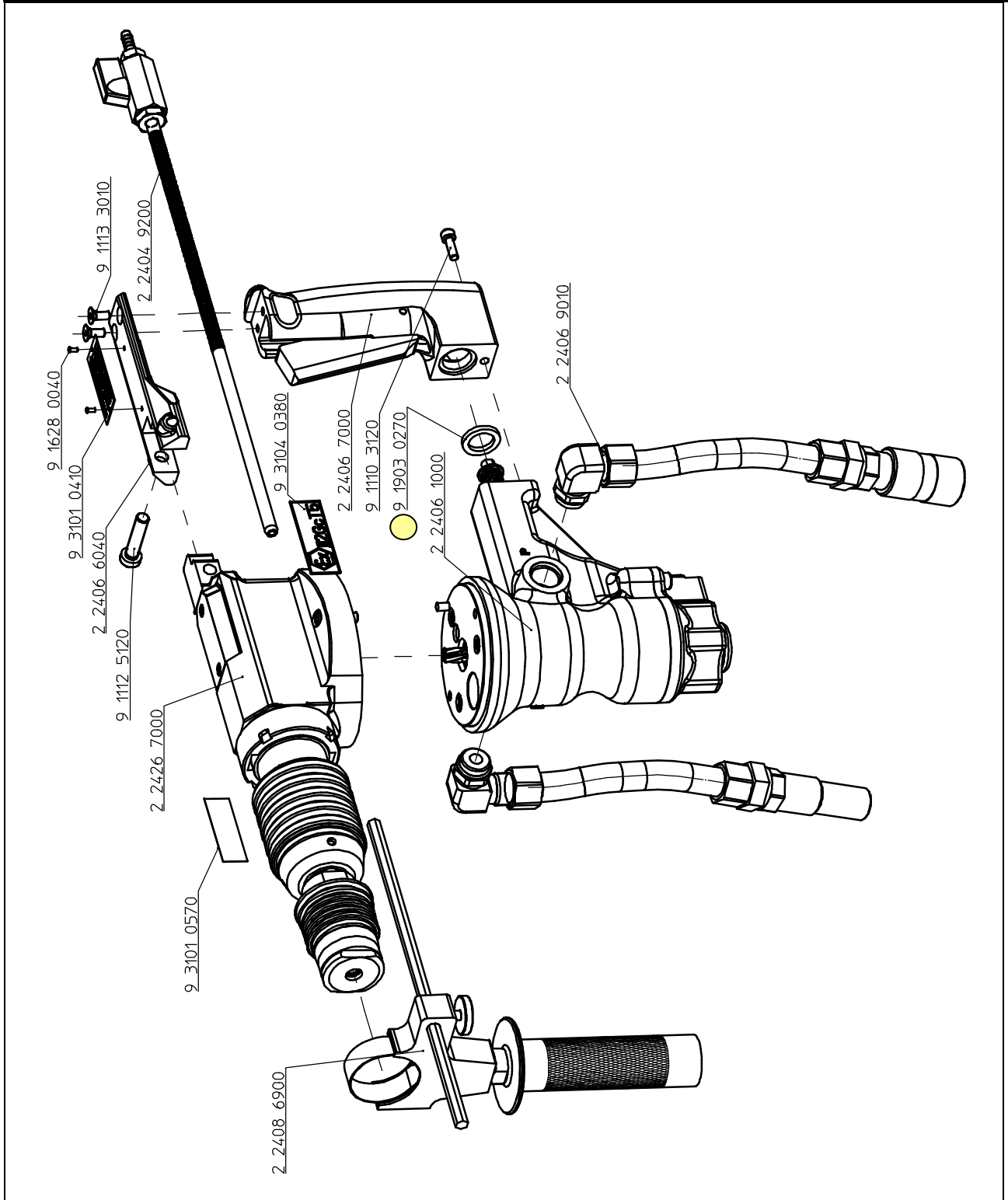
## Spare Part List

Description:

**Hydraulic Rotary Hammer Drill**

Part and drawing number:

**2 2406 0010**



## Spare Parts List

Description:

**Output unit, assy.**

Part and drawing number:

**2 2426 7000**

Item	Qty.	Description	Part and Drawing no.	Remarks
401	1	Gearbox housing	2 2404 4010	
402	1	Tension sleeve	2 2404 8100	
403	1	Sliding sleeve	2 2404 7130	
404	1	Bushing	2 2404 7140	
405	1	Feather key	9 1506 9240	
407	1	Shifter sleeve, assy.	2 2404 8940	
408	1	Cylinder, assy.	2 2404 8920	
409	1	Impact piston	2 2404 4540	
410	1	Nut	2 2404 8240	
411	1	End piece	2 2404 7010	
412	1	Bevel gears	2 2404 4400	
413	1	Piston	2 2404 4520	
414	1	Piston pin, assy.	2 2404 4960	
415	1	Cover	2 2404 4090	
416	1	Crankshaft	2 2404 4550	
417	2	Roller	2 2404 4570	
418	1	Gear pinion	2 2404 4040	
419	1	Bushing	2 2404 8080	
420	1	Output shaft	2 2404 8090	
421	1	Sealing	2 2404 4190	
422	1	Output unit housing	2 2404 8010	
423	1	Connecting rod	2 2426 4530	
424	1	Shaft seal	9 1905 0540	
425	1	Slip clutch, assy.	2 2404 4920	
426	1	O-ring	9 1901 3500	
427	2	O-ring	9 1901 3290	
428	1	O-ring	9 1921 2140	
429	1	Pressure spring	9 1803 4190	
430	1	Feather key	9 1501 1140	
431	4	Roller	2 2404 4580	
432	1	O-ring	9 1901 5940	

<b>Spare Parts List</b>					
Description:				Part and drawing number:	
<b>Output unit, assy.</b>				<b>2 2426 7000</b>	
Item	Qty.	Description	Part and Drawing no.		Remarks
433	1	Scraper	9 1908 1780		
434	1	Pressure spring	9 1807 0210		
435	1	Feather key	9 1501 1040		
436	1	Needle sleeve	9 1014 0450		
437	1	Needle sleeve	9 1014 0010		
438	2	Socket head screw	9 1112 2020		
439	1	Grooved ball bearing	9 1004 0010		
440	1	Snap ring	9 1703 0080		
441	1	O-ring	9 1901 3270		
442	1	Snap ring	9 1703 0130		
443	1	Grooved ball bearing	9 1003 0050		
444	1	Grooved ball bearing	9 1003 0020		
445	1	Grooved ball bearing	9 1001 0070		
446	1	Sealing ring	9 1913 0730		
448	1	Snap ring	9 1702 0050		
449	1	Snap ring	9 1702 0040		
450	1	O-ring	9 1901 5970		
451	2	Socket head-screw	9 1110 4030		
452	2	Sealing U-shape	9 1908 1930		
453	2	Sealing U-shape	9 1908 1950		
454	1	O-ring	9 1901 2610		
455	1	Sliding bearing	9 1029 0130		
456	1	Shaft sealing ring	9 1905 1580		
457	1	Snap ring	9 1702 0020		
458	1	O-ring	9 1901 4070		
		* Wear parts to be stored in case of			
		continuous use!			

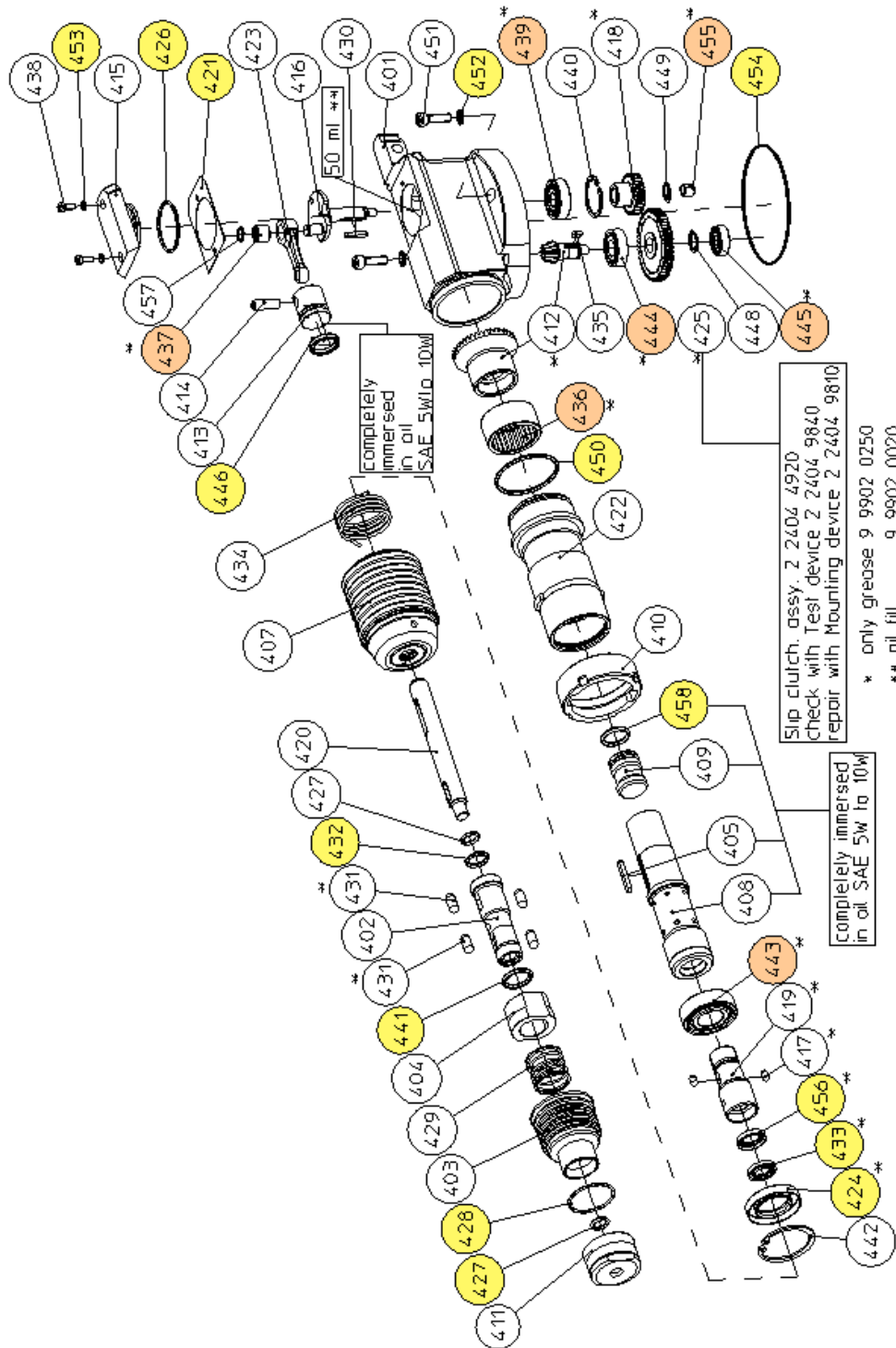
### Spare Parts List

Description:

**Output unit, assy.**

Part and drawing number:

**2 2426 7000**



## Spare Part List

Description:

**Hydraulic Motor**

Part and drawing number:

**2 2406 1000**

Item	Qty.	Description	Part and drawing no.	Remarks
100	1	Hydraulic motor	9 5501 0130	with item 104-114
104	1	Shaft sealing ring	9 1925 0450	
106	1	Axial disc	9 1024 0360	
107	1	Axial thrust bearing	9 1024 0370	
108	1	Spacer	9 5501 0040	
109	1	Carrier	9 5501 0140	
110	1	Drive shaft	9 5501 0150	
111	3	O-ring	9 1921 1240	
112	1	Cover disc	9 5501 0070	
113	1	Geroler element	9 5501 0160	
114	1	Rotary slide	9 5501 0090	
115	1	Bushing	9 1029 0530	
151	1	Housing, assy.	2 2406 1910	with item 115
152	1	Motor cover, assy.	2 2407 1930	with item 172
153	1	Centring cover, assy,	2 2406 1940	
154	1	Pinion shaft	2 2406 4170	
155	1	Gear rim	2 2406 4020	
156	1	Pinion	3 8837 4360	
157	2	Planet carrier, assy.	3 8837 4920	
158	6	Planet wheel	3 8837 4140	
159	6	Needle cage	9 1015 0790	
160	2	Grooved ball bearing	9 1001 0050	
161	1	Washer	2 2406 4150	
162	1	Snap ring	9 1702 0030	
163	1	Snap ring	9 1703 0040	
164	2	Cylinder pin	9 1619 1350	
165	3	Socket head screw	9 1110 4010	
166	3	Gasket	9 1903 1250	
167	2	Cylinder pin	9 1619 0450	
168	1	Driver shaft	2 2406 1050	
169	5	Socket head screw	9 1110 4160	



## Spare Part List

Description:

**Hydraulic Motor**

Part and drawing number:

**2 2406 1000**

Item	Qty.	Description	Part and drawing no.	Remarks
170	2	O-ring	9 1921 4410	
171	2	Plug	9 3401 1060	
172	2	Threaded pin	9 1140 5080	
173	2	Socket head screw	9 1110 4030	
301	1	Governor sleeve	2 1317 3310	
302	1	Glate	5 1220 3050	
303	1	Washer	9 3302 0030	
304	1	Pressure spring	9 1803 3590	
305	1	Locking washer	9 1706 0140	
	1	Valve inert, assy.	2 1317 3300	item 307-326
307	1	Snap ring	9 1703 0260	
308	1	Socket head screw	9 1110 2090	
309	1	Washer	9 3302 0150	
310	1	Governor piston valve	2 1317 3320	
311	1	Spring plate	2 1317 3070	
312	1	Slide	2 1317 3110	
314	1	Sleeve	2 1317 3090	
315	1	Guide	2 1317 3100	
317	1	Pressure spring	9 1803 1700	
318	1	Locking washer	9 1706 0180	
319	1	O-ring	9 1901 3290	
320	1	O-ring	9 1901 9800	
321	1	O-ring	9 1901 2550	
322	1	Threaded pin	9 1148 3030	
323	1	O-ring	9 1901 6020	
326	1	O-ring	9 1901 2080	
		*Wear parts to be stored in case of continuous		
		use		

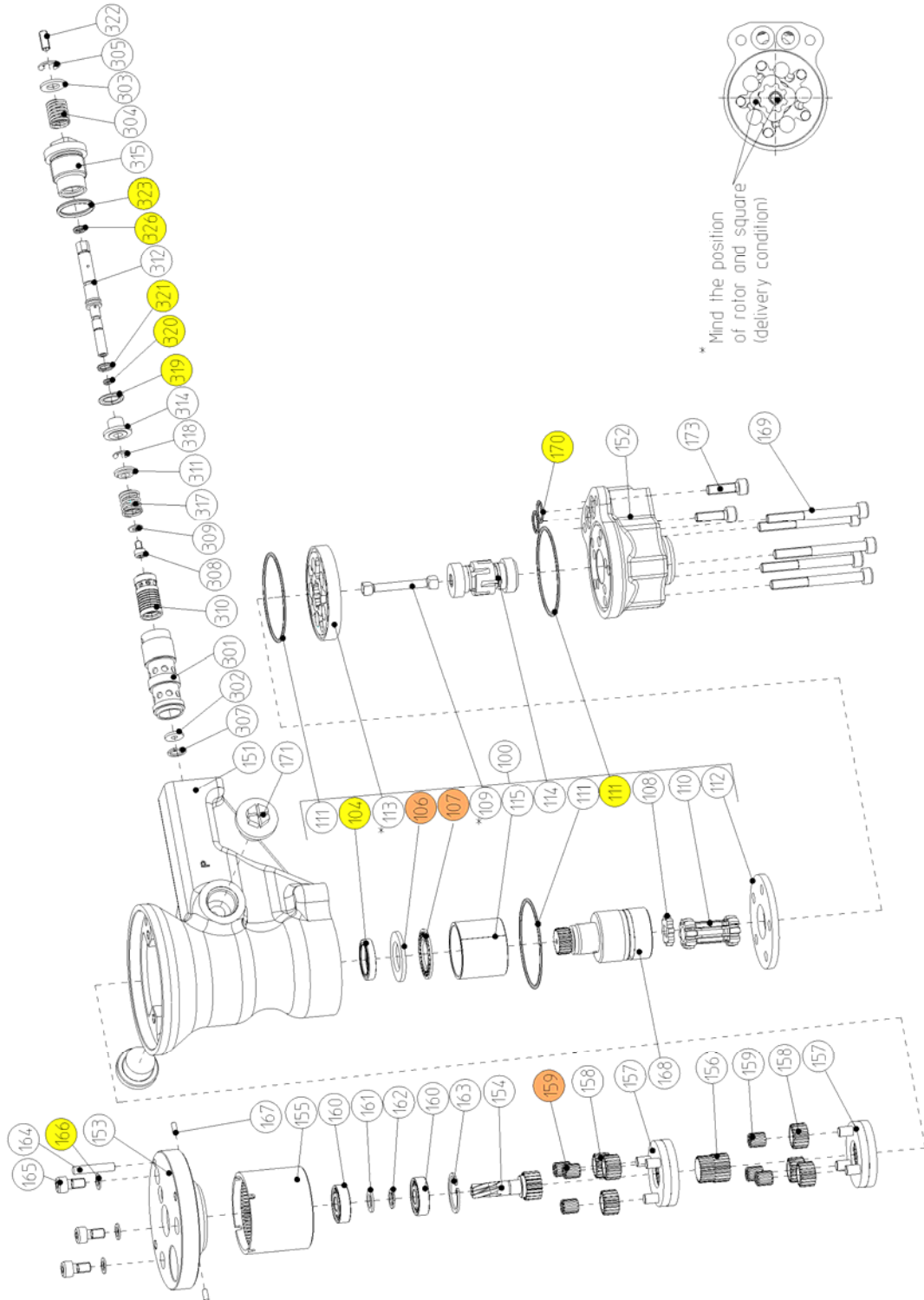
## Spare Part List

Description:

**Hydraulic Motor**

Part and drawing number:

**2 2406 1000**





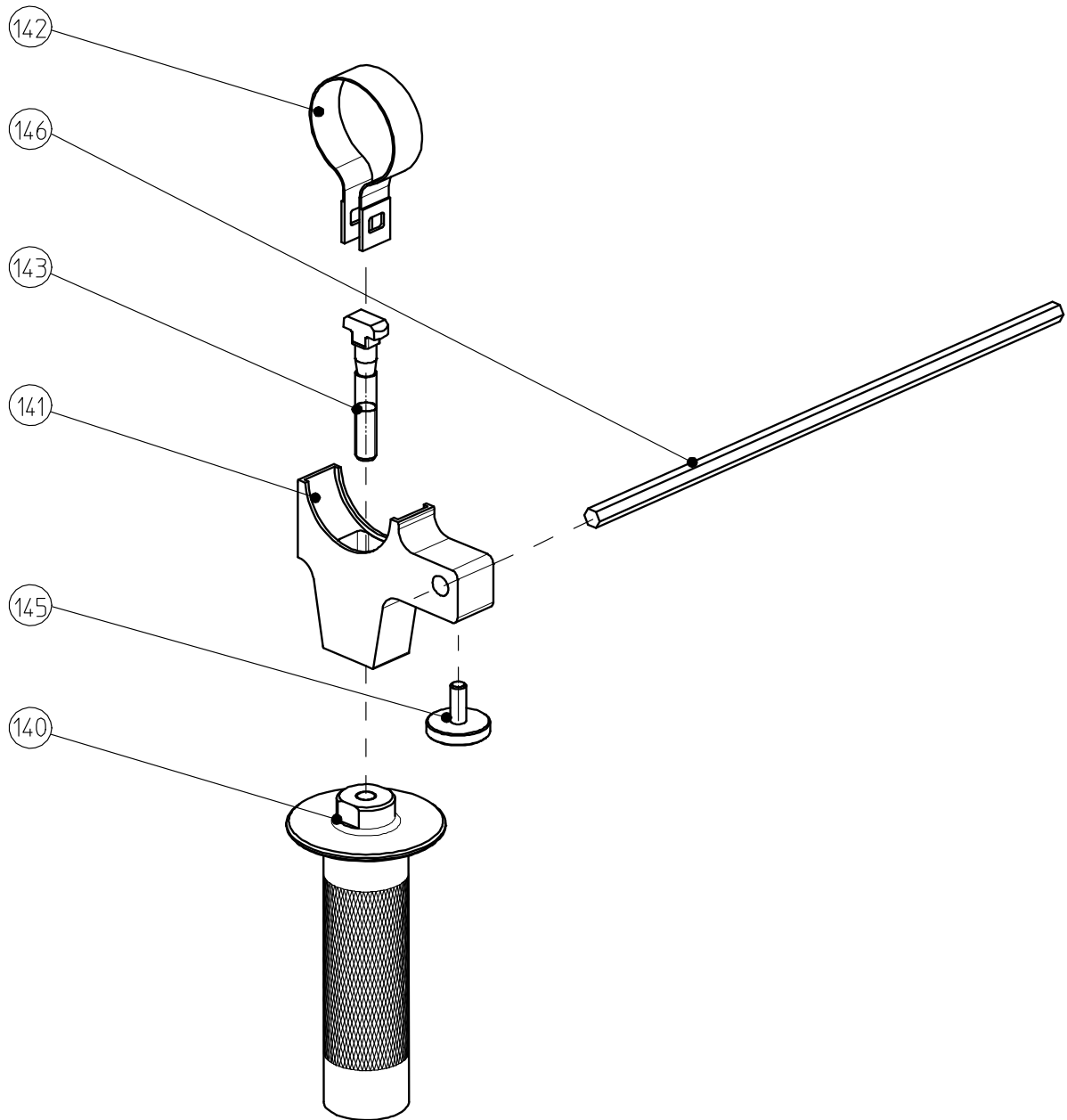
### Spare Parts List

Description:

**Second handle, assy.**

Part and drawing number:

**2 2408 6900**





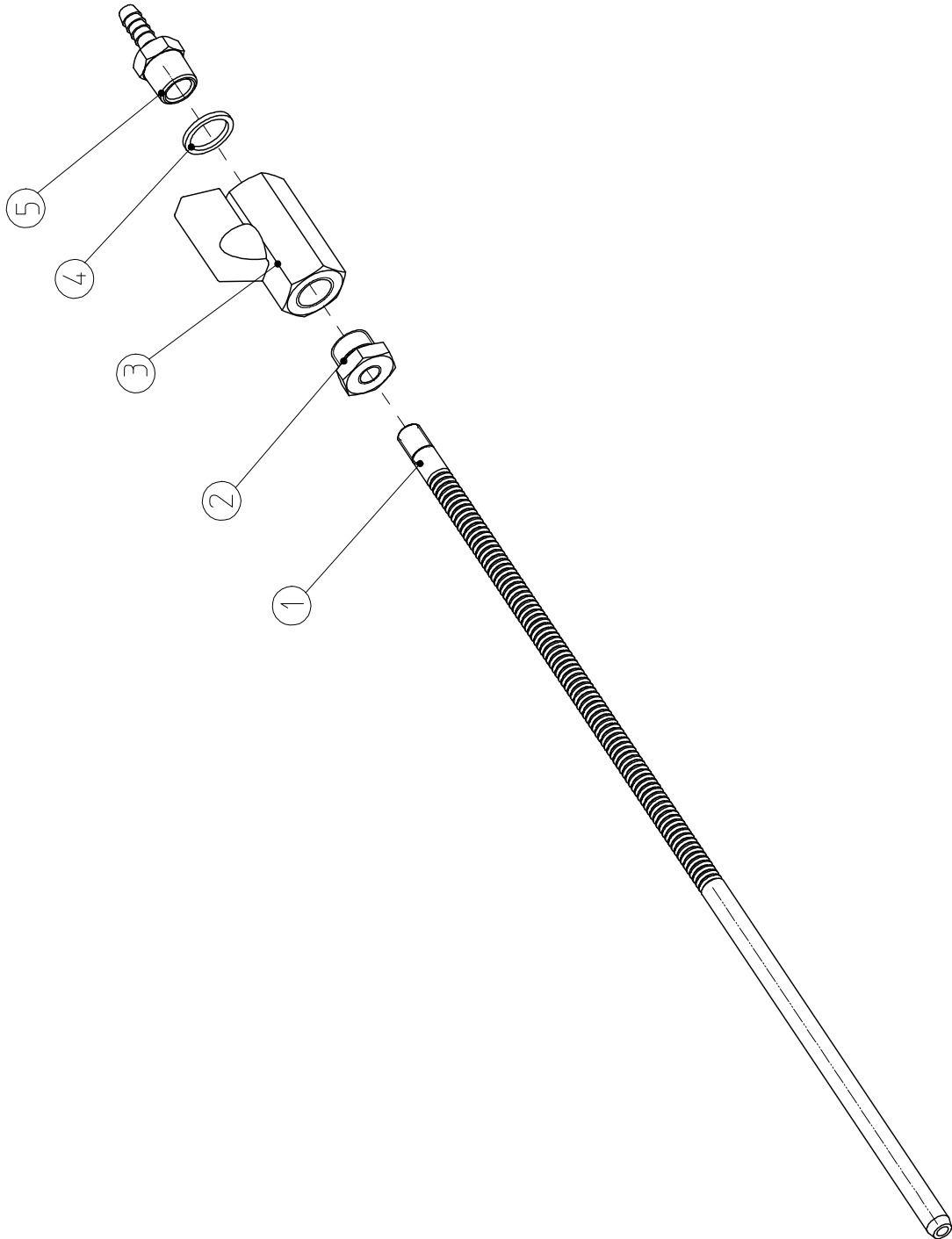
### Spare Parts List

Description:

**Cooling pipe, assy.**

Part and drawing number:

**2 2404 9200**



Note:



22 Harbor Avenue, Norwalk, CT 06850  
Phone: 1-203-853-9522  
Toll-Free: 800-700-5919  
Email: [info@csunitec.com](mailto:info@csunitec.com)

**[www.csunitec.com](http://www.csunitec.com)**