

Pneumatic Band Saw Type 5 6093 0010

Techn. Doc. No. 551



Illustration can differ from the original

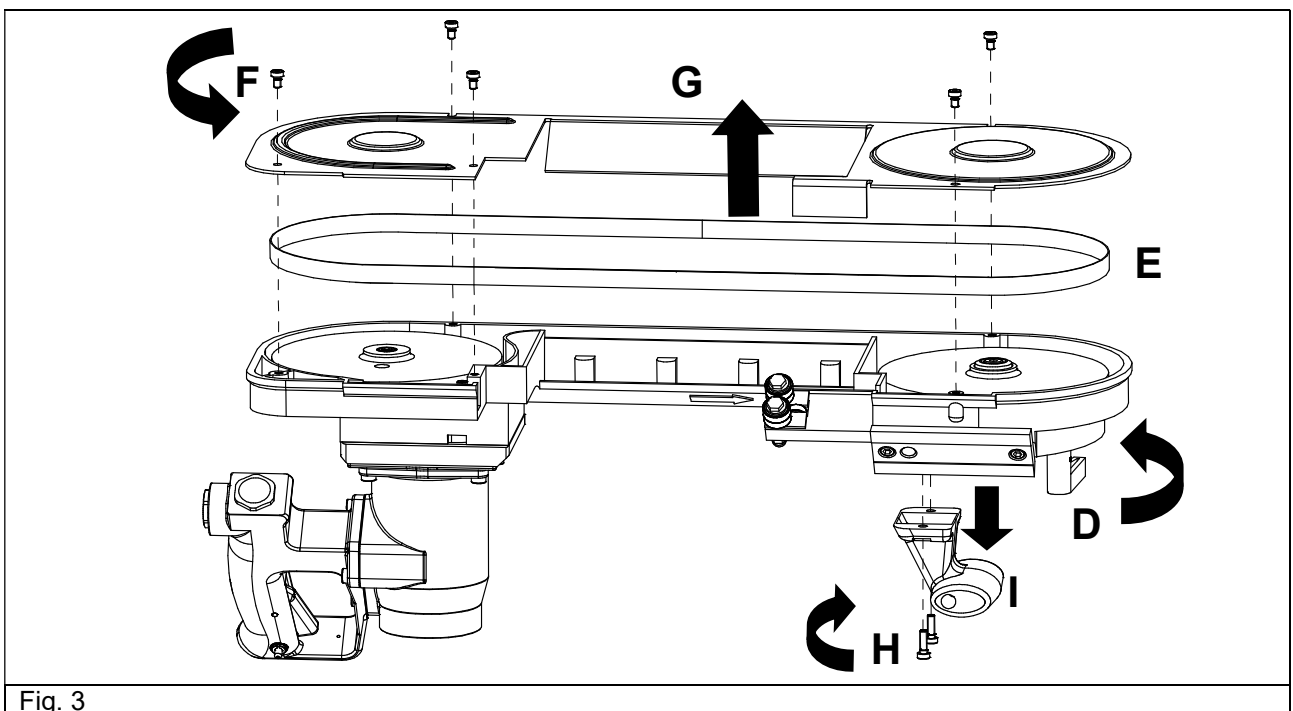
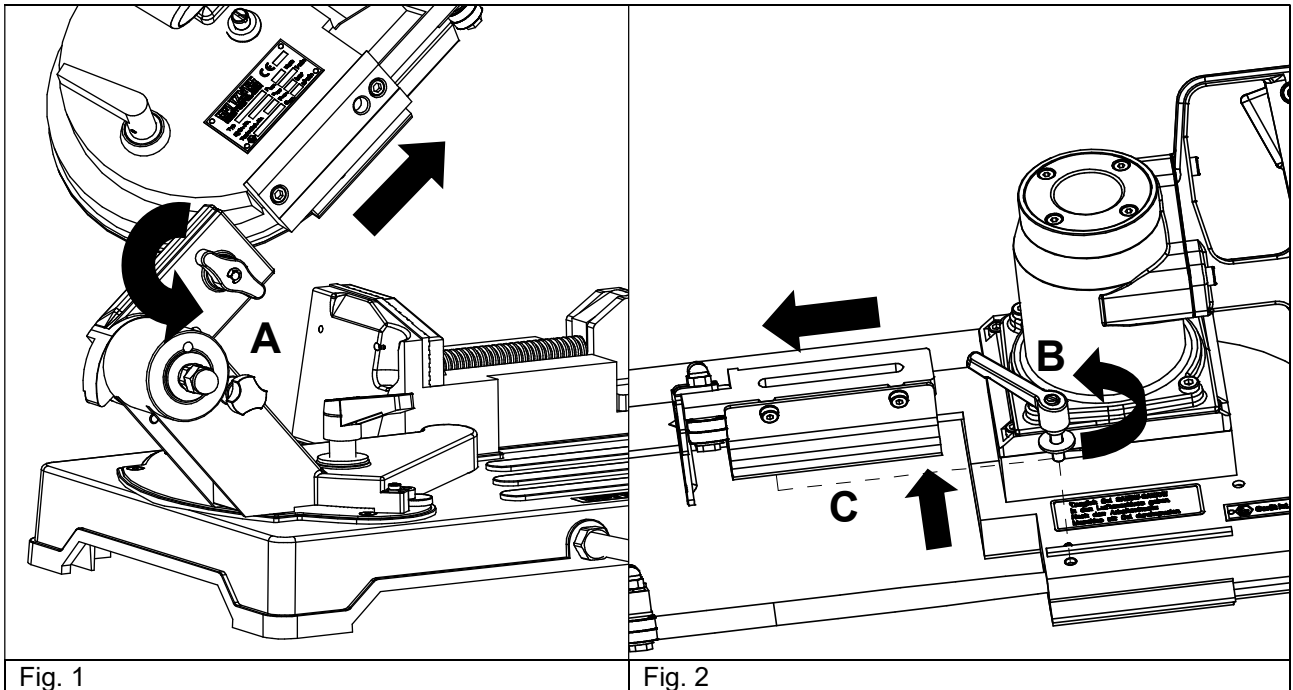
Repair Manual and Spare Parts List

Repair

Disassembly

The disassembly and re-assembly are done according to the technical drawing.
Consider the general safety instructions on site.

Disassembly: Loosen wing nut **A**. Pull saw out of the dovetail guide (see fig.1). Remove tension lever **B** and saw band guide **C** (see fig 2). Loosen tension lever **D** in clockwise direction to release the saw band **E**. Undo screws **F** lösen and remove cover **G**. Remove saw band **E**. Loosen socket head screws **H** and remove handle **I**. (see fig. 3).



Disassembly of the motor/ replacement of the vanes

Remove socket head screws **H**. Take motor **I** from the band saw frame **J** (see fig. 4).

Loosen socket head screws **K** and pull inner motor parts **L** out of the motor housing **M** (see fig. 5).

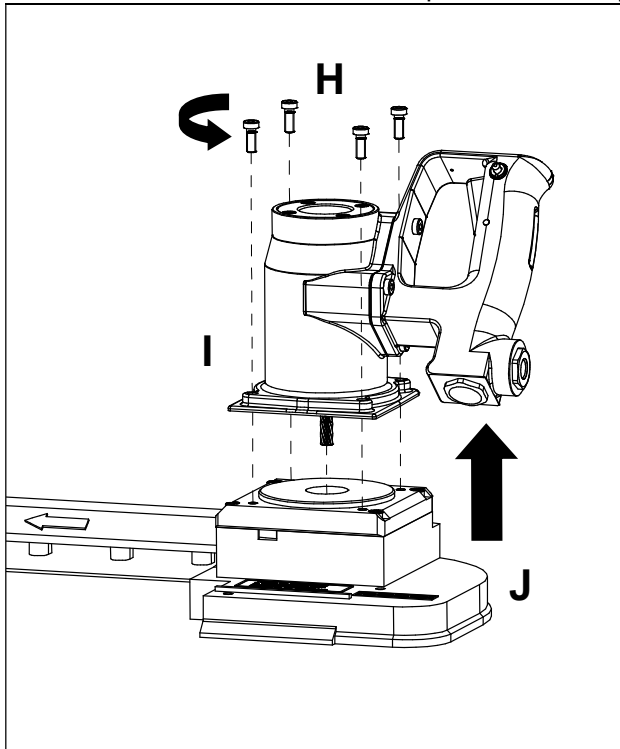


Fig. 4

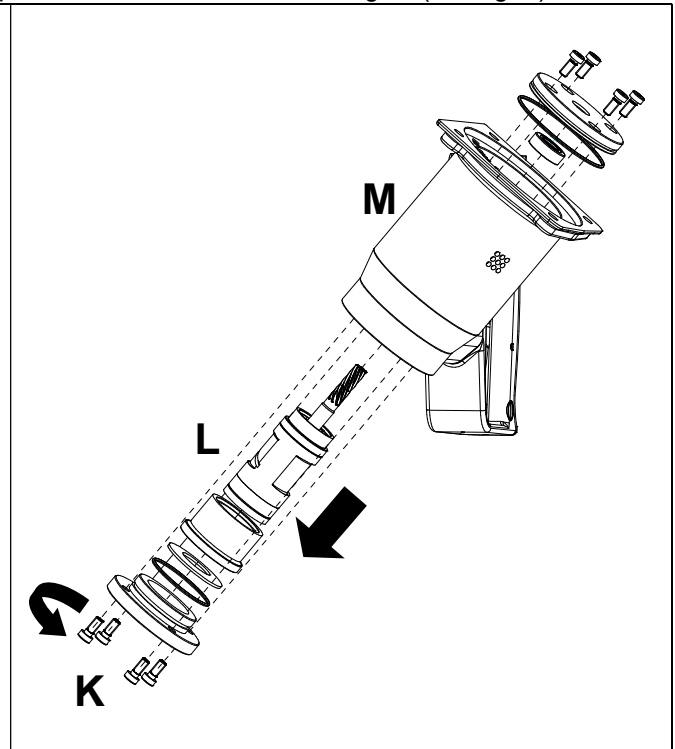


Fig. 5

Continue disassembling inner motor parts **L** (see fig. 6 and 7).

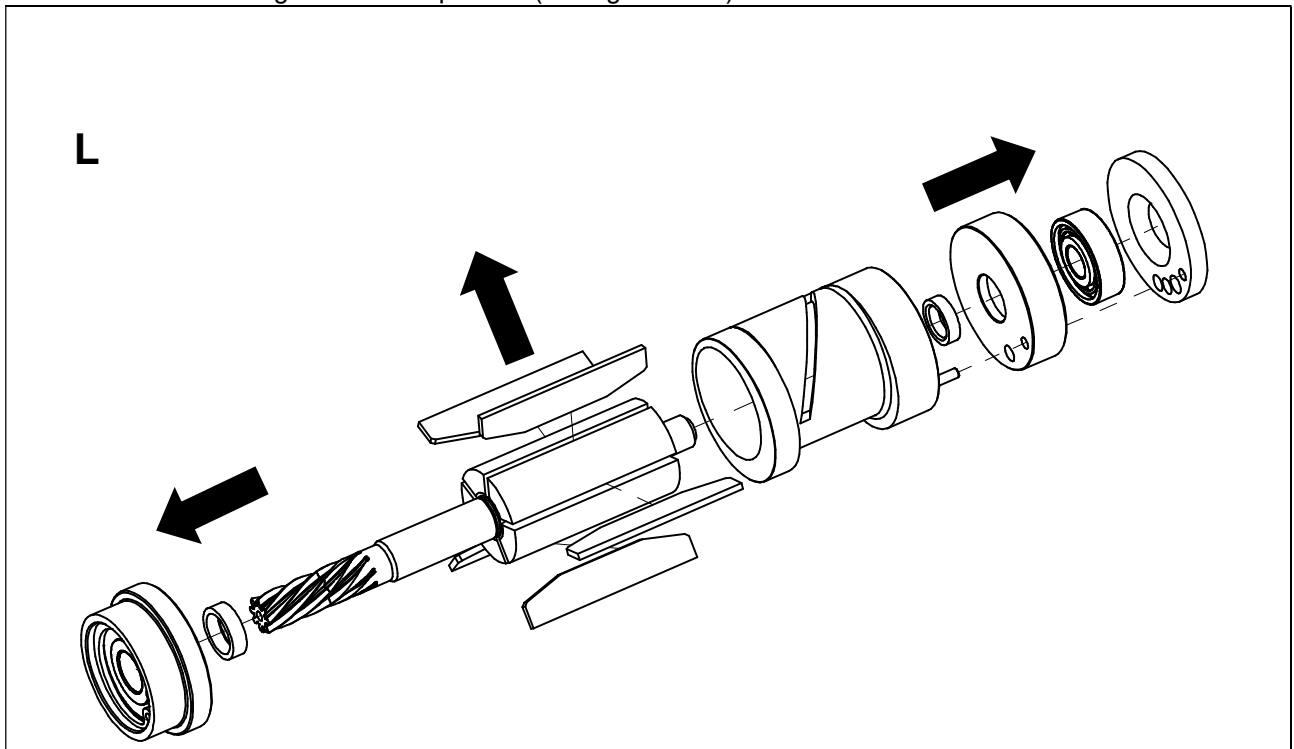
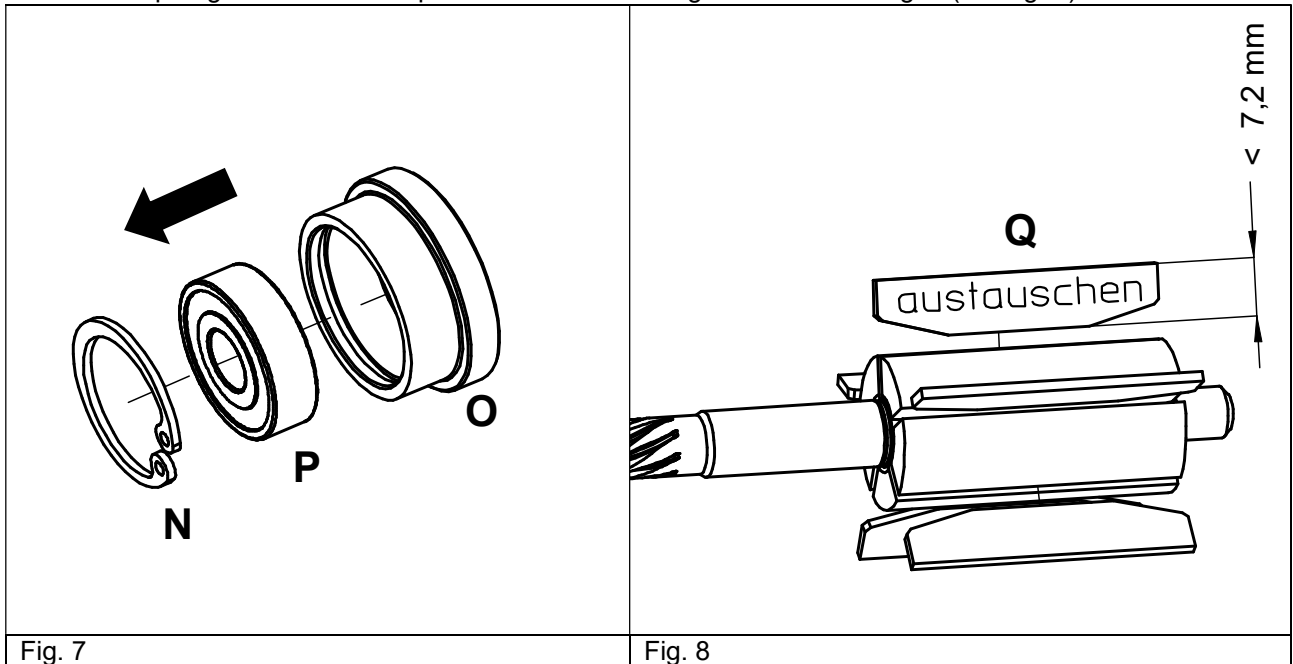


Fig. 6

Remove snap ring **N** from the end plate **O**. Press out the groove ball bearing **P** (see fig. 7).

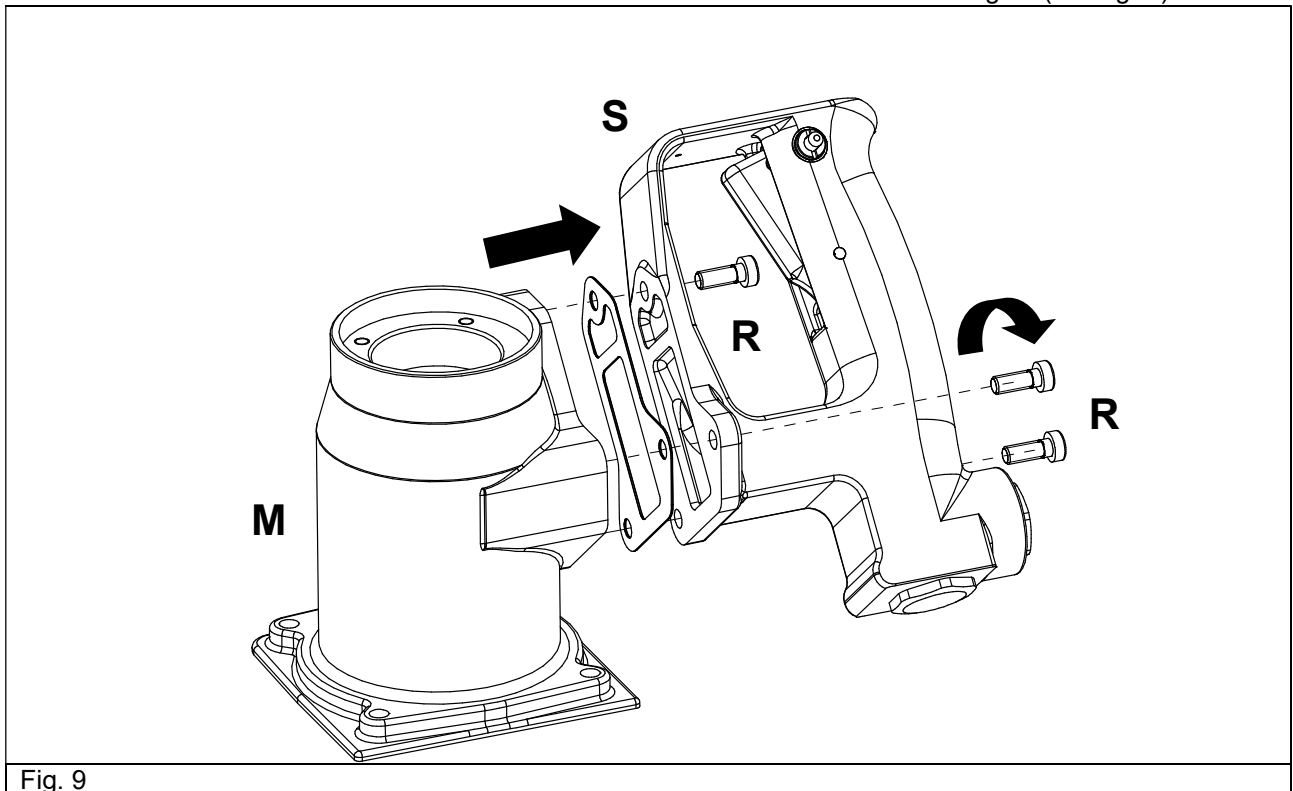


Re-assembly of the motor

Basically the re-assembly is done in reverse order than the disassembly. Wear parts, especially the vanes, have to be replaced. The vanes **Q** are considered to be worn, when their width is less than 7,2 mm (see fig. 8).

Disassembly of the handle

Loosen the socket head screws **R** and remove the handle **S** from the motor housing **M** (see fig. 9).



Loosen locking screw **T**, take out o-ring **U**, spring **V**, ball **W**, sealing **X** and cylinder pin **Y**.
Screw reducing nipple **Z** out of the handle **S** (see fig. 10).

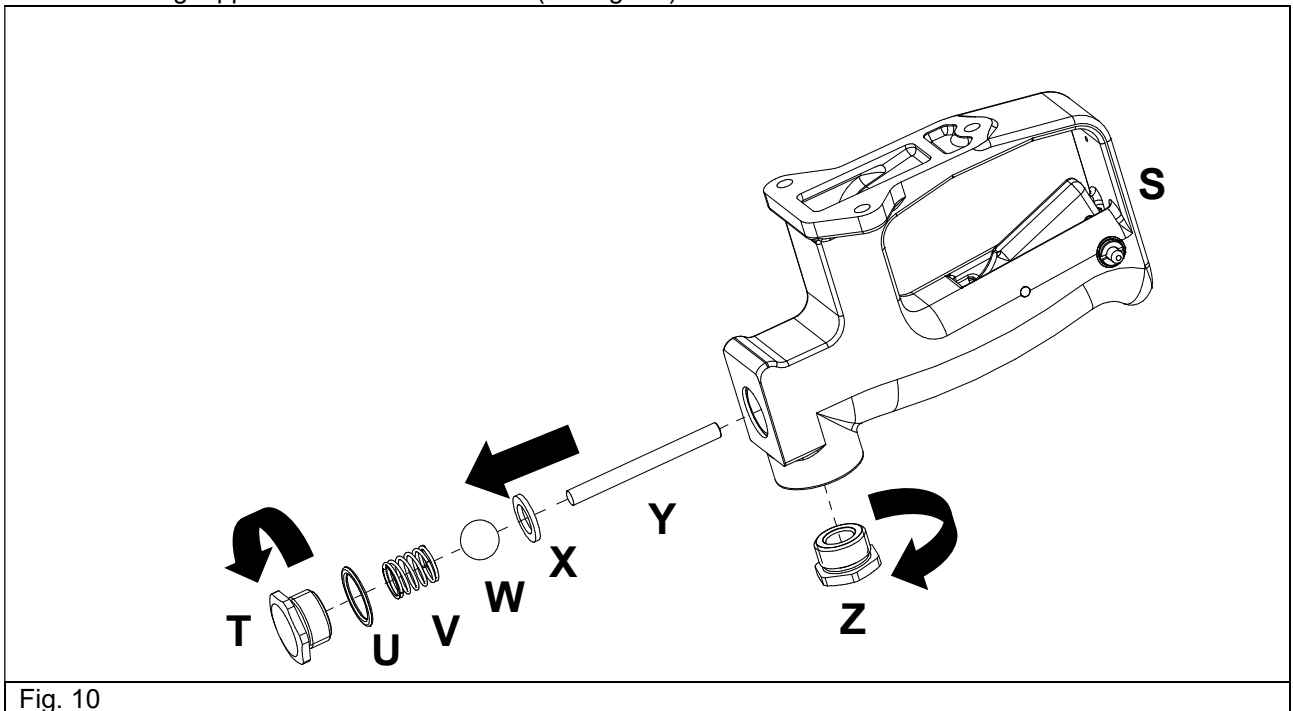


Fig. 10

Hit out double notched pin **a**. Pull out valve trigger **b**.
Loosen pressure sleeve **c**. Take out pressure spring **d** and locking slide **e** (see fig.11).

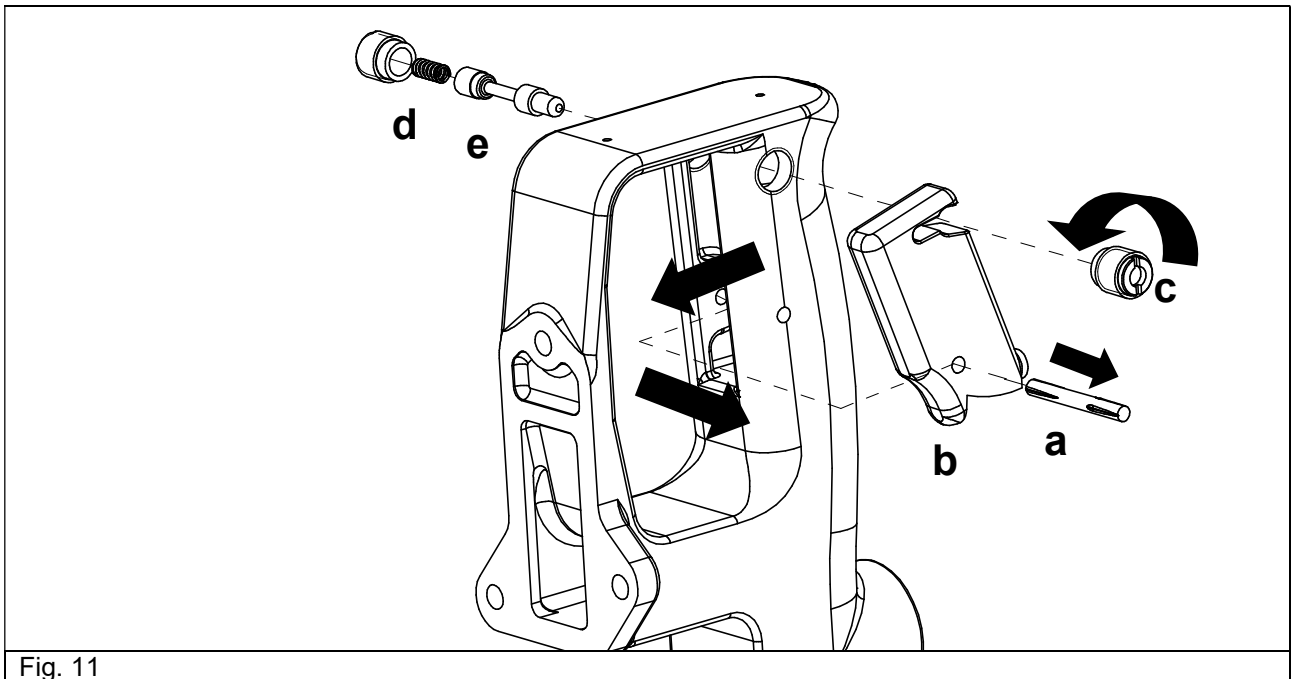


Fig. 11

Re-assembly of the handle

The assembly is done in reverse order.

Disassembly of the gear and the band saw head

Prepare as follows: Remove socket head screw **f** with bushing **g** and spacer **h**. Remove pulley **i** and pulley **j** (see fig.12).

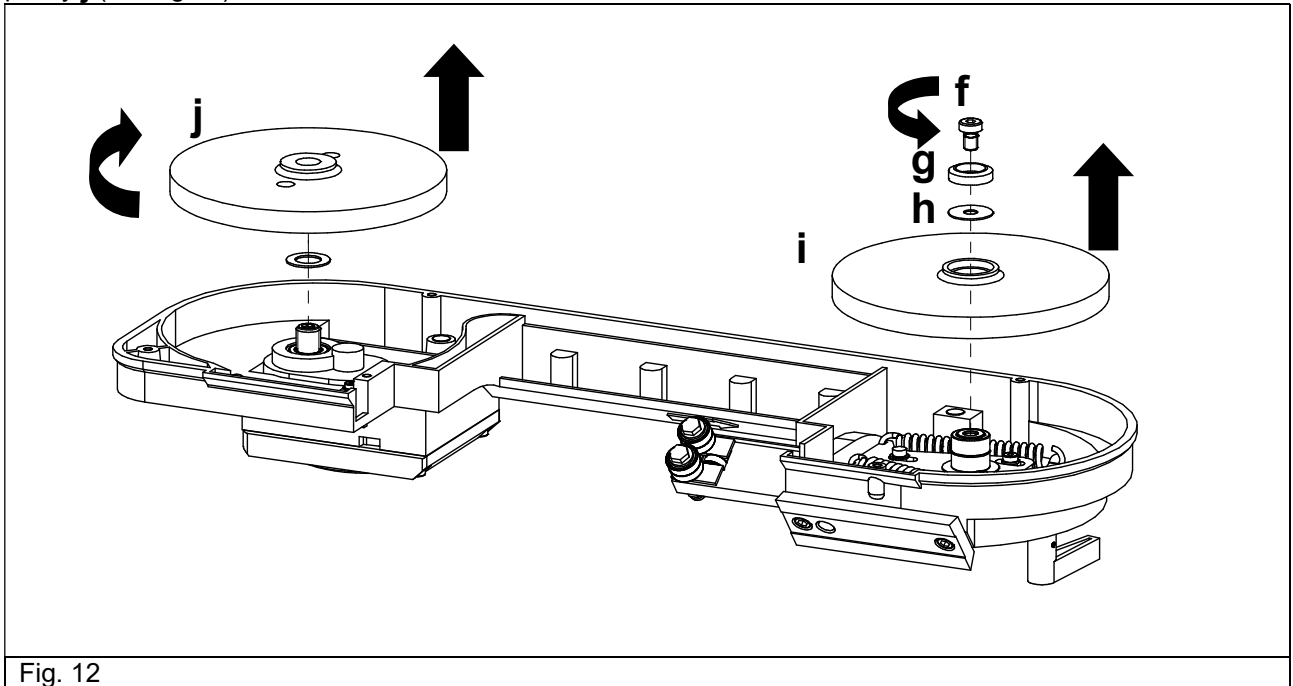


Fig. 12

Disassembly of the gear box

Undo the socket head screws **f** and take off the gear cover **k**. Pull out the inner gear parts **l**. (see fig. 13).

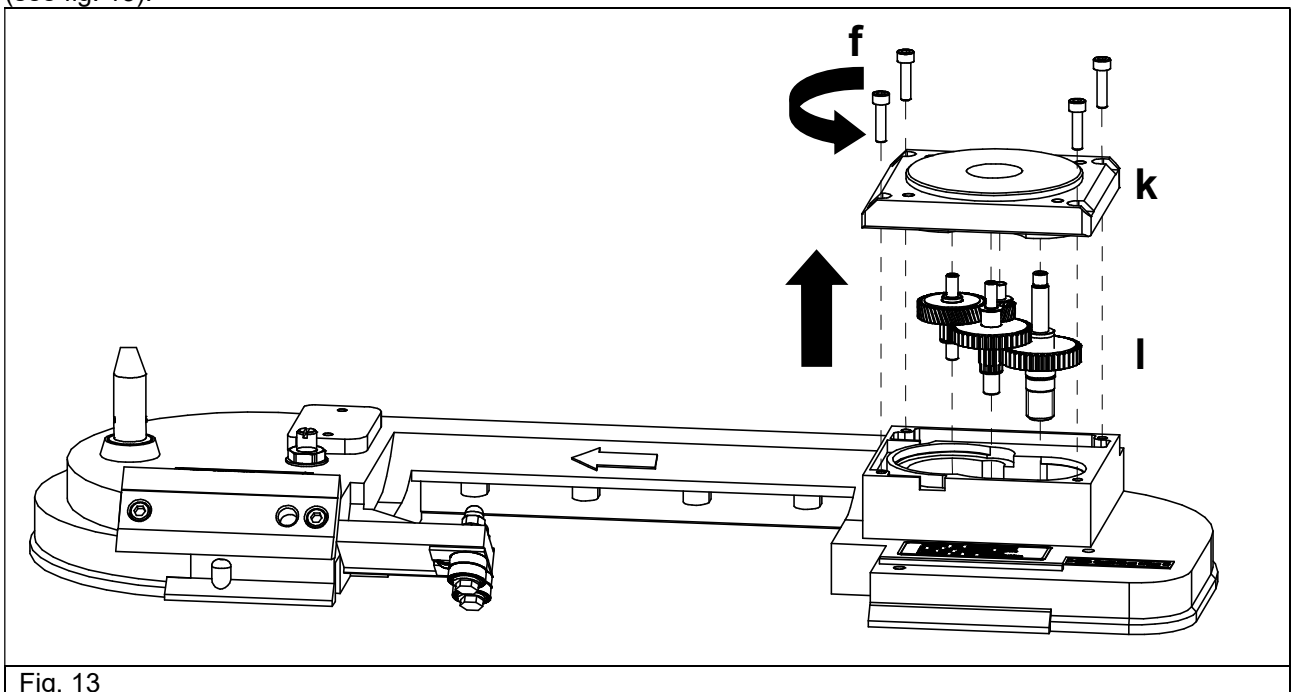


Fig. 13

Re-assembly of the gear

Basically the re-assembly of the gearbox is done in reverse order. Sufficiently fill the gearbox with grease.

Disassembly of the band saw head

Remove hexagonal nut **m**, spring washer **n** and snap ring **o**. Pull out the adjusting screw **p**. Loosen socket head screw **q**. Take out fixing plate **r**, adjusting plate **s** and tension springs **t**. Pull needle sleeves **u** from the shaft **v** and out of the band saw frame **J**. Press out the grooved ball bearing **w**. Remove tension sleeve **x**. Separate tension lever **y** from the eccentric shaft **z**. (see fig. 14).

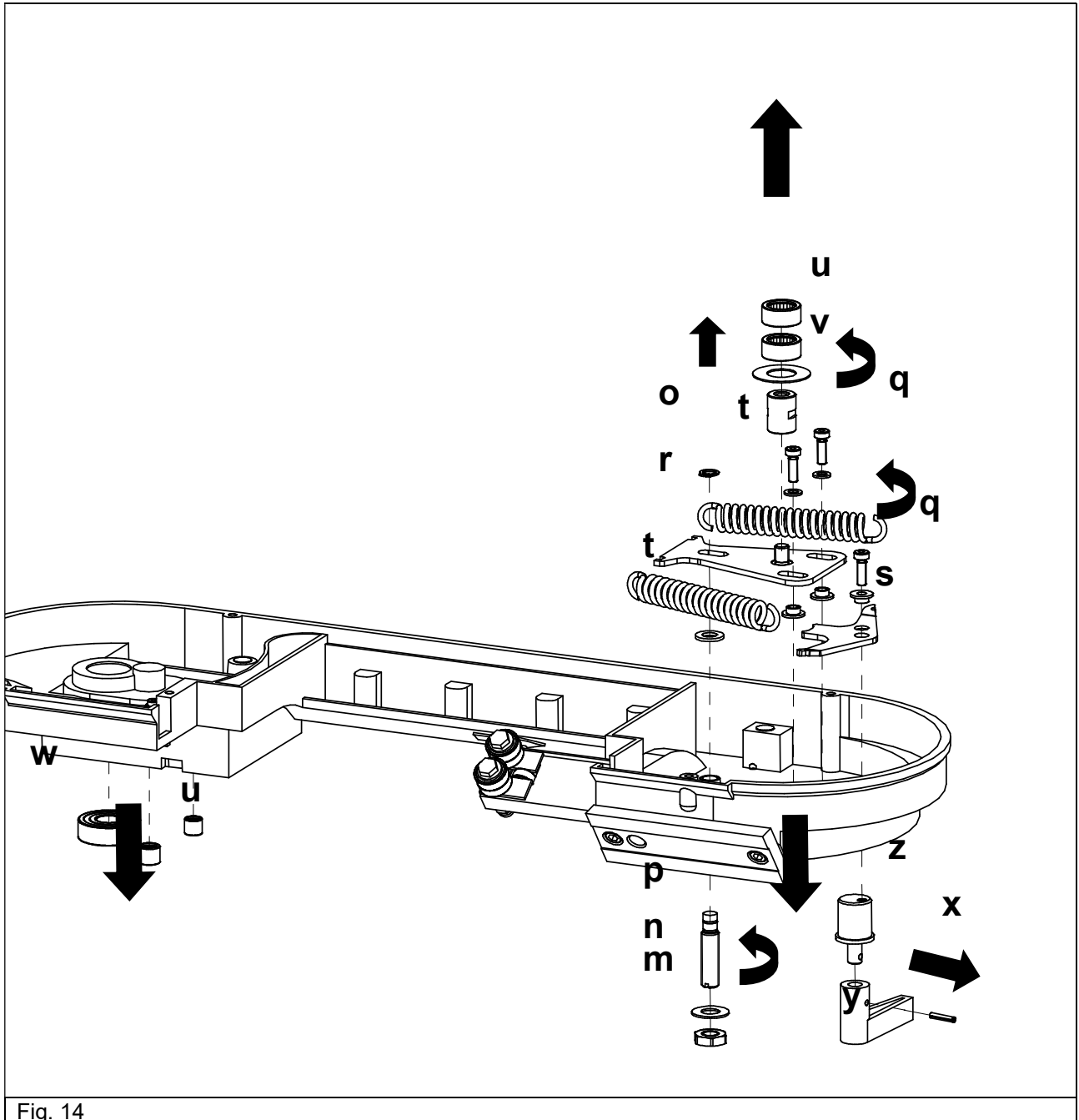


Fig. 14

Re-assembly of the band saw head

The re-assembly of the band saw head is done in reverse order. Check the smooth running of the pulleys by turning them by hand. Then screw-on the pneumatic motor.

Disassembly of the clamp

Loosen tenion lever **Aa** and hexagonal nut **Bb**. Remove swivel arm **Cc**. Remove socket head screws **Dd** and the bench vice **Ee**. Remove the hexagonal nut **Ff**. Pull out the stop **Gg** (see fig.15).

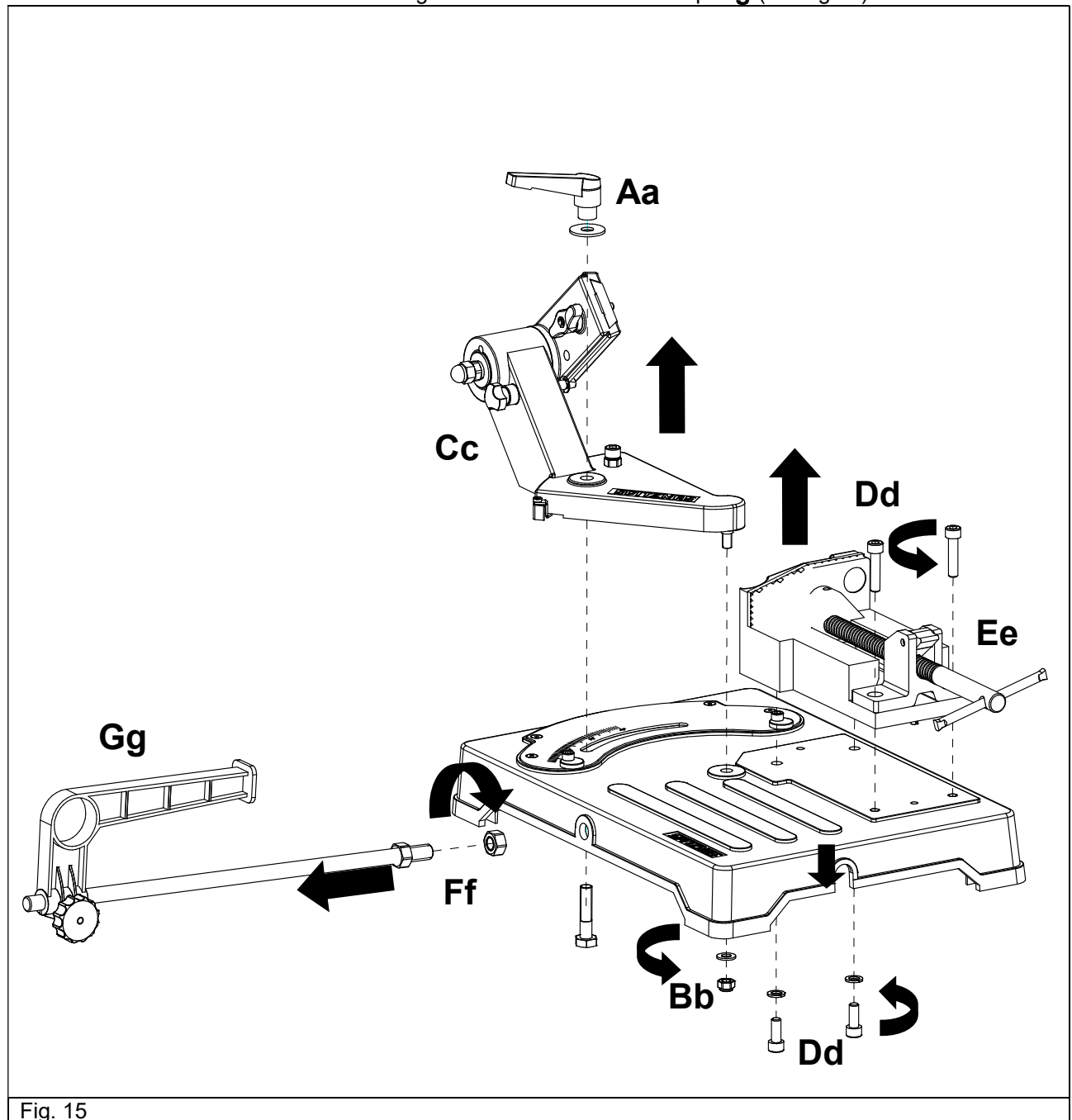


Fig. 15

Re-assembly of the clamp

The re-assembly of the clamp is done in reverse order.

Spare parts

Only genuine Spitznas spare parts may be used. There is no warranty for damages and liability is disclaimed, if non-original spare parts and accessories are used.

Spare Parts List					
Description:			Part and drawing number:		
Pneumatic Band Saw			5 6093 0010		
Item	Qty.	Description	Part and drawing no.		Remarks
	1	Pneumatic band saw 5 6093 0010			see extra list
		consisting of:			
1	1	Motor for band saw	5 6003 0015		
2	1	Gear, assy.	5 6093 4000		
3	1	Band saw head	5 6093 8000		
4	1	Clamp, assy.	5 6093 9500		
5	1	Band saw blade 8tpi	9 2506 0650		
6	1	Type label	9 3101 0610		
7	6	Round head grooved pin	9 1628 0040		
8	4	Socket head screw	9 1110 3380		
9	4	Socket head screw	9 1112 4180		
10	1	Sticker	9 3104 0320		
11	1	Sign	9 3104 0290		
12	1	Warning sign	9 3102 0300		
13	1	Spitznas logo	9 3107 0080		

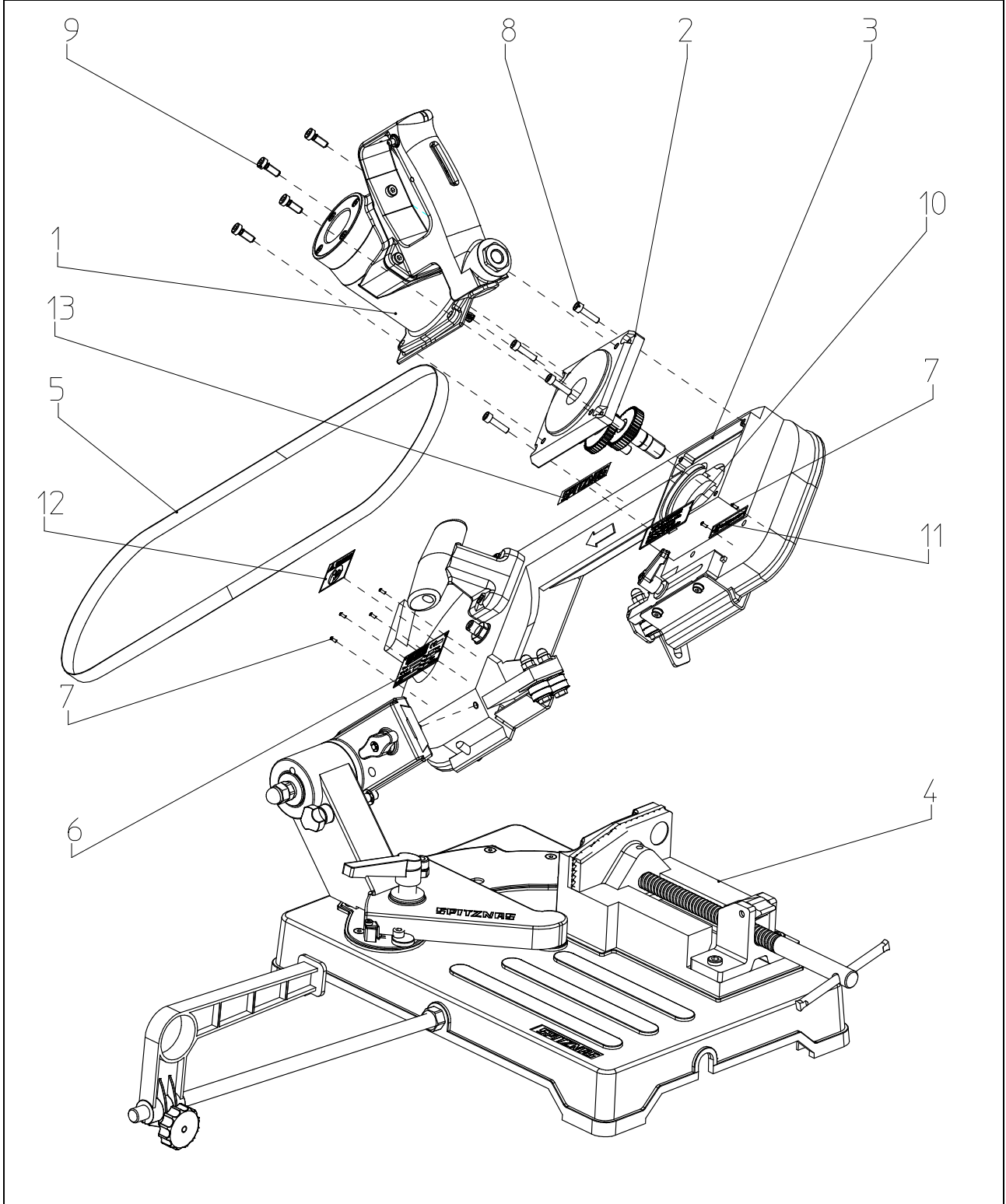
Spare Parts List

Description:

Pneumatic Band Saw

Part and drawing number:

5 6093 0010



Spare Parts List				
Description:			Part and drawing number:	
Motor for Band Saw			5 6003 0015	
Item	Qty.	Description	Part and drawing no.	Remarks
	1	Motor for band saw 5 6003 0015		
		consisting of:		
1	1	Motor for band saw	5 6003 0000	
2	1	Reducing nipple	9 2203 0180	

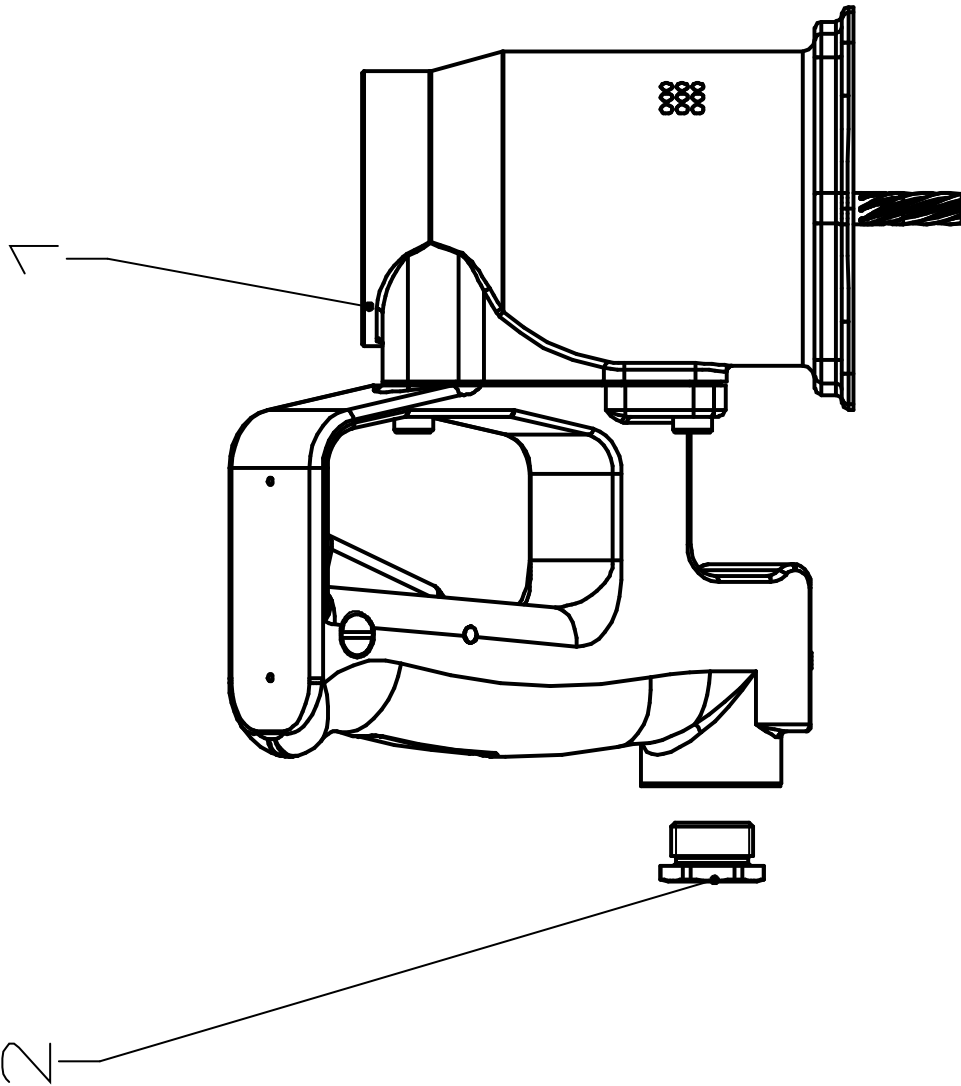
Spare Parts List

Description:

Motor for Band Saw

Part and drawing number:

5 6003 0015



Spare Parts List					
Description:			Part and drawing number:		
Gear, assy.			5 6093 4000		
Item	Qty.	Description	Part and drawing no.		Remarks
	1	Gearbox cover, assy.	5 6093 4910		item 401, 408, 409
401	1	Gearbox cover	5 6093 4010		
402	1	Gear shaft, assy.	5 6093 4040		
403	1	Gear shaft, assy.	5 6093 4050		
404	1	Gear shaft	5 6093 4060		
405	1	Intermediate wheel	5 6093 4070		
406	1	Sliding disc	5 6093 4130		
407	1	Spacer	5 6093 4140		
408	2	Needle sleeve	9 1014 0250	*	
409	1	Bearing needle	9 1019 0480	*	
410	1	Grooved ball bearing	9 1001 0070	*	
412	1	Needle cage	9 1015 0300	*	
413	1	Spring washer	9 3328 0130		
414	4	Adjusting washer	9 3331 2500		
		*Wear parts to be stored in case of continuous use			

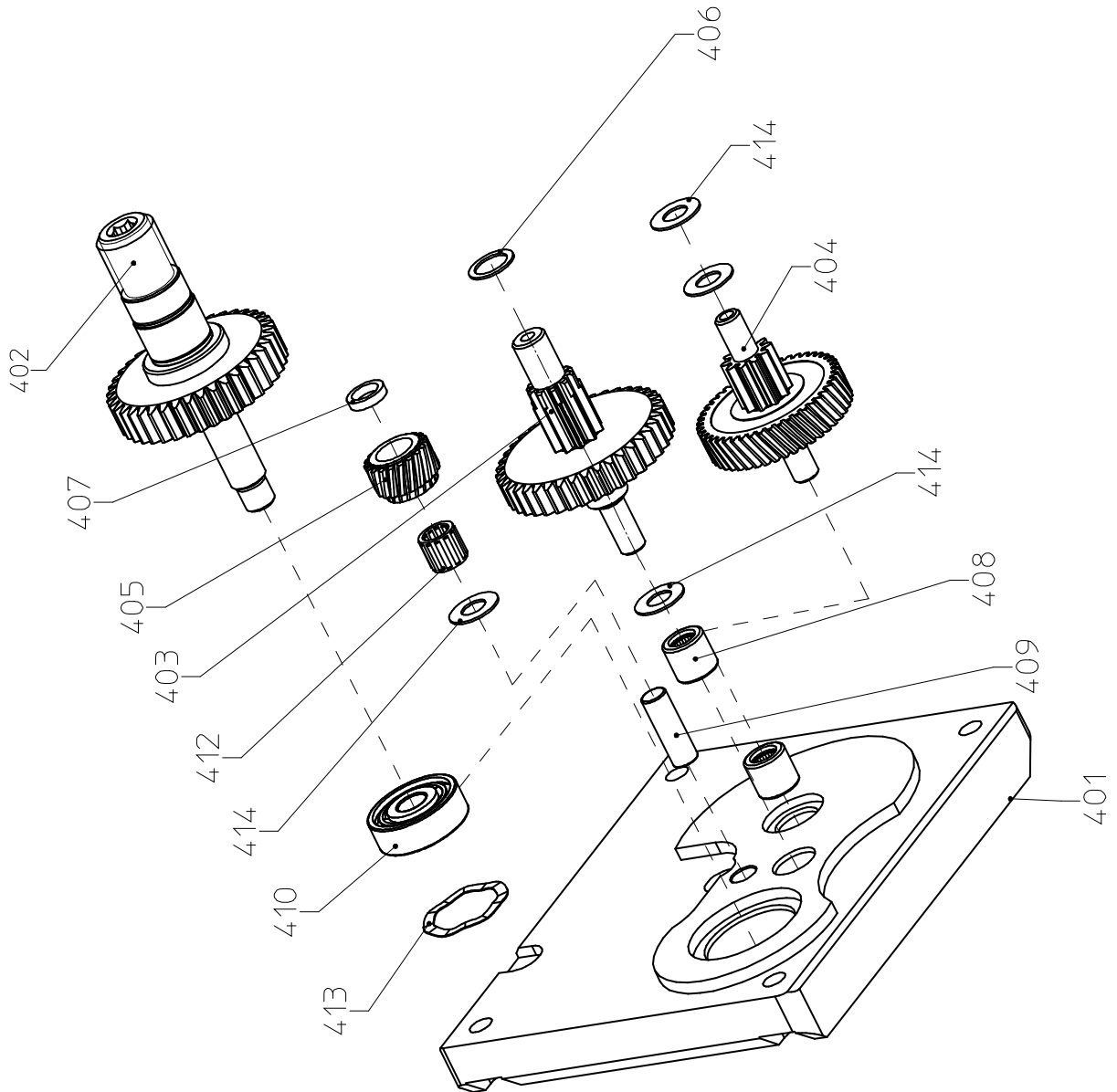
Spare Parts List

Description:

Gear, assy.

Part and drawing number:

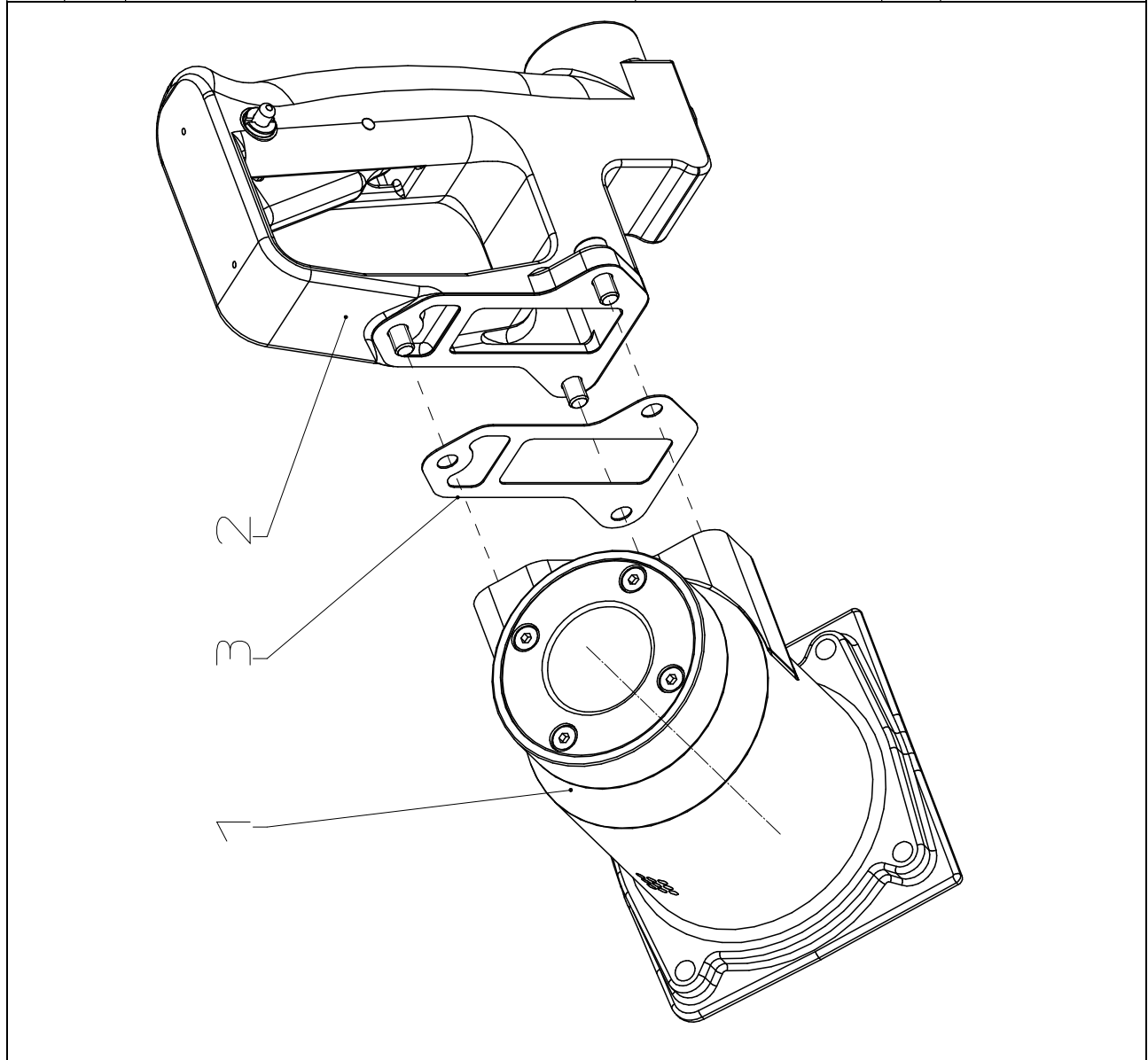
5 6093 4000



Spare Parts List

Description: Motor for Band Saw	Part and drawing number: 5 6003 0000
---	--

Item	Qty.	Description	Part and drawing no.		Remarks
	1	Motor for band saw 5 6003 0000			
		consisting of:			
1	1	Motor, assy.	5 6003 1000		
2	1	Handle, assy.	5 6003 6000		
3	1	Sealing	5 6003 6060		



Spare Parts List					
Description:				Part and drawing number:	
Motor, assy.				5 6003 1000	
Item	Qty.	Description	Part and drawing no.		Remarks
101	1	Motor housing, assy.	5 6003 1910		
	1	End plate, assy.	5 6003 1940		item 102-105
102	1	End plate	5 6003 1100		
103	1	Grooved ball bearing	9 1001 0370	*	
104	1	Snap ring	9 1703 0040		
105	1	Spacer ring	2 2404 1080		
106	1	Cylinder bushing	3 8636 1020		
107	1	Cylinder pin	9 1619 0700		
108	1	Rotor	5 6003 1030		
109	5	Vane	3 8601 1050	*	
	1	End plate, assy.	2 2404 9920		item 110-112
110	1	End plate	2 2404 1110		
111	1	Grooved ball bearing	9 1001 0030	*	
112	1	Spacer ring	1 1101 1090		
113	1	Cover	3 8636 1120		
114	1	Pressure cap	5 6003 1180		
115	1	Cup spring	9 1801 0400		
116	1	Motor housing cover	5 6003 1130		
117	1	O-ring	9 1901 2370	*	
118	4	Socket head screw	9 1112 3030		
119	1	Sound absorber	1 2034 6100		
120	1	Motor cover	5 6003 1150		
121	1	Shaft seal	9 1905 0250	*	
122	1	O-ring	9 1901 2430	*	
123	4	Socket head screw	9 1112 3030		
		*Wear parts to be stored in case of continuous use			

Spare Parts List	
Description:	Part and drawing number:
Motor, assy.	5 6003 1000
<p>The diagram shows an exploded view of a pneumatic motor assembly. On the left, a vertical list of numbers (101-123) is connected by lines to various components of the motor. The components include a top housing (118), a top cover (116), a top flange (117), a top seal (115), a top sleeve (114), a top nut (113), a top washer (111), a top pin (110), a top bracket (112), a top shaft (109), a top nut (108), a top sleeve (107), a top seal (106), a top sleeve (105), a top bracket (102), a top housing (103), a top flange (104), a top housing (101), a top seal (122), a top housing (121), a top housing (120), and a top housing (123).</p>	

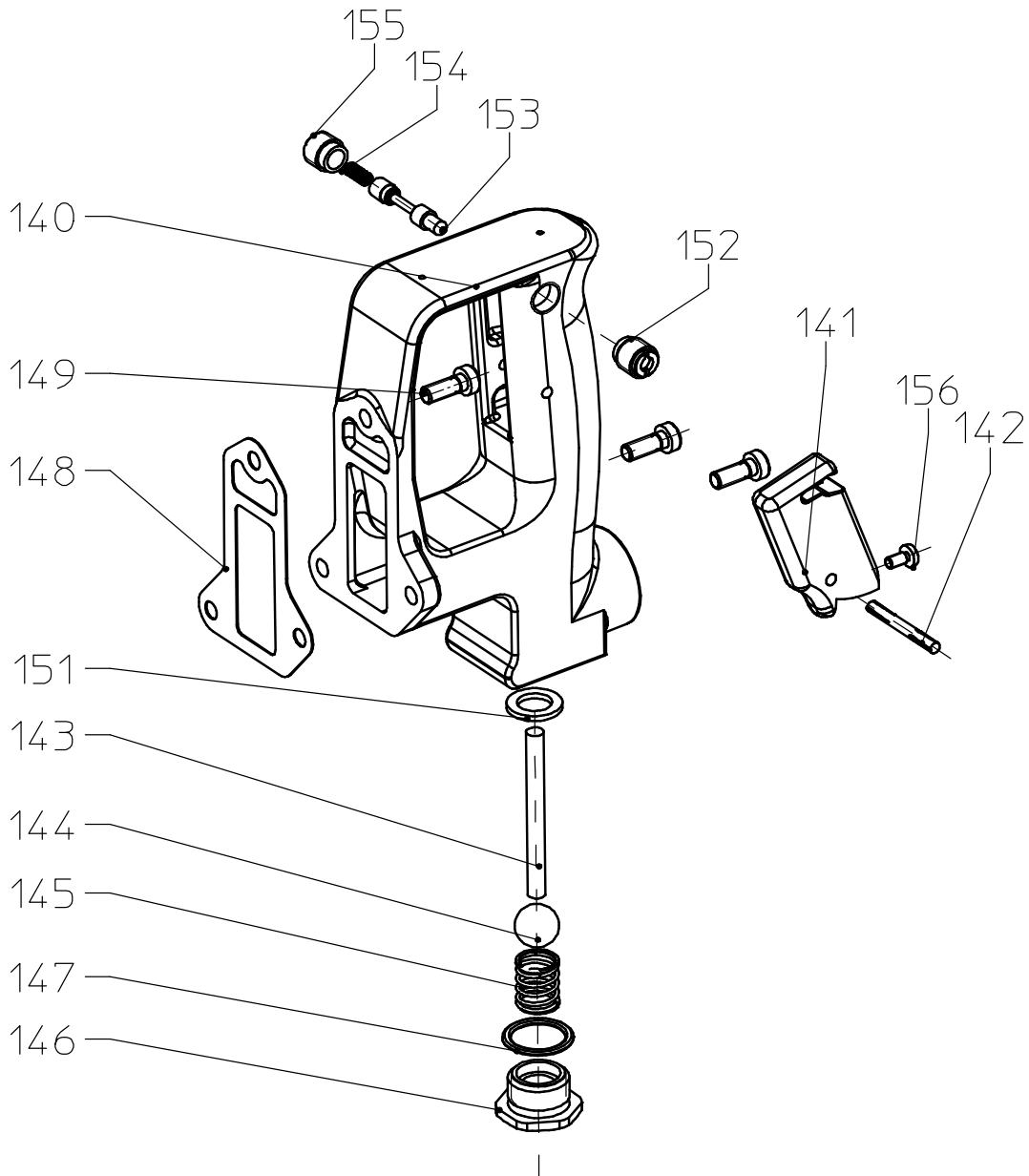
Spare Parts List

Description:

Handle, assy.

Part and drawing number:

5 6003 6000



Spare Parts List					
Description:				Part and drawing number:	
Band Saw Head				5 6093 8000	
Item	Qty.	Description	Part and drawing no.		Remarks
747	1	Grooved ball bearing	9 1004 0160	*	
752	1	Needle sleeve	9 1014 0010		
769	1	Washer	9 3302 0030		
770	4	Disc	9 3304 0120		
771	2	Grooved ball bearing	9 1001 0290	*	
772	2	Needle roller	9 1016 0340		
773	2	Bolt	5 6093 7030		
774	1	Tension lever	5 6093 7300		
775	1	Washer	9 3310 0050		
776	1	Guide rail	5 6093 7040		
777	2	Spring washer	9 3312 0010		
778	2	Socket head screw	9 1112 3110		
779	1	Guard	5 6093 7050		
780	8	Grooved ball bearing	9 1001 0190	*	
781	4	Disc	5 6093 7260		
782	4	Eccentric screw	5 6093 7080		
783	1	Saw housing	5 6093 7010		
784	1	Sealing ring	5 6093 7310		
785	1	Drive roller	5 6093 7070		
787	1	Cover plate	5 6093 7100		
788	5	Socket head screw	9 1112 3190		
789	2	Sheet metal screw	9 1135 9250		
790	1	Handle right-hand half	5 6093 7110		
791	1	Handle left-hand half	5 6093 7120		
792	5	Socket head screw	9 1112 3150		
793	1	Adjusting screw	5 6093 7250		
794	1	Hexagonal nut	9 1201 0060		
795	1	Tension sleeve	9 1630 0020		
796	1	Tension lever	5 6093 7130		
797	1	Eccentric shaft	5 6093 7140		
798	1	Guide holder	5 6093 7160		
799	1	Brush	5 6093 7170		

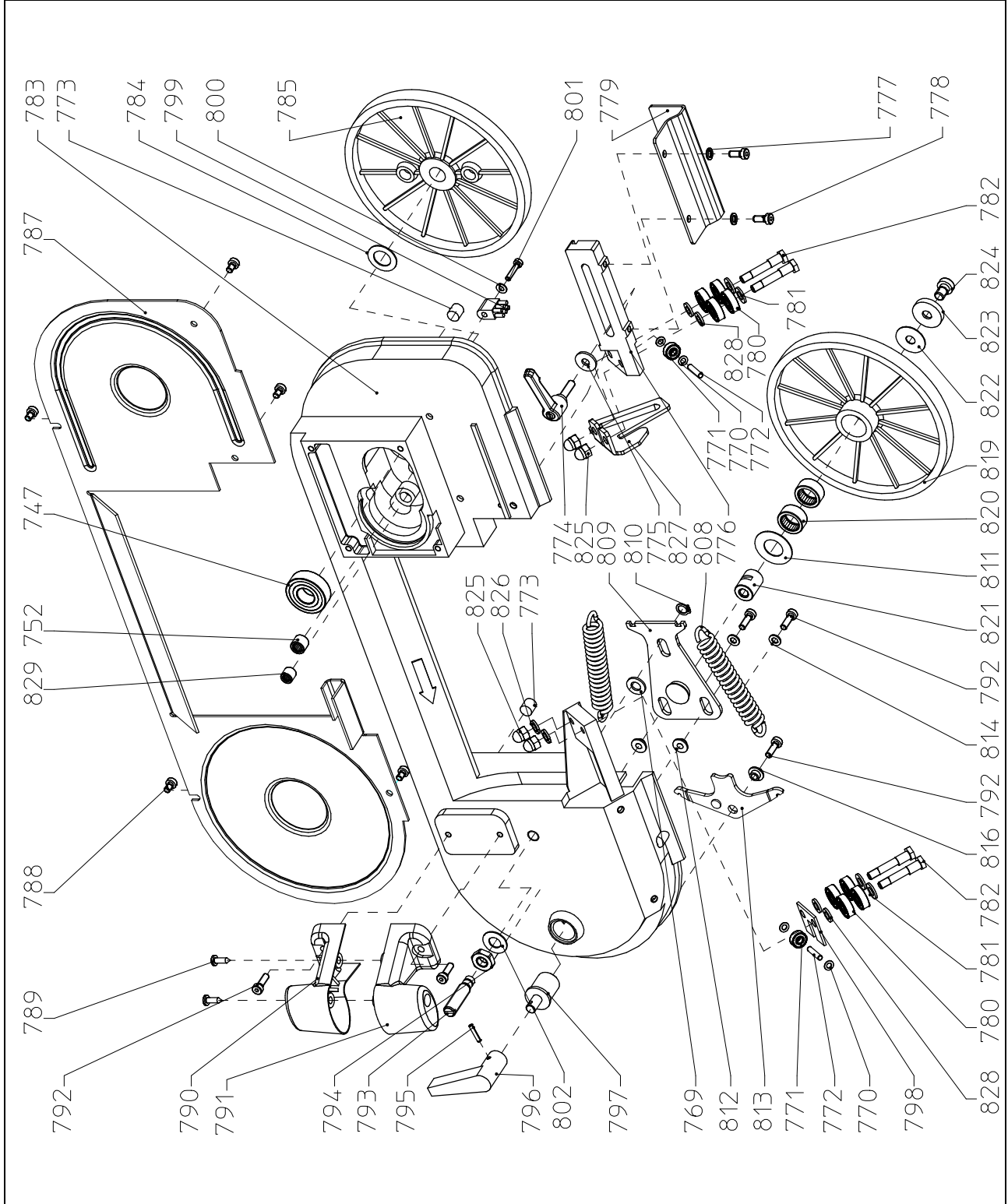
Spare Parts List

Description:

Band Saw Head

Part and drawing number:

5 6093 8000



Spare Parts List					
Description:				Part and drawing number:	
Clamp, assy.				5 6093 9500	
Item	Qty.	Description	Part and drawing no.		Remarks
1	1	Clamp	5 6093 9000		
2	1	Stop	5 6093 9100		
3	1	Bench vice, assy.	5 6093 9200		
4	1	Swivel lever, assy.	5 6093 9300		
5	1	Spitznas logo	9 3107 0070		
6	1	Spitznas logo	9 3107 0080		

