

Hydraulic Driving Machine

Model 3 6242 0010



Illustration can differ from the original.

Schematics

Spare Parts List

Description:

Hydraulic Driving Machine

Part and drawing number:

3 6242 0010

Item	Qty.	Description	Part and drawing no.		Remarks
10	1	Connection plate	5 1220 3070		
11	2	Connection nipple	5 1220 3100		
12	2	O-Ring	9 1901 3410	*	
13	2	O-Ring	9 1901 2140	*	
14	3	Socket head screw	9 1112 5130		
20	1	Gearbox housing I	3 6242 4020		
21	1	Grooved ball bearing	9 1004 0020	*	
22	1	Planetary wheel carrier	3 6339 4030		
23	2	Planetary wheel bolt	3 6339 4050		
24	4	Needle cage	9 1015 0390	*	
25	2	Planetary wheel	3 6339 4040		
26	1	Intermediate housing	3 6242 4510		
27	5	Socket head screw	9 1110 4020		
28	1	Drive shaft	3 6242 1030		
29	1	Hydraulic motor, Assy.	9 5501 0170	*	only sealing set 2 2406 9000
30	1	Adjusting washer	9 3331 0530		
30	1	Adjusting washer	9 3331 0540		
30	1	Adjusting washer	9 3331 0550		
30	2	Adjusting washer	9 3331 0590		
31	1	Coupling	3 6339 4110		
40	1	Gearbox housing II	3 6339 4220		
41	1	Axial grooved ball bearing	9 1021 0020	*	
42	1	Compensating ring	9 3326 1220		
43	1	Grooved ball bearing	9 1003 0020	*	
44	2	Needle sleeve	9 1014 0200	*	
46	1	Worm wheel	3 6339 4130	*	
47	1	Worm	3 6339 4120	*	
48	1	Grooved ball bearing	9 1003 0020	*	
49	1	Locking ring	3 6339 4190		
50	1	Bearing cover	3 6339 4160		

Spare Parts List

Description:

Hydraulic Driving Machine

Part and drawing number:

3 6242 0010

Item	Qty.	Description	Part and drawing no.		Remarks
80	1	Exhaust square	6 1015 7030		
81	2	Locking ring	9 1702 0320		
	1	Twist valve	5 1220 3600		see extra list
	2	Screw-in screwing	9 2124 0240		
	1	Hydraulic hose set	2 1317 9010		

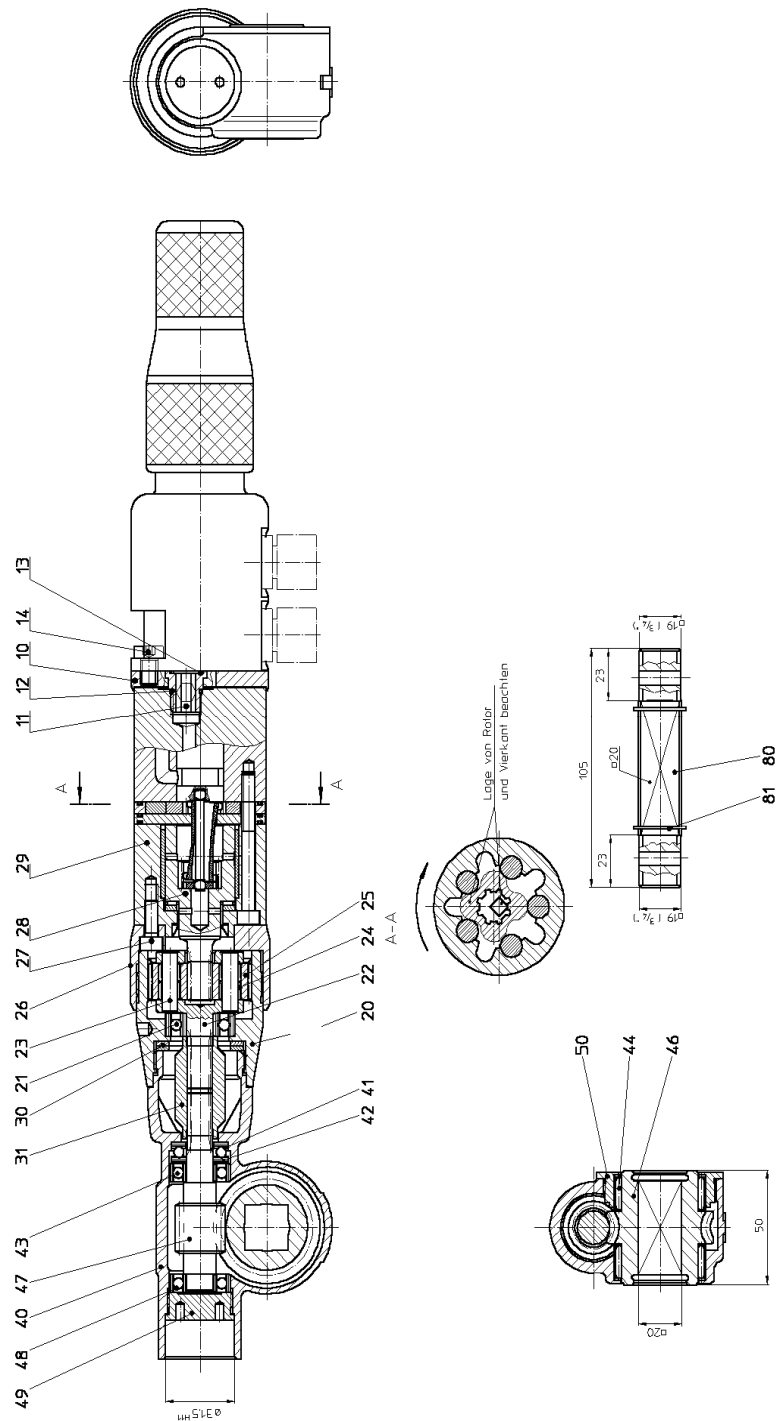
Spare Parts List

Description:

Hydraulic Driving Machine

Part and drawing number:

3 6242 0010



Spare Parts List					
Description:				Part and drawing number:	
Twist Valve				5 1220 3600	
Item	Qty.	Description	Part and drawing no.		Remarks
301	1	Valve housing ass.	5 1220 3910		
302	1	Rotary sleeve	5 1220 3020		
303	1	Pressure pin	5 1220 3060		
304	1	Screw	9 1166 0170		
305	1	Snap ring	9 1702 0020		
306	1	Gland d=4,0mm 15l/min.	5 1220 3050		
307	1	Snap ring	9 1703 0260		
308	1	Fillister head screw	9 1110 2090		
309	1	Washer	9 3302 0150		
310	1	Control piston	2 1317 3320		
311	1	Spring seat	2 1317 3070		
312	1	Pin	2 1317 3110		
313	1	Snap ring	9 1706 0140		
314	1	Bushing	2 1317 3090		
315	1	Guide	2 1317 3100		
317	1	Pressure spring	9 1803 1700		
318	1	Pressure spring	9 1706 0180		
319	1	Snap ring	9 1901 3290		
320	1	O-Ring	9 1901 9800	*	
321	1	O-Ring	9 1901 2550	*	
323	1	O-Ring	9 1901 6020	*	
326	1	O-Ring	9 1901 2080	*	
327	1	Pressure spring	9 1803 4070		
331	2	Locking screw	9 1174 0010		
333	2	Adjusting washer	9 3331 0130		
333	2	Adjusting washer	9 3331 2010		
337	1	Adjusting washer	9 3331 0170		
390	1	Safety valve, assy.	5 1220 3200		see extra list

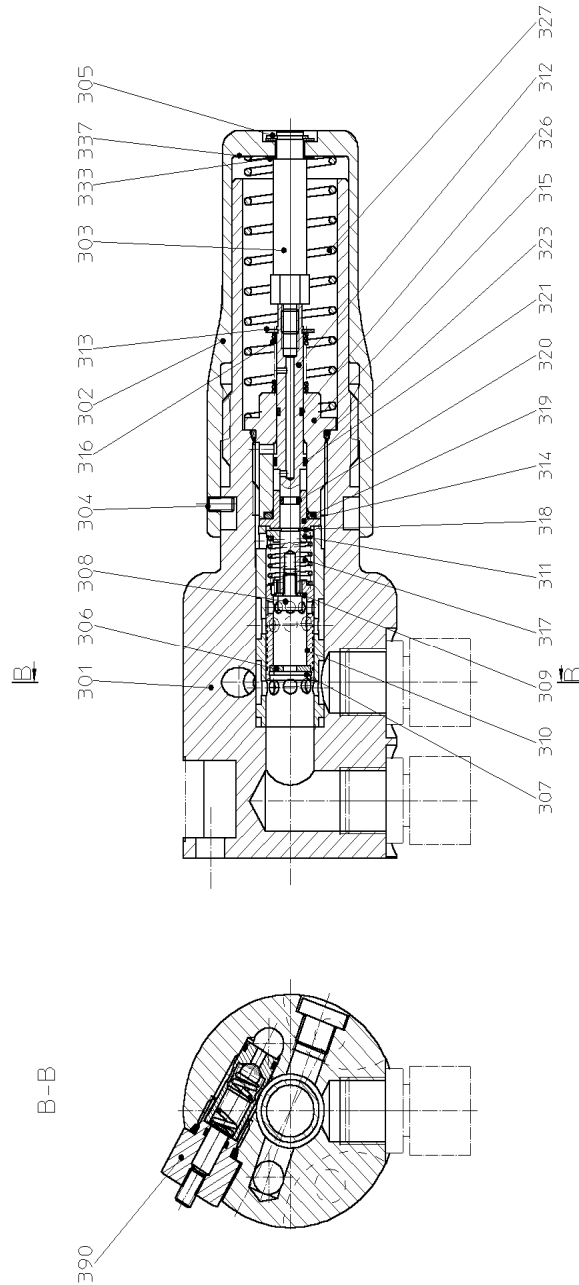
Spare Parts List

Description:

Twist valve

Part and drawing number:

5 1220 3600



Spare Parts List

Description:

Safety valve, assy.

Part and drawing number:

5 1220 3200

Item	Qty.	Description	Part and drawing no.		Remarks
391	1	Locking screw	5 1220 3210		
392	1	Sleeve	5 1220 3220		
393	1	Thread pin	9 1148 3030		
394	1	Cylinder pin	9 1631 0310		
395	1	Pressure spring	9 1803 3480		
396	1	Steel ball	9 1017 0050		
397	1	O-Ring	9 1901 2190	*	Only as a complete safety valve 5 1220 3200
398	1	O-Ring	9 1921 2460	*	
399	1	O-Ring	9 1901 2260	*	

Spare Parts List

Description:

Safety valve, assy.

Part and drawing number:

5 1220 3200

