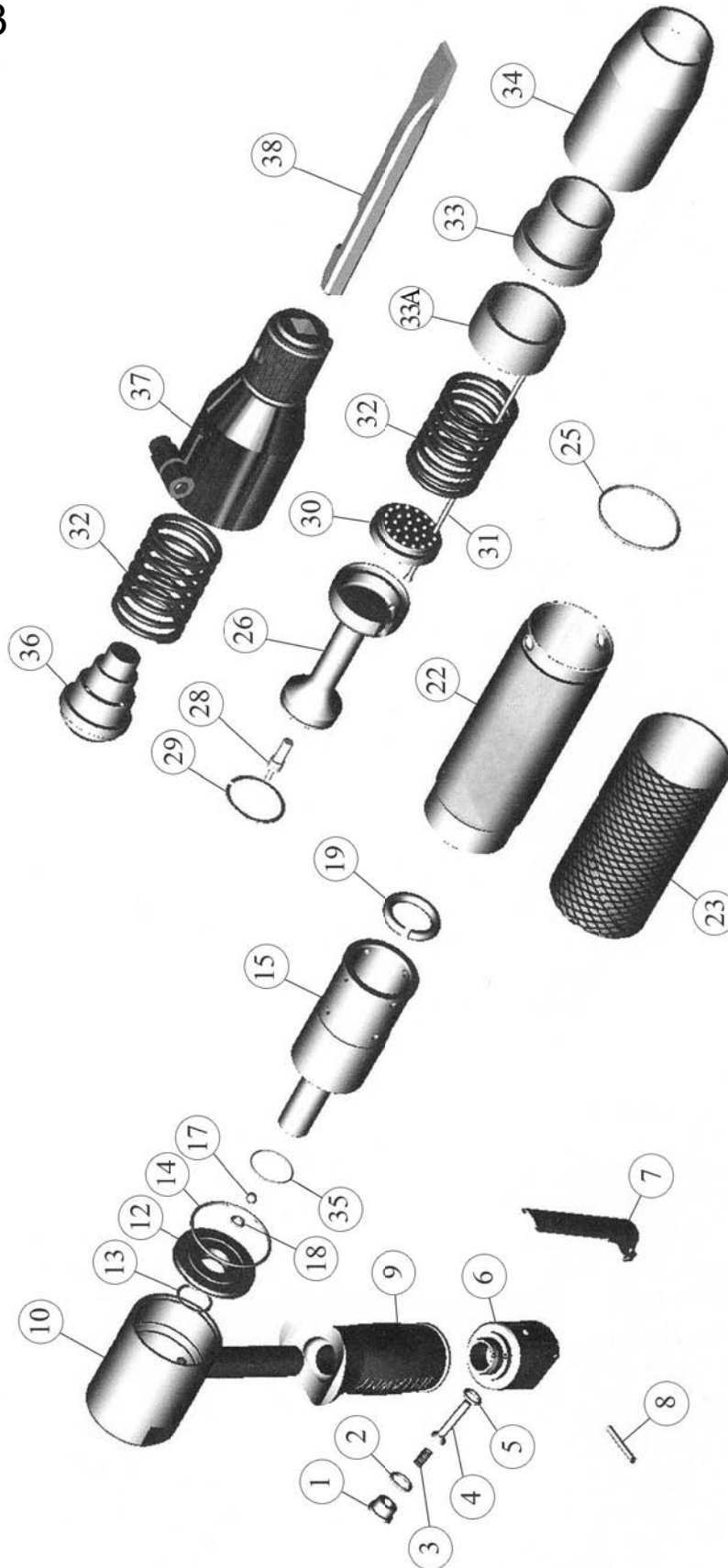


EXPLODED VIEW

VL203



EXPLODED VIEW

PARTS LIST VL203

ITEM No.	PART No.	DESCRIPTION	ITEM No.	PART No.	DESCRIPTION
Common Parts			VL203 Components		
1	615.3021	Valve Cap	10	425.2003	VL203 Cover Assembly (Pistol Grip)
2	809.0139	Valve Cap O'Ring			
3	712.3022	Valve Spring			
4	618.3022	Valve Stem	12	652.2003	Guide Plate
5	809.0089	Valve Seat O'Ring	13	829.2003	Guide Plate Seal
6	616.3021	Valve Body	14	809.0299	Guide Plate O'Ring
	423.3021	Valve Body Assembly BSP Thread (incl items 1-8)	15	428.2003	Cylinder
	423.3521	Valve Body Assembly NPT Thread (incl items 1-8)	19	809.2004	Piston Cushion
			22	622.2031	Intermediate Tube
7	716.3000	Throttle Lever	23	721.2003	Intermediate Tube Outer Sleeve
	716.1000	Safety Throttle Lever	25	809.0299	Front Tube Locking O'Ring
8	813.0108	Roll Pin	26	612.2003	Piston
9	717.3050	Rubber Handle Grip	29	829.2002	Piston Ring
17	816.3003	Plastic Ball 6mm diameter	30	601.2030	3mm Needle Holder (fitted as standard)
18	809.0080	Ball Retaining O'Ring		601.2020	2mm Needle Holder
			31	413.2119	6 x Needle 3mm Chisel set (fitted as standard)
28	636.3003	Valve Pin		412.1151	6 x Needle 2mm Flat set
38	704.3101	Chisel 1/2" Sq Shank 7" x 3/4" Blade		413.1119	6 x Needle 3mm Flat set
	704.3103	Chisel 1/2" Sq Shank 7" x 2 1/2" Blade		413.3119	6 x Needle 3mm Pointed set
	704.3205	Chisel 1/2" Sq Shank 7" x 1 3/8" Blade		403.1309	Needle set (1 x set Beryllium Copper)
	704.3110	Chisel 1/2" Sq Shank Spark Resistant 2" Blade	32	712.2003	Front Spring
	705.1102	Chisel 5/8" Hex Shank 8" x 4" Blade	33	620.2003	Front Tube Insert
	705.1106	Chisel 5/8" Hex Shank 9" x 2" Blade	33A	620.2003A	Front Tube Spacer
	705.1112	Chisel 5/8" Hex Shank Spark Resistant 4" Blade	34	622.2030	Front Tube
	708.1100	Comb Holder 5/8" Hex Shank (for 1 1/2" Comb)	35	809.3005	Cylinder Stem Reaction Ring
	431.3504	Scraper 5/8" Hex Shank c/w 4" Blade	36	610.2003	Anvil
			37	419.2003	Chisel Holder
	819.2375	Connector 1/4" BSPT-3/8" Stem		418.2003	Vacuum shroud assembly (with flat cuff)
				731.2103	Flat Cuff
				446.2003	Service Kit, (2, 5,13,14,17,18,19,28,29,30,31 & 32)